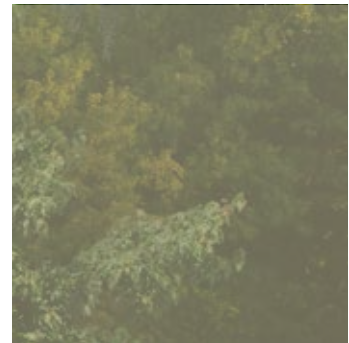




7712MG (p. 8)



HILLCREST SERIES

MODULAR

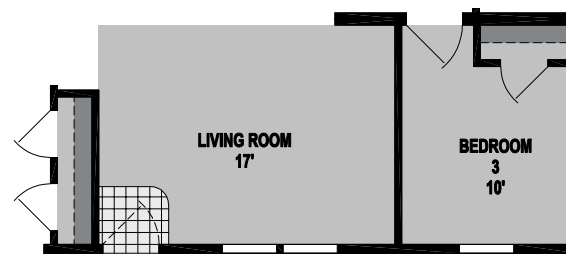
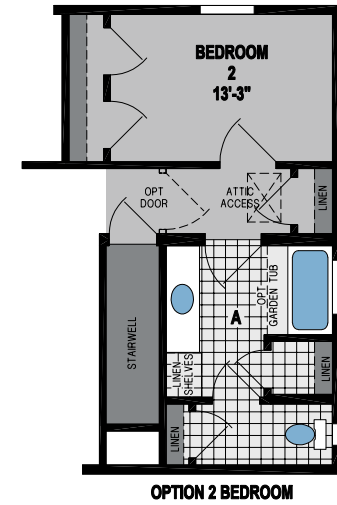
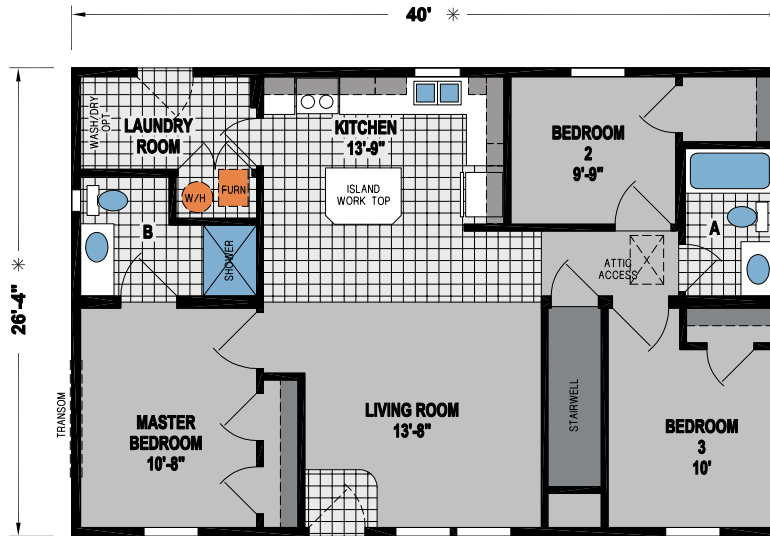
HILLCREST SERIES MODULAR

The Hillcrest Series has been designed to reflect the needs of families through high-end craftsmanship and quality – with affordable amenities and distinctive design details. Manufactured in Sugarcreek, Ohio and backed by over 65 years of manufacturing experience, a 12-month warranty and stellar customer service – take a look for yourself to see why the Hillcrest Series by Skyline Homes is the right decision for you and your family.



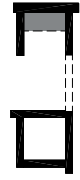


HILLCREST
7724MA
3 BED-2 BATH
1053 SQ.FT.





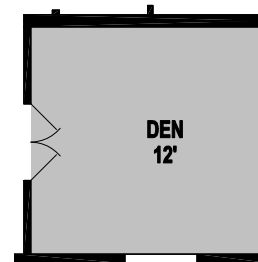
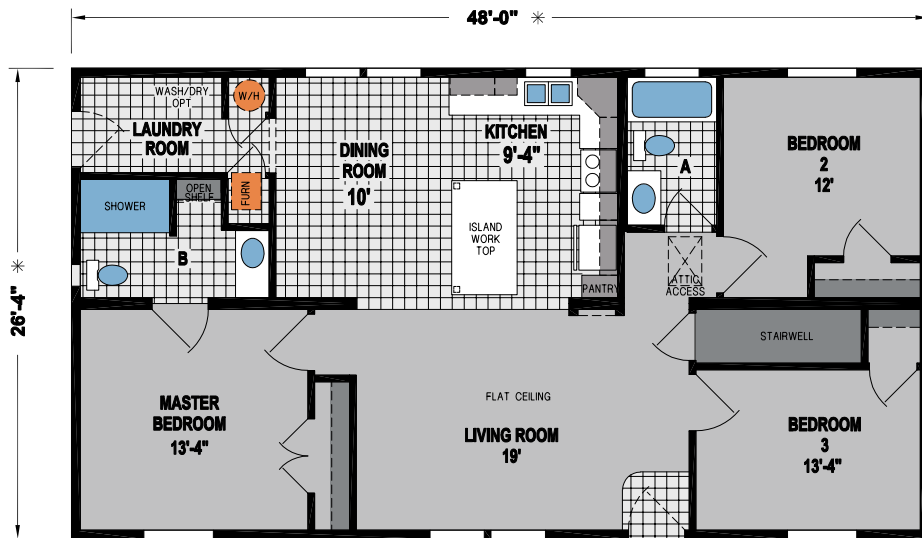
OPTION LAUNDRY ROOM



OPTION LAUNDRY ROOM

W/WATER HEATER
& FURNACE IN
BASEMENT

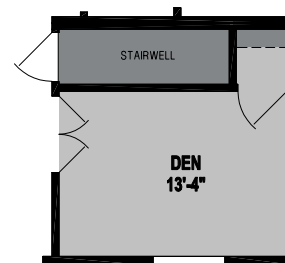
OPTION SLIDING GLASS DOOR



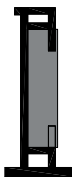
OPTION STAIRWELL DELETE W/DEN



OPTION STAIRWELL DELETE



OPTION DEN



**OPTION ENTERTAIN CENTER
W/OPT FIREPLACE**



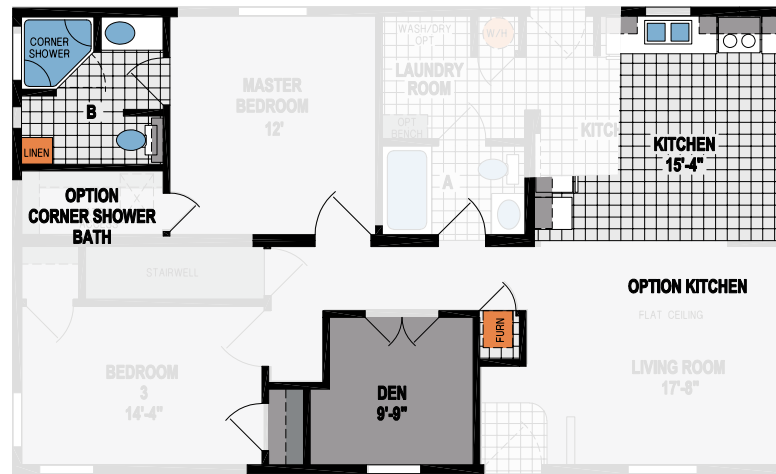
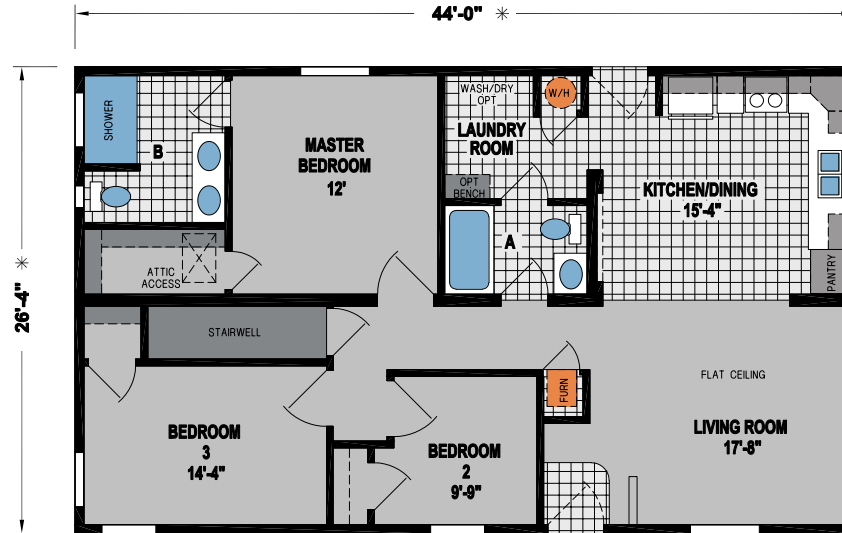
ALTERNATE DOOR LOCATION

**HILLCREST
7707MG**

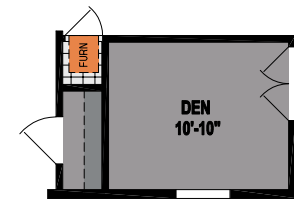
**3 BED-2 BATH
1264 SQ.FT.**

**HILLCREST
7700MA**

**3 BED-2 BATH
1159 SQ.FT.**



OPTION DEN

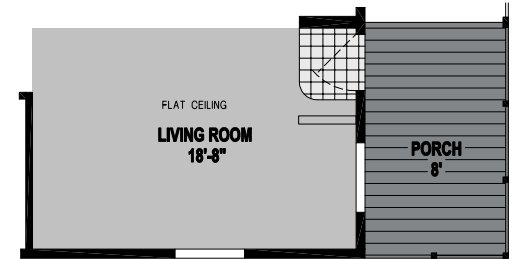


**OPTION STAIRWELL DELETE
AND DEN**

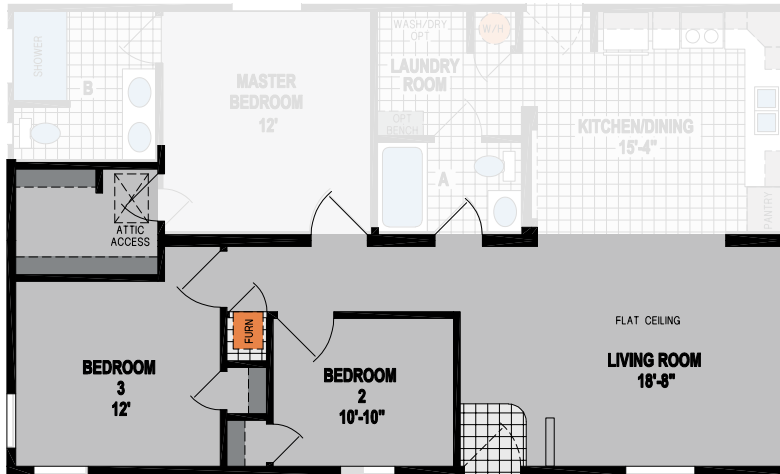


OPTION 2BEDROOM CONFIGURATION

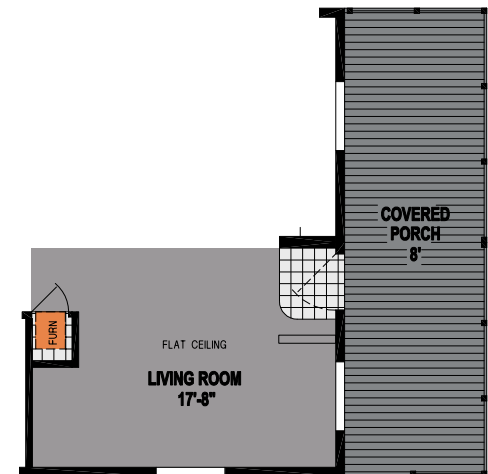
N/A #OPTION STAIRWELL



OPTION STAIRWELL DELETE AND PORCH

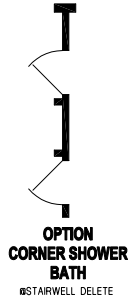


OPTION STAIRWELL DELETE



OPTION PORCH/ALTERNATE ENTRY

52" BOX & FRAME REQUIRED

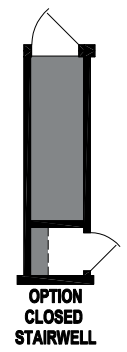
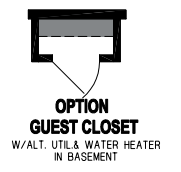
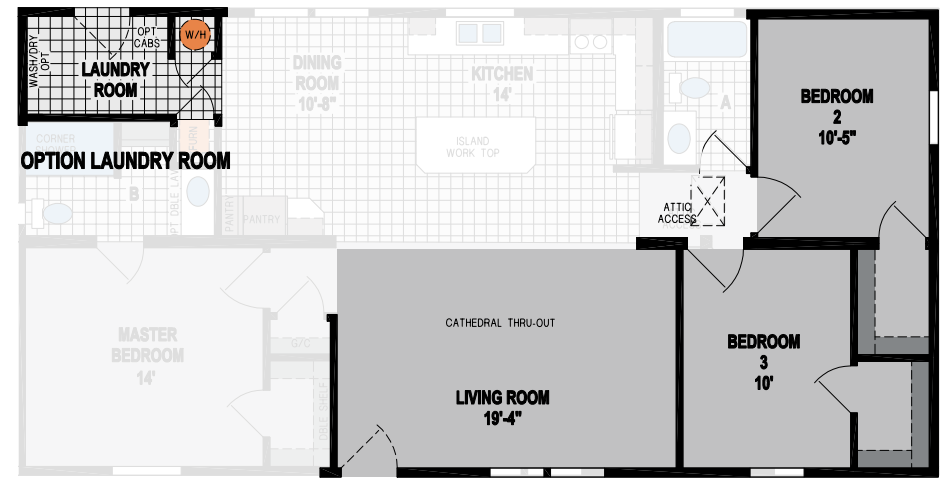
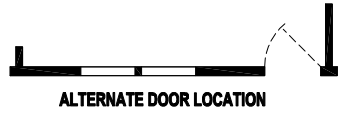
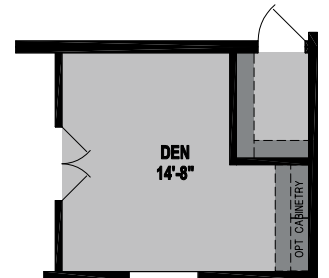
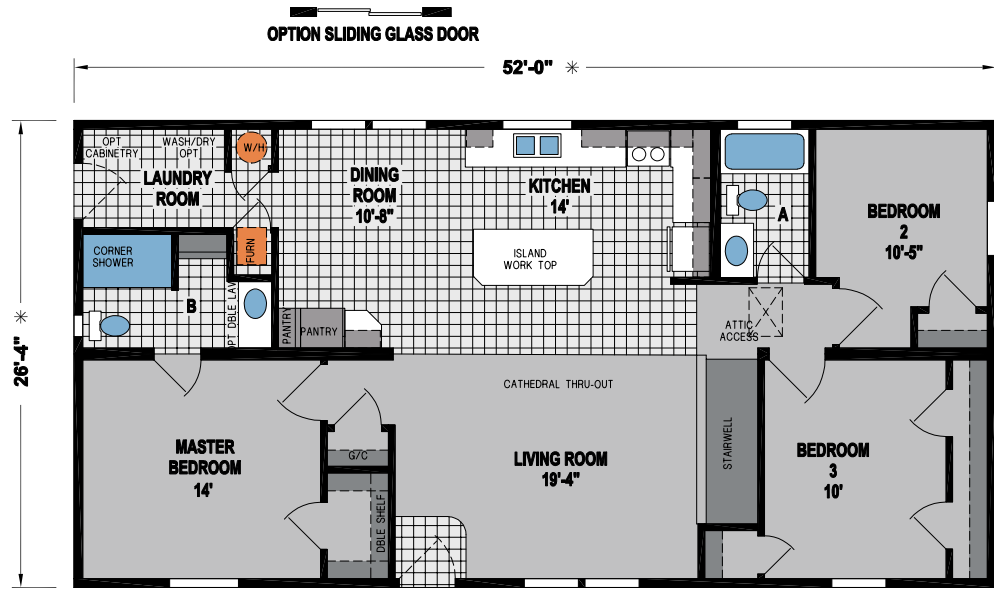


OPTION CORNER SHOWER BATH

#STAIRWELL DELETE

HILLCREST
7712MG

3 BED-2 BATH
1369 SQ.FT.





OPTION SLIDING GLASS DOOR



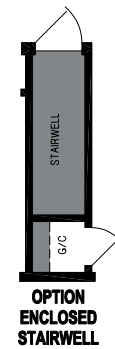
HILLCREST
7787MG

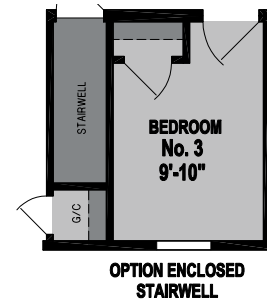
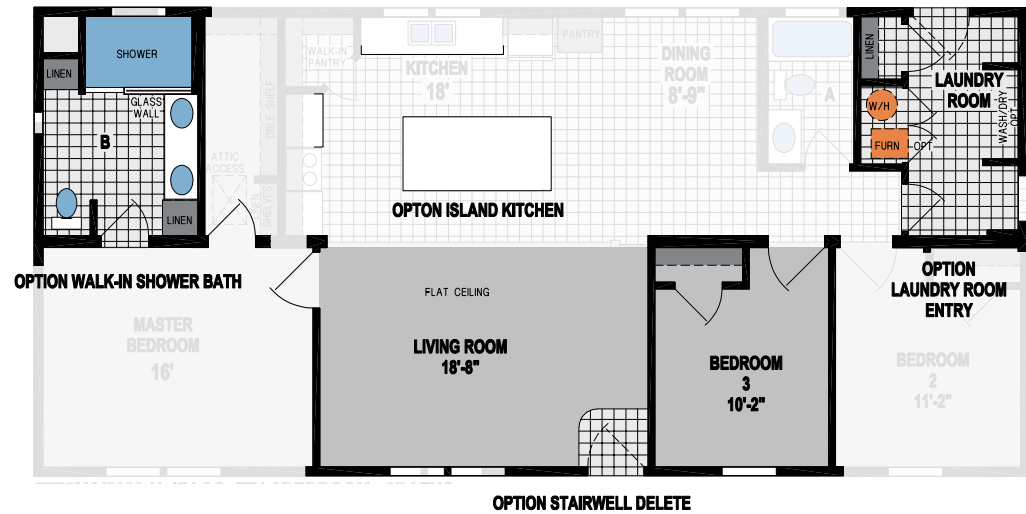
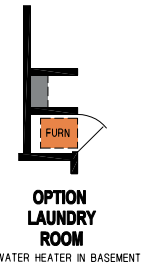
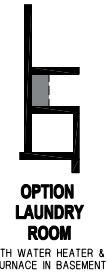
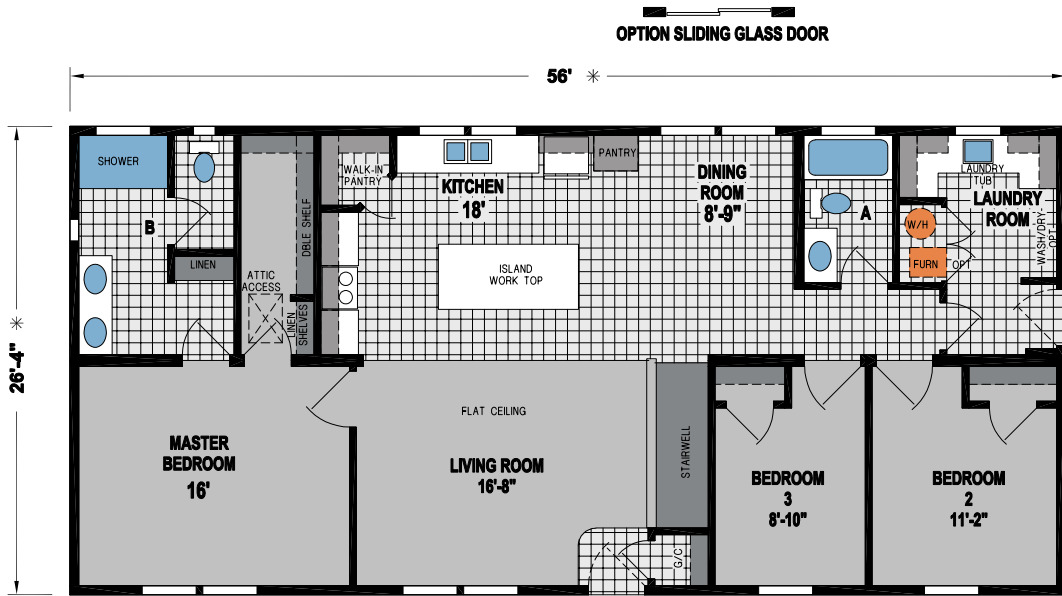
3 BED-2 BATH
1369 SQ.FT.

OPTION WALK-IN SHOWER BATH



OPTION STAIRWELL DELETE



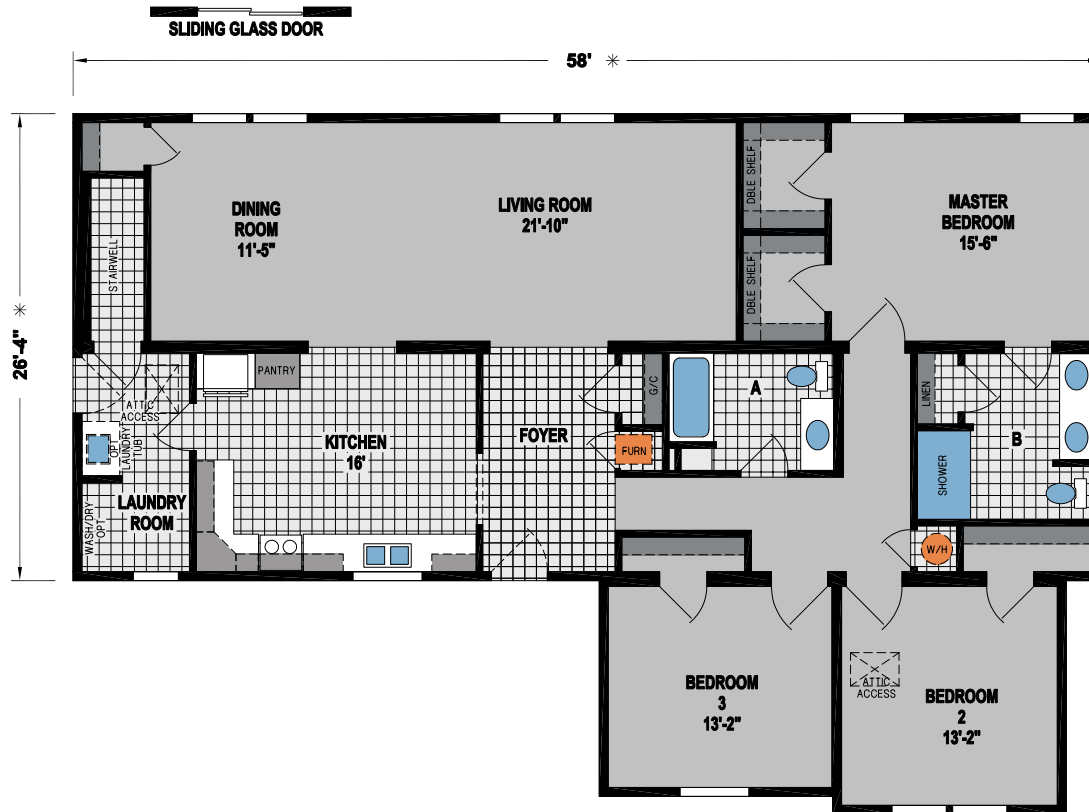


HILLCREST
7775 MA

3 BED-2 BATH
1474 SQ.FT.

HILLCREST
7753 MA

3 BED-2 BATH
1860 SQ.FT.



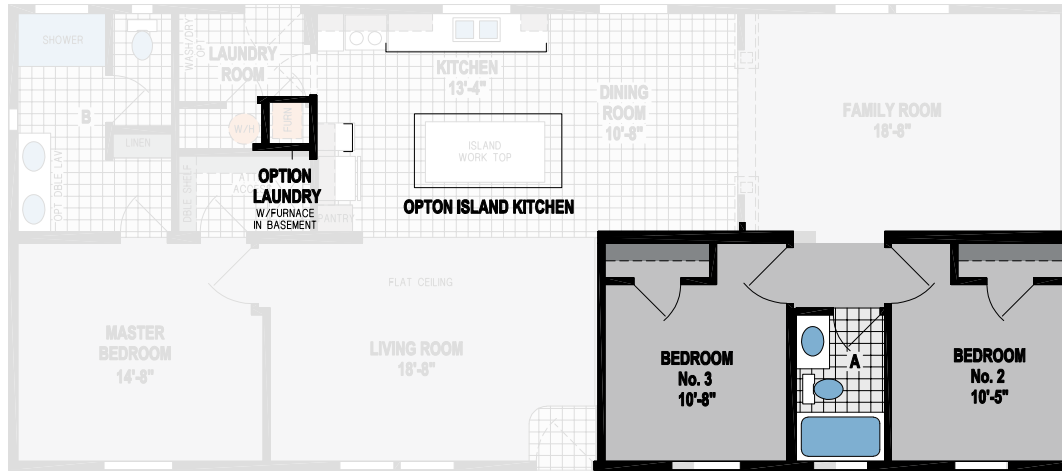
**HILLCREST
7708MH**

**3 BED-2 BATH
1580 SQ.FT.**

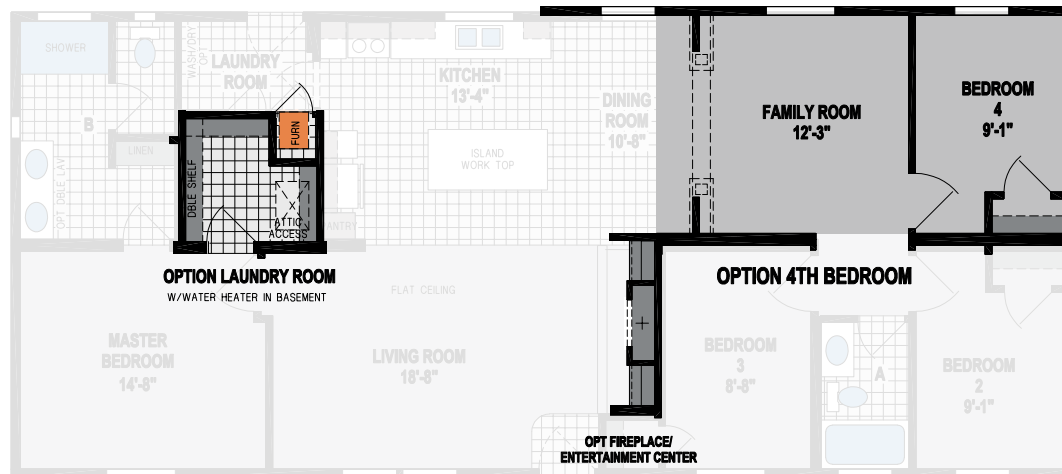
OPTION SLIDING GLASS DOOR

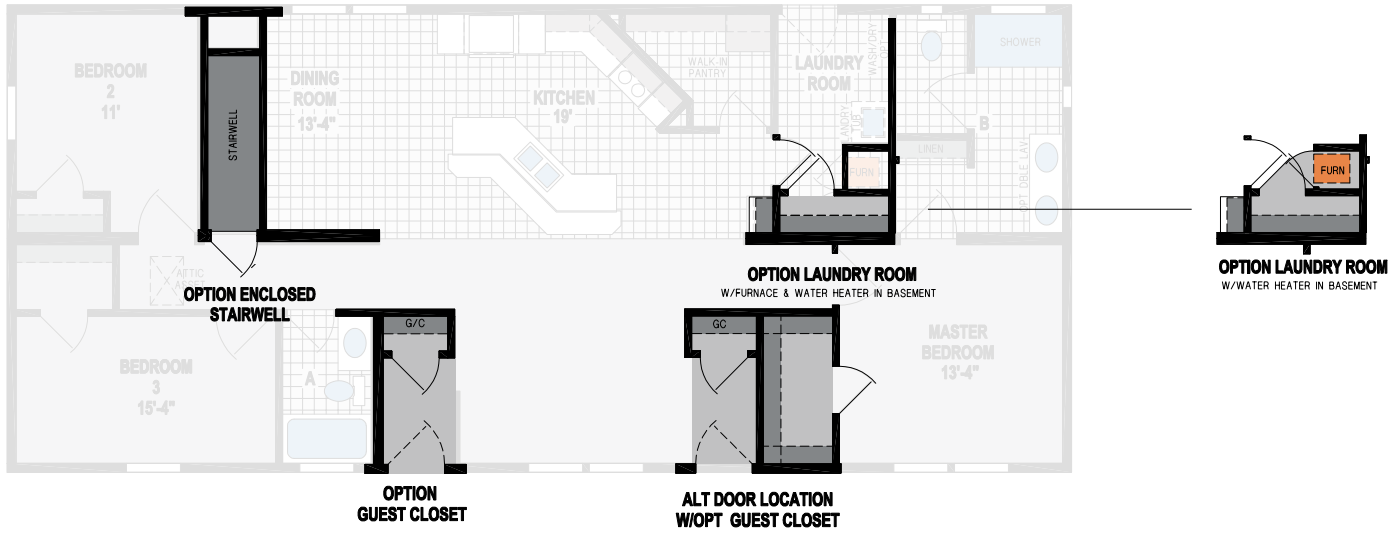


OPTION SLIDING GLASS DOOR

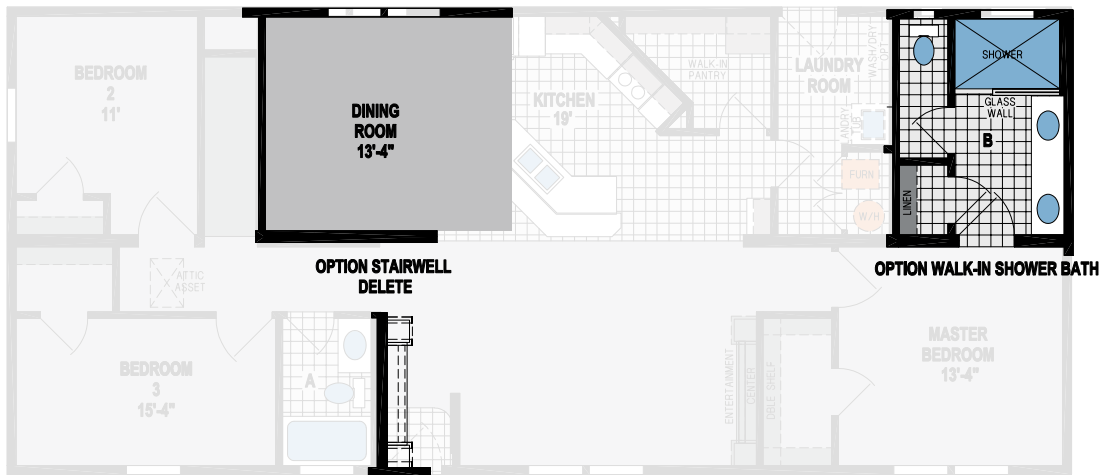


OPTION STAIRWELL DELETE





OPTION SLIDING GLASS DOOR

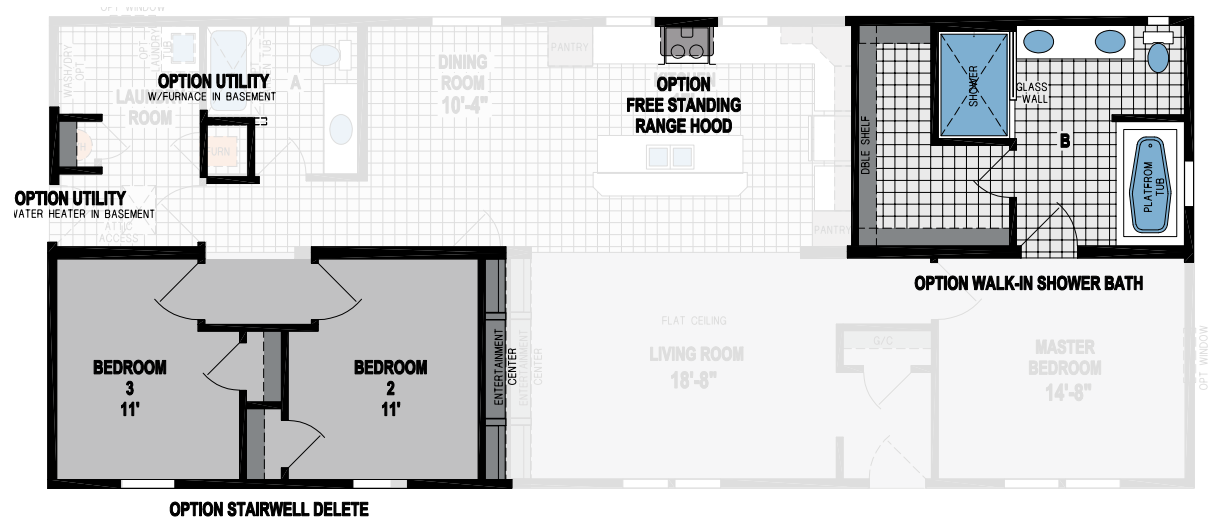


OPTION SLIDING GLASS DOOR



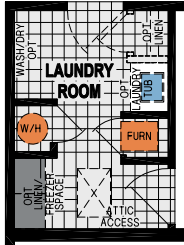
HILLCREST
7738 MA

3 BED-2 BATH
1685 SQ.FT.

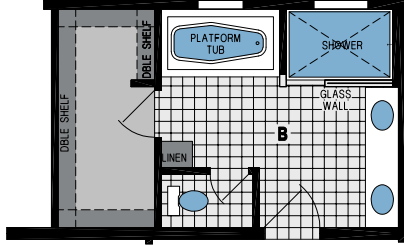




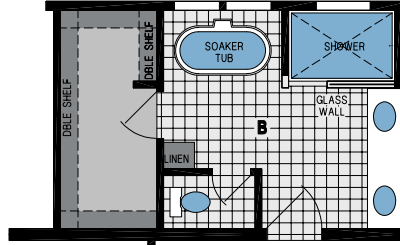
OPTION LAUNDRY TUB



OPTION LAUNDRY ROOM



OPTION DELUXE MASTER BATH

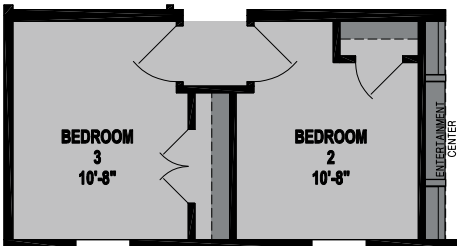
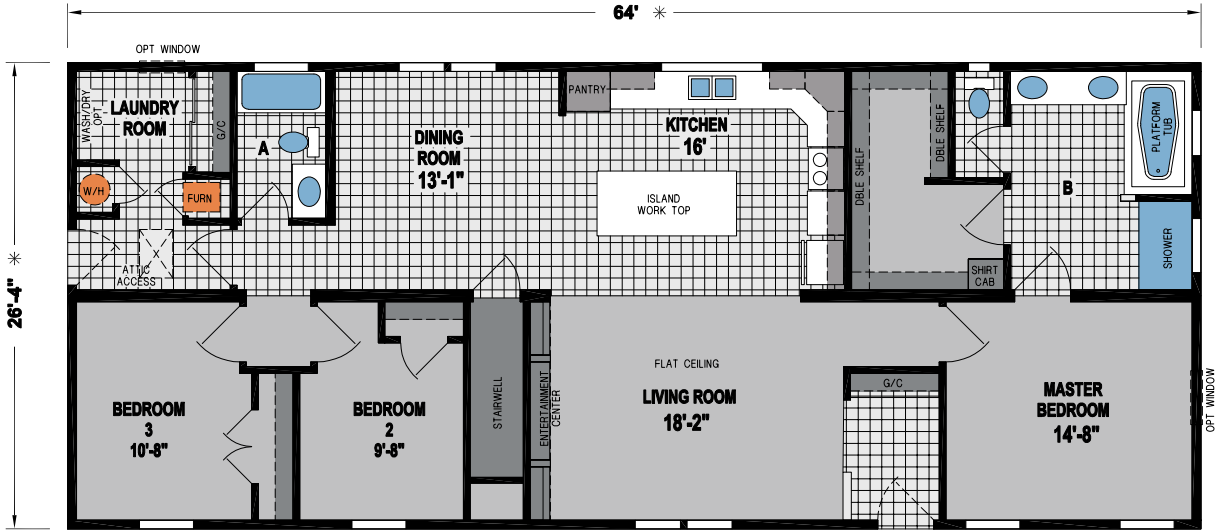


OPTION SOAKER TUB DELUXE MASTER BATH

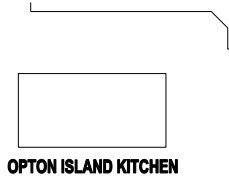


OPTION LAUNDRY ROOM
W/WATER HEATER
& FURNACE
IN BASEMENT

OPTION SLIDING GLASS DOOR



OPTION STAIRWELL DELETE

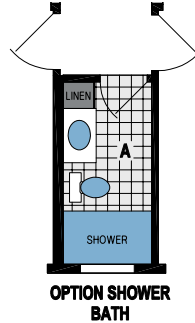
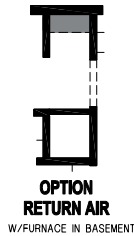
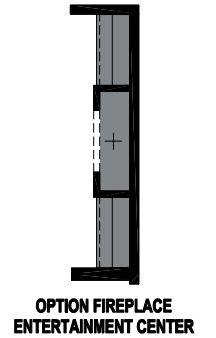
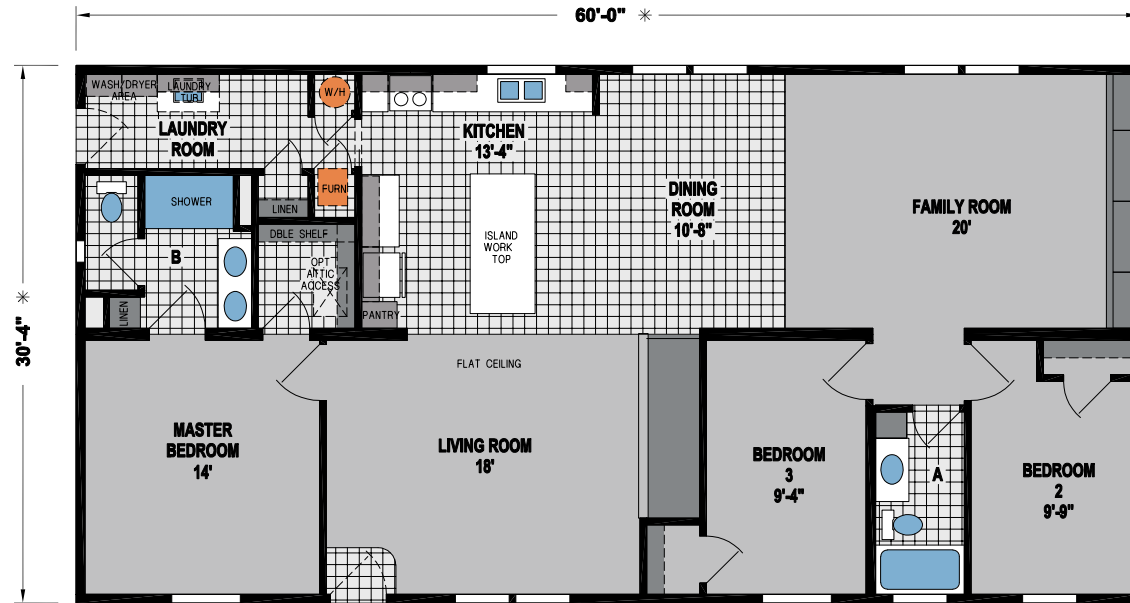


OPTION ISLAND KITCHEN

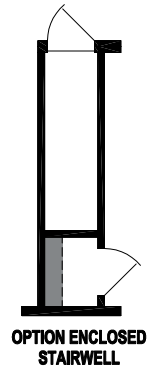
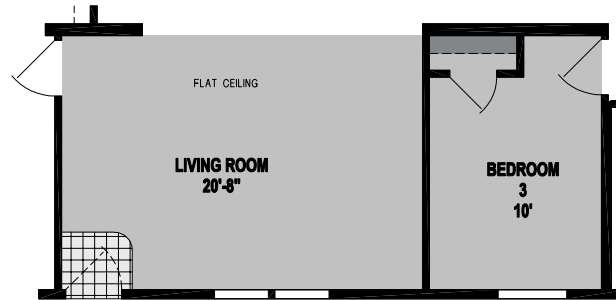
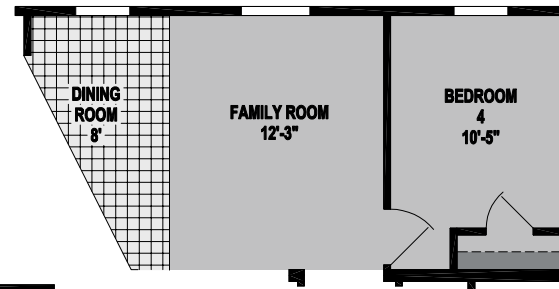
HILLCREST
7740MG
3 BED-2 BATH
1685 SQ.FT.

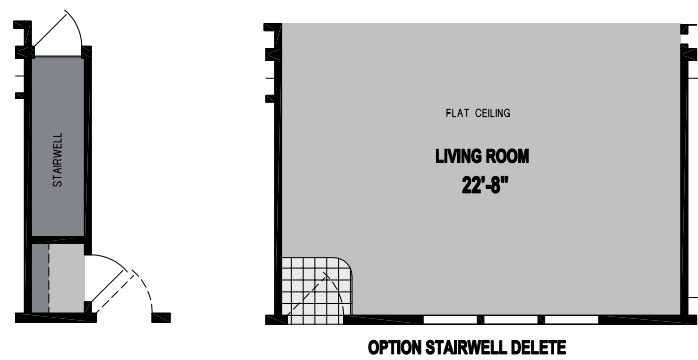
HILLCREST
7858MG

3 BED-2 BATH
1820 SQ.FT.



OPTION SLIDING GLASS DOOR

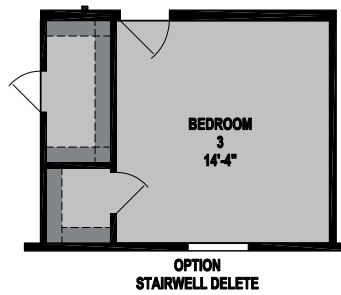
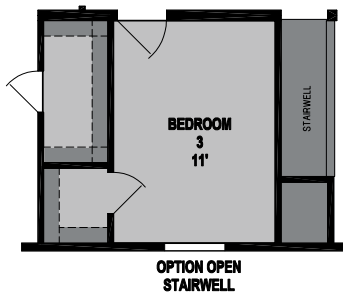
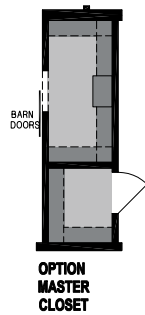
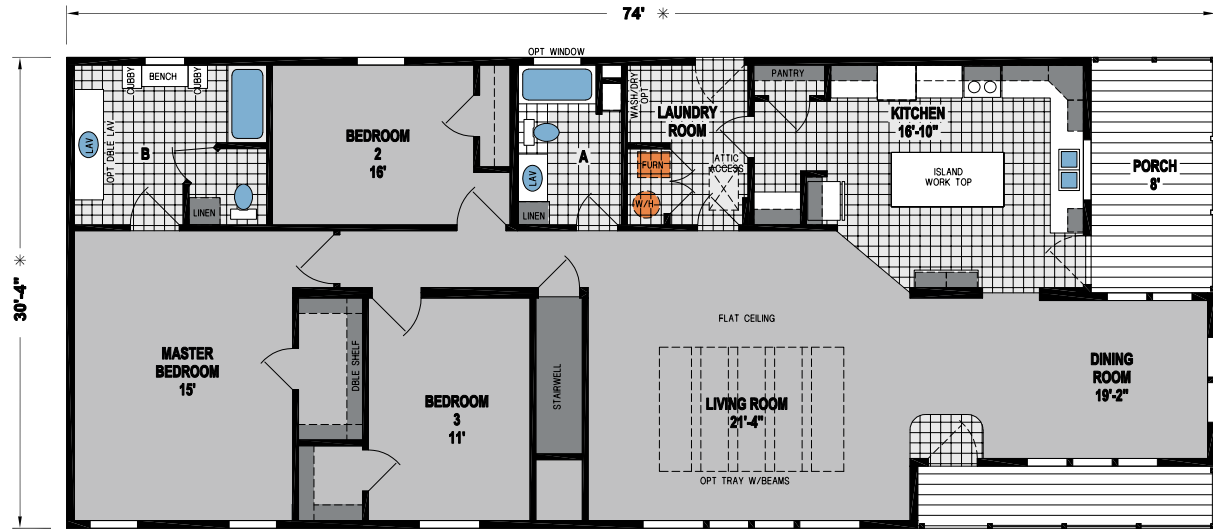
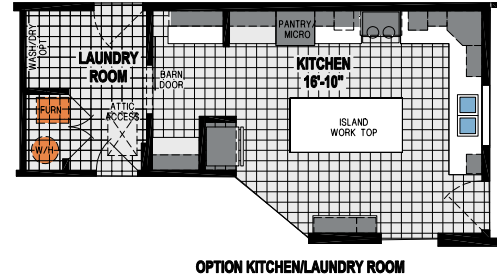
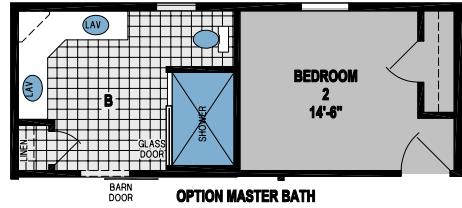




HILLCREST
7866MG

3 BED-2 BATH
1941 SQ.FT.

HILLCREST
7880MG
 3 BED-2 BATH
 2046 SQ.FT.



HILLCREST SERIES

STANDARD FEATURES

CONSTRUCTION

- 8' Sidewall
- 3/8" OSB Exterior Sheathing
- 40 lb. Roof Construction
- 2 x 4 Interior Walls
- 2 x 6 Sidewall, 16" O. C.
- 2 x 10 Floor Joists, 16" O. C. (Double 2 x 10 at Perimeter)
- Double 2 x 12 Floor Center Beam
- OSB Tongue and Groove Floor Decking
- Exterior House Wrap
- In-Floor Crossovers
- Insulation: R-19 Walls, R-33 Ceiling – The Higher the "R" Value, the Greater the Insulating Power

EXTERIOR

- 36" Rectangle Bevel Chip Front Exterior Door
- 36" Smooth Fiberglass 9-Lite Rear Door
- Metal Lever-Latch Door Handles
- Dual Glazed Vinyl Windows with Low-E Glass Window Grids
- Egress Windows in Bedrooms
- Residential 5/12 Roof Pitch with 30-Year Architectural Shingles and Ridge Vent
- Vinyl Dutch Lap Siding
- Shutters or Lineals (Doorside)
- Bath Windows

HEATING / UTILITY

- High-Efficiency Gas or Electric Furnace
- Perimeter Heating
- Toe-Kick Registers at Kitchen and Bathrooms
- Loop Duct HVAC

PLUMBING / ELECTRICAL

- 50-Gallon Electric Water Heater
- PEX Water Lines
- Water Lines Installed
- Water Shut-Off Valve at All Sinks and Commodes
- Smoke Detector with Battery Backup and False Alarm Control
- Iron Gas Piping with Shut-Off Valves
- Water Hammer at Kitchen Sink and Washer
- Exterior Frost-Free Faucet

INTERIOR

- 2-1/4" Window and Door Casing Throughout
- 2-1/4" Window and Door Molding Throughout
- 3" Ceiling Crown Throughout
- 3" Base Trim Throughout
- Factory-Installed Carpet – Living Areas
- Factory-Installed Carpet Pad
- Chandelier Dining Light or (2) LED Can Lights – Dining Room
- 1/2" Vinyl Mini Blinds Throughout
- 1/2" Finished and Painted Drywall Throughout
- Ventilated Wire Shelving in Closets
- Prefinished Door Jambs
- Textured Ceiling
- Vinyl Floor at Entry

KITCHEN

- Hardwood Cabinet Doors with Residential Hidden Hinges
- 42" Kitchen Cabinets
- Hardwood Stiles and Rails
- Soft-Close Full Extension Drawer Guides
- (2) Shelves in Base Cabinets
- Lined Overhead Cabinets
- Drawer Over Door Cabinet Construction
- Knobs or Modern Handles
- 8" Deep Stainless Steel Sink
- Waterfall Kitchen Faucet
- 4" Ceramic Backsplash at Countertop
- 18 Cu. Ft. Double Door Frost-Free Refrigerator
- 30" Deluxe Gas Range with Lighted Power Hood
- Pantry with Drawer Bank (Per Floor Plan)
- LED Can Lights

BATHROOM

- Decorative Mirror
- Privacy Locks
- Hardwood Cabinet Doors with Residential Hidden Hinges
- 1-Piece Fiberglass Tub – Hall Bath
- 60" Sit-Down Shower – Master Bath (Per Floor Plan)
- Linen Cabinet with Drawer Bank – Master Bath (Per Floor Plan)
- Lighted Vent Fan Combo
- Vanity Drawer Bank (Per Floor Plan)
- Extra Vanity – Master Bath
- China Sink with Overflow and Pop-Up Drain
- 4" Ceramic Backsplash at Vanity
- Single-Lever Bath Faucets
- Elongated China Commodes
- 36" Vanity – Bathrooms

Due to continuous product development and improvement, prices, specifications, and materials are subject to change without notice or obligation. Square footage and other dimensions are approximate. Exterior images may be artist renderings and are not intended to be an accurate representation of the home. Renderings, photos and floor plans may be shown with optional features or third-party additions.

SKYLINE[®]

Built in Sugarcreek, OH