

SUMMIT

FAMILY
of HOMES

from the Redman Advantage Series

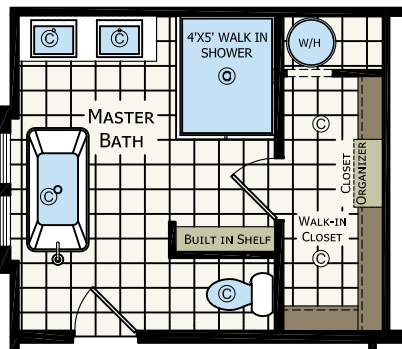
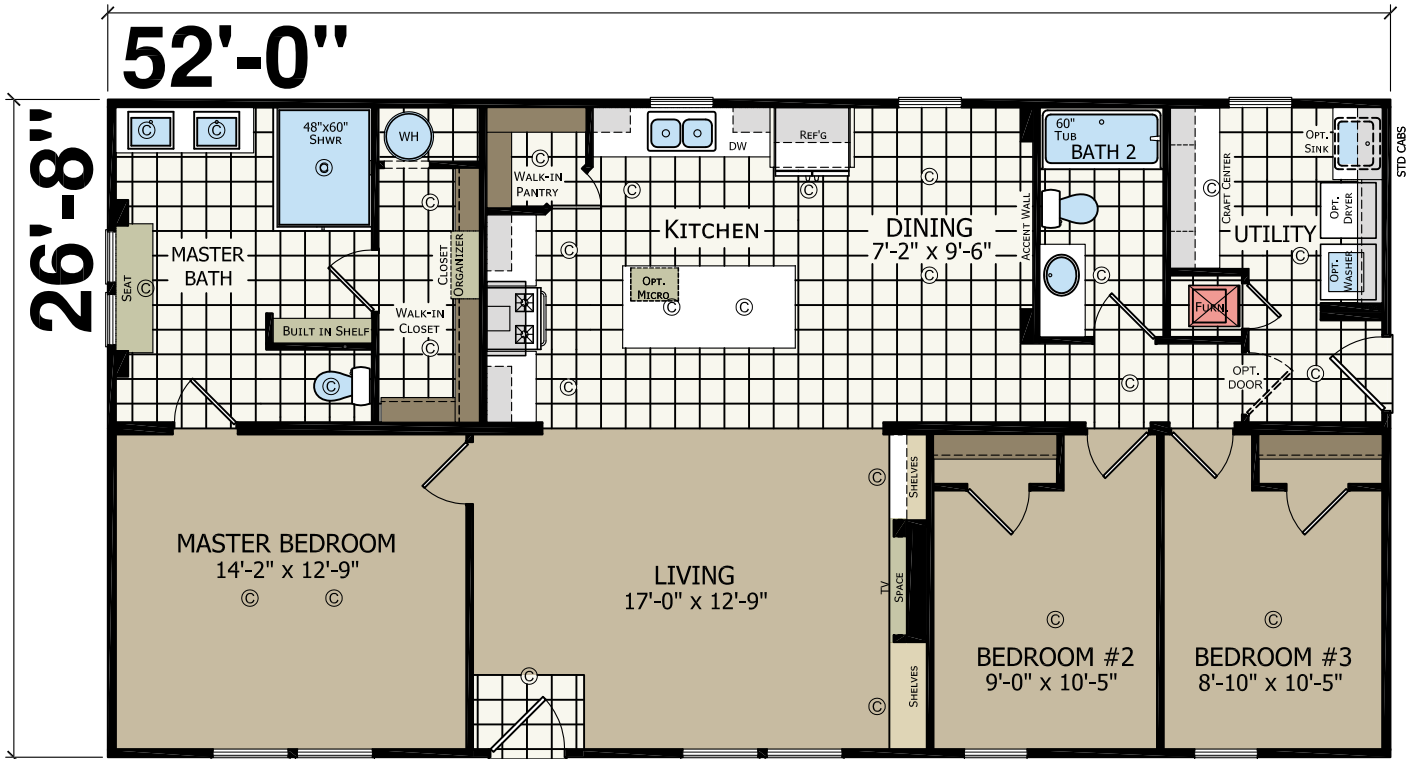
SUMMIT

FAMILY
of HOMES

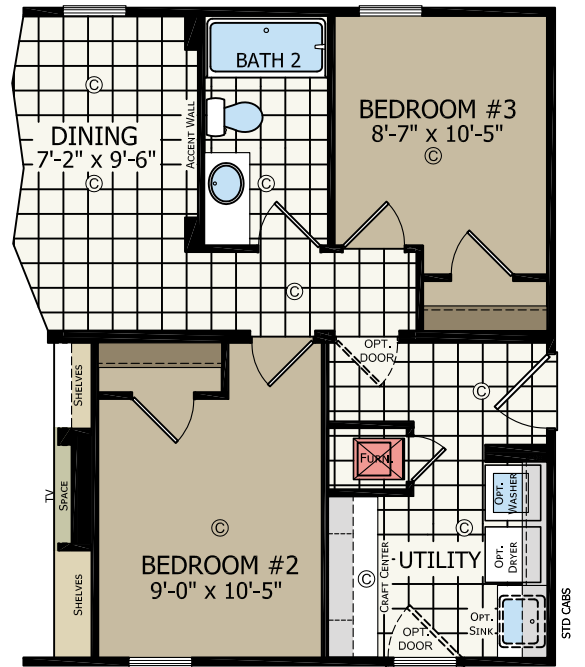


SUMMIT 52'

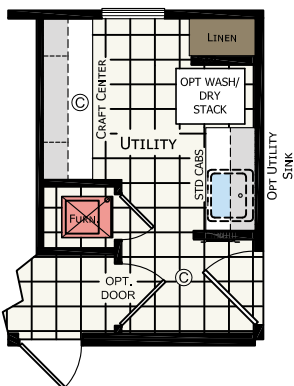
2856 237 | 3 bed-2 bath | 1386 sq.ft.



OPTIONAL MASTER BATH



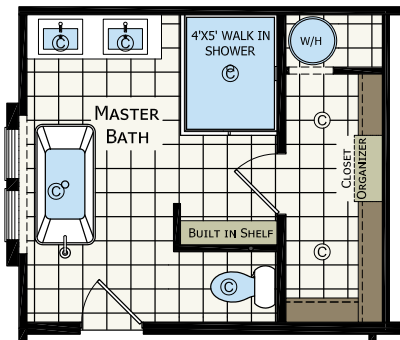
OPTIONAL FRONT ENTRY



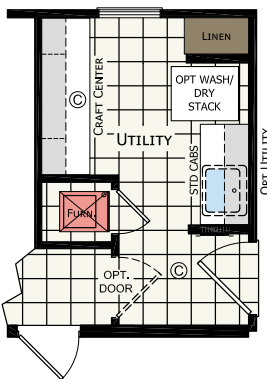
OPTIONAL UTILITY ROOM "B"

SUMMIT 56'

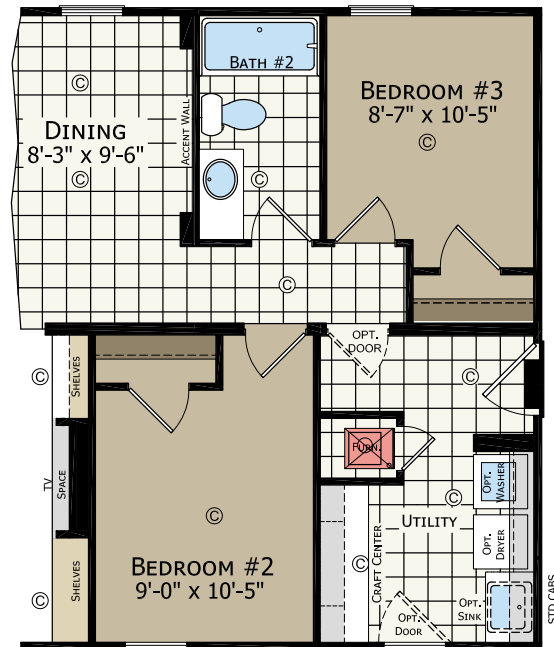
2860 237 | 3 bed-2 bath | 1493 sq.ft.



OPTIONAL MASTER BATH



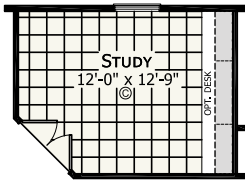
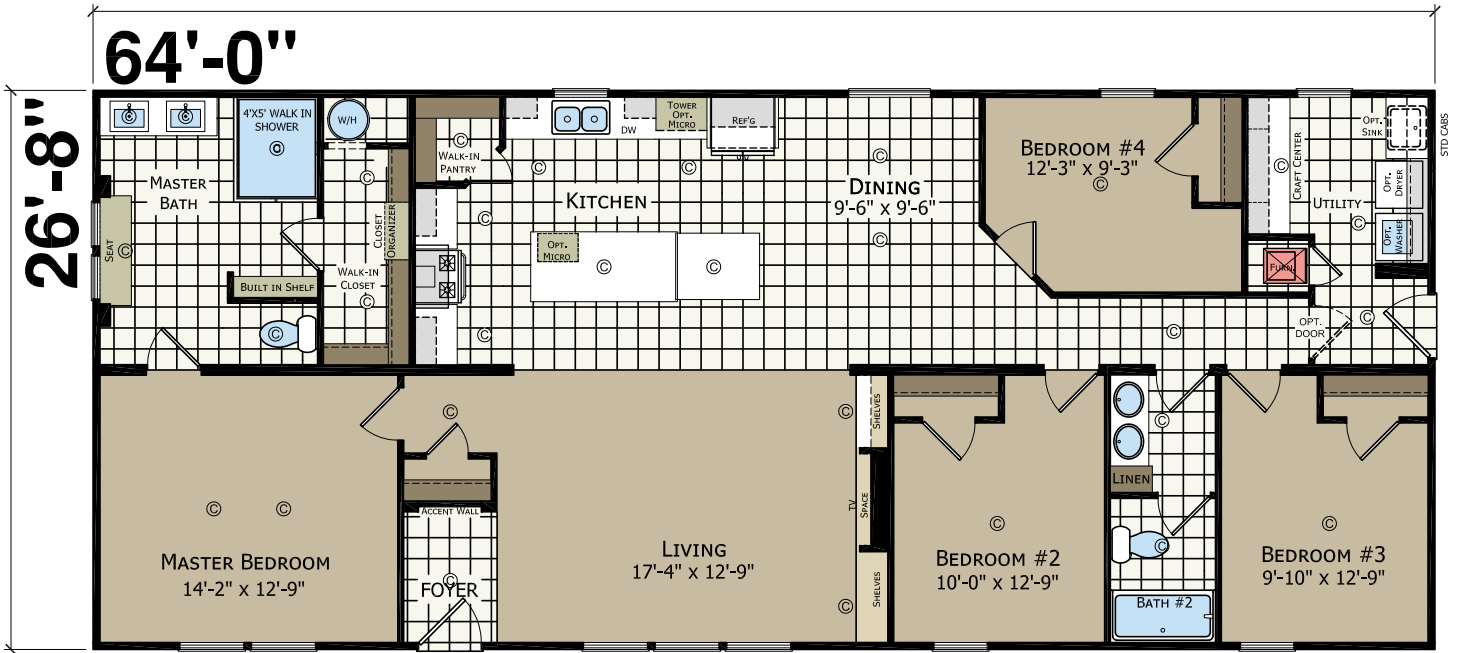
OPTIONAL UTILITY ROOM "B"



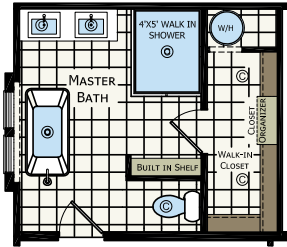
OPTIONAL FRONT ENTRY

SUMMIT 64'

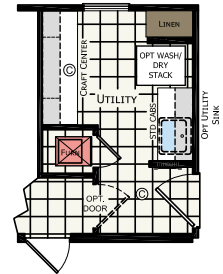
2868 237 | 4 bed-2 bath | 1706 sq.ft.



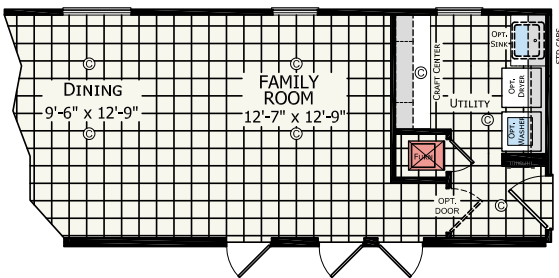
OPTIONAL STUDY



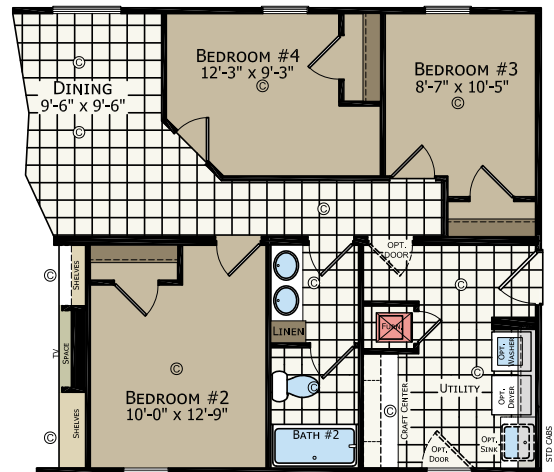
OPTIONAL MASTER BATH



OPTIONAL UTILITY ROOM "B"



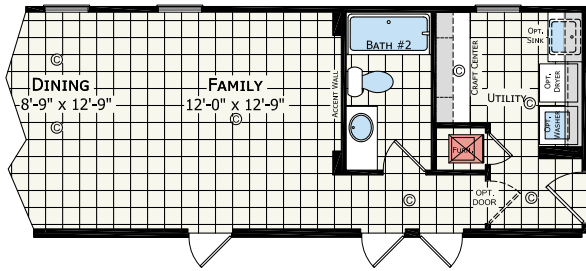
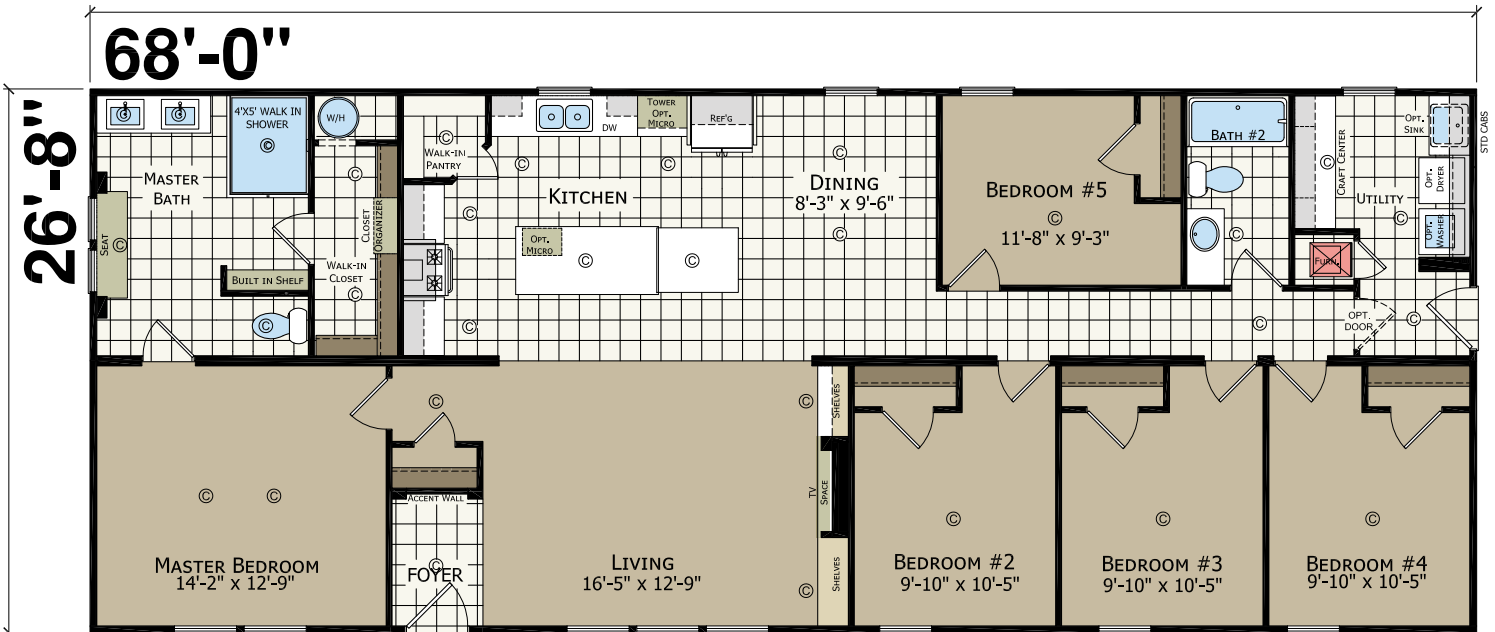
OPTIONAL FAMILY ROOM



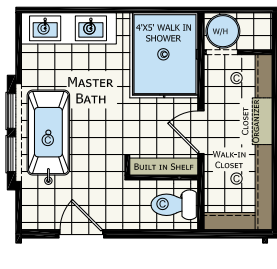
OPTIONAL FRONT ENTRY

SUMMIT 68'

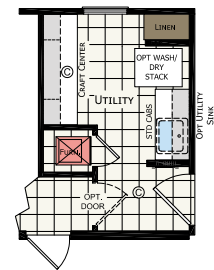
2872 237 | 5 bed-2 bath | 1813 sq.ft.



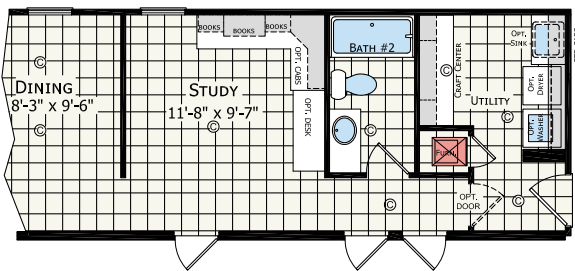
OPTIONAL FAMILY ROOM



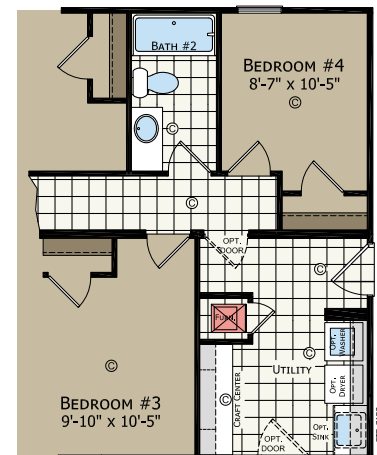
OPTIONAL MASTER BATH



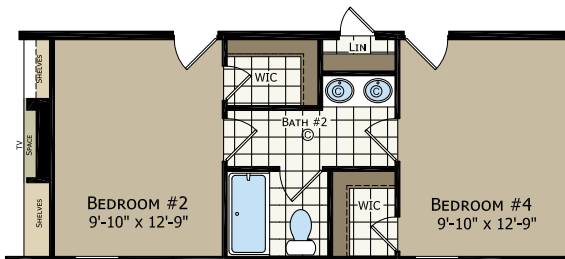
OPTIONAL UTILITY ROOM "B"



OPTIONAL STUDY



OPTIONAL FRONT ENTRY



OPTIONAL JACK/JILL BATH
N/A W/ OPTIONAL FRONT ENTRY

SUMMIT

STANDARD FEATURES

STRUCTURAL

Recessed Frame
Detachable Hitch
48" OC Outriggers
2 x 4 Exterior Sidewalls - 16" OC
(28') 2 x 6 Floor Joist - 16" OC
(32') 2 x 8 Floor Joist - 16" OC
R-11 Sidewall Insulation
R-11 Floor Insulation with
 Additional R-11 Outside Beams
R-28 Roof Insulation
5/8" OSB Decking T & G
7/16" OSB Roof Sheathing
30lb PSF Roof Load
Elevation "A"
 Gables, Lineals & Shake

INTERIOR FINISH

Drywall Throughout
Arena Carpet
Tack Strip
5Lb Rebond Carpet Pad
Beauflor - Designers Choice
Wire Shelving In Closets
Smoke Alarms W / Battery Backup
2 1/4" Door Casing - L/A
3" White Base Moulding - L/A
618 Flat All Else
Finished Ceiling Joints - L/A
Formica Countertops
Self Edge Countertops
Platinum Light Fixtures
Entertainment Cnt - Per Print
Recessed Electric Fireplace
 w/ Ship Lap & Barn Door
Ship Lap Accent At Entry

EXTERIOR

8' Sidewalls
Nominal 3/12 Roof Pitch
25 Year Shingles
House Wrap
Dutch Lap 4" Vinyl Siding
OSB Wrap
White Vented Soffit
Exterior Light - Rear Door

KITCHEN / BATHROOMS

Black Ss Smoothtop Range
Stnl Stl Euro Range Hood
Black Ss Side By Side Refer
Black Ss Dishwasher
Black Ss Microwave
 <=52' Boxbuilt In Island Only
 >52' Box Built In Tower Or Island
Hardwood Cabinets
Hardwood Stiles
6" Uk2 Style Handles T/O
Center Shelves In Base Cabs
Single Bank Of Drawers - Vbp
Refer O/H - Open Shelves
Luan Side Panels
Quartz Countertop - Kit
Formica Waterfall - Island
Stnl Stl Undermount Sink
 Single Lever Metal Faucet
One Row Ceramic Backsplash - Kit
Ceramic Tile Between Range & Hood
Agile Panle Shower W/2 Sided Glass
Rain Shower Head
Furniture Style Lav w/Cultured Marbled C/T
 Master Bath
2 Rows Subway Tile In Mbath
Furniture Style Lav W / Formica C/T
 Hall Bath
Euro Metal Faucets - Mbath
(2) Led Lighted Mirrors - Mbath
Round Commode
China Lavs - Hall Baths
Lighted Bath Fan

WINDOWS & DOORS

6 Pnl Residential Frt Door
6 Pnl Residential Rear Door
Low E Single Hung Vinyl 6/6
 Gridded (Sizes Vbp)
2" Mini Blinds Throughout
6 Panel White Interior Doors
2-Mortised Hinges
Nickel Round Knobs
Furnace Door (Standard Wood)

HEATING/PLUMBING/ELECTRIC

Electric Furnace
Aluminum Heat Ducts
In-Line Floor Registers
200 Amp Service
(1) Exterior Recept
All Copper Wiring
Plumb For Washer
Wire For Electric Dryer
Pex Water Lines
30 Gallon Electric Water Heater
Main Water Shut Off
Frost Free Faucet (1)
Led Can Lights T/O
7 Can Lights In Kit W/Dimmer

VBP=Varies by plan

Note: Atrium Doors and Patio Door will no longer come standard with Grids

Due to continuous product development and improvement, prices, specifications, and materials are subject to change without notice or obligation. Square footage and other dimensions are approximate. Exterior images may be artist renderings and are not intended to be an accurate representation of the home. Renderings, photos and floor plans may be shown with optional features or third-party additions.



308 Sheridan Drive
Topeka, IN 46571

www.Redmanhomesofindiana.com

CHAMPION®

MANUFACTURED BEAUTIFULLY™