

We Can Replace Your Dreams With Reality!



10197 US 127
Clarklake MI 49234

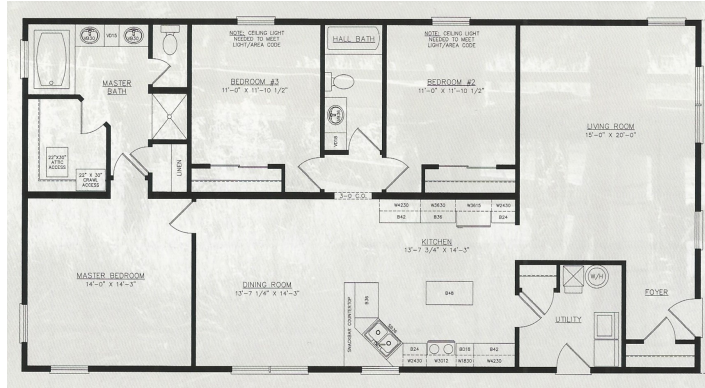
(517)206-2435

LegendaryHomesInc.com

3/5/20

Heckaman Modular Home - 30' x 58'
Kentucky

1,740 Sq Ft



| | |
|--|------------------|
| Base price of Heckaman Homes Kentucky | \$112,742 |
| Includes Finished Set on foundation, Drywall finish, Side Ends, Seem Carpet | |
| Includes Sales Tax and Freight within 30 Miles of Our Model Home. | |
| Crane Allowance (\$4,000 included in base price) Extra Depending on distance. Also \$1,500 for bracing | \$2,500 |
| Modular Seals and State Dues on Modular Home | \$340 |
| Basement Entry | \$250 |
| Pex Water Lines | \$750 |
| Radon Vent | \$40 |
| Reinforced Ceiling Box with double switches (\$35 ea) | \$35 |
| Shower Ceiling Light | \$80 |
| Exterior Finish – Windows and Exterior Doors | 880 |
| Andersen Silverline 6' Sliding Patio Door – White (IPO 1 Window) | \$595 |
| Craftsman Front Exterior Door – (BLS-217-061-2) w/No Shelf | \$285 |
| Blocking for Foundation | \$645 |
| Allowance for Options | \$3,000 |
| Allowance for Appliances (To be ordered by customer and delivered locally) | \$1,500 |
| Subtotal of Options | \$10,900 |
| Sales Tax on Options | <u>\$654</u> |
| Total House and Options | \$124,296 |
| (Cost Per Square Foot: \$71.43) | |

"On Site" Costs On 9' Insulated PreCast Basement **Legendary Homes (517)206-2435**

03/05/20

Legendary Homes will oversee the construction and do the following as a package. Here are some approx costs.
We can get you actual quotes upon your request. Prices are subject to change without notice until contract is signed.

\$124,296 Heckaman Homes Kentucky With Above Options

| | |
|------------------|--|
| \$15,540 | 30' x 58' x 9' Insulated Precast Basement Walls – Includes 15 Year Warranty |
| \$4,865 | Footers For Insulated Precast Basement – Crushed Stone, Tile and Crock |
| \$7,360 | Poured Basement Floor |
| \$5,650 | Excavation - Dig, Backfill, Rough/Finish Grade - Some settling will occur <u>SAND FILL IS EXTRA</u> |
| \$3,127 | 4" Center Stone Under Floor |
| \$1,990 | Install Sill Plate, Basement Jack Post - Lagging and Bracing house - Material and Labor |
| \$450 | Insulate Rim/Band Board |
| \$395 | 1 - Standard Size Basement Windows - White Vinyl Window and Treated Lumber Trim |
| \$1,800 | 4 x 4 Egress Basement Window with PVC Trim and Escape Well |
| \$1,800 | Permits - Building Permit, Zoning Permit, Well & Septic Permit, Driveway Permit – Area can vary on costs |
| \$2,850 | Plumbing Line Hook Ups and On Site Prep Work for Radon Gas |
| \$2,980 | Electrical (with Disconnect) <u>INCLUDES GENERATOR HOOK UP</u> |
| \$2,250 | Basement Stairway - Enclosed Finished drywall with hand rail |
| \$6,393 | 96% Gas Furnace and Ductwork, Run Gas Line to Furnace and Water Heater, Dryer Vent |
| \$1,795 | 40 Gal Power Vent Water Heater |
| \$1,490 | Run Gas Line for Furnace and Water Heater |
| \$3,190 | Central Air |
| \$5,840 | 5" Well - 1/2 hp pump, up to 100 ft deep - \$23 @ Ft over 100 ft |
| \$6,550 | Septic System – Standard System (gravity flow) <u>-NO SAND FILL INCLUDED</u> |
| \$1,150 | Seamless Gutters and Down Spouts |
| \$1,100 | Sump Pump and Run line for dry well |
| \$1,650 | 2 Sets of Wood Standard Steps with Platform, Front, Rear or Side Doors |
| \$690 | Garbage Dump Trailer and Clean Up |
| <u>\$1,300</u> | Misc |
| \$206,501 | Grand Total Without Garage (Cost Per Square Foot: \$118.68) |

24' x 24' Garage

| | |
|------------------|---|
| \$11,900 | Lumber and Labor for 24' x 24' Garage - 5/12 Roof |
| \$3,890 | PreCast Foundation Walls - INCLUDES 15 YR WARRANTY |
| \$2,848 | Concrete Floor |
| \$1,800 | Footers For Insulated Precast Foundation – Corner Pins, Compact Footings |
| \$2,150 | Excavation - Fill, compact - SAND NEEDED HAULED IN IS EXTRA |
| \$240 | 3 Exterior Light Fixtures |
| \$450 | Entry Door and Lock Set for Garage |
| \$1,095 | 16' x 7' Insulated Garage Door |
| \$475 | Garage Door Opener |
| <u>\$890</u> | Electrical in Garage (Includes 3 way Switch for Entry Door) |
| \$232,239 | Grand Total With Garage (Cost Per Square Foot: \$133.47) |

Possible Extras

*****Above Prices Subject to Change Upon Site Evaluation and Job Location**

| | |
|-------|---|
| \$750 | Optional – Dozer to come back to finish grade complete job after everything is done |
| \$595 | Energy Upgrade Package - Includes Energy Light Bulbs, R-30 Insulation at Rim |
| ? | Driveway - Depends on Type of Material Used |
| \$490 | Blower Door Test (Depends on Building Inspector) |