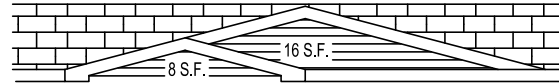


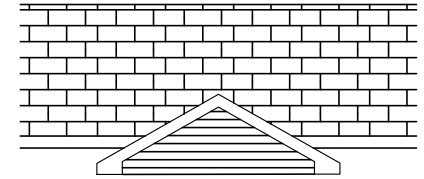
**SHIP LOOSE DOUBLE  
DORMER "M1"**

5/12 OR 7/12 ROOF, ANY WALL HEIGHT, SHAKE  
NOT INCLUDED



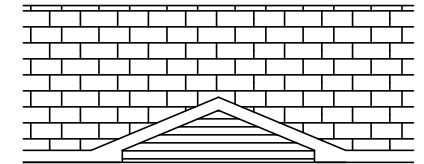
**DOUBLE DORMER "M2"**

3/12 ROOF ONLY  
MAY BE USED WITH 8'X6" BUMPOUT



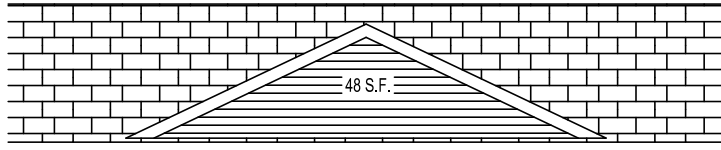
**8' DROP EAVE DORMER "X5"**

12 S.F.  
ANY ROOF PITCH, ANY WALL HEIGHT



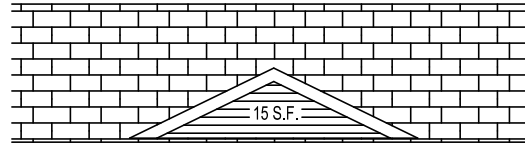
**10' DORMER "X6"**

15 S.F.  
3/12 OR 5/12 ROOF PITCH, 8' WALL HEIGHT



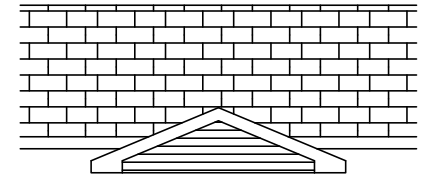
**SHIP LOOSE 20' DORMER  
"M3"**

5/12 OR 7/12 ROOF, ANY WALL HEIGHT



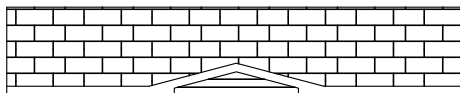
**SHIP LOOSE 12' DORMER  
"M4"**

5/12 OR 7/12 ROOF, ANY WALL HEIGHT



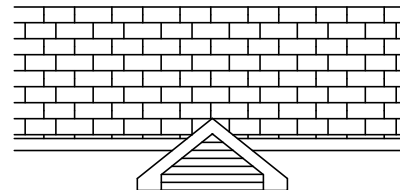
**10' DROP EAVE DORMER "X2"**

16 S.F.  
ANY ROOF PITCH, ANY WALL HEIGHT



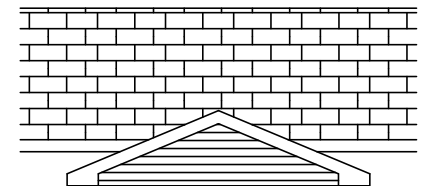
**6' DORMER "X1"**

10 S.F.  
ANY ROOF PITCH, ANY WALL HEIGHT



**6' DROP EAVE DORMER "M6"**

10 S.F.  
ANY ROOF PITCH, ANY WALL HEIGHT



**12' DROP EAVE DORMER "X3"**

20 S.F.  
3/12, 5/12 ROOF PITCH, 8' WALL HEIGHT



308 SHERIDAN DRIVE TOPEKA, IN 46571

APPROVER'S SEAL

MODIFICATIONS

2	CLARIFIED BAYS		04-17-14
3	REVISED ELEVATION "D"	JMD	10-13-15
4	CLARIFIED DORMERS	JMD	01-12-16
5	REVISED ELEV #S	JMD	01-05-17

PROPRIETARY AND CONFIDENTIAL  
THESE DRAWINGS AND SPECIFICATIONS ARE ORIGINAL,  
PROPRIETARY AND CONFIDENTIAL MATERIALS OF CHAMPION.  
COPYRIGHT © 1976-2008 BY CHAMPION

MODEL: MOD ONLY DORMERS

TITLE:

DRAWN BY: JDRAKE

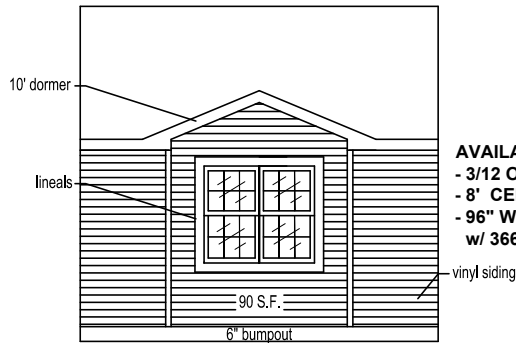
DATE: 04-29-11

SCALE: NTS

SHEET:

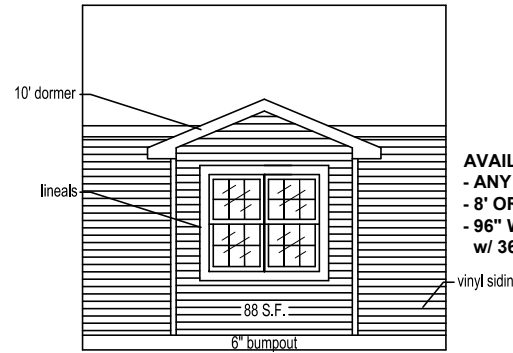
**MD-01**

**REV. E**



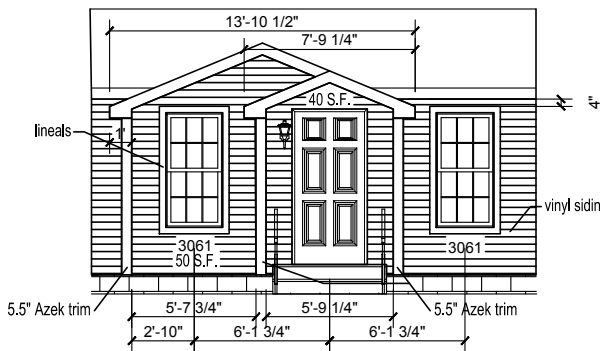
**AVAILABLE ON:**  
 - 3/12 OR 5/12 ROOF PITCH  
 - 8' CEILING HEIGHT  
 - 96" WIDE BUMPOUT ONLY  
 w/ 3661 WINDOWS ONLY.

**ELEVATION "M11"**  
 10' DORMER  
 6" BUMPOUT



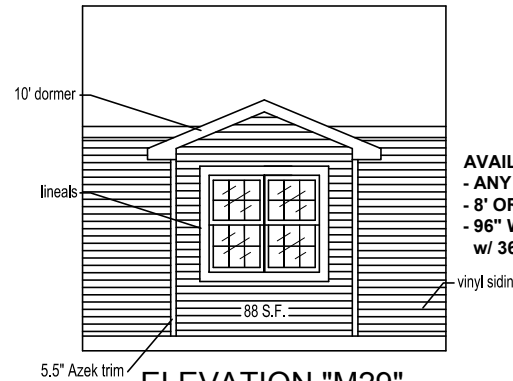
**AVAILABLE ON:**  
 - ANY ROOF PITCH  
 - 8' OR 9' CEILING HEIGHT  
 - 96" WIDE BUMPOUT ONLY  
 w/ 3661 WINDOWS ONLY.

**ELEVATION "M12"**  
 10' DROP EAVE DORMER  
 6" BUMPOUT



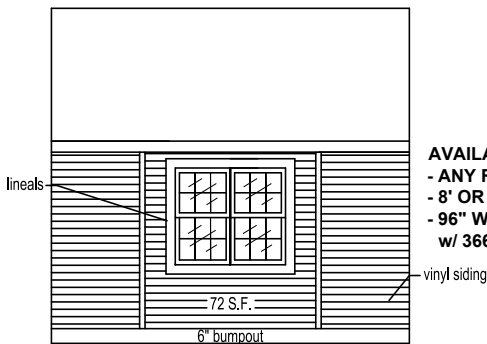
**AVAILABLE ON:**  
 - 3/12 OR 5/12 ROOF PITCH  
 - 8' CEILING HEIGHT  
 - WINDOWS/DOORS ARE NOT INCLUDED.  
 -ACTUAL WINDOW/DOOR LAYOUT MAY DIFFER FROM WHAT IS SHOWN.

**ELEVATION "X9"**  
 13'-6" DROP EAVE DORMER  
 10' FAUX BUMPOUT



**AVAILABLE ON:**  
 - ANY ROOF PITCH  
 - 8' OR 9' CEILING HEIGHT  
 - 96" WIDE BUMPOUT ONLY  
 w/ 3661 WINDOWS ONLY.

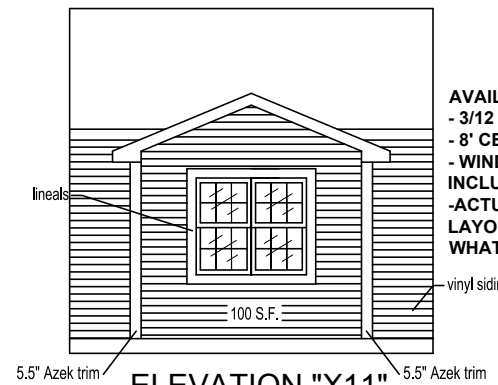
**ELEVATION "M29"**  
 10' DROP EAVE DORMER  
 8' FAUX BUMPOUT



**AVAILABLE ON:**  
 - ANY ROOF PITCH  
 - 8' OR 9' CEILING HEIGHT  
 - 96" WIDE BUMPOUT ONLY  
 w/ 3661 WINDOWS ONLY.

**ELEVATION "M14"**  
 6" BUMPOUT

**28 WIDE**



**AVAILABLE ON:**  
 - 3/12 OR 5/12 ROOF PITCH  
 - 8' CEILING HEIGHT  
 - WINDOWS ARE NOT INCLUDED.  
 -ACTUAL WINDOW/DOOR LAYOUT MAY DIFFER FROM WHAT IS SHOWN.

**ELEVATION "X11"**  
 12' DROP EAVE DORMER



308 SHERIDAN DRIVE TOPEKA, IN 46571

APPROVER'S SEAL

MODIFICATIONS

4	CLARIFIED DORMERS	JMD	01-12-16
5	REVISED S.F. M14/M19	JMD	09-14-16
6	REVISED ELEV #S	JMD	01-05-17
7	REVISED X9	JMD	01-19-17

PROPRIETARY AND CONFIDENTIAL  
 THESE DRAWINGS AND SPECIFICATIONS ARE ORIGINAL,  
 PROPRIETARY AND CONFIDENTIAL MATERIALS OF CHAMPION.  
 COPYRIGHT © 1976-2008 BY CHAMPION

MODEL: MOD ONLY DORMERS

TITLE: 28 WIDE DORMERS

DRAWN BY: JDRAKE

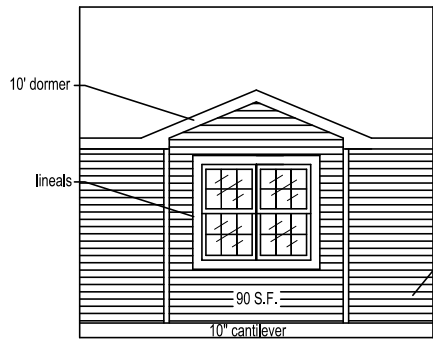
DATE: 04-29-11

SCALE: NTS

SHEET:

MD-02

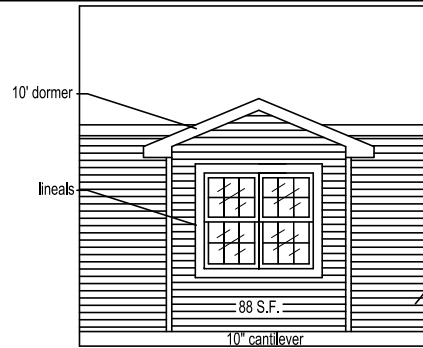
REV. G



AVAILABLE ON:  
 - 3/12 OR 5/12 ROOF PITCH  
 - 8' CEILING HEIGHT  
 - 96" WIDE BUMP OUT ONLY  
 w/ 3661 WINDOWS ONLY.

**ELEVATION "M16"**

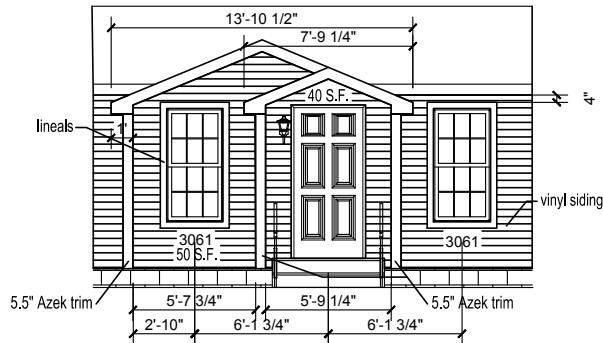
10' DORMER  
 10" CANTILEVER



AVAILABLE ON:  
 - ANY ROOF PITCH  
 - 8' OR 9' CEILING HEIGHT  
 - 96" WIDE BUMP OUT ONLY  
 w/ 3661 WINDOWS ONLY.

**ELEVATION "M17"**

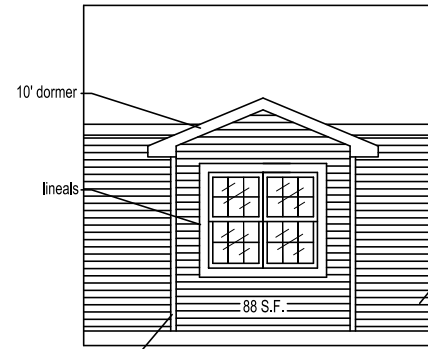
10' DROP EAVE DORMER  
 10" CANTILEVER



AVAILABLE ON:  
 - 3/12 OR 5/12 ROOF PITCH  
 - 8' CEILING HEIGHT  
 - WINDOWS/DOORS ARE NOT INCLUDED.  
 -ACTUAL WINDOW/DOOR LAYOUT MAY DIFFER FROM WHAT IS SHOWN.

**ELEVATION "X9"**

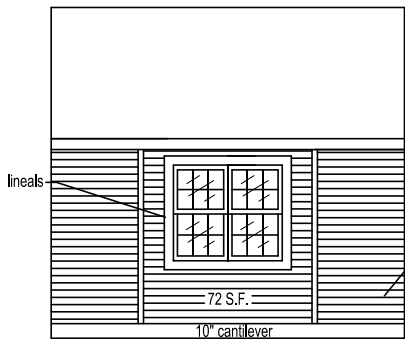
13'-6" DROP EAVE DORMER  
 10' FAUX BUMPOUT



AVAILABLE ON:  
 - ANY ROOF PITCH  
 - 8' OR 9' CEILING HEIGHT  
 - 96" WIDE BUMP OUT ONLY  
 w/ 3661 WINDOWS ONLY.

**ELEVATION "M30"**

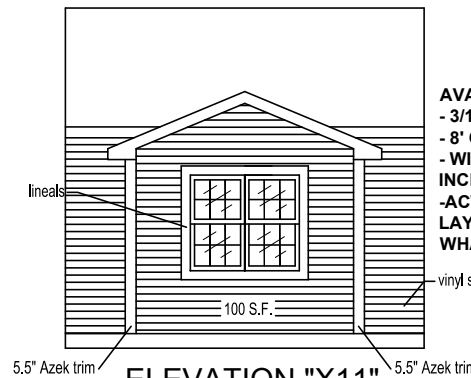
10' DROP EAVE DORMER  
 8' FAUX BUMPOUT



AVAILABLE ON:  
 - ANY ROOF PITCH  
 - 8' OR 9' CEILING HEIGHT  
 - 96" WIDE BUMP OUT ONLY  
 w/ 3661 WINDOWS ONLY.

**ELEVATION "M19"**

10" CANTILEVER



AVAILABLE ON:  
 - 3/12 OR 5/12 ROOF PITCH  
 - 8' CEILING HEIGHT  
 - WINDOWS ARE NOT INCLUDED.  
 -ACTUAL WINDOW/DOOR LAYOUT MAY DIFFER FROM WHAT IS SHOWN.

**ELEVATION "X11"**

12' DROP EAVE DORMER  
 10' FAUX BUMPOUT

**30 WIDE**



308 SHERIDAN DRIVE TOPEKA, IN 46571

APPROVER'S SEAL

MODIFICATIONS

4	CLARIFIED DORMERS	JMD	01-12-16
5	REVISED S.F. M14/M19	JMD	09-14-16
6	REVISED ELEV #S	JMD	01-05-17
7	REVISED X9	JMD	01-19-17

PROPRIETARY AND CONFIDENTIAL  
 THESE DRAWINGS AND SPECIFICATIONS ARE ORIGINAL,  
 PROPRIETARY AND CONFIDENTIAL MATERIALS OF CHAMPION.  
 COPYRIGHT © 1976-2008 BY CHAMPION

MODEL: MOD ONLY DORMERS

TITLE: 30 WIDE DORMERS

DRAWN BY: JDRAKE

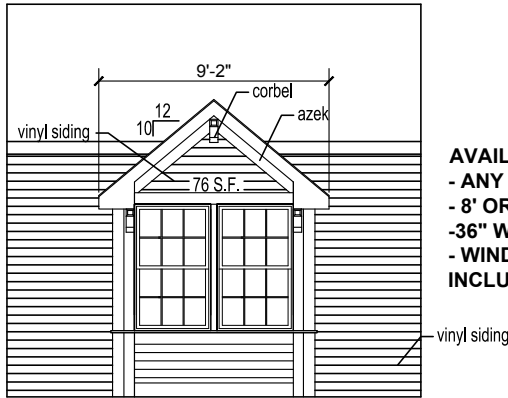
DATE: 04-29-11

SCALE: NTS

SHEET:

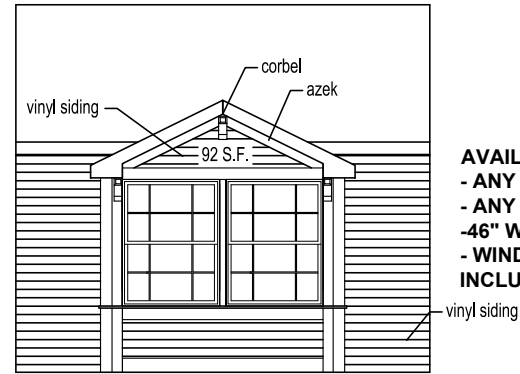
MD-03

REV. G



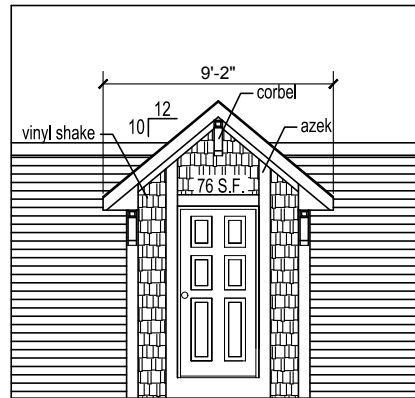
**9' DORMER "M21"**  
 9' DROP EAVE DORMER  
 7' FAUX BUMPOUT  
 AZEK TRIM/CORBELS

**AVAILABLE ON:**  
 - ANY ROOF PITCH  
 - 8' OR 9' CEILING HEIGHT  
 -36" WIDE WINDOWS ONLY  
 - WINDOWS/DOORS ARE NOT INCLUDED.



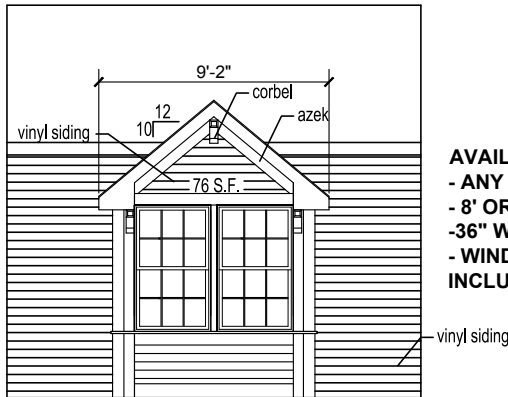
**ELEVATION "X7"**  
 10' DROP EAVE DORMER  
 9'6" FAUX BUMPOUT  
 AZEK TRIM/CORBELS

**AVAILABLE ON:**  
 - ANY ROOF PITCH  
 - ANY CEILING HEIGHT  
 -46" WIDE WINDOWS ONLY  
 - WINDOWS/DOORS ARE NOT INCLUDED.



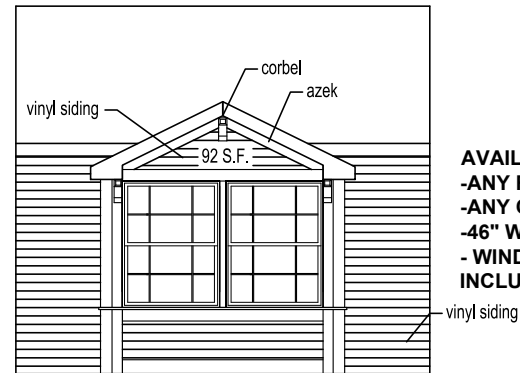
**9' DORMER "X8"**  
 9' DROP EAVE DORMER  
 7' FAUX BUMPOUT  
 AZEK TRIM/SHAKE CORBELS

**AVAILABLE ON:**  
 - ANY ROOF PITCH  
 - ANY CEILING HEIGHT  
 - WINDOWS/DOORS ARE NOT INCLUDED.



**9' DORMER "M24"**  
 9' DROP EAVE DORMER  
 7'X6" BUMPOUT  
 AZEK TRIM/CORBELS

**AVAILABLE ON:**  
 - ANY ROOF PITCH  
 - 8' OR 9' CEILING HEIGHT  
 -36" WIDE WINDOWS ONLY  
 - WINDOWS/DOORS ARE NOT INCLUDED.



**ELEVATION "X10"**  
 10' DROP EAVE DORMER  
 9'6"X6" BUMPOUT  
 AZEK TRIM/CORBELS

**AVAILABLE ON:**  
 -ANY ROOF PITCH  
 -ANY CEILING HEIGHT  
 -46" WIDE WINDOWS ONLY  
 - WINDOWS/DOORS ARE NOT INCLUDED.



308 SHERIDAN DRIVE TOPEKA, IN 46571

APPROVER'S SEAL

MODIFICATIONS

3	REVISED ELEVATION "D"	JMD	10-13-15
4	CLARIFIED DORMERS	JMD	01-12-16
5	REVISED VERBIAGE ON M23	JMD	11-14-16
6	REVISED ELEV #'S	JMD	01-05-17

PROPRIETARY AND CONFIDENTIAL  
 THESE DRAWINGS AND SPECIFICATIONS ARE ORIGINAL,  
 PROPRIETARY AND CONFIDENTIAL MATERIALS OF CHAMPION.  
 COPYRIGHT © 1976-2008 BY CHAMPION

MODEL: MOD ONLY DORMERS

TITLE:

DRAWN BY: JDRAKE

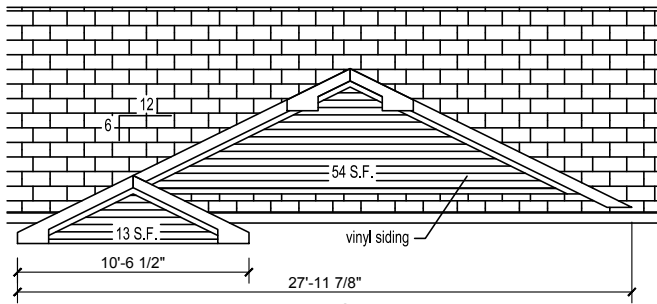
DATE: 04-29-11

SCALE: NTS

SHEET:

**MD-04**

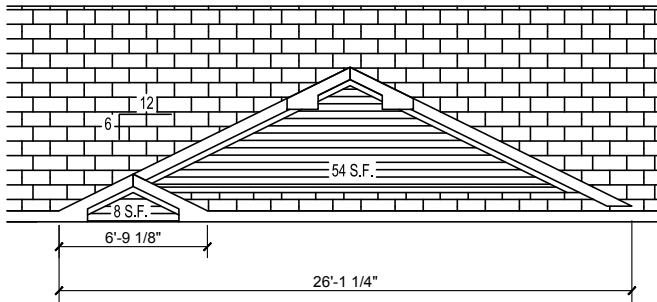
**REV. F**



AVAILABLE ON:  
 - 5/12, 7/12 ROOF PITCH  
 - 8' OR 9' CEILING HEIGHT

**ELEVATION "M26"**

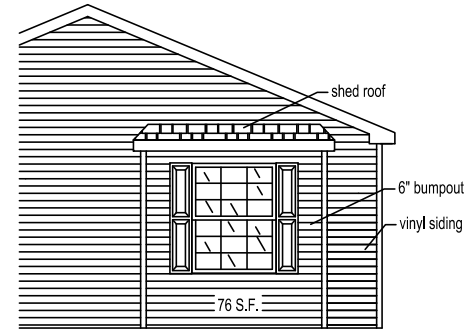
10' DROP EAVE DORMER FACTORY INSTALLED  
 20' DORMER SITE INSTALLED  
 THIS DORMER MAY BE USED WITH ANY OF OUR  
 BUMPOUTS/CANTILEVER BAYS IN MANY  
 COMBINATIONS. PLEASE CHECK WITH  
 ENGINEERING TO BE SURE YOU HAVE ENOUGH  
 SPACE BETWEEN MULTIPLE WINDOWS/DOORS  
 TO MAKE THIS DORMER WORK WITH THE  
 BUMPOUTS/CANTILEVER BAYS.



AVAILABLE ON:  
 - 5/12, 7/12 ROOF PITCH  
 - 8' OR 9' CEILING HEIGHT

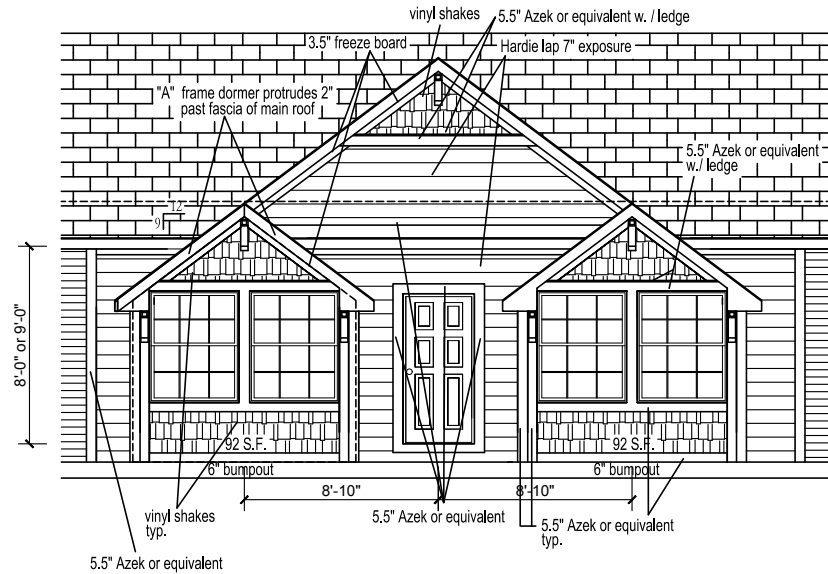
**ELEVATION "M27"**

7' DORMER FACTORY INSTALLED  
 20' DORMER SITE INSTALLED  
 THIS DORMER MAY BE USED WITH MANY OF OUR  
 BUMPOUTS/CANTILEVER BAYS. PLEASE CHECK  
 WITH ENGINEERING TO BE SURE YOU HAVE  
 ENOUGH SPACE BETWEEN MULTIPLE  
 WINDOWS/DOORS TO MAKE THIS DORMER WORK  
 WITH THE BUMPOUTS/CANTILEVER BAYS.



**BOX BAY "X15"**

W/ SHED ROOF, GABLE END ONLY  
 (DOESN'T INCLUDE 46\"/>



**ELEVATION "M28"**

7/12 ROOF PITCH ONLY!  
 DOES NOT INCLUDE DOOR, WINDOWS, OR 7/12 ROOF  
 PITCH. THEY MUST BE OPTIONED IN SEPARATELY.  
 DOES INCLUDE 9/12 DORMER KIT, HARDI, SHAKE,  
 CORBELS, TRIM, AND CAN LIGHT

APPROVER'S SEAL

MODIFICATIONS

MODEL: MOD ONLY DORMERS

SHEET:

3	REVISED ELEVATION "D"	JMD	10-13-15
4	CLARIFIED DORMERS	JMD	01-12-16
5	ADDED BUMPOUTS TO M28	JMD	11-09-16
6	REVISED ELEV #S	JMD	01-05-17

TITLE:

**MD-05**

PROPRIETARY AND CONFIDENTIAL  
 THESE DRAWINGS AND SPECIFICATIONS ARE ORIGINAL,  
 PROPRIETARY AND CONFIDENTIAL MATERIALS OF CHAMPION.  
 COPYRIGHT © 1976-2008 BY CHAMPION

DRAWN BY: JDRAKE

DATE: 04-29-11

SCALE: NTS

REV. F



308 SHERIDAN DRIVE TOPEKA, IN 46571