

Ranch

CUSTOM SERIES

**Heckaman
Homes**



Welcoming families home since 1969!

Table of Contents

Custom Ranch

HOME SERIES

Heckaman Homes is dedicated to providing a home that is the perfect fit for you. All of the homes shown in this publication can be customized to meet your requirements.

PLAN	SQ. FT.	BEDROOMS	BATHS	PAGE NO.
BRIDGEPORT	1,652	3	2	5
BRIDGEWOOD	1,680	3	2	6
BROOKSIDE	1,624	3	2	7
CLAREMONT	2,296	4	2 1/2	8
COUNTRYSIDE	1,680	3	2	9
CRESTRIDGE	1,568	3	2	10
DANBURY	1,652	3	2 1/2	11
GEORGIA	1,800	3	2	12
HAWTHORN	2,380	3	2 1/2	13
HOMESTEAD	1,680	3 OR 4	2	14
KENTUCKY	1,740	3	2	15
LANCASTER	2,044	3	2 1/2	18
MONTGOMERY	1,708	3	2	19
OXFORD	1,680	3	2	20
SOMERSET	1,456	3	2	21
SOUTHWIND	1,512	3	2	22
SUMMIT	2,212	3 OR 4	2	23
SUNNYBROOK	1,456	3	2	24
WESTWOOD	1,652	3	2	25
WILLOWBROOK	1,568	3	2	26
WINCHESTER	1,736	3	2	27
WOODBIDGE	1,736	3	2	28
WYOMING	1,920	3	2	29
YORK	1,884	3	2	30

Heckaman Homes

Made by Craftech Building Systems Inc.

HeckamanHomes.com

IMPORTANT INFORMATION

We have tried to make this brochure comprehensive and factual. We reserve the right, however, to make changes at any time, without notice. The information may have been updated since the time of printing, please check with your builder for complete details.

Note: Elevations are artists renderings only. Due to continuing improvements; designs of windows, doors and colors are subject to change without notice.

The History of Heckaman Homes

Heckaman Homes has been building quality modular homes since its inception in 1969. The current management, Craftech Building Systems, Inc., acquired ownership in 1986. Still working from our original location in Nappanee Indiana, our 90,000 square foot facility sitting on 20 acres, has been in constant production ever since. Throughout the company's history, we have proudly built more than 20,000 homes and still counting!

Heckaman Homes offers 3 distinct product lines consisting of over 100 different floor plans to meet a variety of customer's needs and budgets. The Custom Series offers the homeowner a wide array of options, features, color selections and almost endless modifications using top name brand products. The Freedom and American Value Series offer the same quality construction with slightly fewer options and more value oriented products.

Each model design is subjected to structural analysis and code conformance reviews by an independent professional engineering firm. Every home has its own set of construction drawings that accompany it throughout production, assuring that it will be built in accordance with applicable state and local codes governing one- and two-family dwellings. In addition, every home is inspected by trained personnel of the Indiana Department of Fire Prevention and Building Safety along with an independent third-party agency as required by the destination state.

Heckaman Homes are constructed indoors, shielded from the elements and without the risks of theft or vandalism, and with greater structural integrity than site built homes, since they are designed to withstand the stresses encountered in transportation. All homes are delivered to the building site by trained Heckaman Homes drivers and are crane-set on the home's foundation. Finishing crews are also available as required by each builder. Full-time crews are employed by Heckaman Homes to provide service to homeowners in accordance with their warranty.

Throughout the Midwest and Canada, Heckaman Homes are sold only by independent builders and developers. This partnership with our Builder Representatives is dedicated to providing quality housing to today's discerning homeowner.



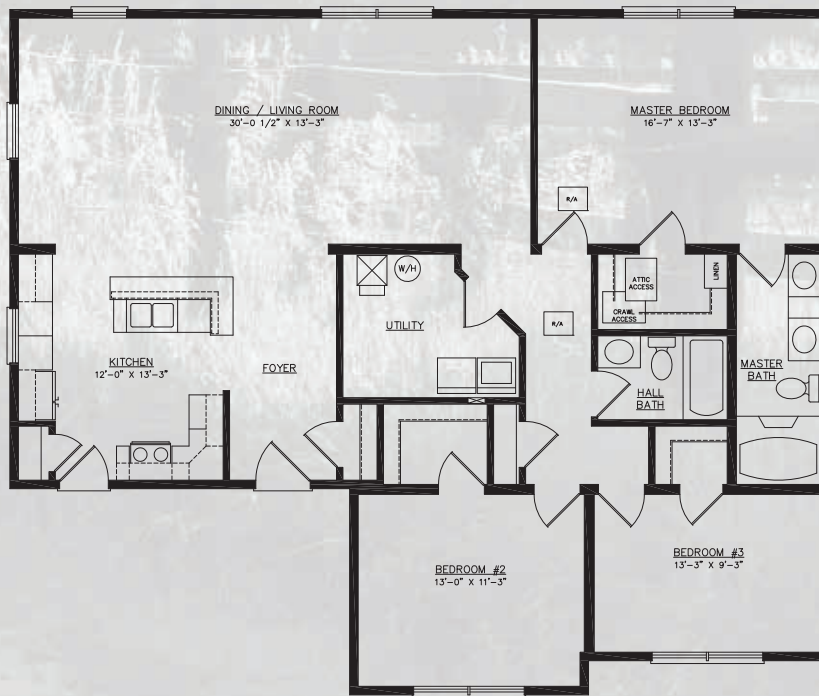
OUR MISSION STATEMENT

It is our commitment that by utilizing the advantages and benefits of systems built construction, we build with pride and in a professional, craftsmanlike manner, a superior home of the highest quality; that we respect the value and loyalty of our employees, our builders, and our customers; and that we maintain our reputation of excellence through the experience, integrity, strength, and stability that we have earned in the systems built construction industry.

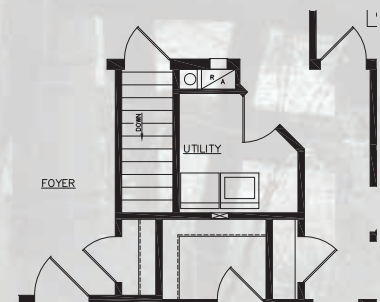


SQ. FT.	1,652
DIMENSIONS	48 x 40
BEDROOMS	3
BATHS	2

Bridgeport



CRAWLSPACE PLAN



BASEMENT PLAN

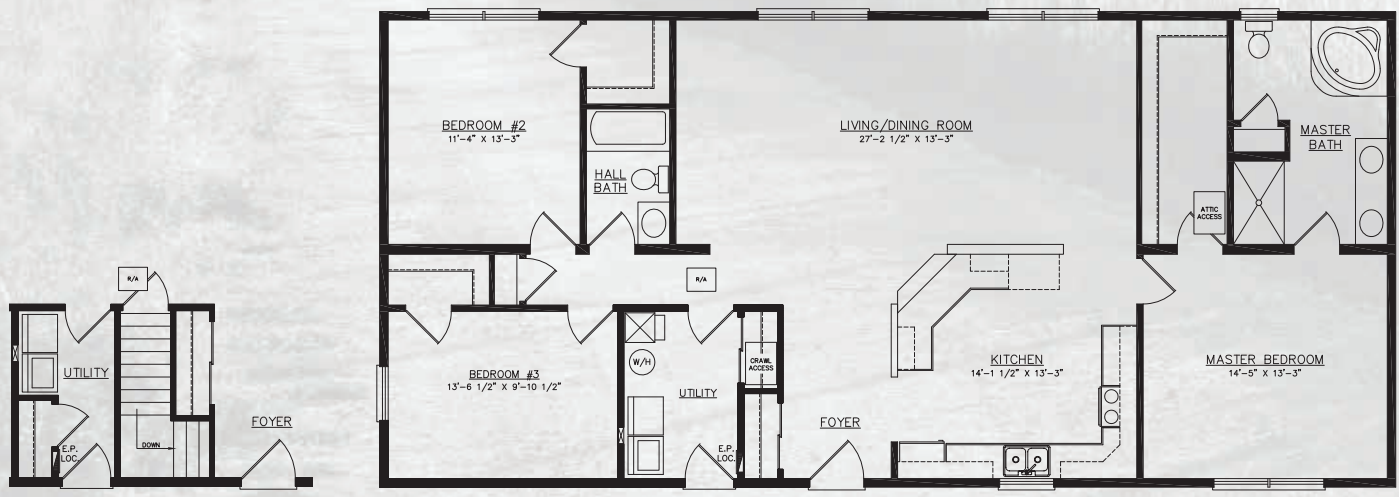
Renderings are artists interpretations only. Illustrations may show garages, porches and other options that are not standard in the basic floor plan or are added on-site by builder.

Welcoming families home since 1969!



Bridgewood

SQ. FT.	1,680
DIMENSIONS	28 x 60
BEDROOMS	3
BATHS	2





SQ. FT.	1,624
DIMENSIONS	28 x 58
BEDROOMS	3
BATHS	2

Brookside



CRAWLSPACE PLAN



BASEMENT PLAN

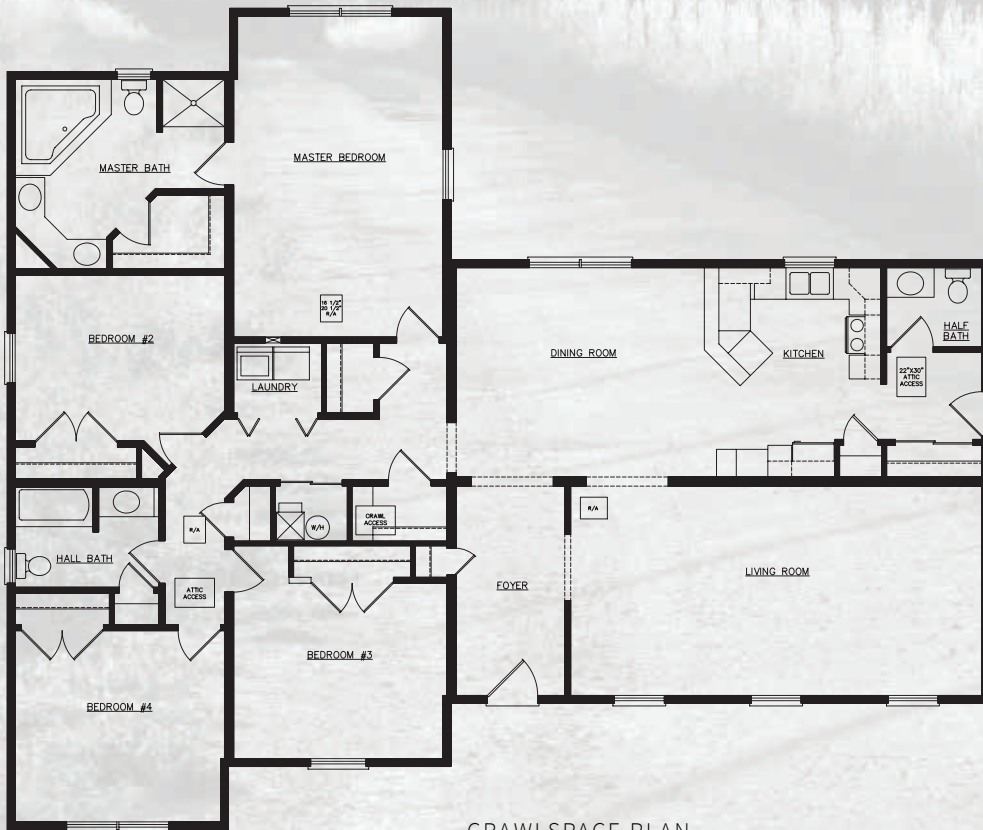
Renderings are artists interpretations only. Illustrations may show garages, porches and other options that are not standard in the basic floor plan or are added on-site by builder.

Welcoming families home since 1969!

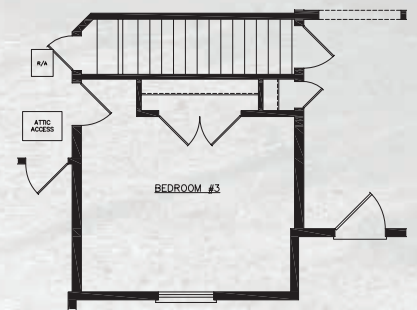


Claremont

SQ. FT.	2,296
DIMENSIONS	62 x 52
BEDROOMS	4
BATHS	2 1/2



CRAWLSPACE PLAN



BASEMENT PLAN



SQ. FT.	1,680
DIMENSIONS	28 x 60
BEDROOMS	3
BATHS	2

Countryside



CRAWLSPACE PLAN



BASEMENT PLAN

Renderings are artists interpretations only. Illustrations may show garages, porches and other options that are not standard in the basic floor plan or are added on-site by builder.

Welcoming families home since 1969!

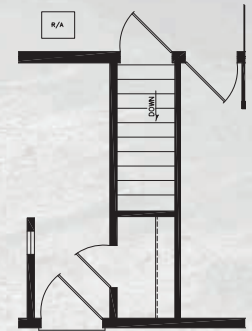


Crestridge

SQ. FT.	1,568
DIMENSIONS	28 x 56
BEDROOMS	3
BATHS	2



CRAWLSPACE PLAN

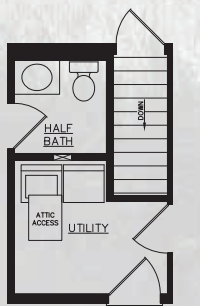


BASEMENT PLAN



SQ. FT.	1,652
DIMENSIONS	48 x 40
BEDROOMS	3
BATHS	2 1/2

Danbury



BASEMENT PLAN



CRAWLSPACE PLAN

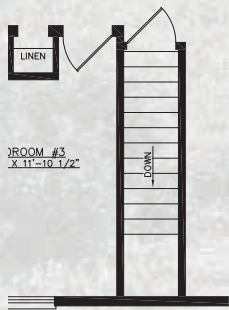
Renderings are artists interpretations only. Illustrations may show garages, porches and other options that are not standard in the basic floor plan or are added on-site by builder.

Welcoming families home since 1969!

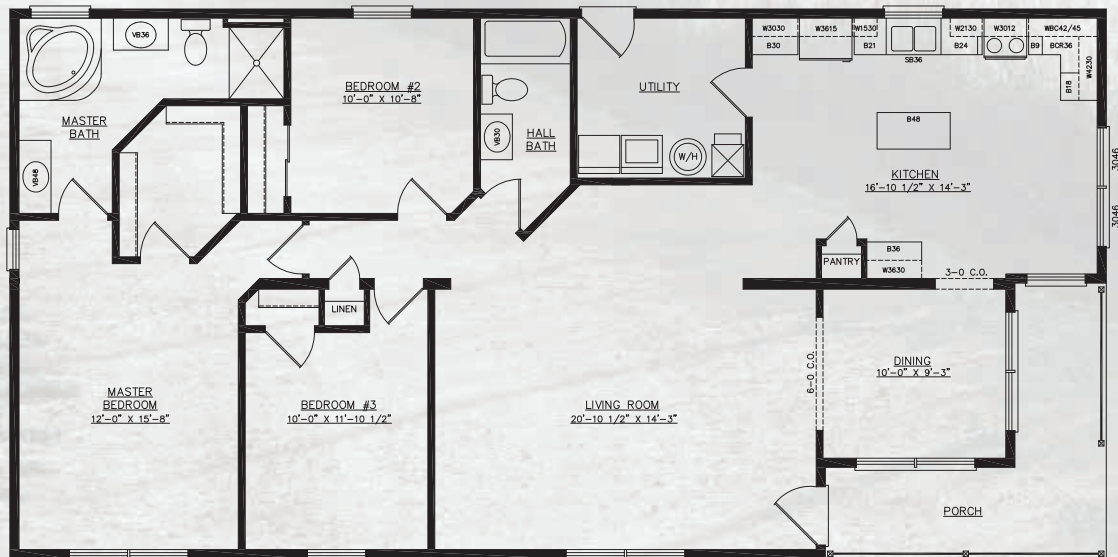


Georgia

SQ. FT.	1,800
DIMENSIONS	30 x 60
BEDROOMS	3
BATHS	2



BASEMENT PLAN

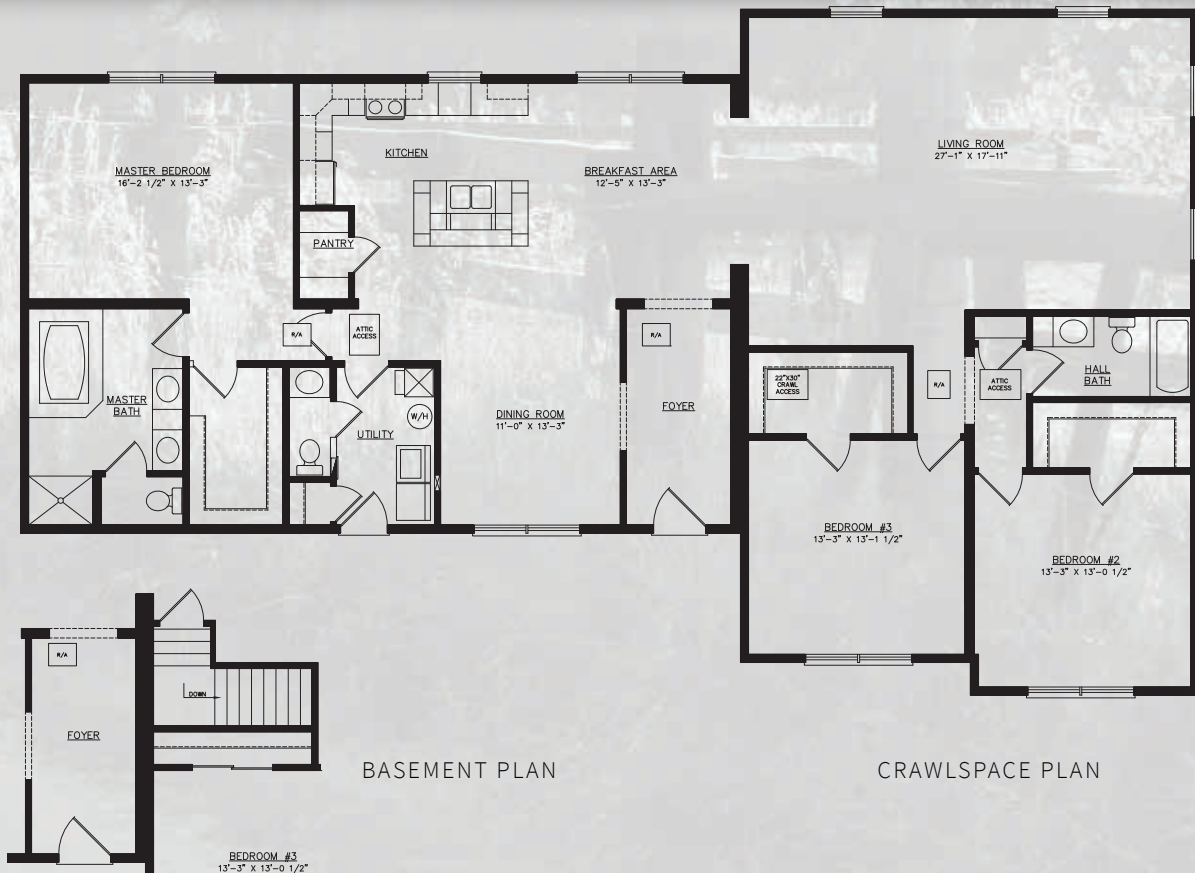


CRAWLSPACE PLAN



SQ. FT.	2,380
DIMENSIONS	72 x 42
BEDROOMS	3
BATHS	2 1/2

Hawthorn



Renderings are artists interpretations only. Illustrations may show garages, porches and other options that are not standard in the basic floor plan or are added on-site by builder.

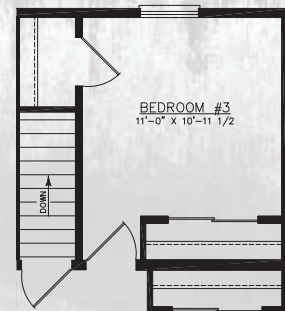
Welcoming families home since 1969!



Homestead

SQ. FT.	1,680
DIMENSIONS	28 x 60
BEDROOMS	3 or 4
BATHS	2

BASEMENT PLAN



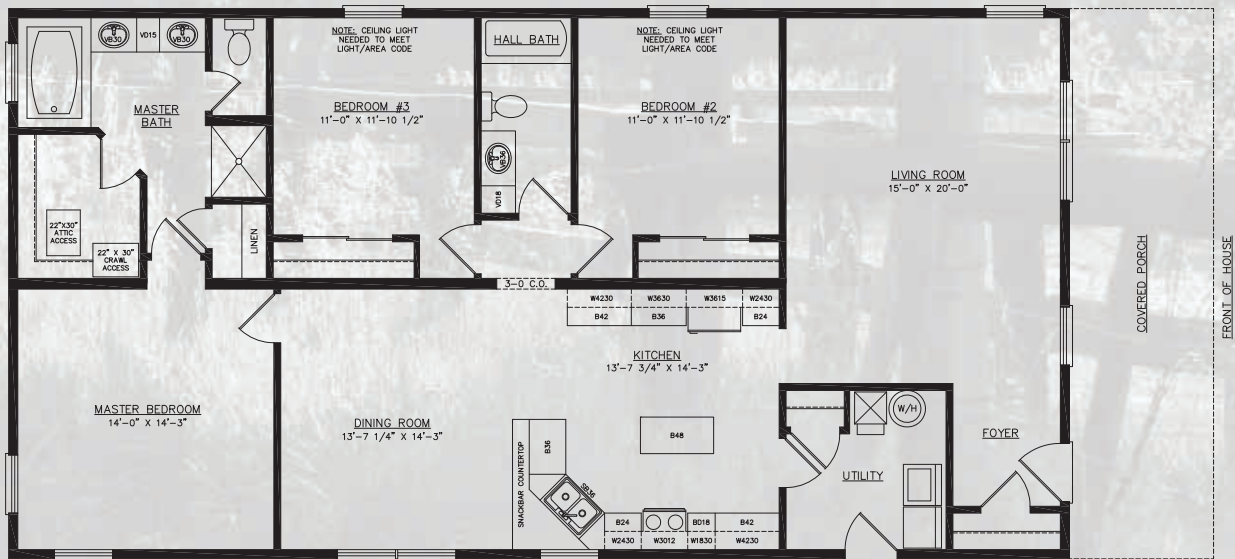
CRAWLSPACE PLAN





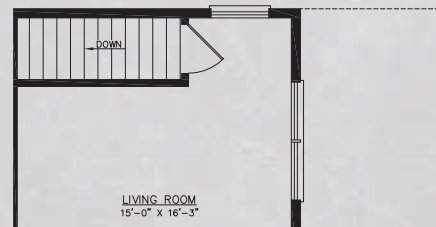
SQ. FT.	1,740
DIMENSIONS	30 x 58
BEDROOMS	3
BATHS	2

Kentucky



CRAWLSPACE PLAN

BASEMENT PLAN



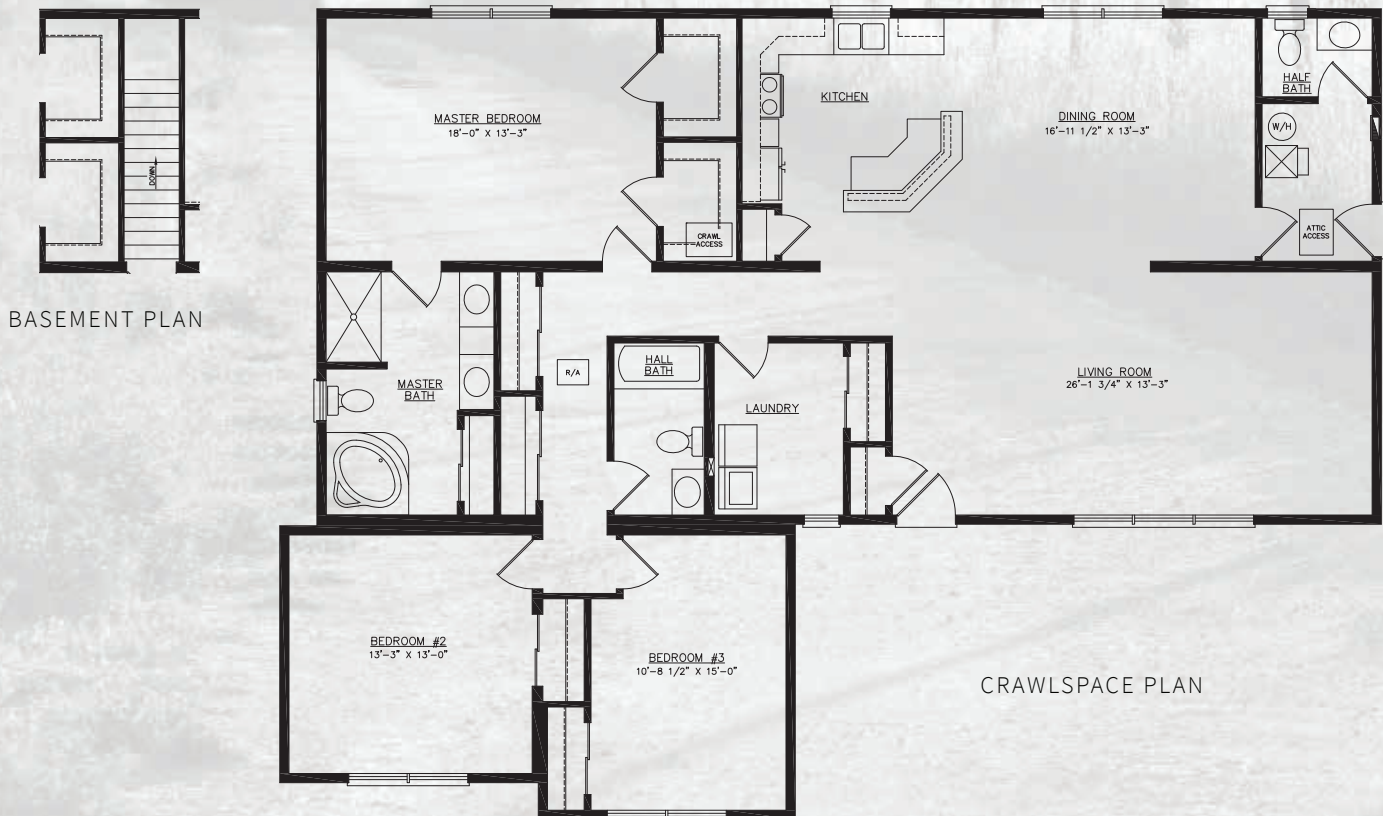
Renderings are artists interpretations only. Illustrations may show garages, porches and other options that are not standard in the basic floor plan or are added on-site by builder.

Welcoming families home since 1969!



Lancaster

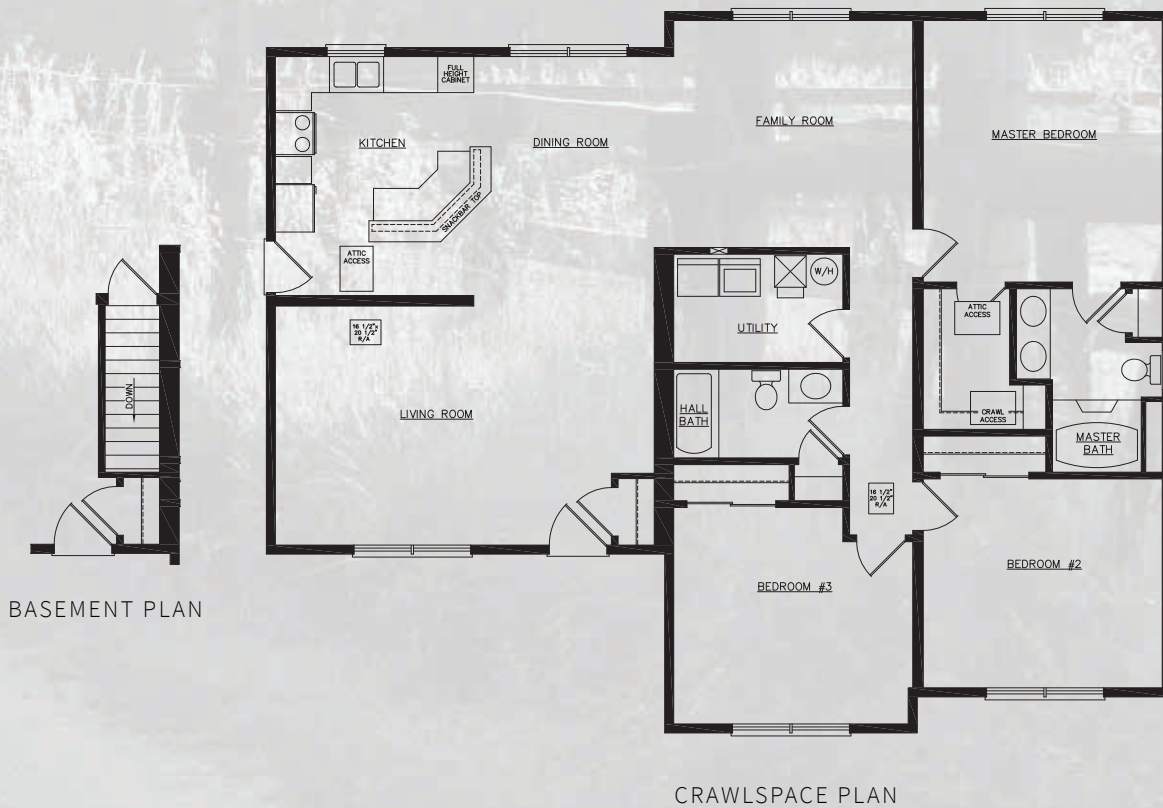
SQ. FT.	2,044
DIMENSIONS	58 x 44
BEDROOMS	3
BATHS	2 1/2





SQ. FT.	1,708
DIMENSIONS	50 x 40
BEDROOMS	3
BATHS	2

Montgomery

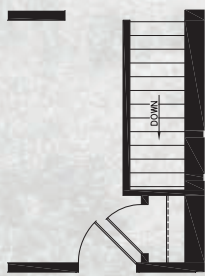


Renderings are artists interpretations only. Illustrations may show garages, porches and other options that are not standard in the basic floor plan or are added on-site by builder.



Oxford

SQ. FT.	1,680
DIMENSIONS	38 x 50
BEDROOMS	3
BATHS	2



BASEMENT PLAN



CRAWLSPACE PLAN

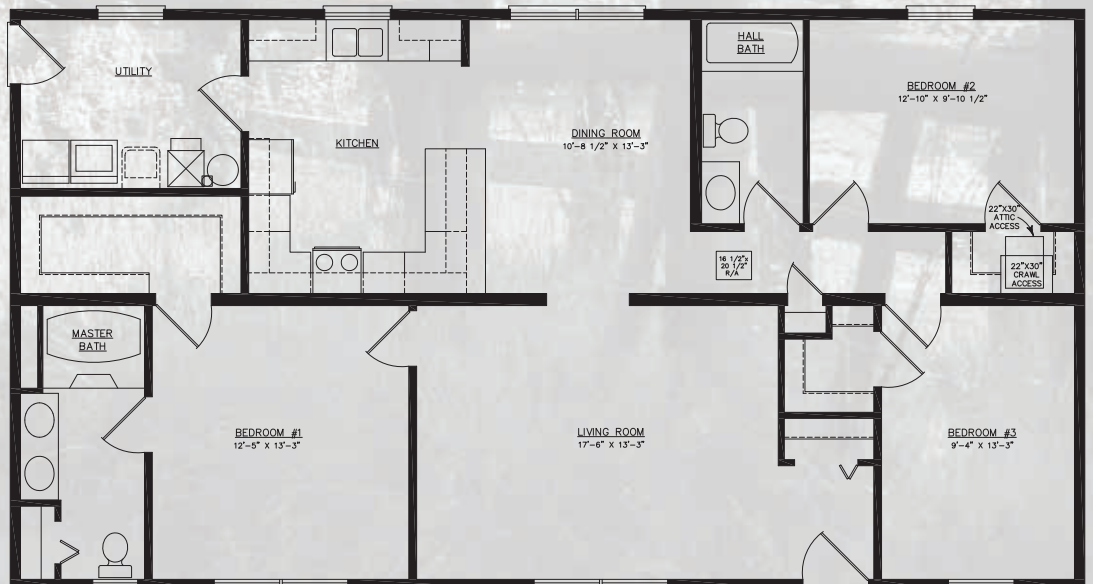


SQ. FT.	1,456
DIMENSIONS	28 x 52
BEDROOMS	3
BATHS	2

Somerset



BASEMENT PLAN



CRAWLSPACE PLAN

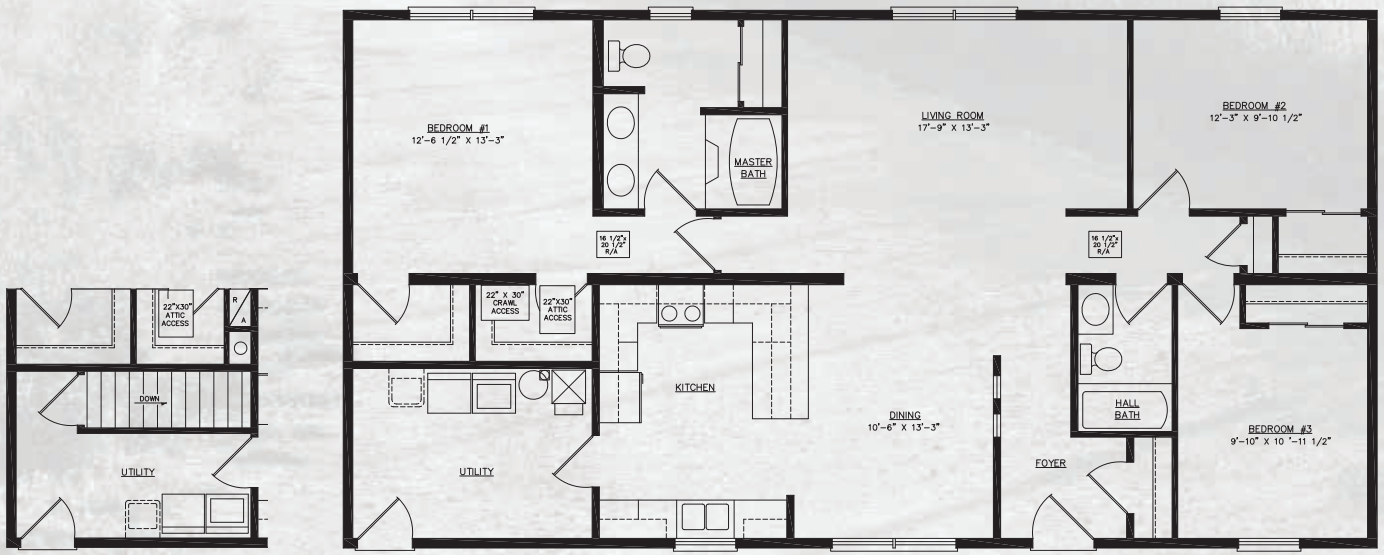
Renderings are artists interpretations only. Illustrations may show garages, porches and other options that are not standard in the basic floor plan or are added on-site by builder.

Welcoming families home since 1969!



Southwind

SQ. FT.	1,512
DIMENSIONS	28 x 54
BEDROOMS	3
BATHS	2



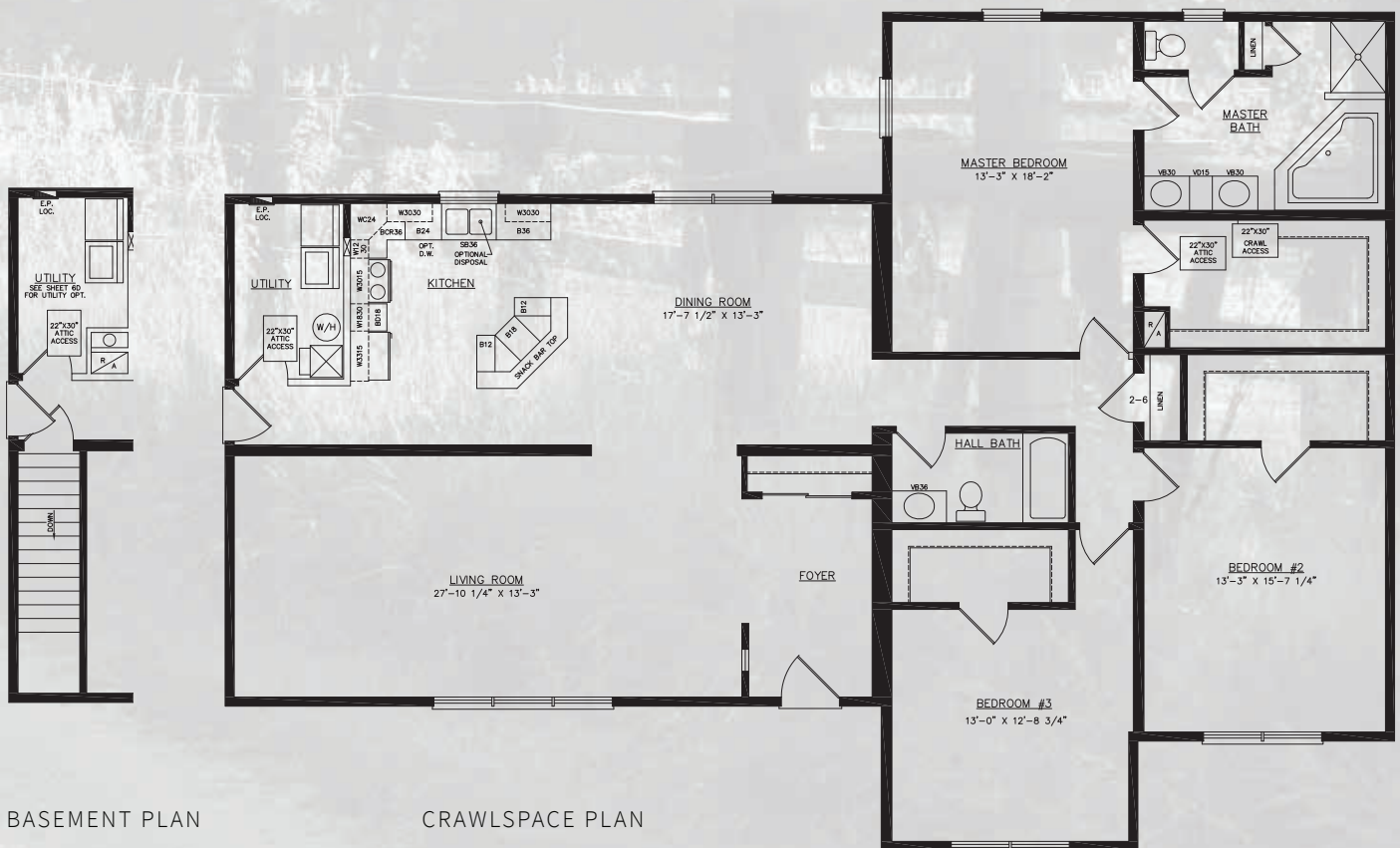
BASEMENT PLAN

CRAWLSPACE PLAN



SQ. FT.	2,212
DIMENSIONS	64 x 52
BEDROOMS	3 or 4
BATHS	2

Summit



BASEMENT PLAN

CRAWLSPACE PLAN

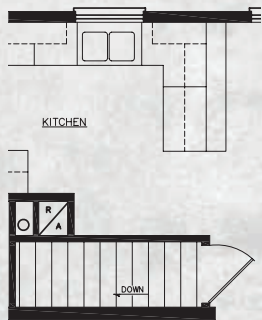
Renderings are artists interpretations only. Illustrations may show garages, porches and other options that are not standard in the basic floor plan or are added on-site by builder.

Welcoming families home since 1969!

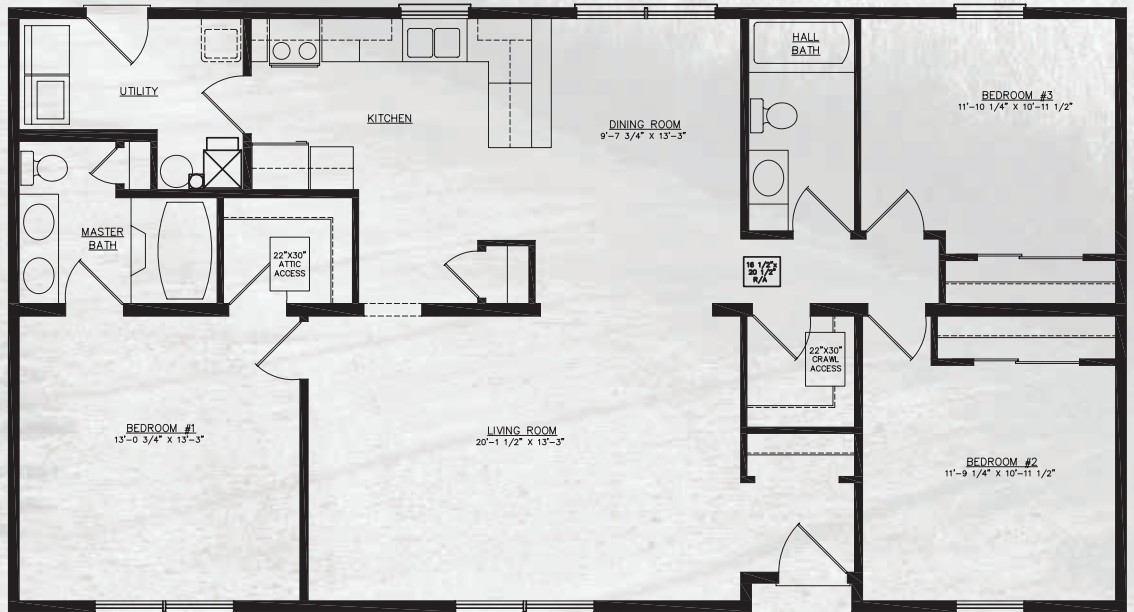


Sunnybrook

SQ. FT.	1,456
DIMENSIONS	28 x 52
BEDROOMS	3
BATHS	2



BASEMENT PLAN

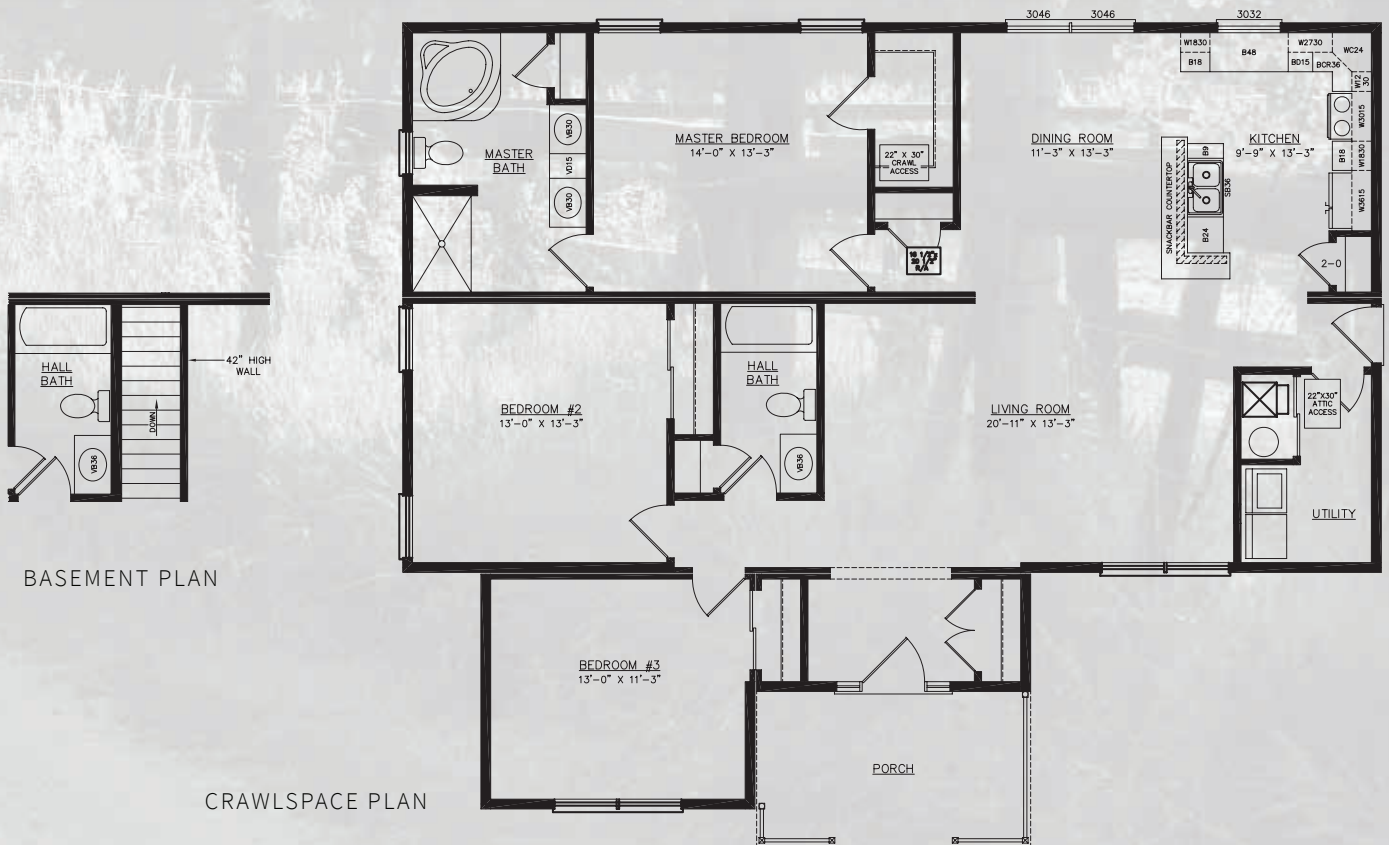


CRAWLSPACE PLAN



SQ. FT.	1,652
DIMENSIONS	50 x 42
BEDROOMS	3
BATHS	2

Westwood



Renderings are artists interpretations only. Illustrations may show garages, porches and other options that are not standard in the basic floor plan or are added on-site by builder.

Welcoming families home since 1969!

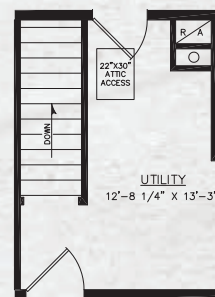


Willowbrook

SQ. FT.	1,568
DIMENSIONS	28 x 56
BEDROOMS	3
BATHS	2



CRAWLSPACE PLAN

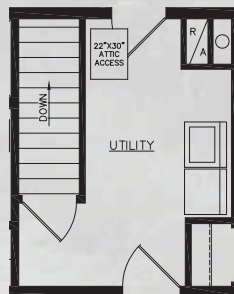


BASEMENT PLAN



SQ. FT. UPPER	1,736
DIMENSIONS	28 x 62
BEDROOMS	3
BATHS	2

Winchester



CRAWLSPACE PLAN

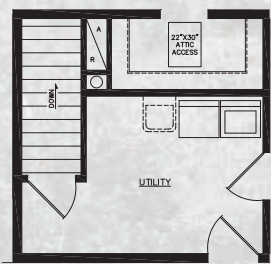
BASEMENT PLAN

Renderings are artists interpretations only. Illustrations may show garages, porches and other options that are not standard in the basic floor plan or are added on-site by builder.

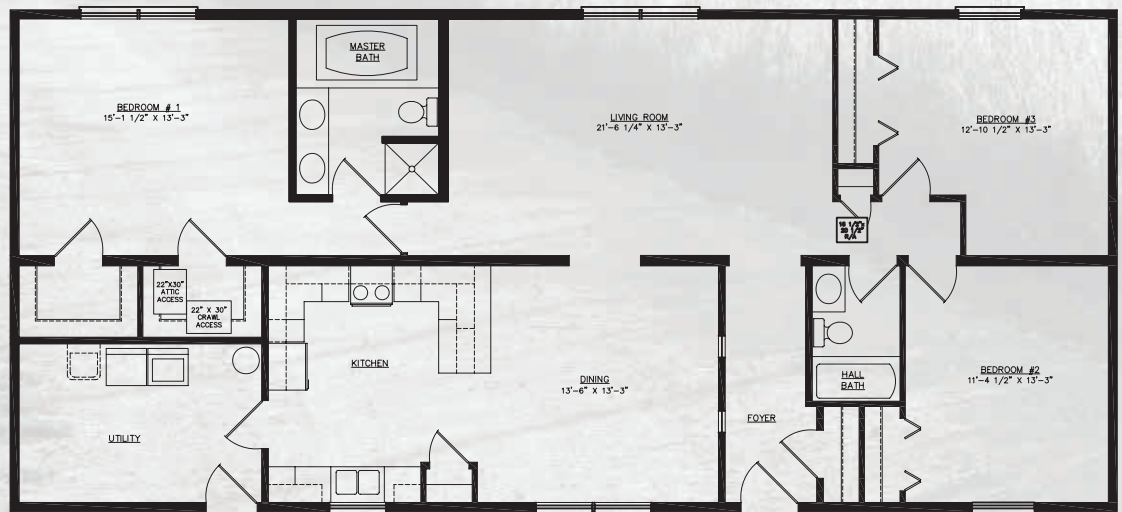


Woodbridge

SQ. FT.	1,736
DIMENSIONS	28 x 62
BEDROOMS	3
BATHS	2



BASEMENT PLAN



CRAWLSPACE PLAN



SQ. FT. UPPER	1,920
DIMENSIONS	30 x 64
BEDROOMS	3
BATHS	2

Wyoming



CRAWLSPACE PLAN

BASEMENT PLAN

Renderings are artists interpretations only. Illustrations may show garages, porches and other options that are not standard in the basic floor plan or are added on-site by builder.

Welcoming families home since 1969!



York

SQ. FT.	1,884
DIMENSIONS	41 x 58
BEDROOMS	3
BATHS	2

