

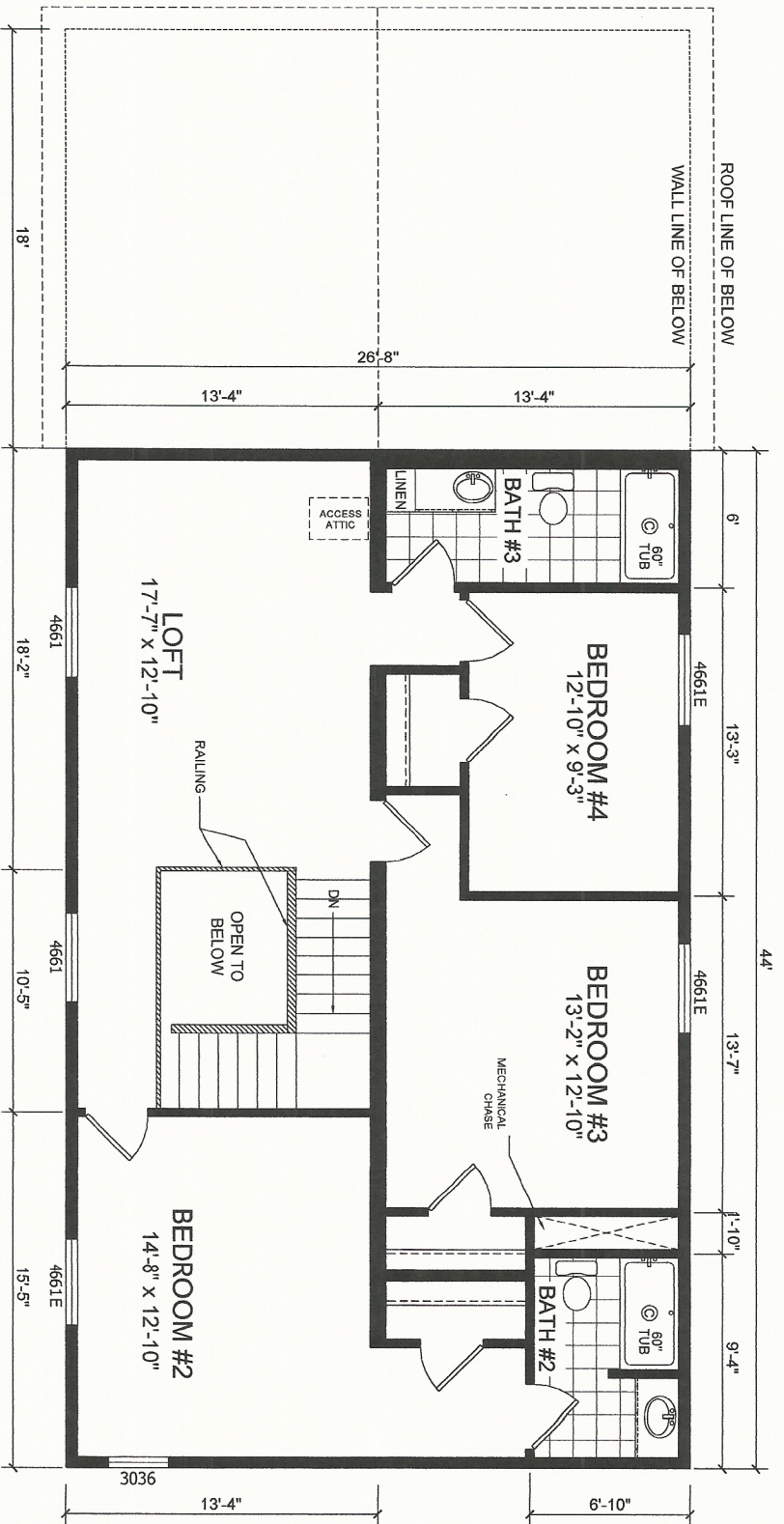
1ST FLOOR

28x62 2 STORY  
 1653 SQ. FT. LOWER LEVEL  
 2826 TOTAL SQ. FT.

\* FURNACE, WARM AIR DUCTS N/A WITH THIS MODEL.  
 ON-SITE BY OTHERS.  
 RETURN AIR GRILLS IN THE WALLS ARE STANDARD, DUCTED  
 TO FURNACE BELOW FLOOR ON-SITE BY OTHERS.

\* DESIGNATES FIELD WORK

<b>CHAMPION</b>		APPROVER'S SEAL	
308 SHERIDAN DRIVE TOPEKA, IN 46571		MODIFICATIONS	
PROPRIETARY AND CONFIDENTIAL <small>THESE DRAWINGS AND SPECIFICATIONS ARE ORIGINAL      PROPRIETARY AND CONFIDENTIAL MATERIALS OF CHAMPION.      COPYRIGHT © 1976-2008 BY CHAMPION</small>		MODEL: <b>RM 2006-M1-03</b> 2862 4BR 3 1/2BATH - 2 STORY	
DRAWN BY: JMD		DATE: 06-11-18	
SCALE: 1/8" = 1'-0"		PAGE: 14 of 19	
TITLE: <b>LITERATURE PLAN</b>		SHEET: <b>L-101</b>	



**2nd FLOOR**

\* FURNACE, WARM NA WITH THIS MODEL. ON-SITE BY OTHERS. CEILING RETURN AIR DUCTS ARE DUCTED TO CHASE, COMPLETED AND CONNECT TO FURNACE ON-SITE BY OTHERS.

\* DESIGNATES FIELD WORK

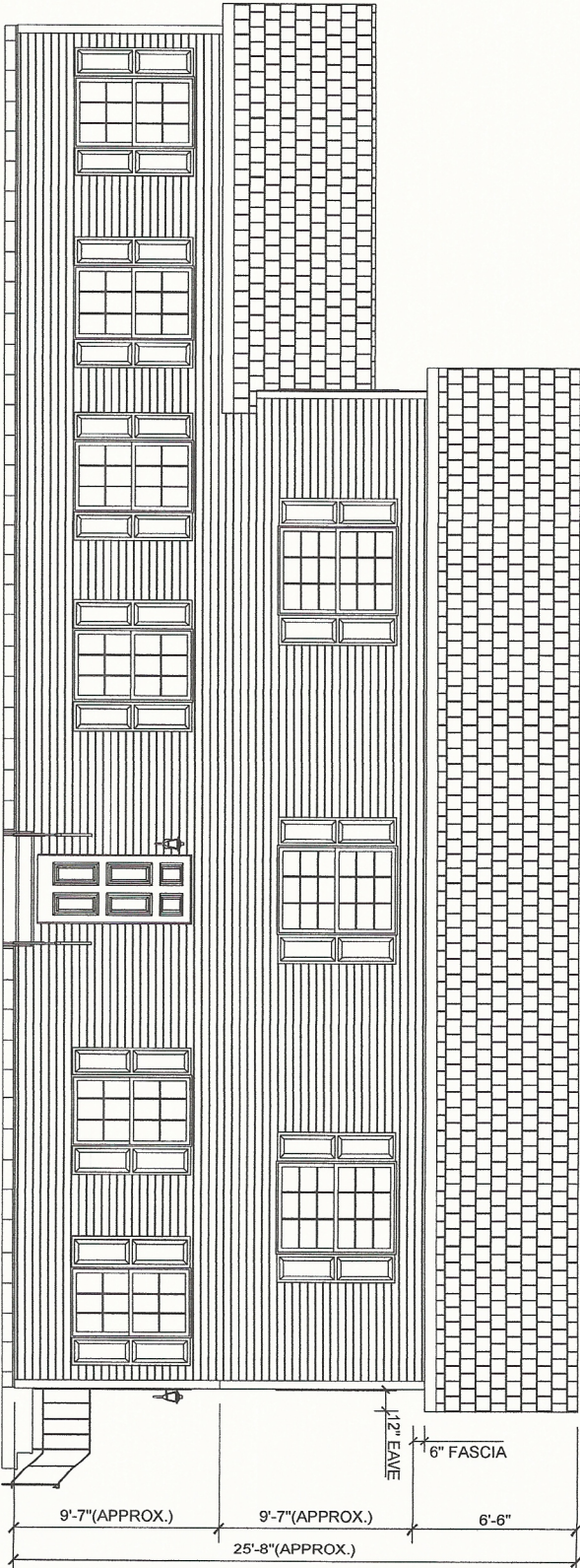
28x60 2 STORY  
 1173 SQ. FT. UPPER LEVEL  
 2826 TOTAL SQ. FT.



308 SHERIDAN DRIVE TOPEKA, IN 46571

APPROVERS SEAL		MODIFICATIONS	
MODEL: RM 2006-MI-03		SHEET: L-102	
TITLE: LITERATURE PLAN			
DRAWN BY: JMD		DATE: 06-11-18	
SCALE: 1/8" = 1'-0"		Page: 15 of 19	
PROPRIETARY AND CONFIDENTIAL THESE DRAWINGS AND SPECIFICATIONS ARE OF ORIGINAL PROPERTY OF CHAMPION COPYRIGHT © 1976-2008 BY CHAMPION			

- GENERAL NOTES:
1. VINYL SHUTTERS SHOWN ARE STANDARD FRONT SIDE ONLY.
  2. ALL WINDOWS SINGLE HUNG INSULATED LOW E.
  3. SIDING IS VINYL LAP FACTORY APPLIED OVER 3/8" MIN OSB SHEATHING AND POLYETHYLENE FABRIC. HOMEWRAP SHEATHING PAPER. (PRIMEWRAP OR EQUAL) INSTALLED TO THE MANUFACTURERS INSTALLATION INSTRUCTIONS. (SIDING FOR ENDS IS SHIPPED LOOSE FOR FIELD INSTALLATION BY OTHERS.)
  4. PERIMETER ROOF OVERHANG IS 12" OF PERFORATED METAL OR VINYL SOFFIT WITH VENTILATION TO THE ATTIC SPACE.
  5. SOME STANDARD AND OPTIONAL FEATURES ARE SHOWN.
  6. ALL GUTTERS, DOWN SPOUTS, STEPS AND HANDRAILS BY OWNER.
  7. FOUNDATION WINDOWS AND/OR VENTS NOT SHOWN.
  8. THIS HOME HAS ATTIC VENTILATION OF NOT LESS THAN 1/150th OF THE ATTIC AREA.
  9. OWNER SHOULD GIVE CONSIDERATION TO WINDOW AND DOOR LOCATIONS WHEN PLANNING FOR A SITE BUILT GARAGE.



FRONT ELEVATION

**CHAMPION**

308 SHERIDAN DRIVE TOPEKA, IN 46571

APPROVERS SEAL

MODIFICATIONS

PROPRIETARY AND CONFIDENTIAL  
 THESE DRAWINGS AND SPECIFICATIONS ARE ORIGINAL,  
 PROPRIETARY AND CONFIDENTIAL, MATERIALS OF CHAMPION,  
 COPYRIGHT © 1978-2008 BY CHAMPION

MODEL: **RM 2006-MI-03**  
 2862 4BR 3 1/2BATH - 2 STORY

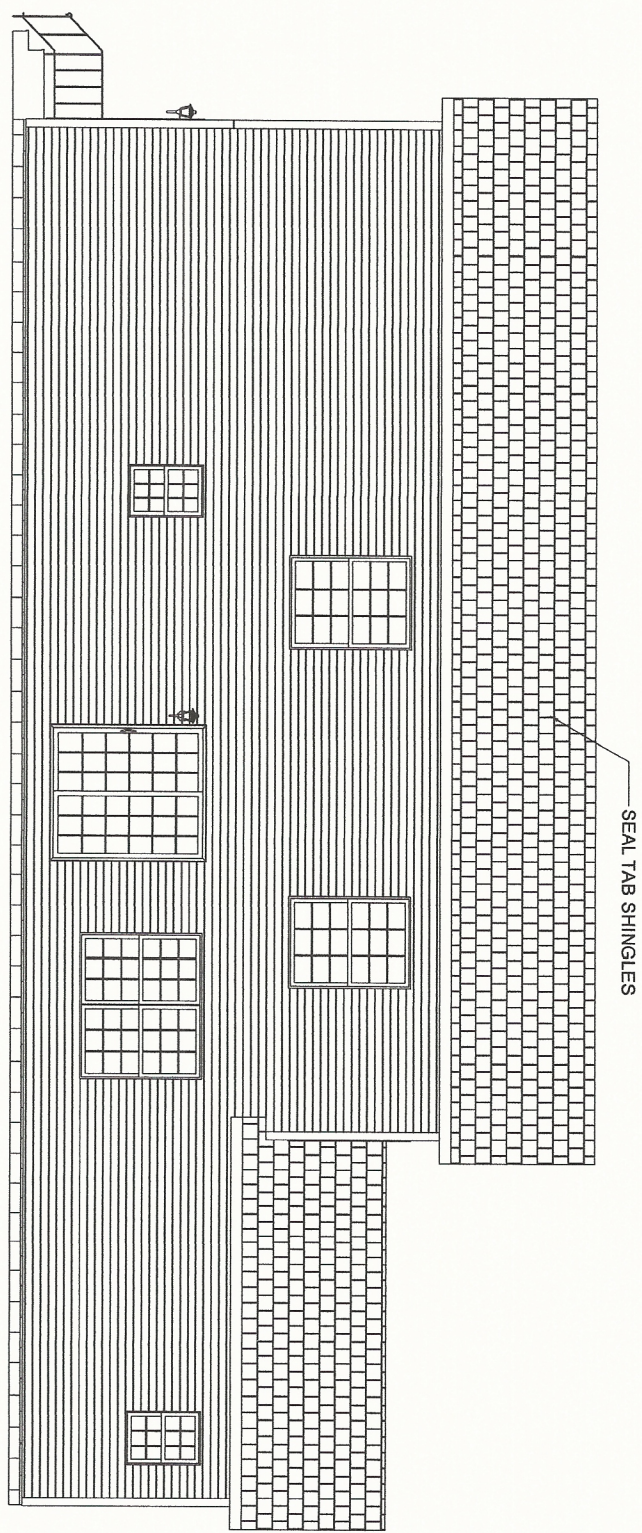
TITLE: **ELEVATION PLAN**

DRAWN BY: JMD DATE: 06-11-18  
 SCALE: 1/8" = 1'-0" Page: 10 of 19

SHEET:

**EV-101**

- GENERAL NOTES:
1. VINYL SHUTTERS SHOWN ARE STANDARD FRONT SIDE ONLY.
  2. ALL WINDOWS SINGLE HUNG INSULATED LOWE.
  3. SIDING IS VINYL LAP FACTORY APPLIED OVER 3/8" MIN OSB SHEATHING AND POLYETHYLENE FABRIC HOMEWRAP SHEATHING PAPER (PRIMEWRAP OR EQUAL) INSTALLED TO THE MANUFACTURERS INSTALLATION INSTRUCTIONS. (SIDING FOR ENDS IS SHIPPED LOOSE FOR FIELD INSTALLATION BY OTHERS.)
  4. PERIMETER ROOF OVERHANG IS 12" OF PERFORATED METAL OR VINYL SOFFIT WITH VENTILATION TO THE ATTIC SPACE.
  5. SOME STANDARD AND OPTIONAL FEATURES ARE SHOWN.
  6. ALL GUTTERS, DOWN SPOUTS, STEPS AND HANDRAILS BY OWNER.
  7. FOUNDATION WINDOWS AND/OR VENTS NOT SHOWN.
  8. THIS HOME HAS ATTIC VENTILATION OF NOT LESS THAN 1/150th OF THE ATTIC AREA.
  9. OWNER SHOULD GIVE CONSIDERATION TO WINDOW AND DOOR LOCATIONS WHEN PLANNING FOR A SITE BUILT GARAGE.



REAR ELEVATION



308 SHERIDAN DRIVE TOPEKA, IN 46571

APPROVERS SEAL

MODIFICATIONS

MODEL: RM 2006-MI-03  
2862 4BR 3 1/2BATH - 2 STORY

SHEET:

TITLE:  
ELEVATION PLAN

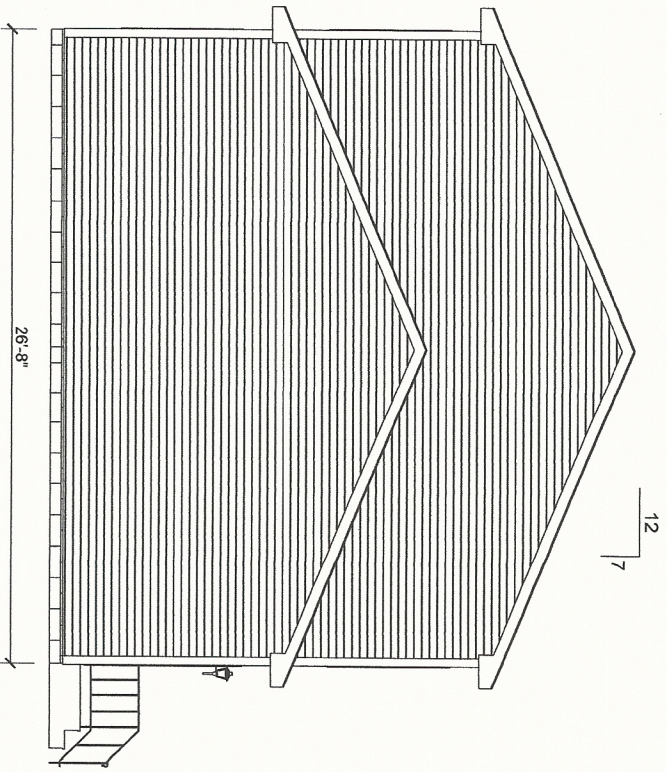
EV-102

PROPRIETARY AND CONFIDENTIAL  
THESE DRAWINGS AND SPECIFICATIONS ARE ORIGINAL,  
PROPRIETARY AND CONFIDENTIAL MATERIALS OF CHAMPION.  
COPYRIGHT © 1979-2008 BY CHAMPION

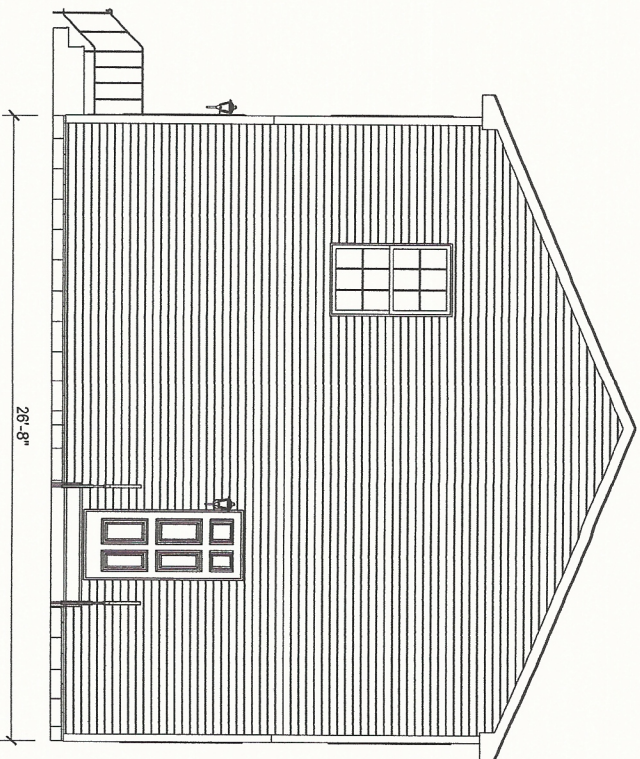
DRAWN BY: JMD  
SCALE: 1/8" = 1'-0"

DATE: 06-11-18  
Page: 11 of 19

- GENERAL NOTES:
1. VINYL SHUTTERS SHOWN ARE STANDARD FRONT SIDE ONLY.
  2. ALL WINDOWS SINGLE HUNG INSULATED LOW E.
  3. SIDING IS VINYL LAP FACTORY APPLIED OVER 3/8" MIN OSB SHEATHING AND POLYETHYLENE FABRIC HOMEWRAP SHEATHING PAPER (PRIMEWRAP OR EQUAL) INSTALLED TO THE MANUFACTURER'S INSTALLATION INSTRUCTIONS. (SIDING FOR ENDS IS SHIPPED LOOSE FOR FIELD INSTALLATION BY OTHERS.)
  4. PERIMETER ROOF OVERHANG IS 12" OF PERFORATED METAL OR VINYL SOFFIT WITH VENTILATION TO THE ATTIC SPACE.
  5. SOME STANDARD AND OPTIONAL FEATURES ARE SHOWN.
  6. ALL GUTTERS, DOWN SPOUTS, STEPS AND HANDRAILS BY OWNER.
  7. FOUNDATION WINDOWS AND/OR VENTS NOT SHOWN.
  8. THIS HOME HAS ATTIC VENTILATION OF NOT LESS THAN 1/150th OF THE ATTIC AREA.
  9. OWNER SHOULD GIVE CONSIDERATION TO WINDOW AND DOOR LOCATIONS WHEN PLANNING FOR A SITE BUILT GARAGE.
- \* DESIGNATES FIELD WORK



LEFT ELEVATION



RIGHT ELEVATION

APPROVER'S SEAL

MODIFICATIONS

MODEL: RM 2006-MI-03

SHEET:

2862 4BR 3 1/2BATH - 2 STORY

TITLE: ELEVATION PLAN

EV-103

DRAWN BY: JMD

DATE: 06-11-18

SCALE: 1/8" = 1'-0"

Page: 12 of 19

**CHAMPION**

308 SHERIDAN DRIVE TOPEKA, IN 46571

PROPRIETARY AND CONFIDENTIAL  
THESE DRAWINGS AND SPECIFICATIONS ARE ORIGINAL  
PROPRIETARY AND CONFIDENTIAL MATERIALS OF CHAMPION  
COPYRIGHT © 1976-2008 BY CHAMPION