

Select Modular

creative. flexible. innovative.

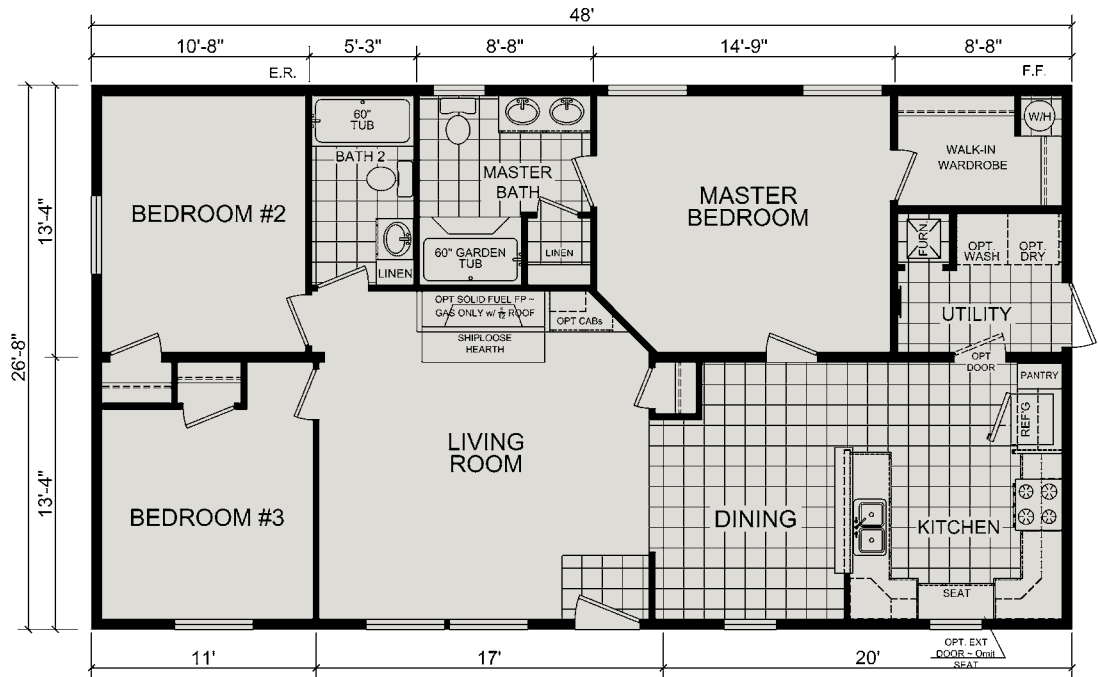




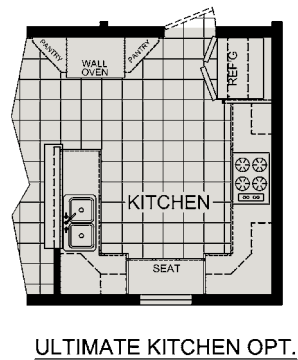
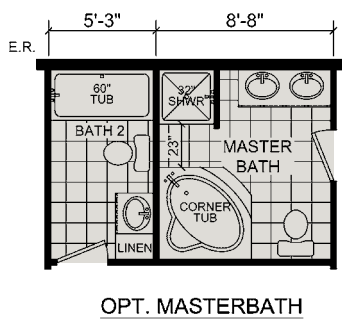
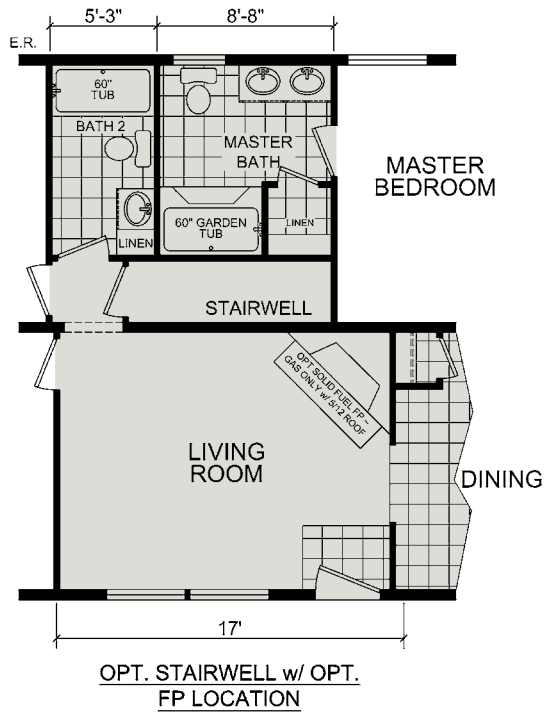
Troy

HS 48301

3 BR | 2 Bath | 1280 Sq. Ft.



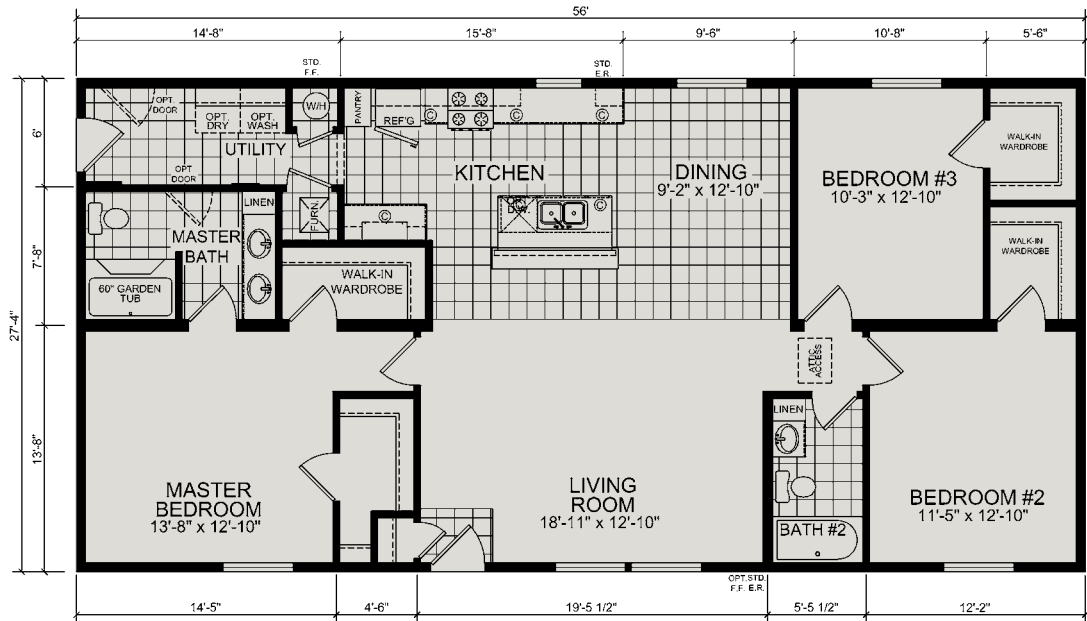
This floor plan may vary, pending modular approval.

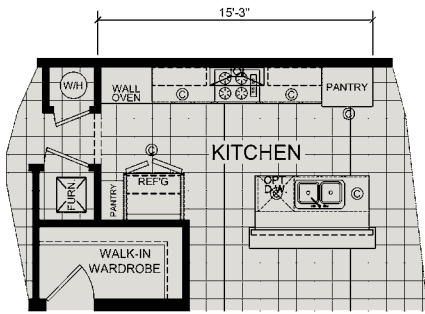




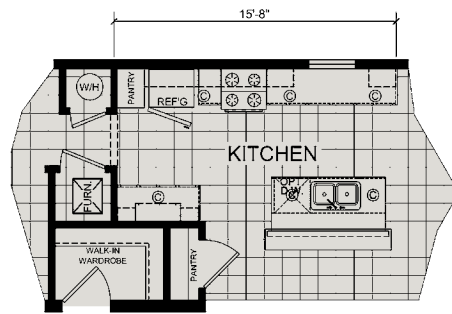
Fraser HS 56301

3 BR | 2 Bath | 1530 Sq. Ft.

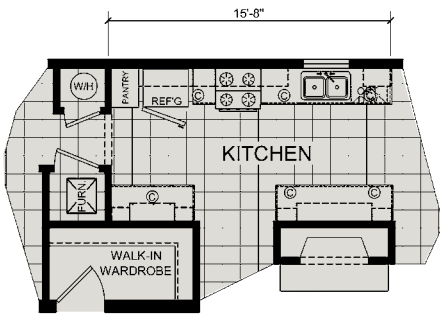




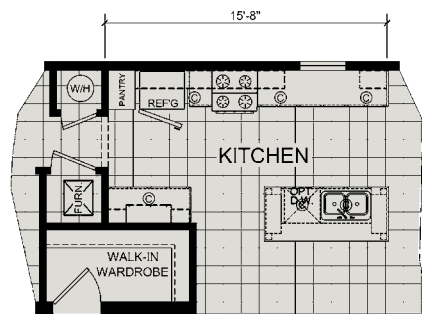
OPTIONAL ULTIMATE KITCHEN



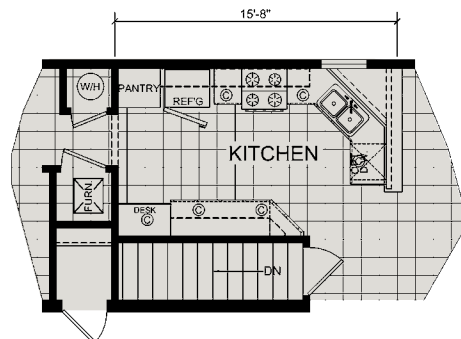
OPTIONAL PANTRY



OPTIONAL FIREPLACE



OPTIONAL ISLAND

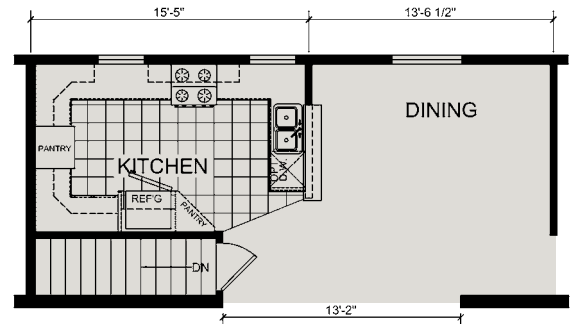
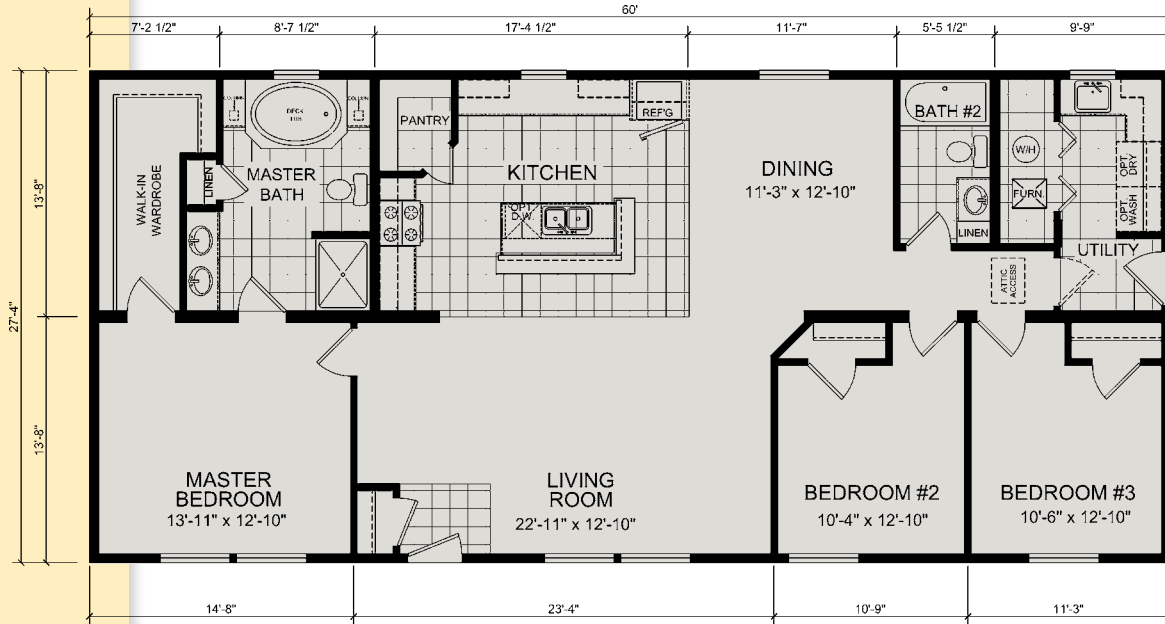


OPTIONAL BASEMENT

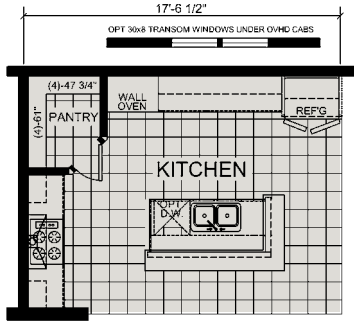


Canton HS 60303

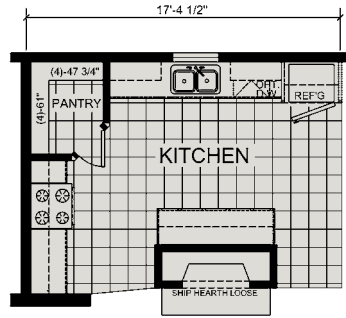
3 BR | 2 Bath | 1640 Sq. Ft.



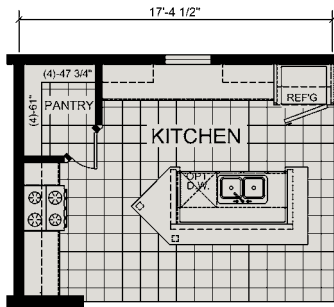
OPTIONAL BASEMENT



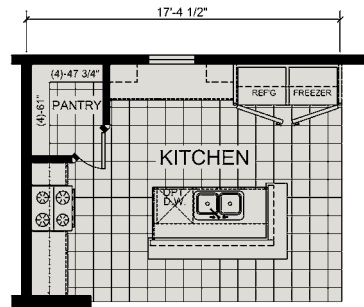
OPTIONAL ULTIMATE KITCHEN



OPTIONAL FIREPLACE



OPTIONAL ISLAND

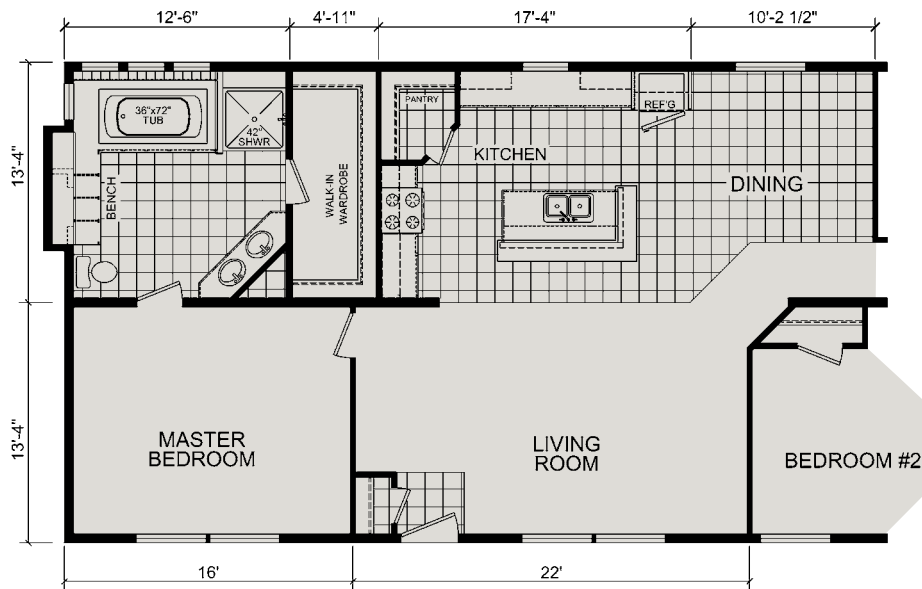
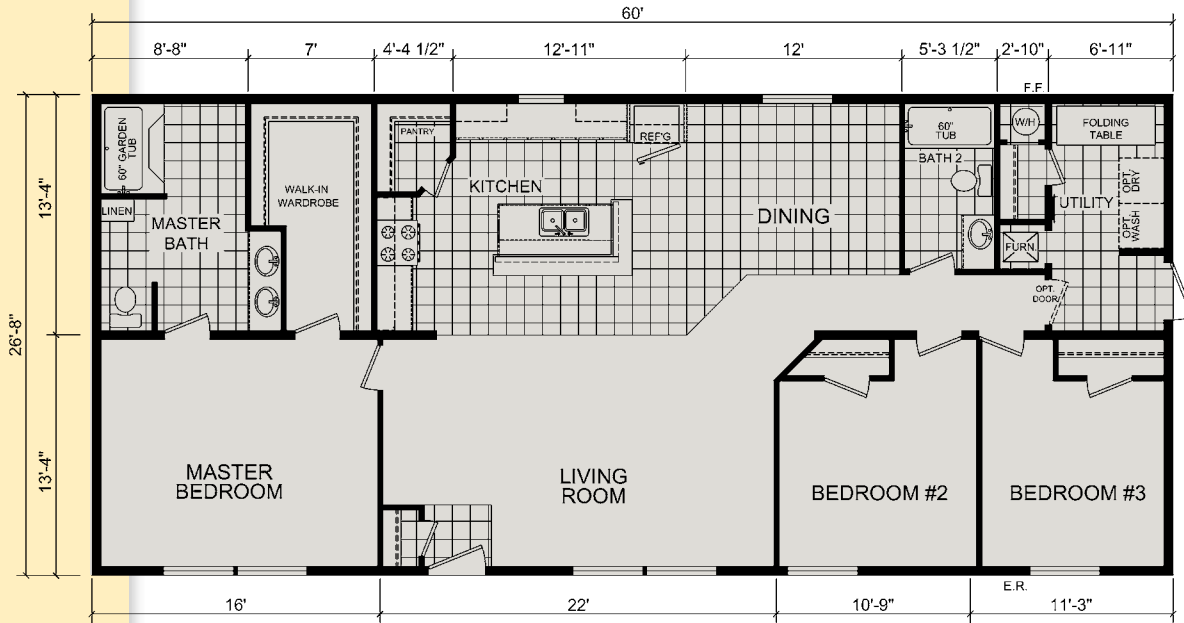


OPTIONAL REFER/FREEZER KITCHEN



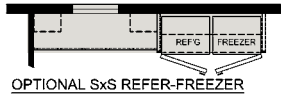
Tyler LS 60301

3 BR | 2 Bath | 1600 Sq. Ft.

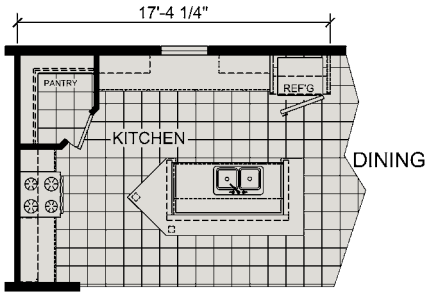


**OPTIONAL SUITE RETREAT
REDUCE DININGROOM BY 20"**

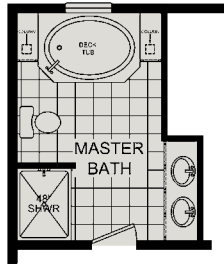
This floor plan may vary, pending modular approval.



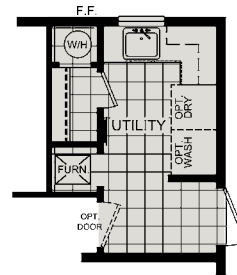
OPTIONAL 5x5 REFER-FREEZER



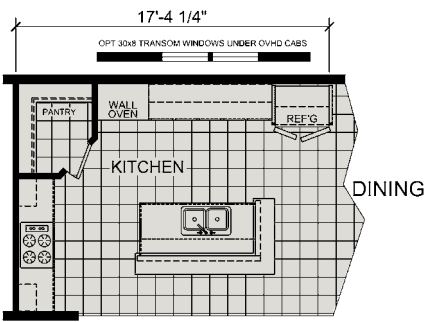
OPTIONAL ISLAND



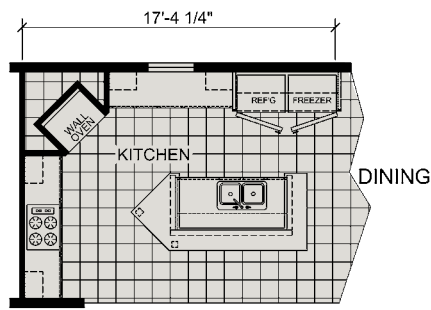
OPT. MASTER BATH



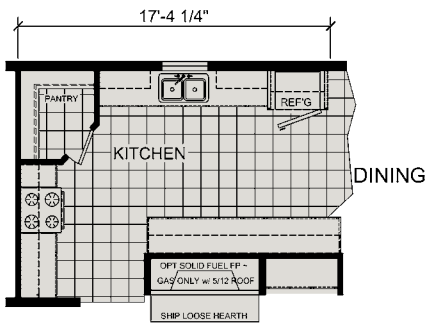
OPT. UTILITY ROOM



OPTIONAL ULTIMATE KITCHEN #1



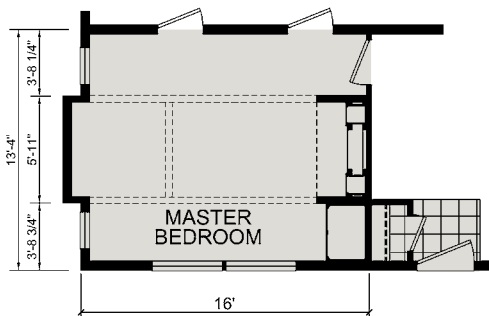
OPTIONAL ULTIMATE KITCHEN #2



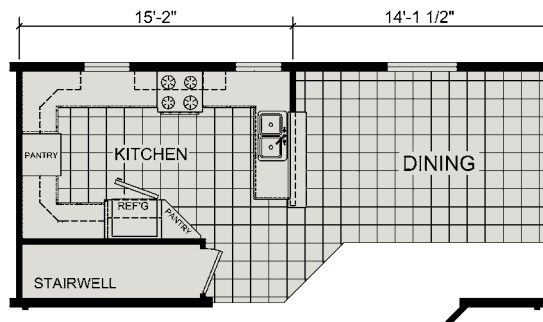
OPTIONAL FIREPLACE #1



OPTIONAL FIREPLACE #2



OPTIONAL SUITE ESCAPE

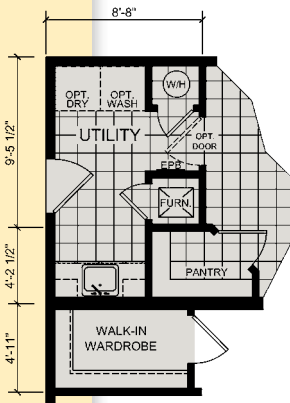
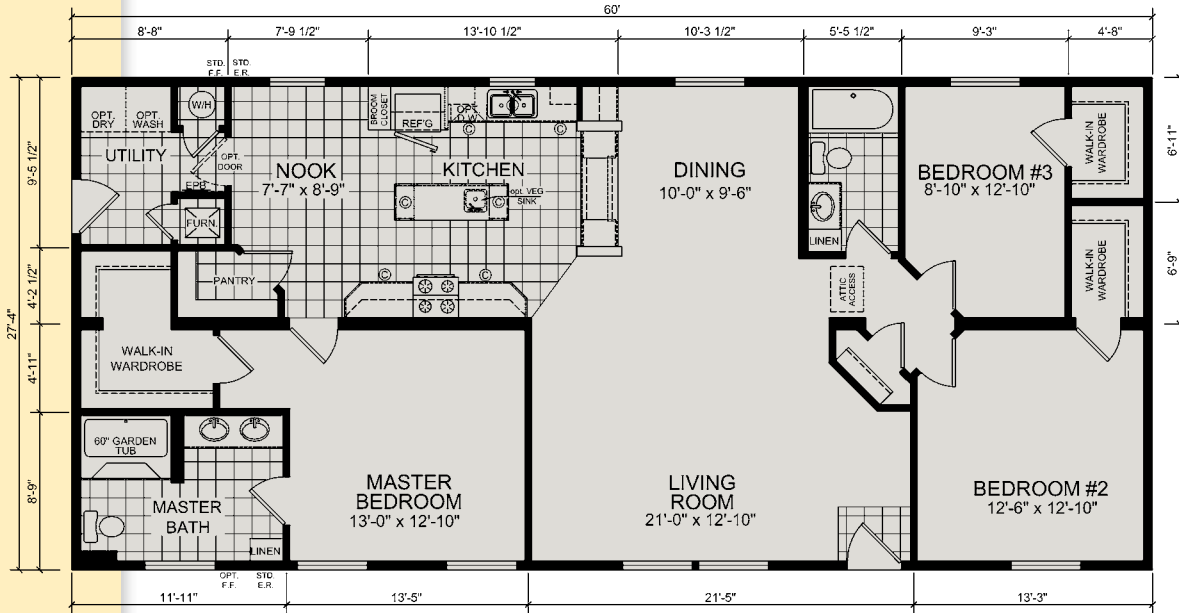


OPTIONAL STAIRWELL

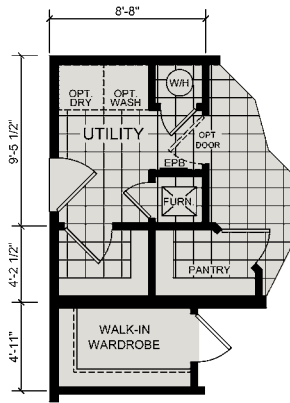


Taylor
LS 60303

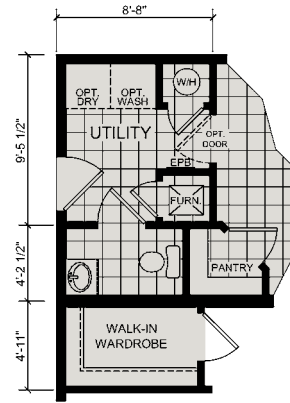
3 BR | 2 Bath | 1640 Sq. Ft.



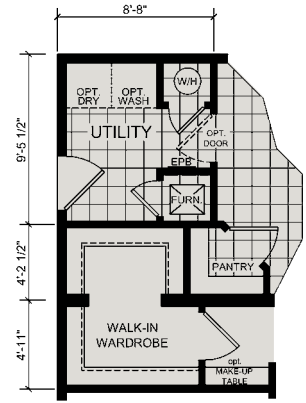
OPTIONAL UTILITY ROOM
SINK



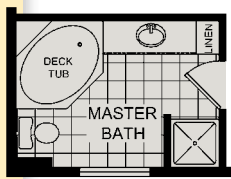
OPTIONAL UTILITY ROOM
STORAGE



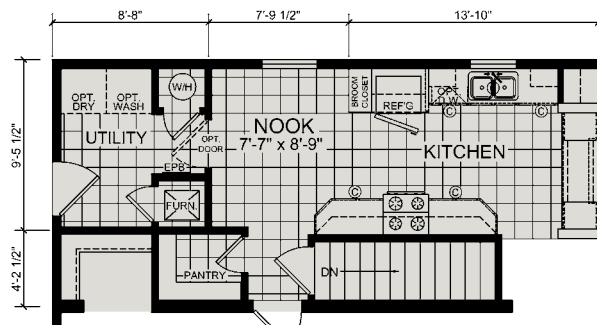
OPTIONAL HALF BATH



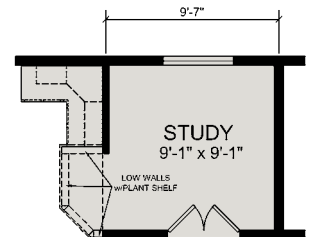
OPTIONAL
MASTER BED CLOSET
& MAKE-UP TABLE



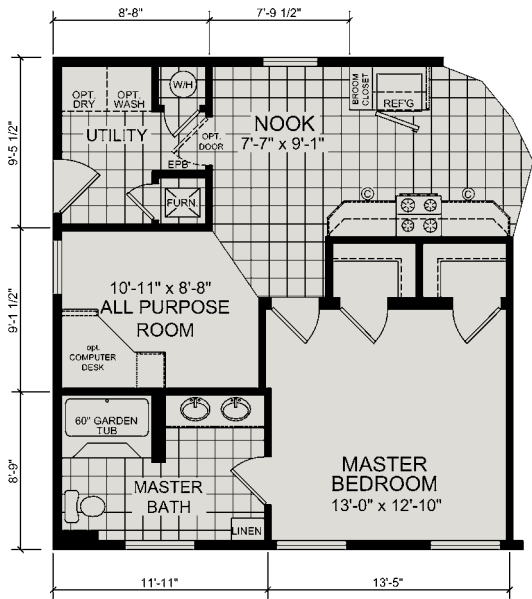
OPTIONAL MASTER BATH #1



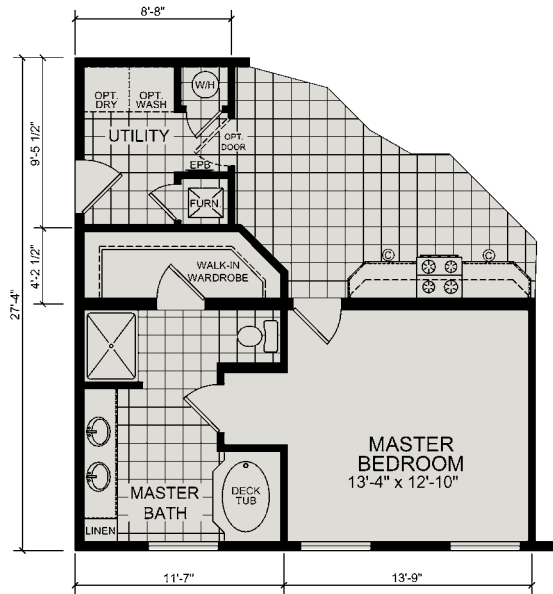
OPTIONAL STAIRWELL #1
(SHOWN WITH STANDARD KITCHEN)



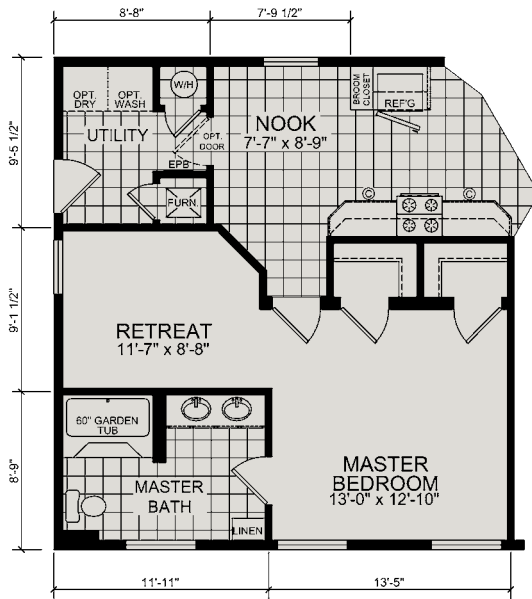
OPTIONAL STUDY



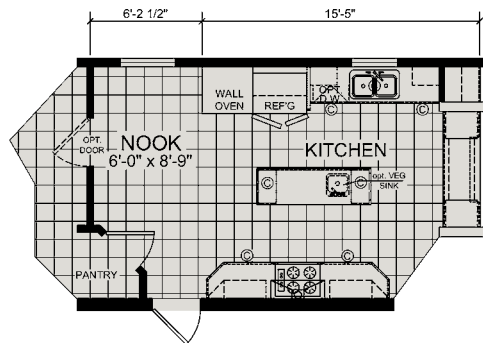
OPTIONAL ALL PURPOSE ROOM
(N/A WITH OPTIONAL KITCHEN & STAIRWELL)



OPTIONAL MASTER BATH #2



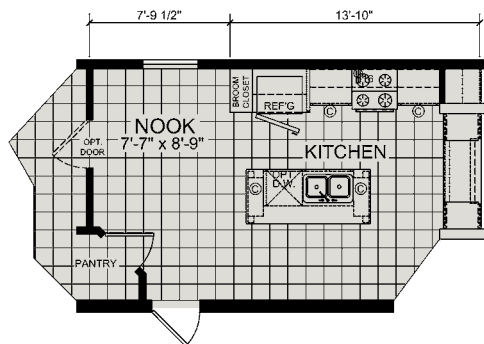
OPTIONAL MASTER BED RETREAT
(N/A WITH OPTIONAL KITCHEN & STAIRWELL)



OPTIONAL ULTIMATE KITCHEN



OPTIONAL FIREPLACE
(WOOD BURNING N/A ALL STATES)



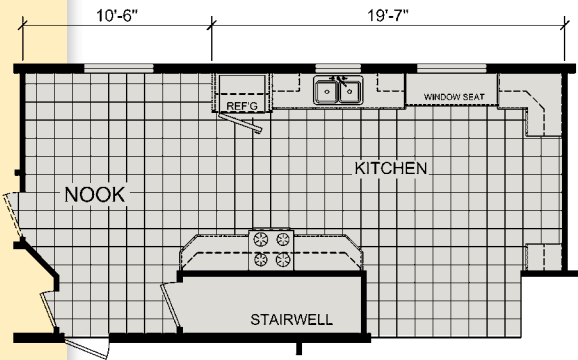
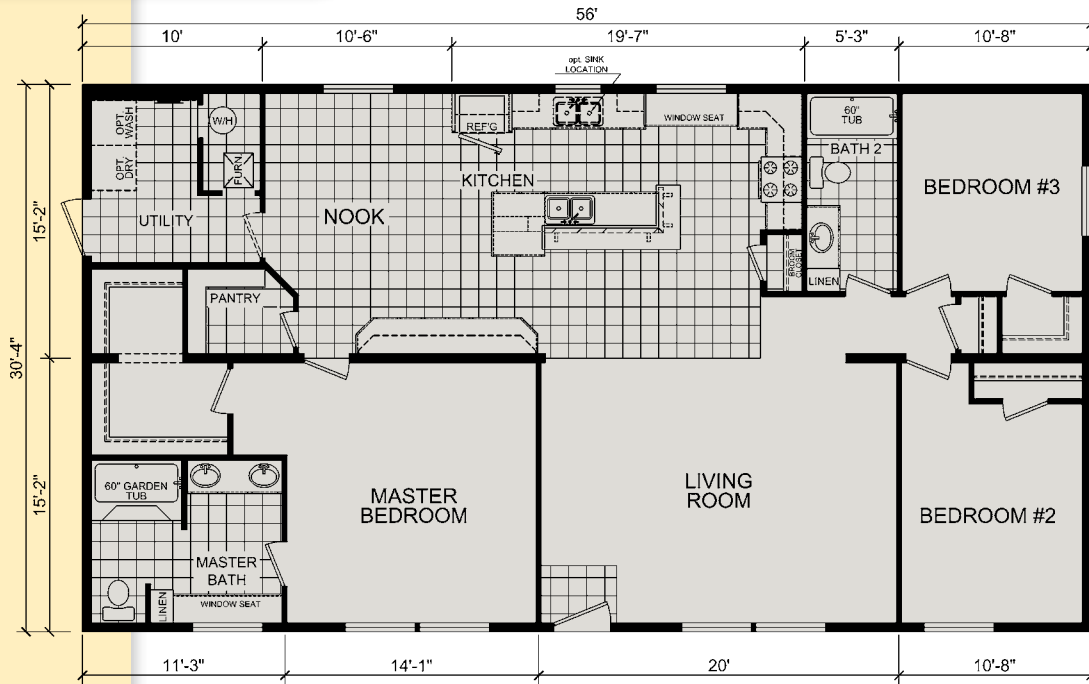
OPTIONAL KITCHEN
(N/A WITH STAIRWELL)



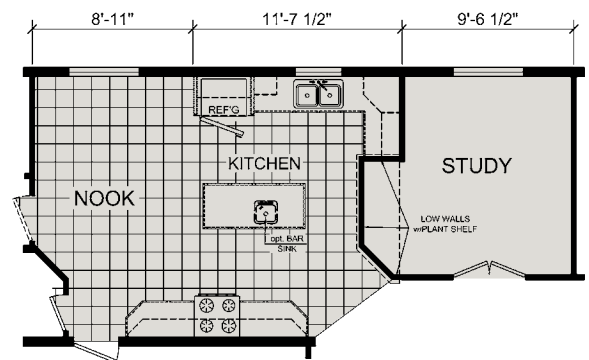
Roosevelt

LS 56301

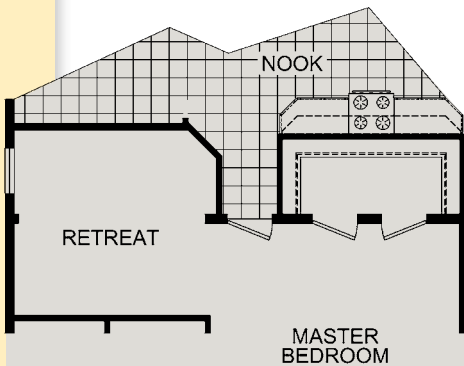
3 BR | 2 Bath | 1699 Sq. Ft.



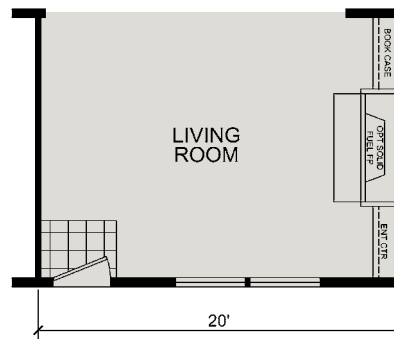
OPTIONAL STAIRWELL



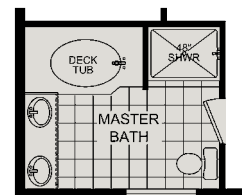
OPTIONAL STUDY



MASTERBED w/RETREAT OPTION

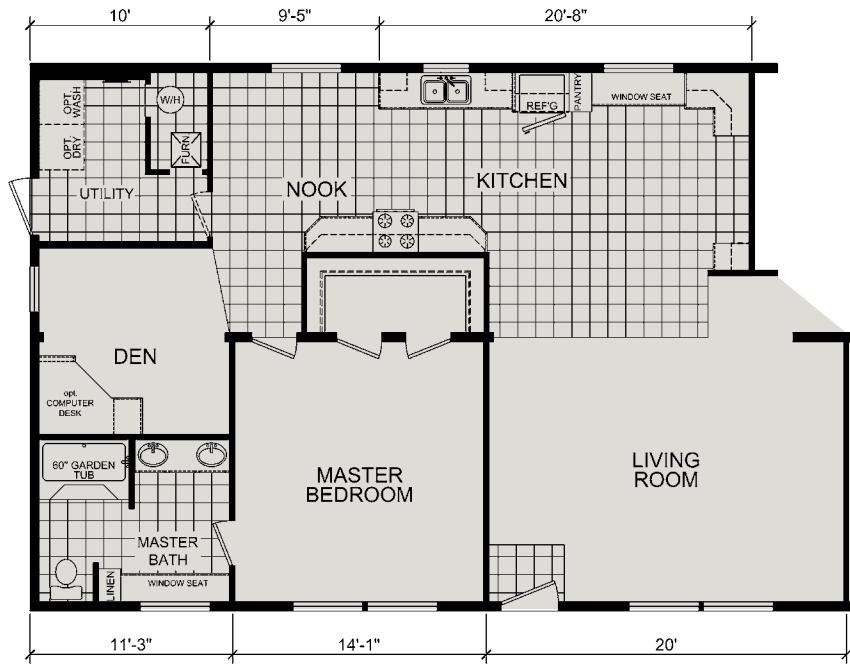


FIREPLACE OPTION

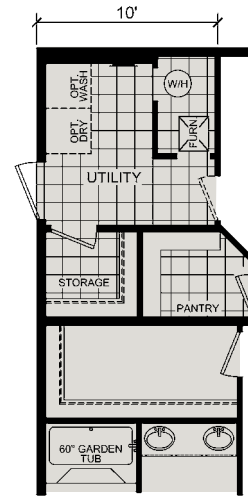


OPTIONAL MASTERBATH

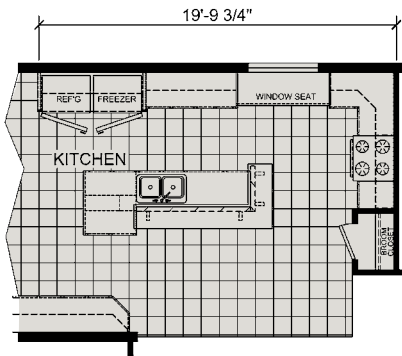
This floor plan may vary, pending modular approval.



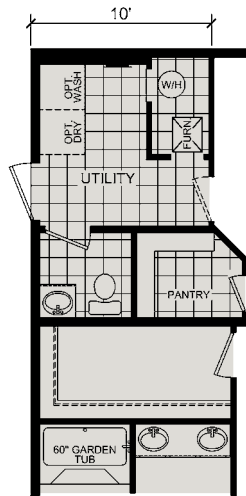
OPTIONAL DEN with OPTIONAL KITCHEN



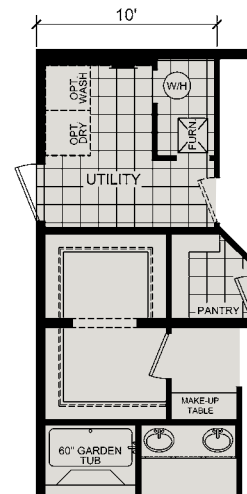
OPTIONAL STORAGE ROOM & MBED CLOSET



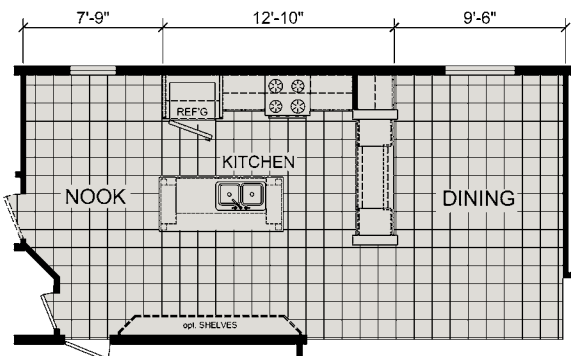
SxS REFER/FREEZER OPTION



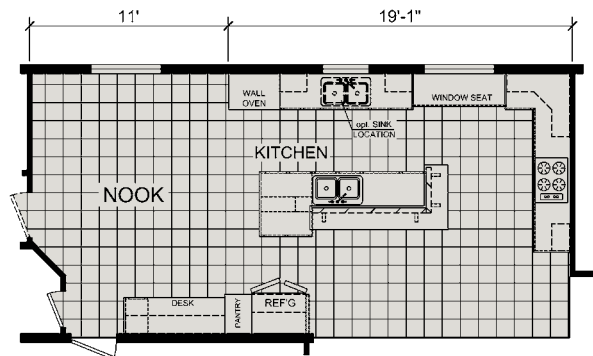
OPTIONAL POWDER ROOM & MBED CLOSET



OPTIONAL LARGER MBED CLOSET & MAKE-UP TABLE



OPTIONAL KITCHEN

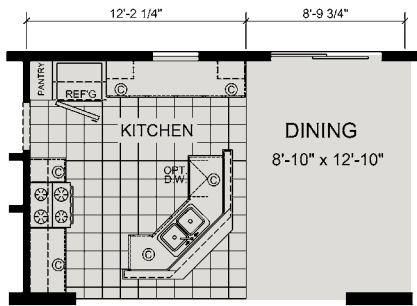
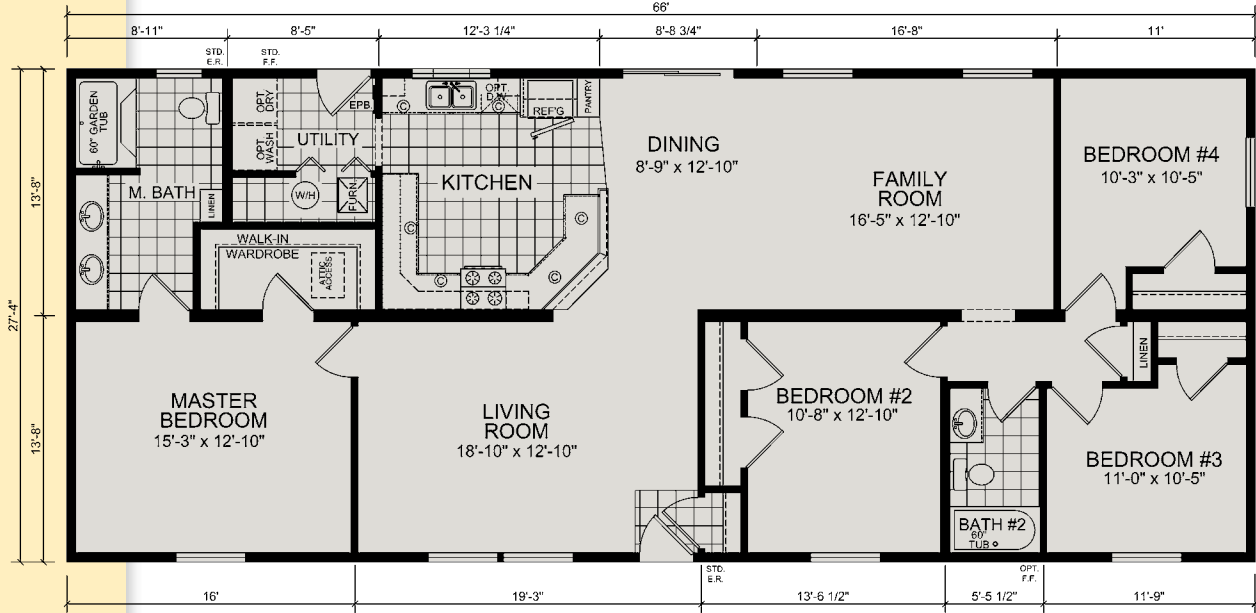


OPTIONAL ULTIMATE KITCHEN

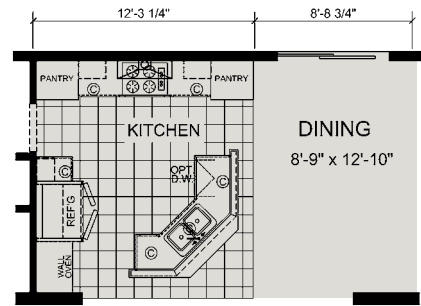


Macomb HS 66301

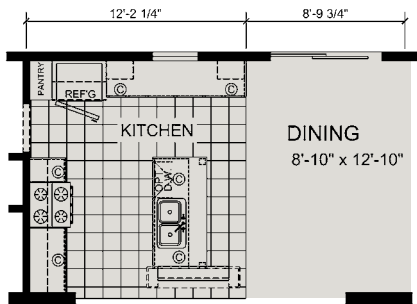
4 BR | 2 Bath | 1804 Sq. Ft.



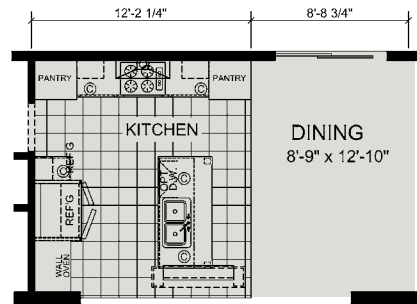
OPTIONAL KITCHEN #1



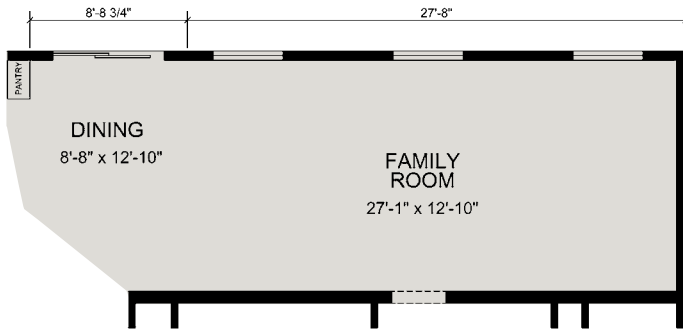
OPTIONAL ULTIMATE KITCHEN #1



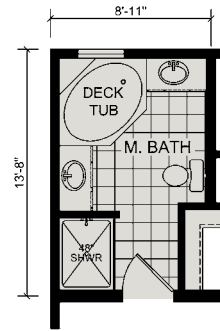
OPT. KITCHEN #2



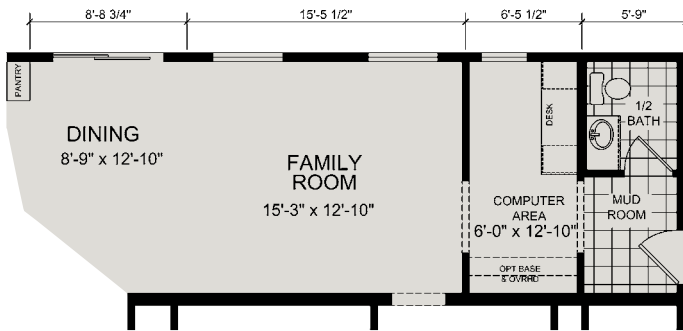
OPTIONAL ULTIMATE KITCHEN #2



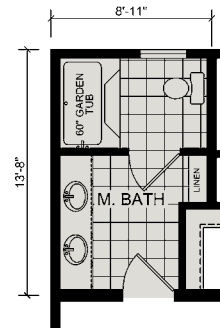
OPTIONAL FAMILY ROOM



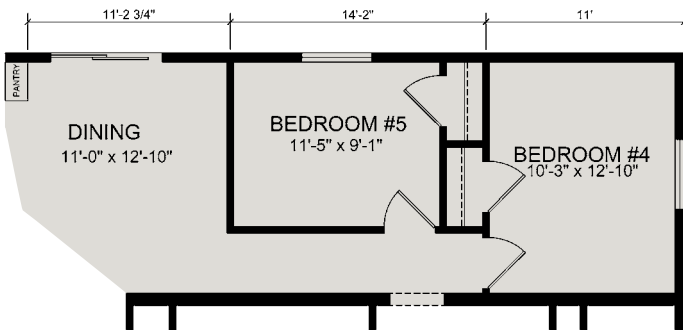
OPTIONAL MASTER BATH #1



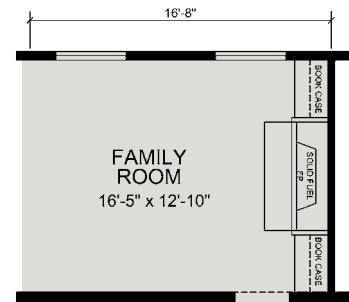
OPTIONAL MUD ROOM & COMPUTER ROOM



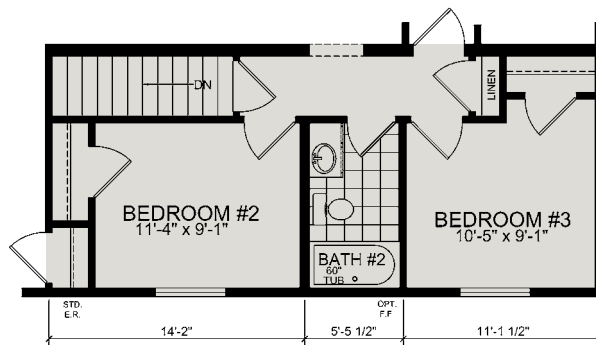
OPTIONAL MASTER BATH #2



OPTIONAL 5th BEDROOM



OPTIONAL FAMILY ROOM FIRE PLACE



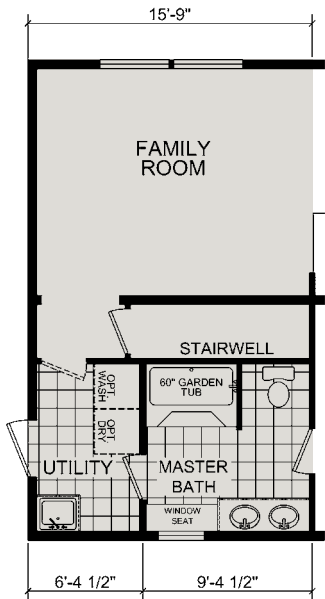
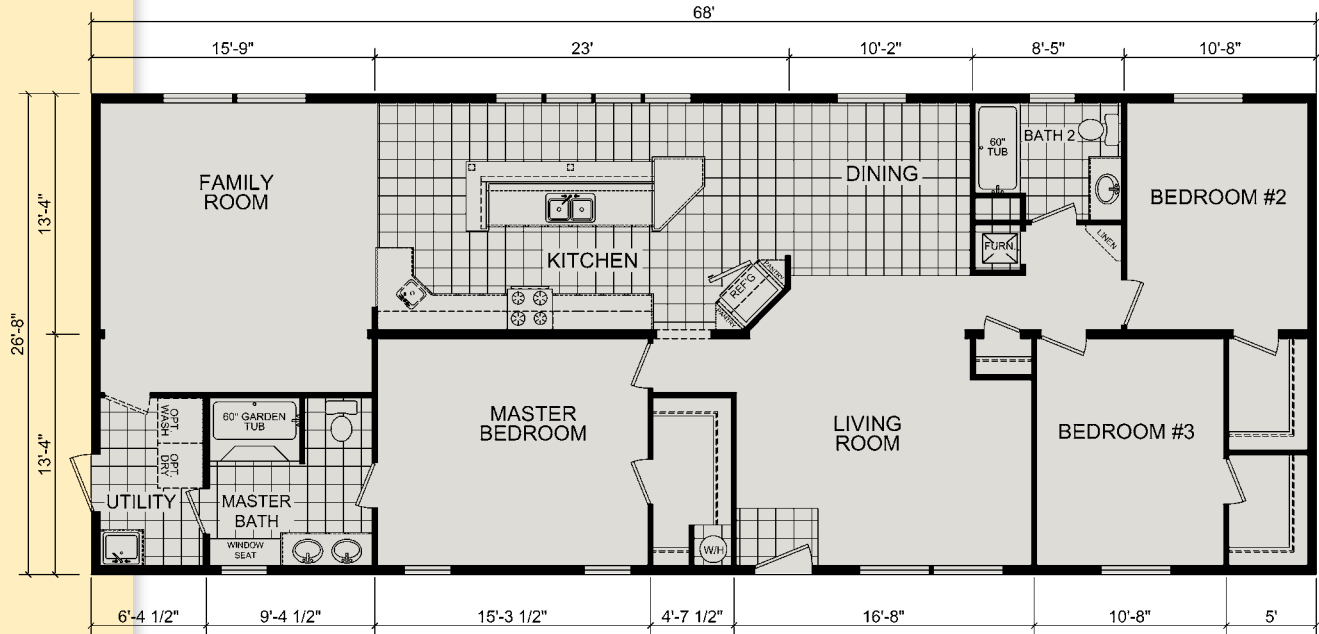
OPTIONAL BASEMENT



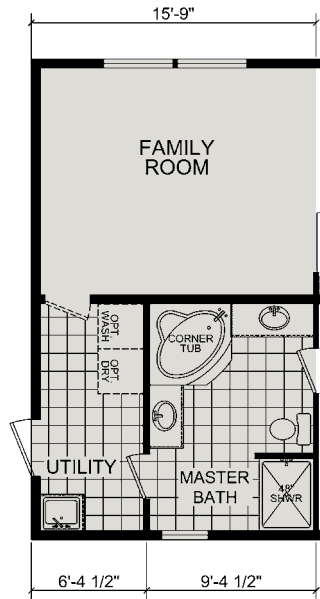
Fillmore

LS 68301

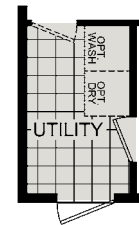
3 BR | 2 Bath | 1813 Sq. Ft.



OPT STAIRWELL

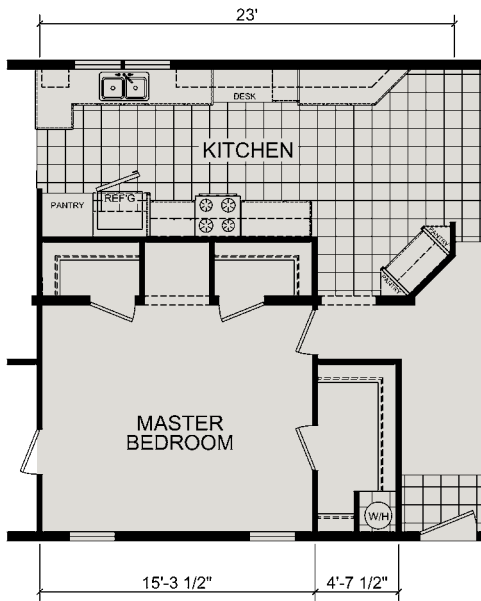


OPT MASTERBATH N/A
w/STAIRWELL

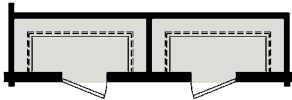


OPT EXT DOOR
LOCATION

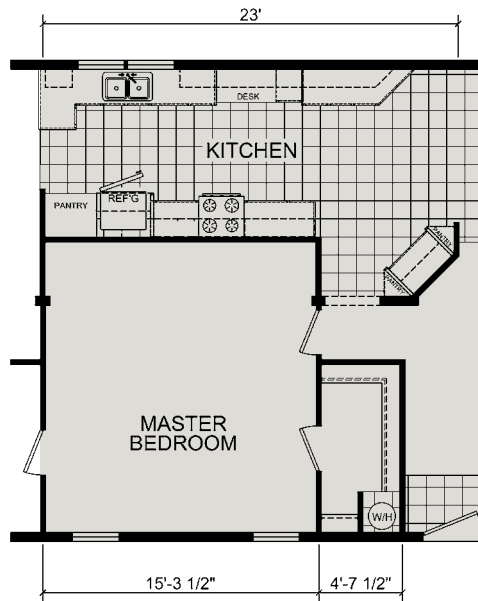
This floor plan may vary, pending modular approval.



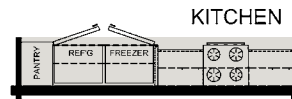
OPTIONAL POWDER ROOM
w/OPTIONAL KITCHEN



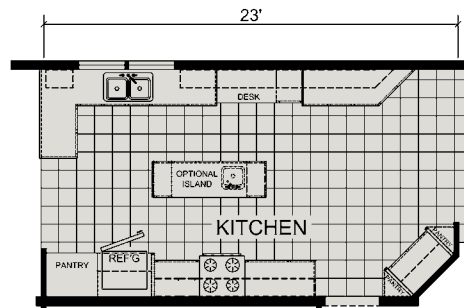
OPT LARGER CLOSET for
POWDER ROOM Option



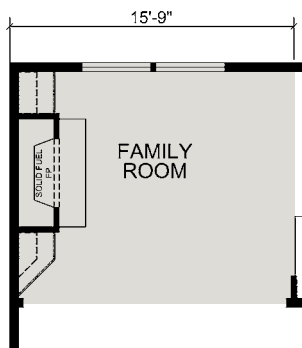
OPT LARGER MASTER BEDROOM
w/OPTIONAL KITCHEN



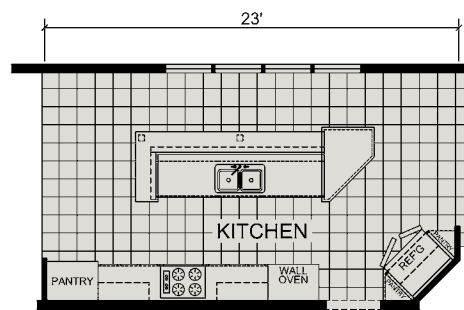
S X S REFER/FREEZER OPTION



OPTIONAL KITCHEN



OPT FIREPLACE

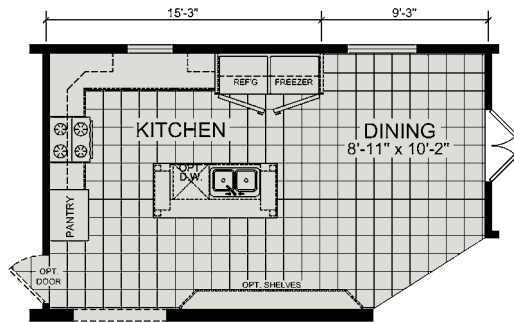
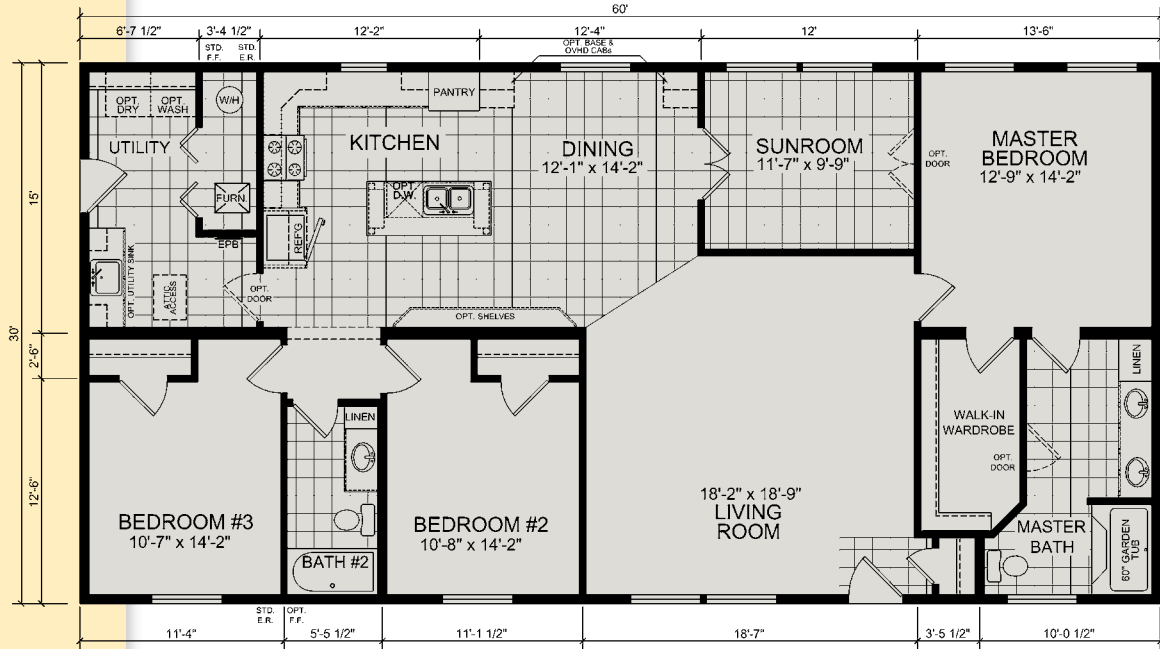


OPTIONAL ULTIMATE KITCHEN

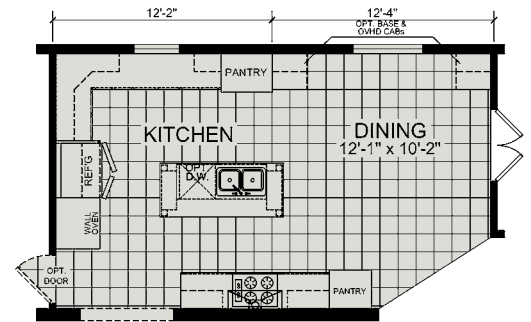


Fenton HS 60301

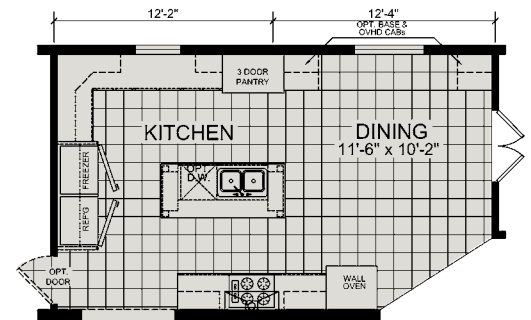
3 BR | 2 Bath | 1800 Sq. Ft.



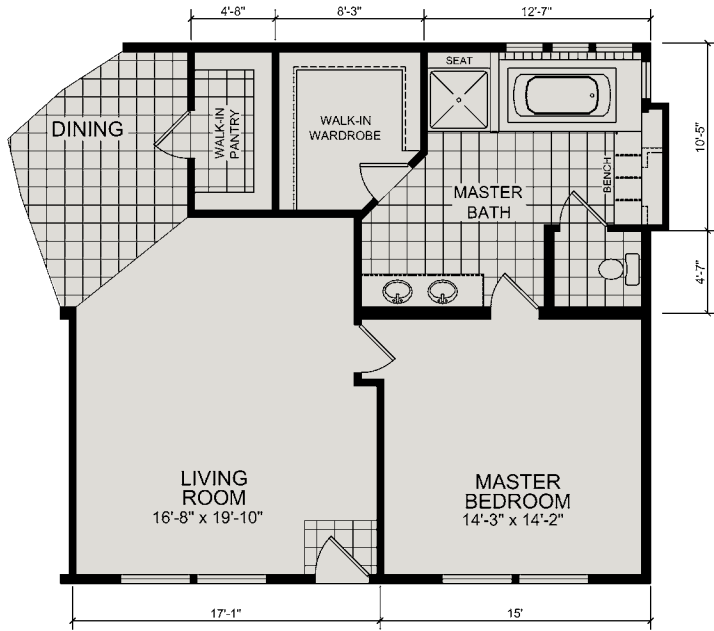
OPTIONAL KITCHEN LAYOUT



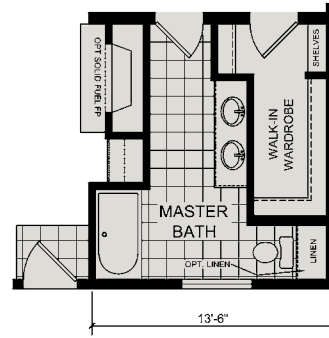
OPTIONAL ULTIMATE KITCHEN #1



OPTIONAL ULTIMATE KITCHEN #2



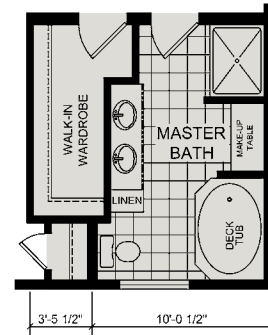
**OPTIONAL SUITE RETREAT
(NO SUNROOM)**



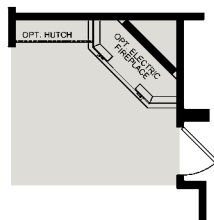
**OPTIONAL MASTER BATH #2
SHOWN w/ OPT. FIREPLACE
(N/A IN ALL STATES, SEE STATE REQ. SHEET)**



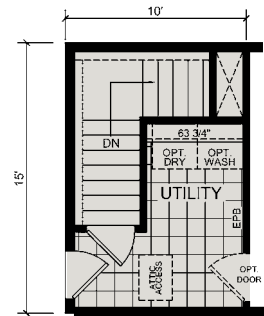
**OPTIONAL MASTER BATH #3
(NO SUNROOM)**



OPTIONAL MASTER BATH #1



**OPTIONAL ELECT. FIREPLACE & OPT. HUTCH
(AVAILABLE WITH MSTR. BATH OPT. #3
AND SUITE RETREAT ONLY)**



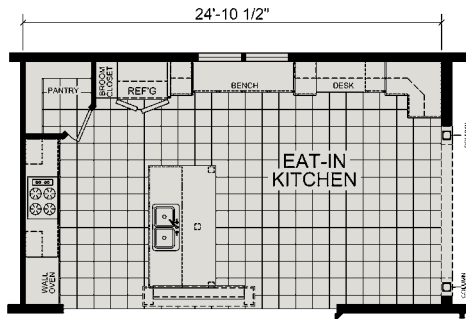
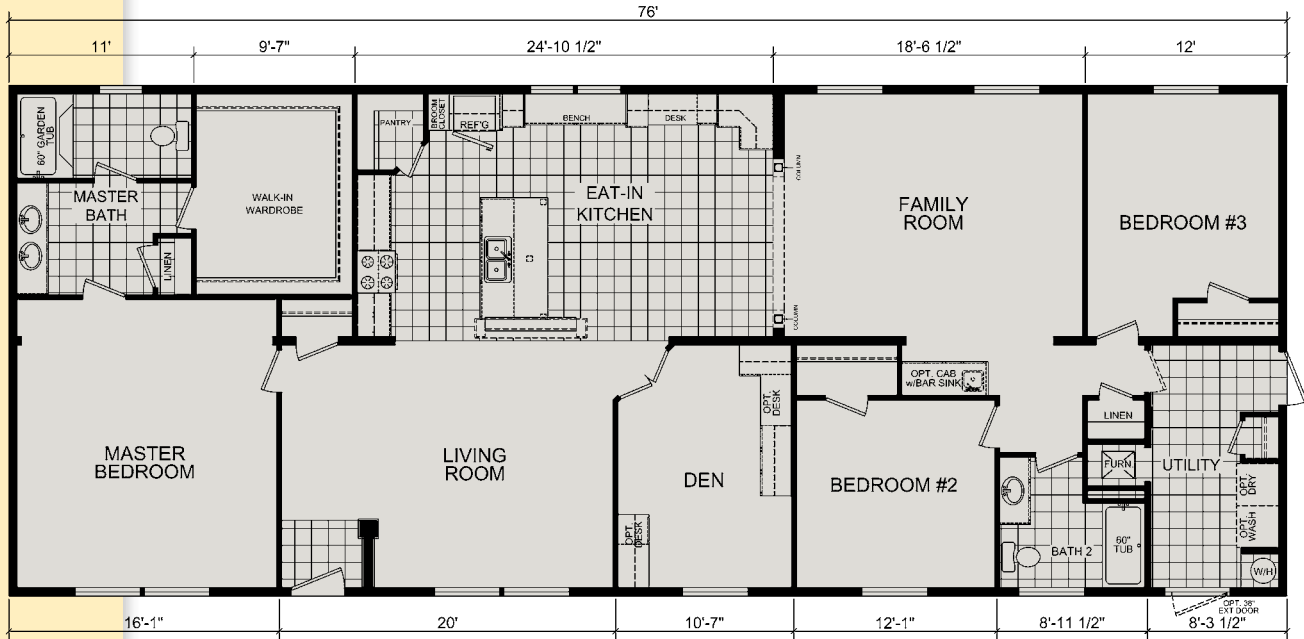
**OPTIONAL STAIRWELL
(NO FURNACE AND W/H INCLUDED)**



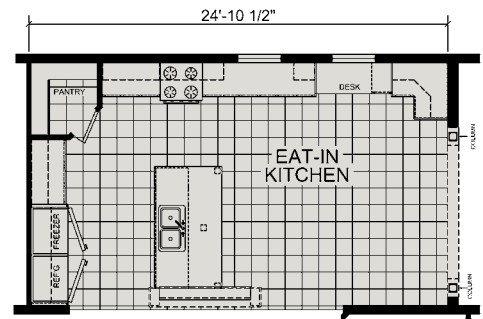
Kennedy

LS 76301

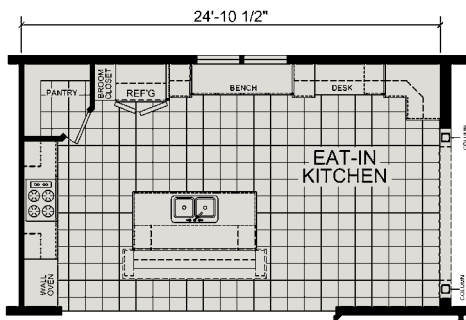
3 BR | 2 Bath | 2306 Sq. Ft.



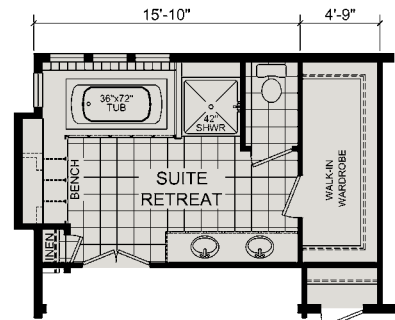
OPTIONAL ULTIMATE KITCHEN



OPTIONAL SIDE BY SIDE REFER/FREEZER

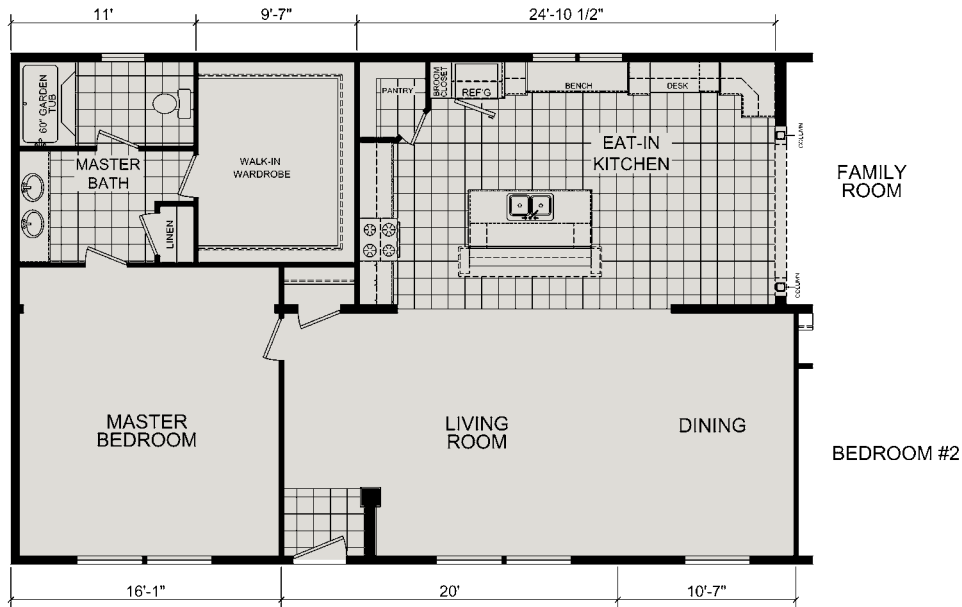


OPTIONAL ULTIMATE KITCHEN w/OPT ISLAND

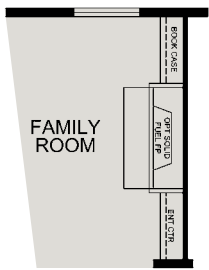


OPT SUITE RETREAT LAYOUT

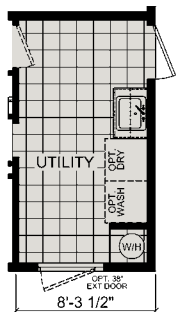
This floor plan may vary, pending modular approval.



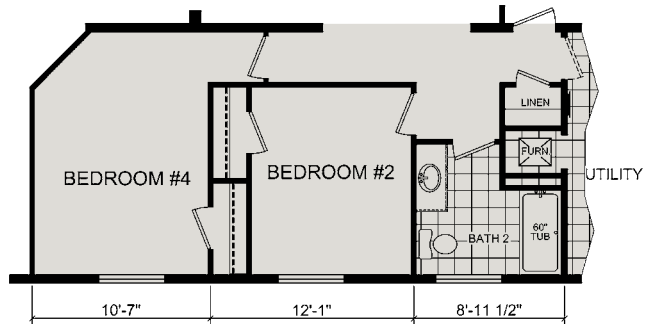
OPTIONAL FORMAL DINING-ROOM w/OPT ISLAND LAYOUT



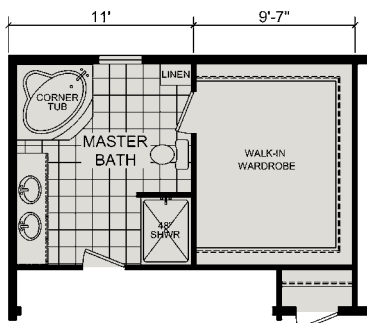
OPTIONAL FIREPLACE - ENTERTAINMENT CTR



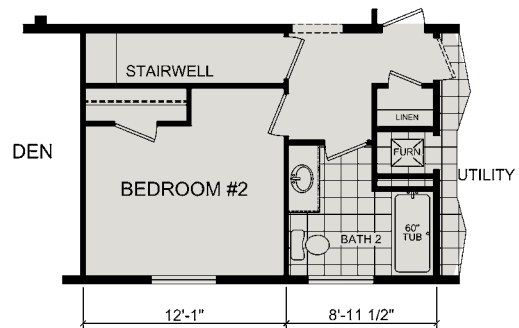
OPTIONAL U.R. SINK



OPTIONAL 4th BEDROOM



OPT MASTERBATH LAYOUT



OPTIONAL STAIRWELL



Select Modular

Standard Features

FRAMES & FLOORS

Open-Web Joist Floor
Returnable Modular Carrier
5/8" OSB Floor Decking
Double 2 x 10 Rim Joist /
LVL Marriage Line Rim Joist
Baseboard Registers w/ 6" Round Boots
Shaw Carpet
5 Lb. Rebond Carpet Pad
Linoleum in Wet Areas & Foyer

EXTERIOR

2 x 6 Wall Studs / 16" O.C.
R-19 Insulation
7/16" OSB Sheathing
House Wrap
Dutch Lap Double 4" Vinyl Siding
15" Raised Panel Shutters - Doorside

CEILING & ROOF

8' Flat Ceilings w/ Stomped Textured
Finish
5/12 Roof Pitch All 28 Wides
7/12 Roof Pitch All 30' Wides
R-40 Cellulose Insulation
7/16" OSB Roof Sheathing
30 Yr. Fiberglass Dimensional Shingles
12" Vented Eaves
Steel Fascia Trim
Fully Vented Vinyl Soffit
Roof Load Meets or Exceeds State
Requirements

EXTERIOR DOORS & WINDOWS

Vinyl Single Hung, Low "E" w/ Grids
36 x 80 White Steel 6-Pnl w/ Storm - Frt
36 x 80 White Steel 6-Pnl Fire Rated -
Rear
Brush Nickel Lockset / Deadbolt

INTERIOR WALLS & DOORS

2 x 4 Interior Walls
2 x 6 or 2 x 4 Plumbing Walls
2 x 4 Marriage Wall
6 Panel White Interior Doors
w/3 Mortised ORB Hinges
ORB Lever Door Handles
Furnace & Water Heater Doors - VBP

INTERIOR FINISH

1/2" Drywall T/O
Rounded Drywall Corners
Living Areas, Kitchen, MBR
Master Bath - Painted
Wainscot in Dining Room w/Chair Rail
& 2 Tone Paint - VBP
Valances Throughout w/Side Panels in
LVR / FR / DR
2" PVC Blinds Throughout
Decorative Rod in LVR / FR / DR
ORB Interior Light Fixtures
2 1/2" White Door Casing
2 1/2" White Window Casing
3" White Baseboard
Finished Ceiling Joints
Ceramic Edging Throughout
Ceramic Backsplash Throughout

KITCHEN & BATH

30" Deluxe Electric Range
17 CF Over/Under Refer
Ventline Range Hood w/Charcoal Filter
Black Kit Sink w / ORB Faucet
Kitchen Can Lights - VBP
Ceramic Tile Between Range/Range
Hood
Fiberglass Tub in Master Bath
Fiberglass Shower in Master Bath - VBP
60" Fiberglass Tub/Shower in Hall Bath
ORB Bath Faucets
Elongated China Commode
White China Lavs
Bath Vents - Eave Vent / Side Discharge
White Ceramic Tub/Shower Trim
3 Bulb ORB Light in Baths

CABINETRY

Cabinet Choices:
Glazed St. Louis Maple Flat Panel
Bonsai Cherry Flat Panel
Hickory Raised Panel
Hardwood Stiles
1/2" Cabinet Side Panels
Deluxe Roller Guides
Single Drawer Bank
O/H Cabinets w / Adjustable Shelves
ORB or Nickel Knobs
Drawers Over Doors
Center Shelf in Base Cabinet
Bottom Cabinet Trim
3" Cabinet Trim
Hickory/St. Louis Maple/Bonsai Cherry
Stiles and Rails

HEATING & PLUMBING

40 Gallon Electric Water Heater
Water Shut-Offs @ All Fixtures
PEX Water Lines
Schedule 40 PVC Drain / Vent Lines
1 Frost Free Exterior Faucet
Plumb for Washer - Per Plan
Electric Furnace
Perimeter Drop-In Registers

ELECTRICAL

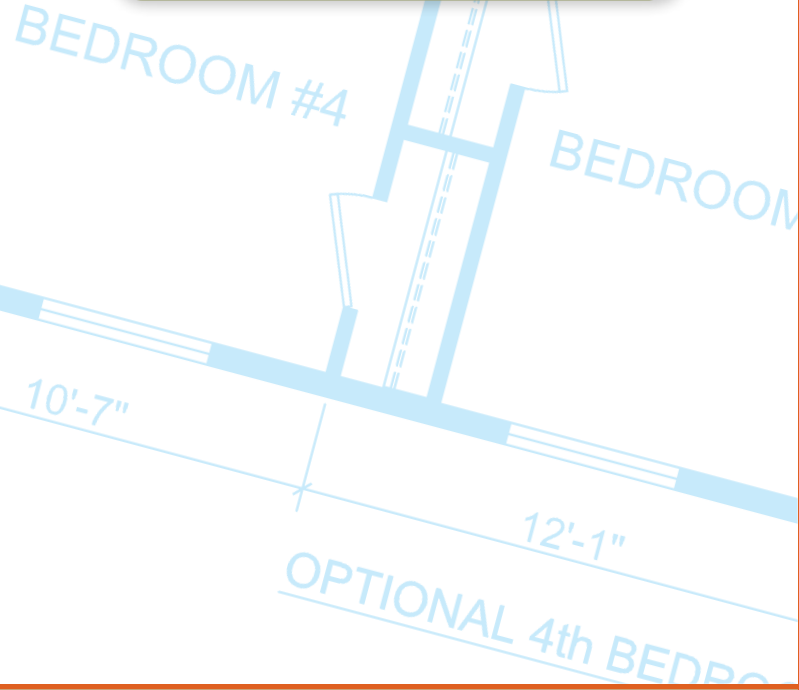
200 AMP Service w/ 30-40 Box
12-2 Copper T/O
Wire for Electric Dryer
Smoke Detectors - All Bedrooms & LR
GFI Recepts - Kitchen, Baths, (2)
Exterior
White Coach or Charcoal Aluminum
Torch - Front Door, Rear Door or
Patio Door
Can Lights Over Cabinets & Island in
Kitchen
1 Phone Jack is Standard

NOTE:

ORB stands for Oil Rubbed Bronze



308 Sheridan Drive
PO Box 95
Topeka, IN 46571
www.redmanhomesofindiana.com



DISCLAIMER: Due to continuous product development and improvement, prices, specifications and materials are subject to change without notice or obligation. Square footage and other dimensions are approximate. Images such as renderings, photos and floorplans may be shown with optional features and/or third-party additions that may not be available in all regions or situations. Artist renderings are not intended to be an actual representation of the home.