

2014

NEW MOON MODULAR



REDMAN  HOMES.®





WHY REDMAN?

FLEXIBILITY

QUALITY

VARIETY

SATISFACTION

We build a full complement of sizes. We offer homes from 1300 sq. ft. to 2280 sq. ft., all with innovative and spacious designs.

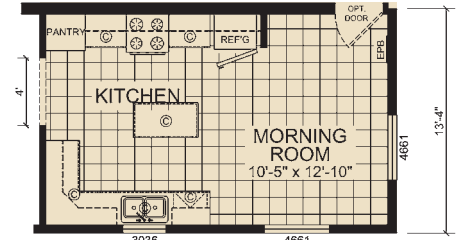
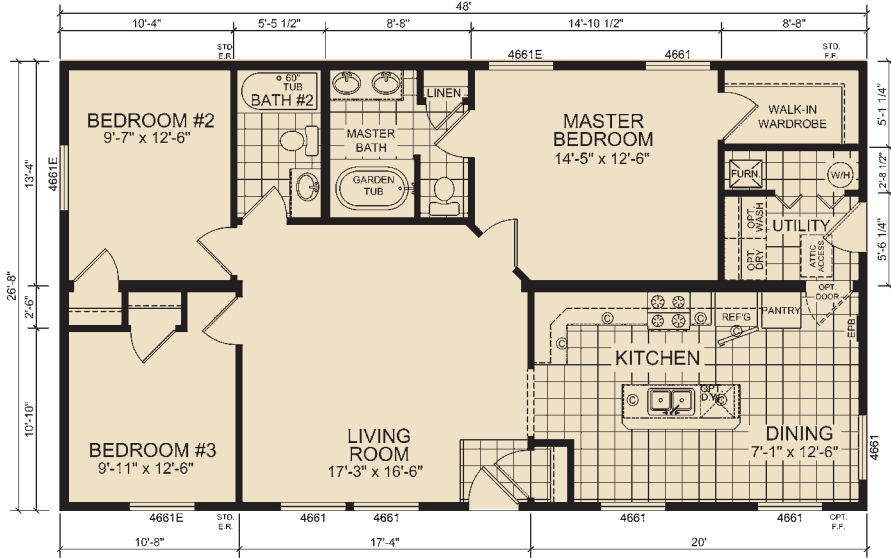
Our standards list is very extensive and each base price already includes many standards that would be an additional cost from other manufacturers.

We offer an options list that is also quite thorough. Our flexibility gives you a very wide variety of choices when it comes to your home.

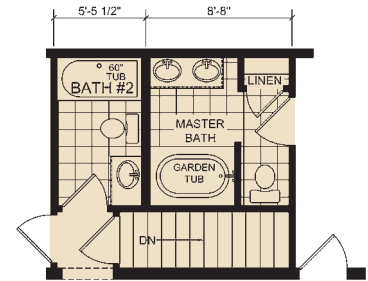
Customer satisfaction is always a top priority. We strive to make sure our customers are satisfied homeowners.

THE SUNSET

RNM 4811 | 28'x48' | 3 Bed, 2 Bath | 1280 sq. ft.



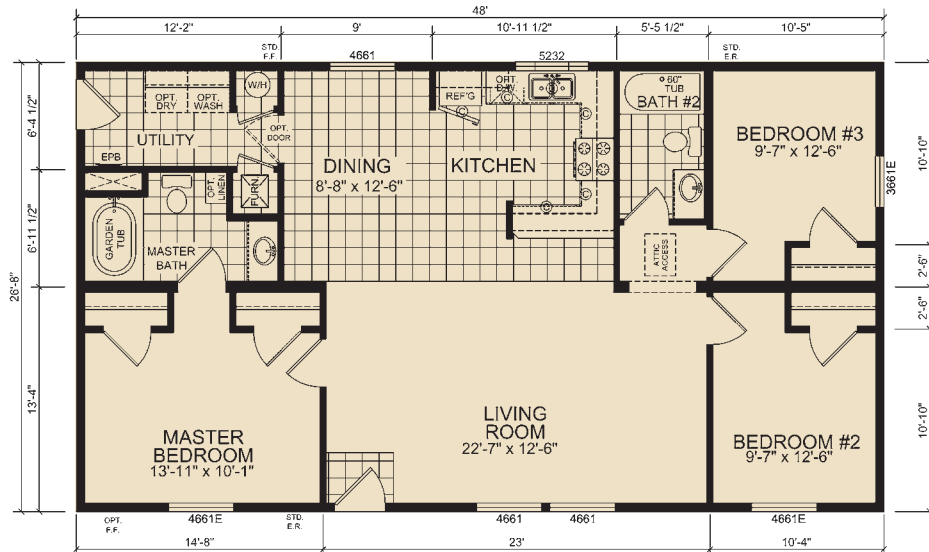
OPTIONAL KITCHEN

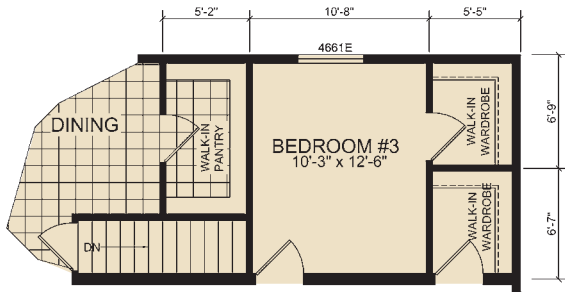
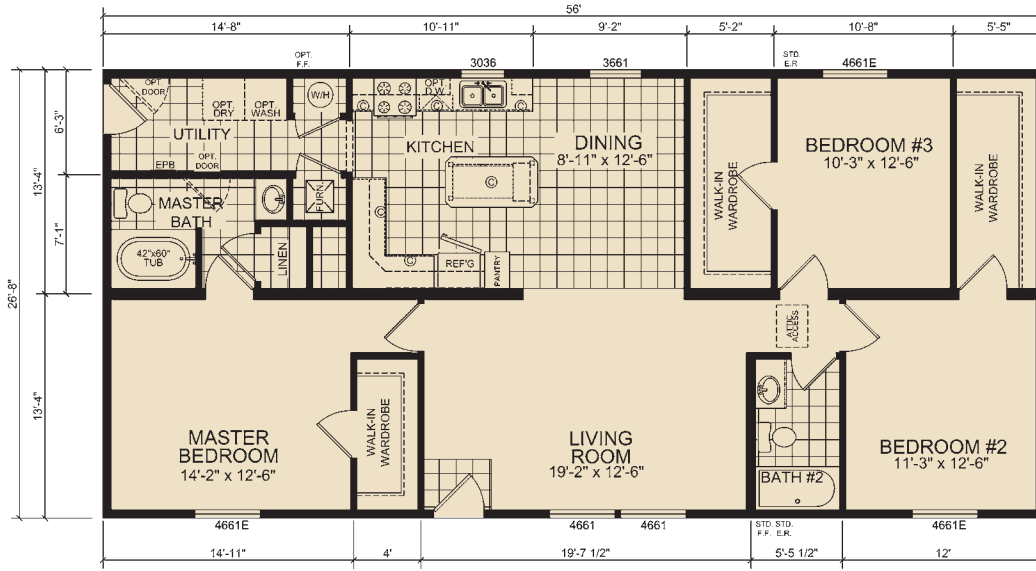


OPTIONAL BASEMENT

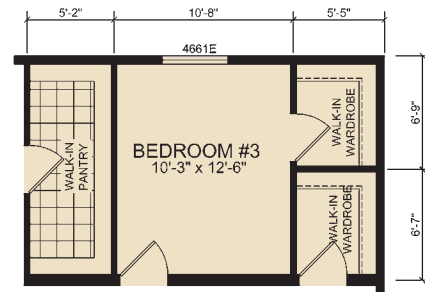
THE DAYTONA

RNM 4813 | 28'x48' | 3 Bed, 2 Bath | 1280 sq. ft.

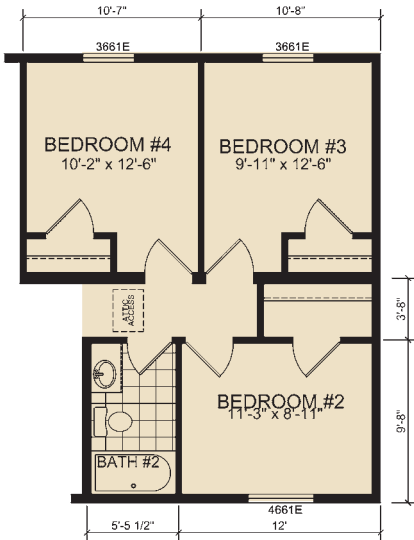




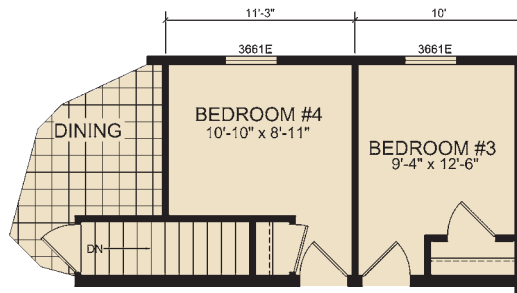
OPTIONAL WALK-IN PANTRY w/ BASEMENT



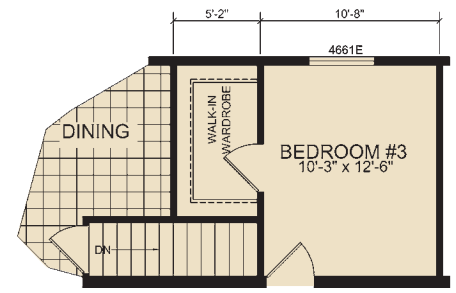
OPTIONAL WALK-IN PANTRY



OPTIONAL 4th BEDROOM



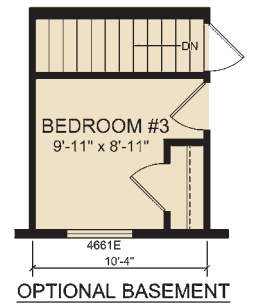
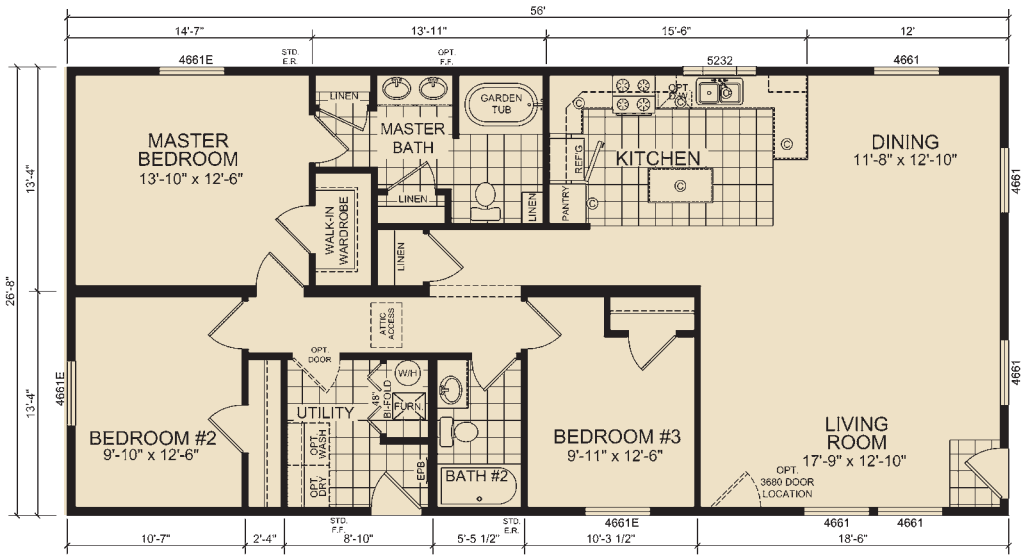
OPTIONAL 4th BEDROOM w/ BASEMENT



OPTIONAL BASEMENT

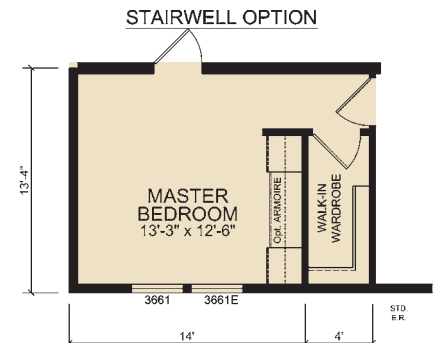
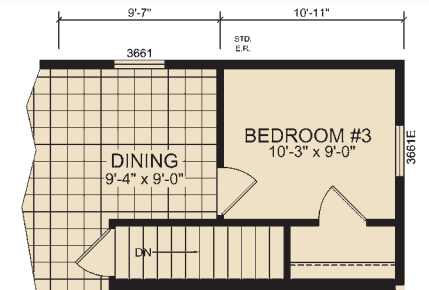
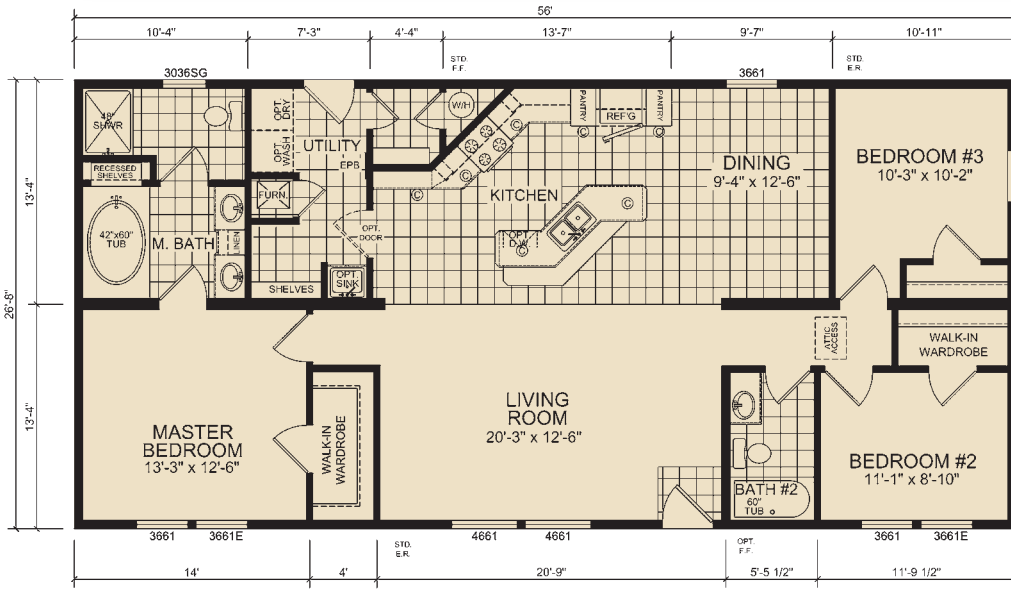
THE CRANBERRY

RNM 5629 | 28'x56' | 3 Bed, 2 Bath | 1493 sq. ft.



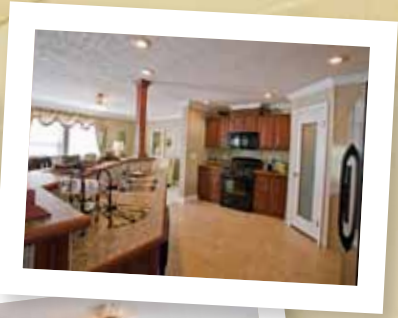
THE NEWPORT

RNM 5631 | 28'x56' | 3 Bed, 2 Bath | 1493 sq. ft.

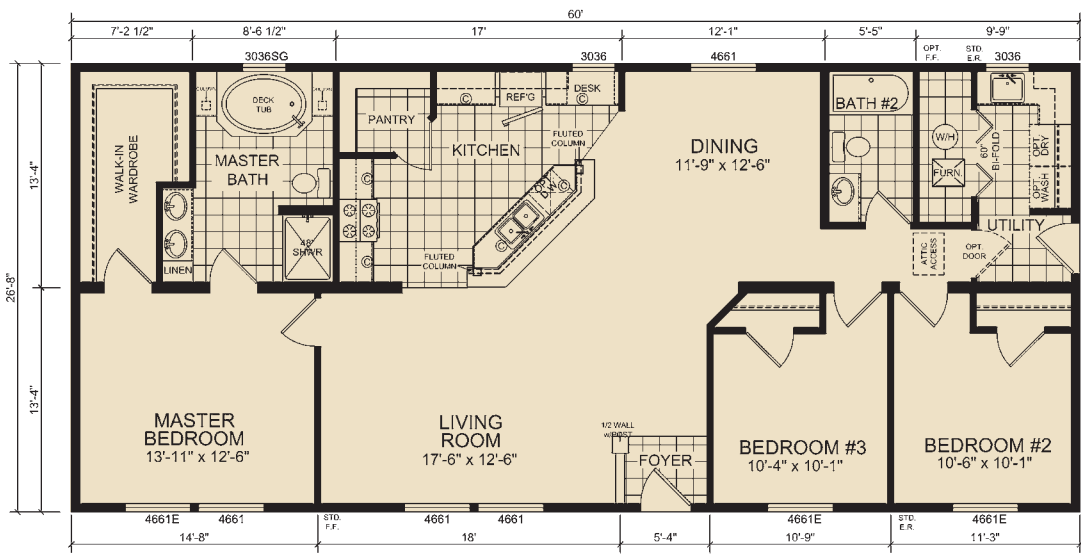




Renderings may include onsite builder options.



THE MALIBU RNM 6035 | 28'x60' | 3 Bed, 2 Bath | 1600 sq. ft.



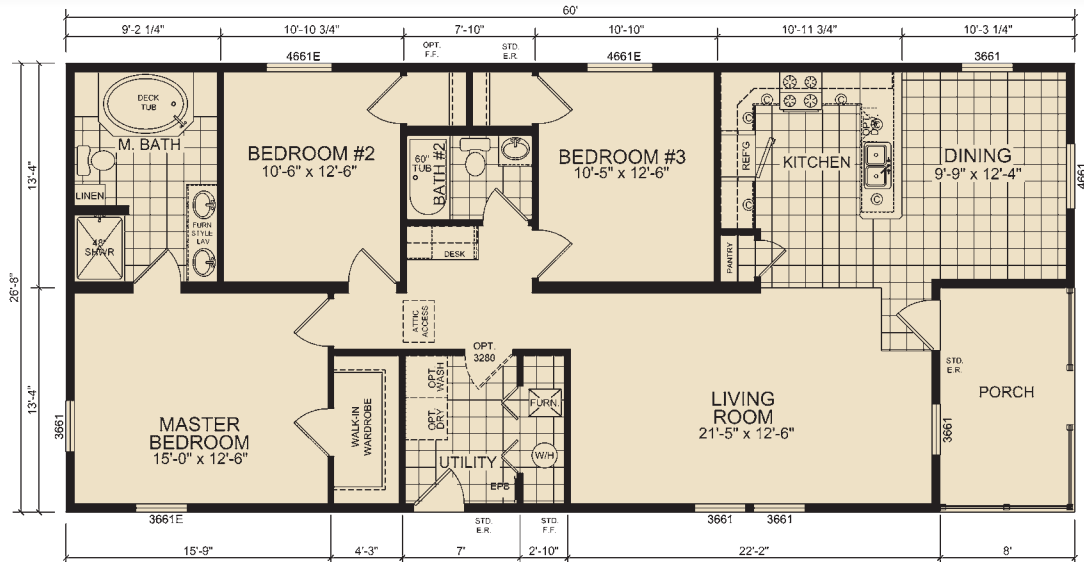
THE MYRTLE

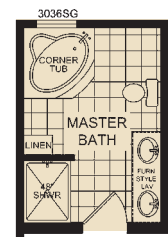
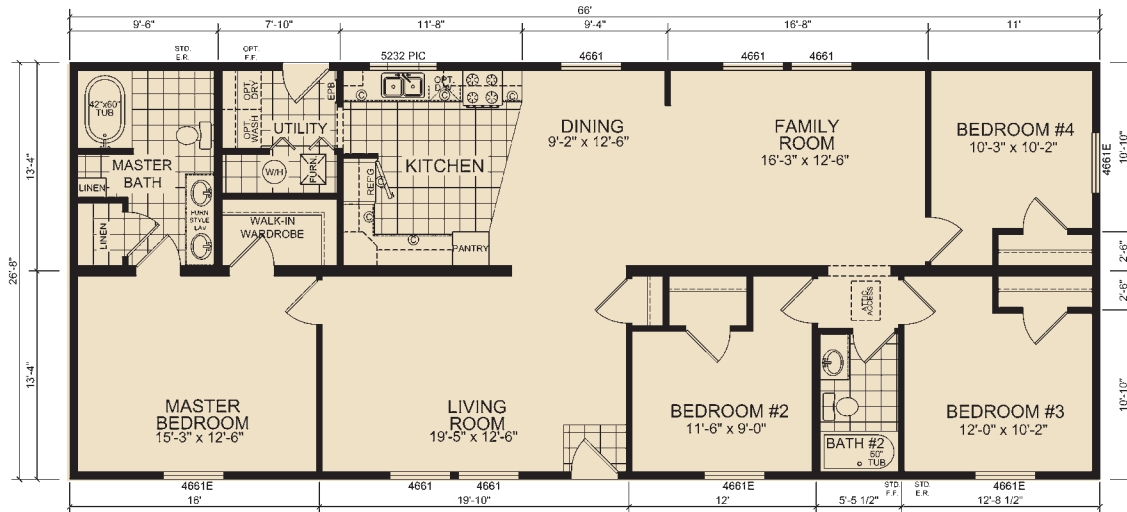
RNM 6033 | 28'x60' | 3 Bed, 2 Bath | 1600 sq. ft.



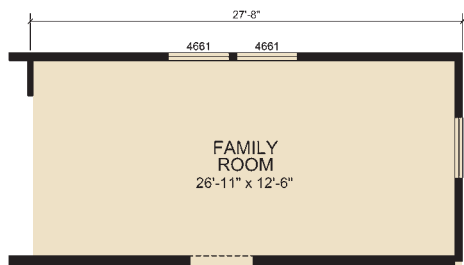
THE OCEANSIDE

RNM 6031 | 28'x60' | 3 Bed, 2 Bath | 1493 sq. ft.

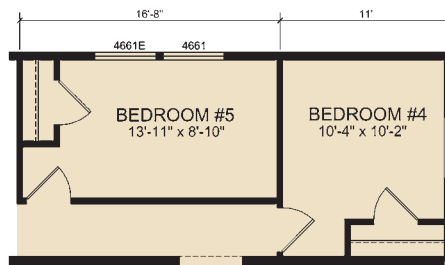




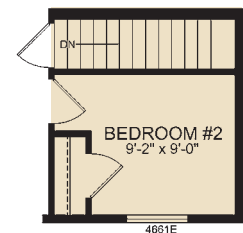
OPTIONAL MASTER BATH



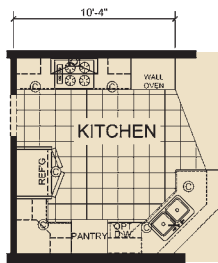
OPTIONAL FAMILY ROOM



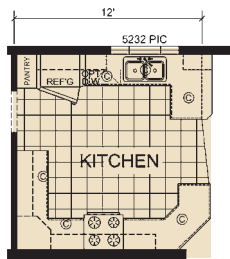
OPTIONAL 5th BEDROOM



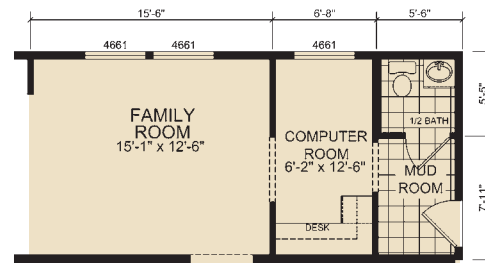
OPTIONAL BASEMENT



OPTIONAL ULTIMATE KITCHEN



OPTIONAL KITCHEN

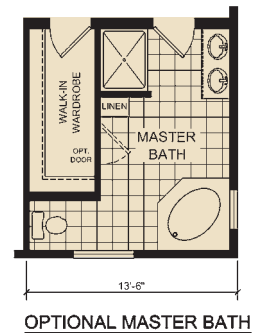
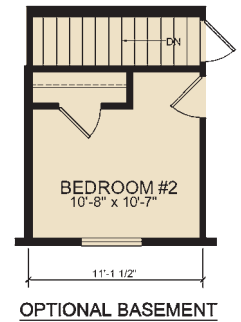
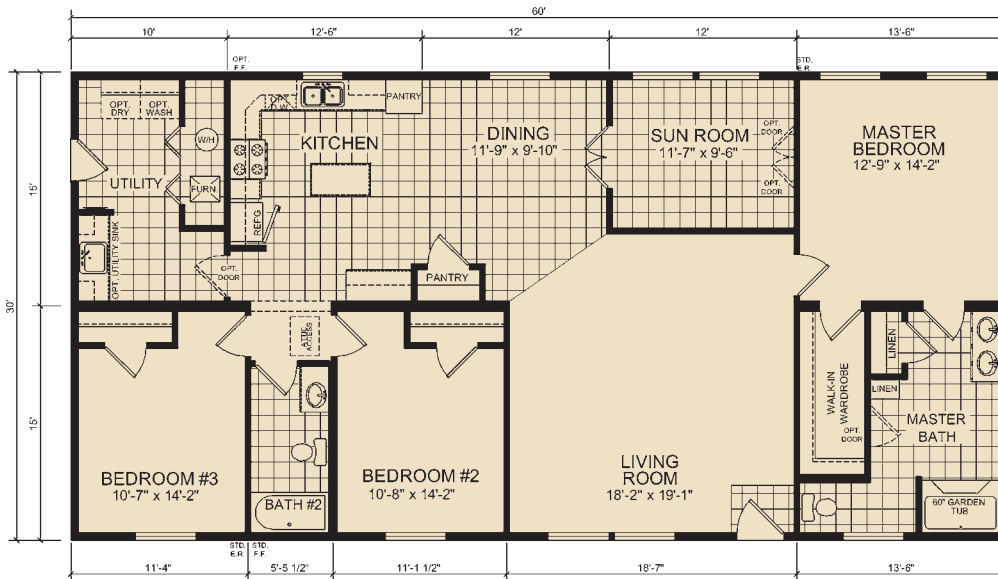


OPTIONAL MUD ROOM & COMPUTER ROOM



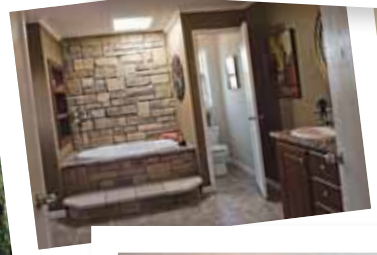
Renderings may include onsite builder options.

THE SOUTH BEACH RNM 6009 | 30' x 60' | 3 Bed, 2 Bath | 1800 sq. ft.

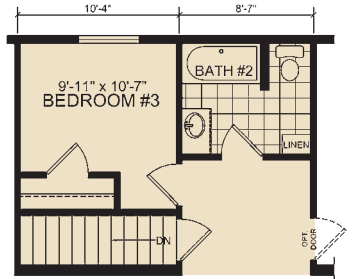
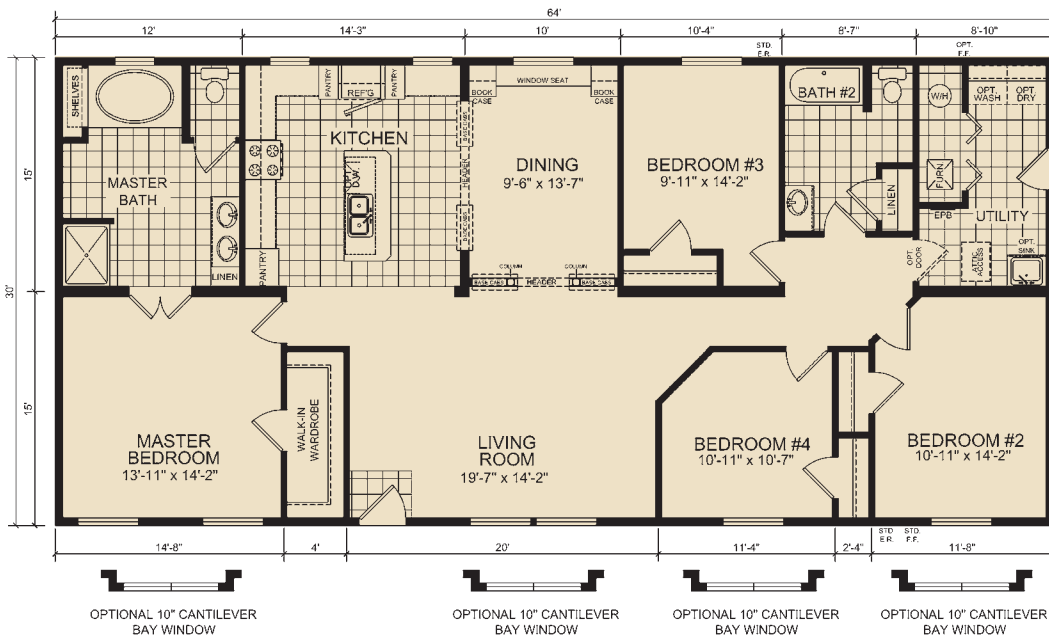




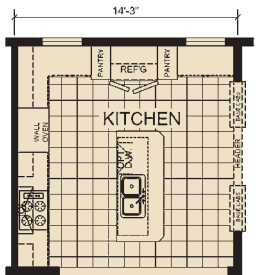
Renderings may include onsite builder options.



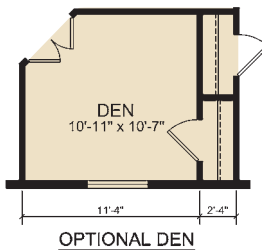
THE INDIAN RNM 6401 | 30'x64' | 3 Bed, 2 Bath | 1920 sq. ft.



OPTIONAL BASEMENT



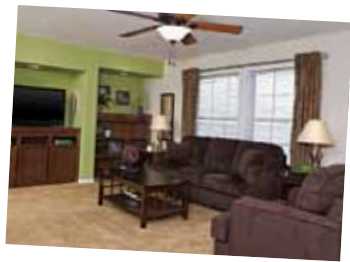
OPTIONAL ULTIMATE KITCHEN



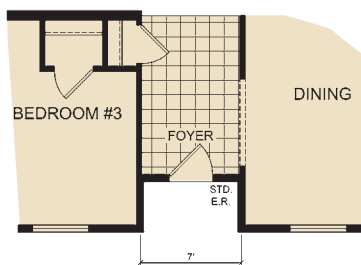
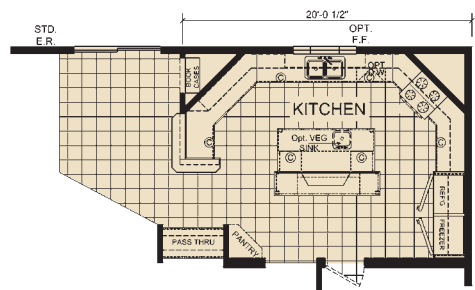
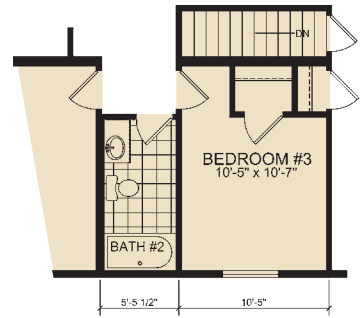
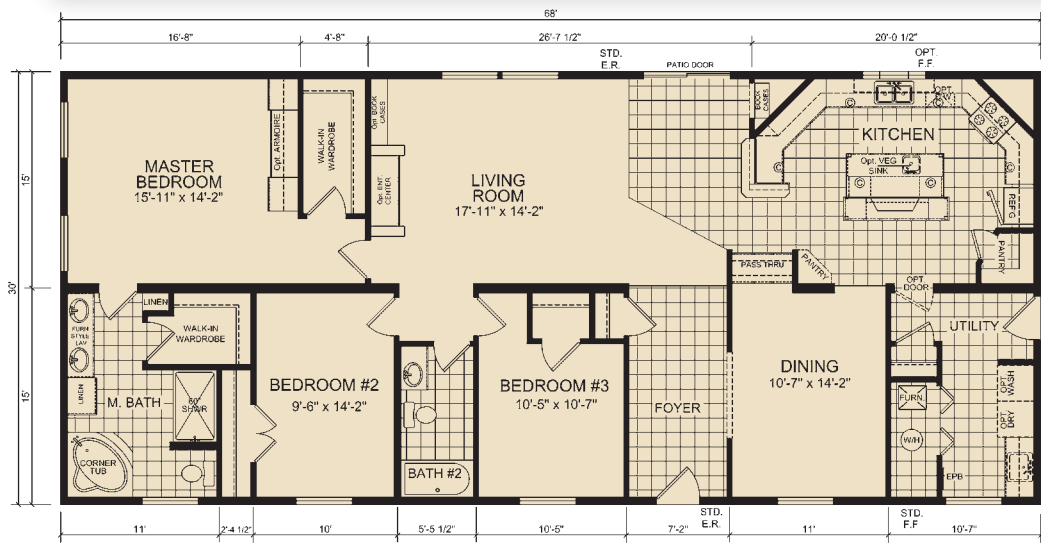
OPTIONAL DEN

THIS HOUSE IS ONLY AVAILABLE IN:
INDIANA, OHIO, MICHIGAN, WISCONSIN





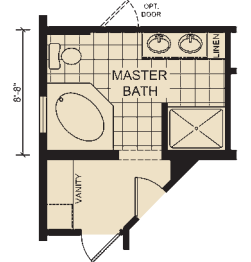
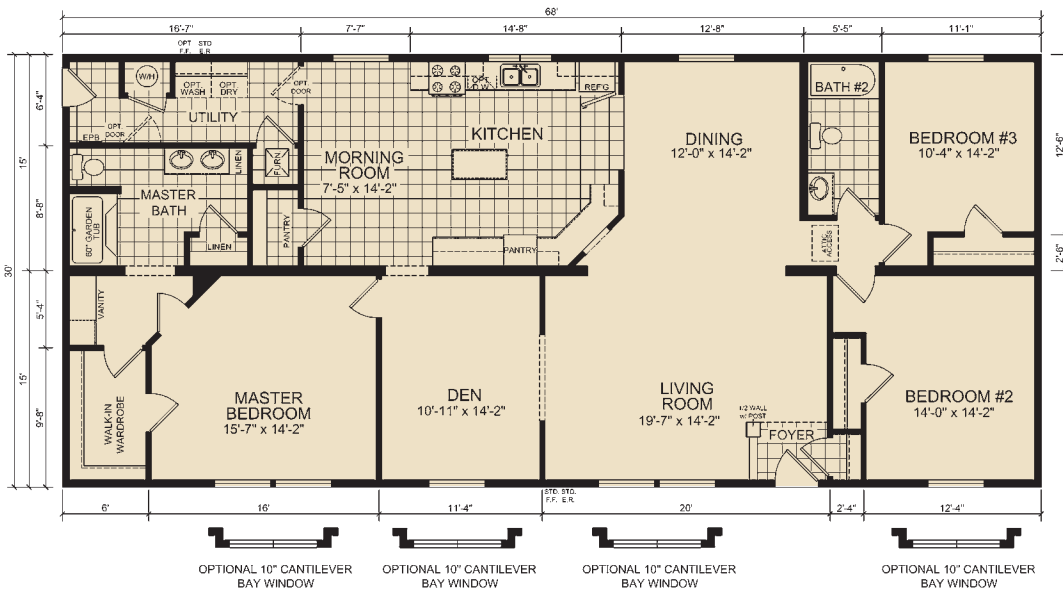
THE DAKOTA RNM 6815 | 30'x68' | 3 Bed, 2 Bath | 2040 sq. ft.



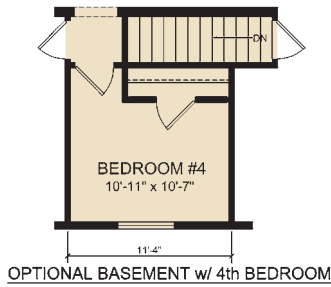


Renderings may include onsite builder options.

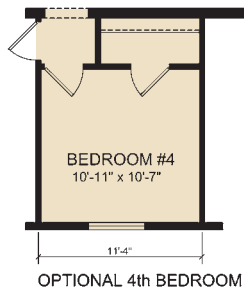
THE SILVER RNM 6801 | 30'x68' | 3 Bed, 2 Bath | 2040 sq. ft.



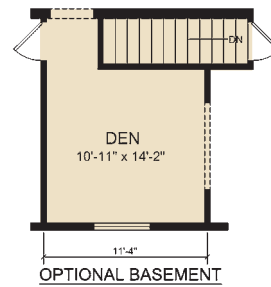
OPTIONAL MASTER BATH



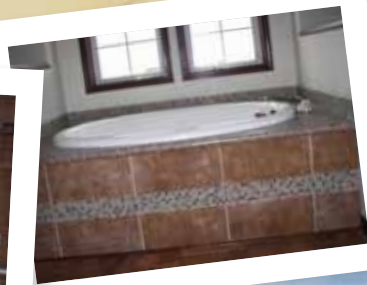
OPTIONAL BASEMENT w/ 4th BEDROOM



OPTIONAL 4th BEDROOM



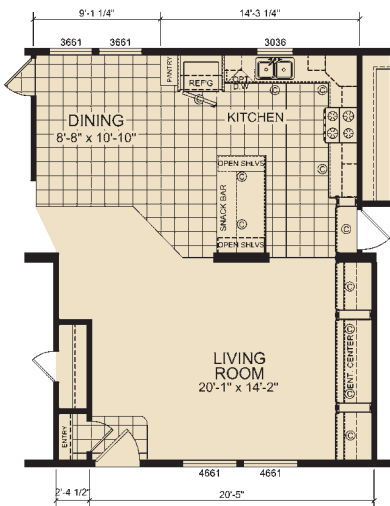
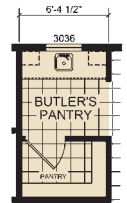
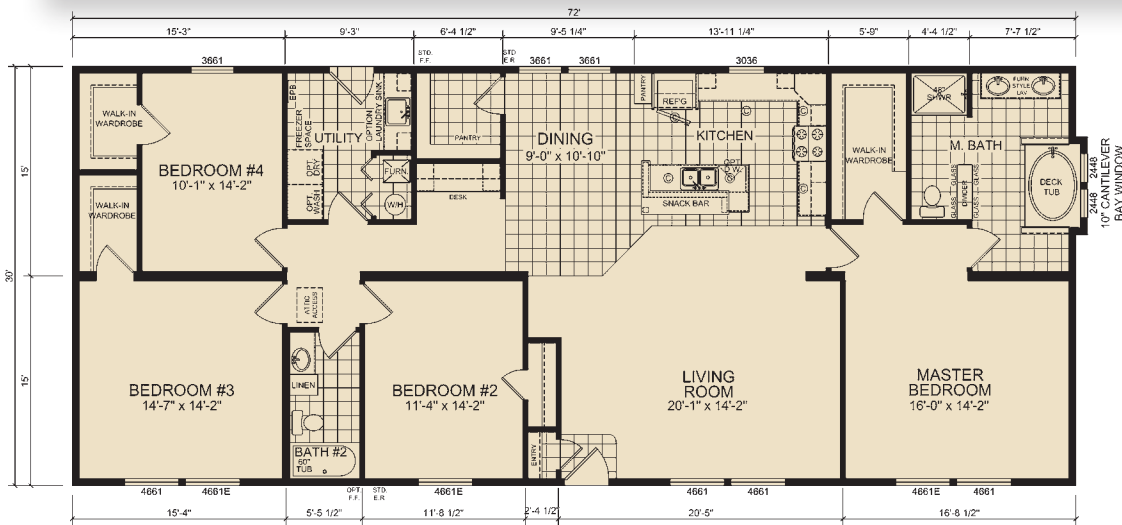
OPTIONAL BASEMENT



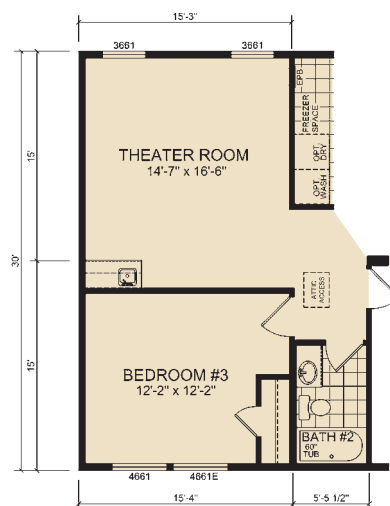
Renderings may include onsite builder options.

THE APOLLO

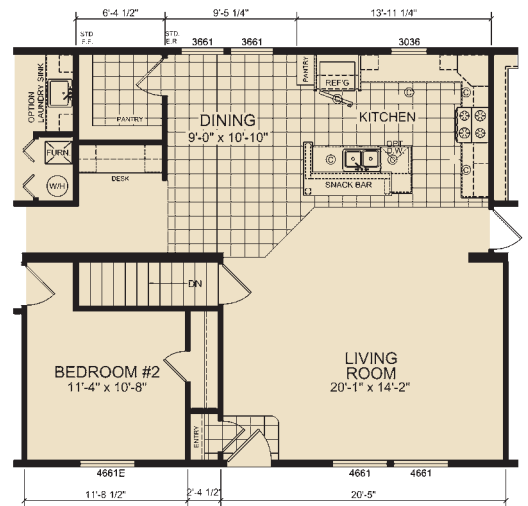
RNM 7201 | 30'x72' | 3 Bed, 2 Bath | 2160 sq. ft.



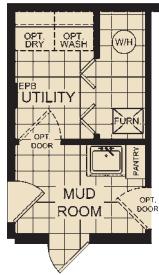
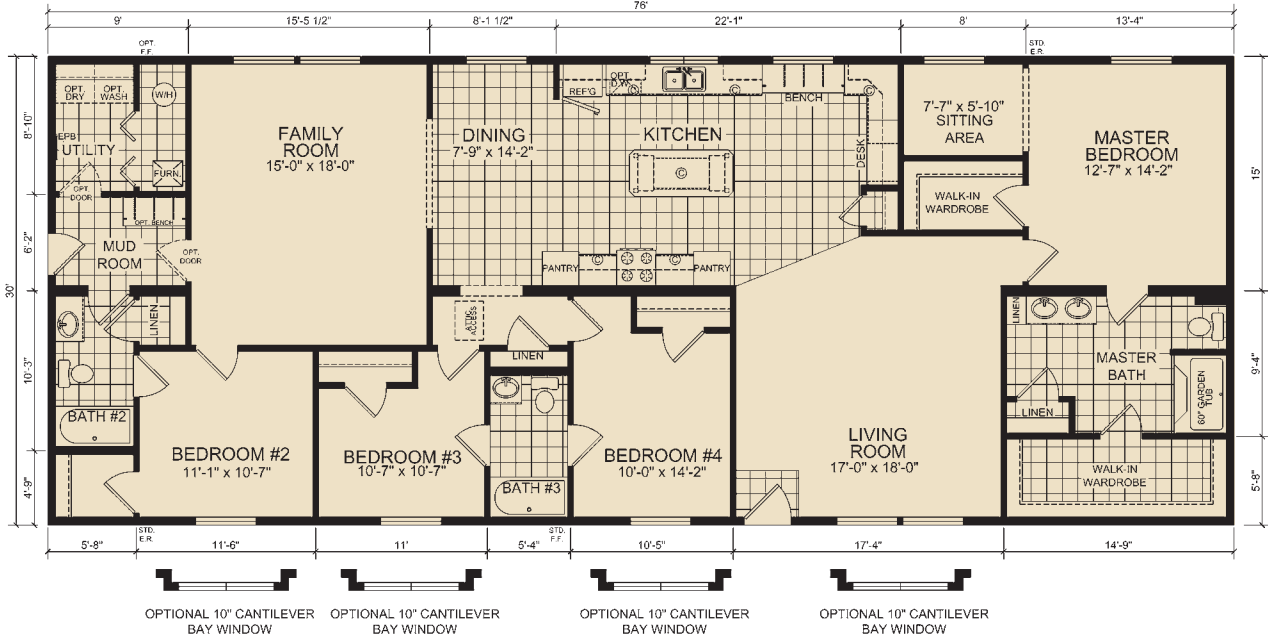
OPTION KITCHEN
OPTION VANISHING MATE LINE



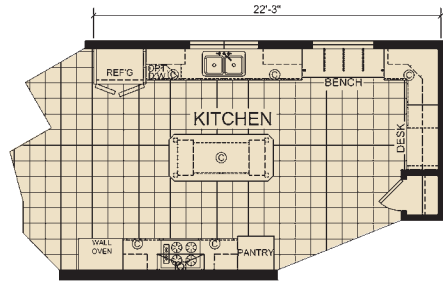
OPTION THEATER ROOM



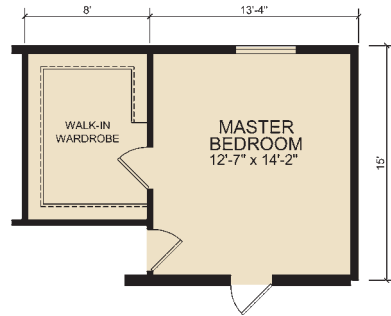
STAIRWELL OPTION



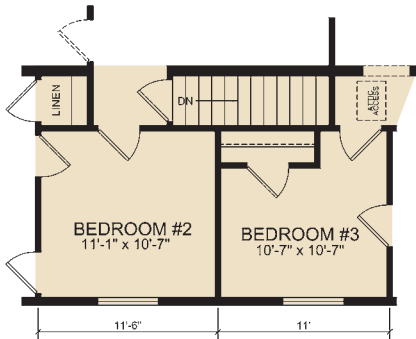
OPTIONAL UTILITY SINK



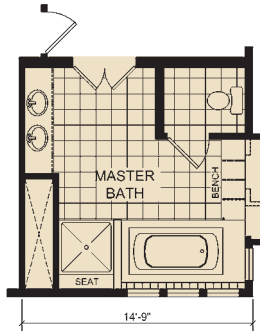
OPTIONAL ULTIMATE KITCHEN



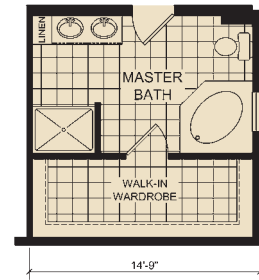
OPTIONAL WALK-IN WARDROBE



OPTIONAL BASEMENT



OPTIONAL SUITE RETREAT



OPTIONAL MASTER BATH

NEW MOON MODULAR

STANDARD FEATURES

FRAMES & FLOORS

Open-Web Joist Floor 19.2" O.C.
5/8" 4' x 8' OSB Floor Decking T&G
Double 2" x 10" Rim Joist
LVL Marriage Line Rim Joist
Baseboard Registers w/6" Round Boots
16 oz. Simply Stated Carpet
5 lb. Rebond Carpet Pad
Linoleum in Wet Areas & Foyer

EXTERIOR

2" x 6" Wall Studs / 16" O.C.
R-19 Insulation
7/16" OSB Sheathing
House Wrap
Dutchlap 4" Vinyl Siding
15" Raised Panel Shutters - Doorside

CEILING & ROOF

8' Flat Ceilings w/Stomped Textured Finish
5/12 Roof Pitch w/Rafter Spacing 24" O.C.
7/12 Roof Pitch STD 30' Wide
R-40 Cellulose Insulation
7/16" OSB Roof Sheathing
30 Yr. Fiberglass Dimensional Shingles
12" Vented Eaves
White Alum Fascia
Fully Vented Vinyl Soffit
Roof Load Meets or Exceeds
State Requirements

EXTERIOR DOORS & WINDOWS

Vinyl Single Hung, Low "E" w/Grids
36" x 80" White Seal 6 Panel w/Storm –
Front Door
36" x 80" White Steel 6-Panel Fire Rated –
Rear Door
Brush Nickel Lockset / Deadbolt

INTERIOR WALLS & DOORS

2" x 4" 24" O.C.
2" x 6" Plumbing Walls
1/2" Drywall T/O
Wood Tone 6 Panel Int. Doors
ORB Round Knobs / 2 Mortised Hinges
Metal Bi-Fold - VBP @ Furnace, Water Heater,
2 1/4" Ash Door & Window Casing
2 1/4" Ash Base Moulding
Ash Door and Window Jamb
Finished Ceiling Joint in Living Area
2 1/2" Ash Cove all Other Areas
2 1/4" Ash Base Moulding
Flat Door Stop
2" x 4" 16" O.C. Marriage Wall

KITCHEN & BATH

30" Deluxe Electric Range
17 CF Over/Under Refer
Stainless Steel Sink or Black w/ORB Pullout
Sprayer
Can Lights in Kitchen - VBP
Ceramic Tile Between Range/Range Hood
Staggered Cabinets
60" 1-Piece Fiberglass Oval Drop-In (VBP)
48" or 60" 1-Piece Fiberglass Shower or Tub/
Shower - VBP
60" 1-Piece Fiberglass Tub - Bath 2
ORB Metal Faucets
Elongated China Commode
White China Lavs
Lighted Bath Vents - Eave Vent / Side
Discharge
3 Arm ORB Light Fixture
White Ceramic Tub/Shower Trim
Trimmed Mirrors

ELECTRICAL

200 AMP Service w/30-40 Box
12-2 Copper T/O
Wire for Dryer
Smoke Detectors - All Bedrooms & LR
GFI Recepts - Kitchen, Baths, (2) Exterior
ORB Lantern at Front Door
Exterior Light at Rear Door
1 Phone Jack is Standard

HEATING & PLUMBING

40 Gallon Electric Water Heater
Water Shut-Offs @ All Fixtures
PEX Water Lines
Schedule 40 PVC Drain / Vent Lines
(1) Frost Free Exterior Faucet w/Shut-Off Per
Print
Plumb for Washer - Per Plan
Electric Furnace

CABINETRY

Hardwood Bonsai Cherry Flat Cabinet Doors
1/2" Cabinet End Panels
Hidden Hinges
Countertops – Hi Pressure Laminate w/Self
Edge
4" Laminate Backsplash w/Matching Caulk
30" & 42" Overhead Cabinets -VBP
Hardwood Stiles
Cabinet Cove Trim
Fluted Trim w/Top and Bottom Rosettes at
Sink
Drawers Over Doors - Kitchen
Bank of Drawers - Kitchen
1/2" Adjustable Center Shelf
ORB Cabinet Knobs
Full Length Corner Cabs w/Glass, Fluted Trim,
& Rosettes - VBP
Valance Board at Kitchen Window
Bottom Cabinet Trim
Extendable Drawer Guides

ADDITIONAL

Full Length Drapes – LVR, FR, DR
Decorative Rod in LVR, FR, DR
Valances - All Else
ORB Chandelier
ORB Light Fixtures
Wire Closet Shelving
2" PVC Mini Blinds T/O

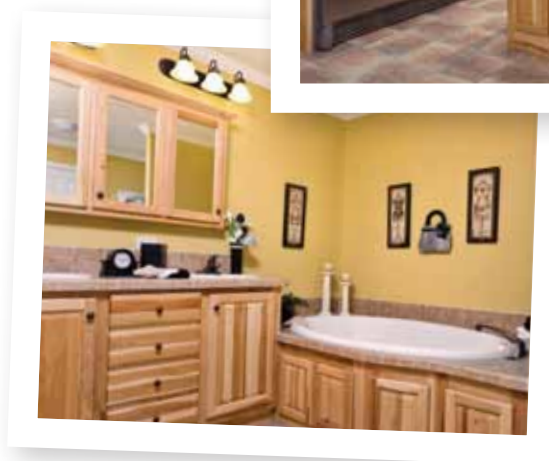
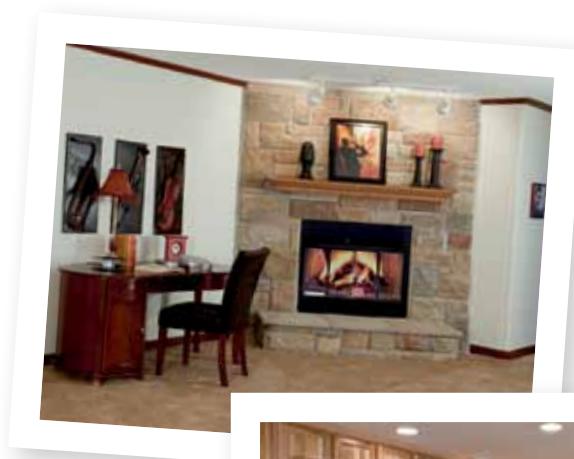
*ORB = Oil Rubbed Bronze

NOTE: Patio Doors and Atrium Doors will no longer contain Grids.

Due to continuous product development and improvement, prices, specifications and material are subject to change without notice or obligation. Square footage and other dimensions are approximate. Included images are artist renderings and are not intended to be an accurate representation of the homes. Renderings and Floor Plans may be shown with optional features and / or third party additions that may not be available in all regions or situations. Exterior Renderings may include onsite builder built options not offered by Champion Home Builders, Inc.



Our strength is in our size. As a part of the Champion Family of Homebuilders, we offer our products at a much more competitive price. Collectively, we bring decades of knowledge and experience to building you that “special home,” and the financial strength to deliver lasting value and peace of mind. Individually, we build homes designed for your hometown and your neighborhood - with the flexibility that makes it your own.



308 Sheridan Drive | Topeka, IN 46571 | T: 800-777-6637 | F: 260-593-2401

WWW.REDMANHOMESOFINDIANA.COM