

GENESIS

HOMES

Build Better. Build Faster.

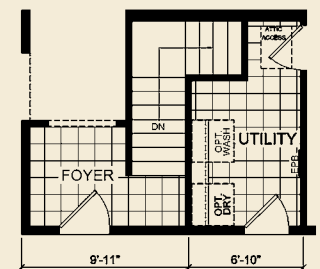
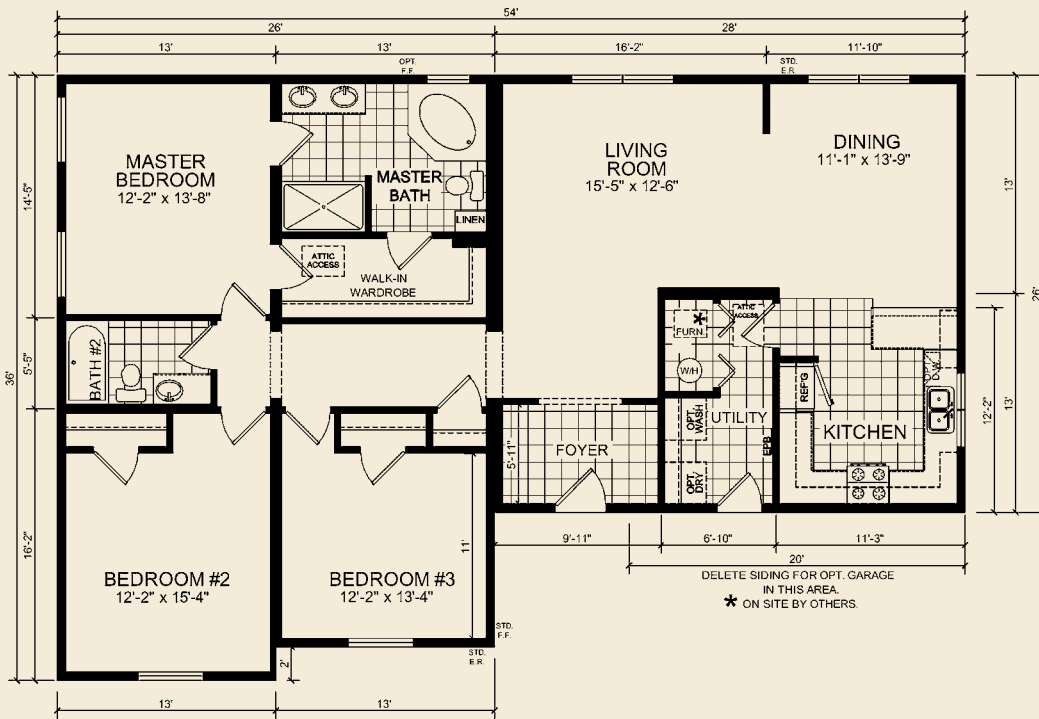


RM 4003



The Charleston

36' x 54' Ranch
 1638 Total Sq. Ft.
 3 Bedrooms / 2 Baths



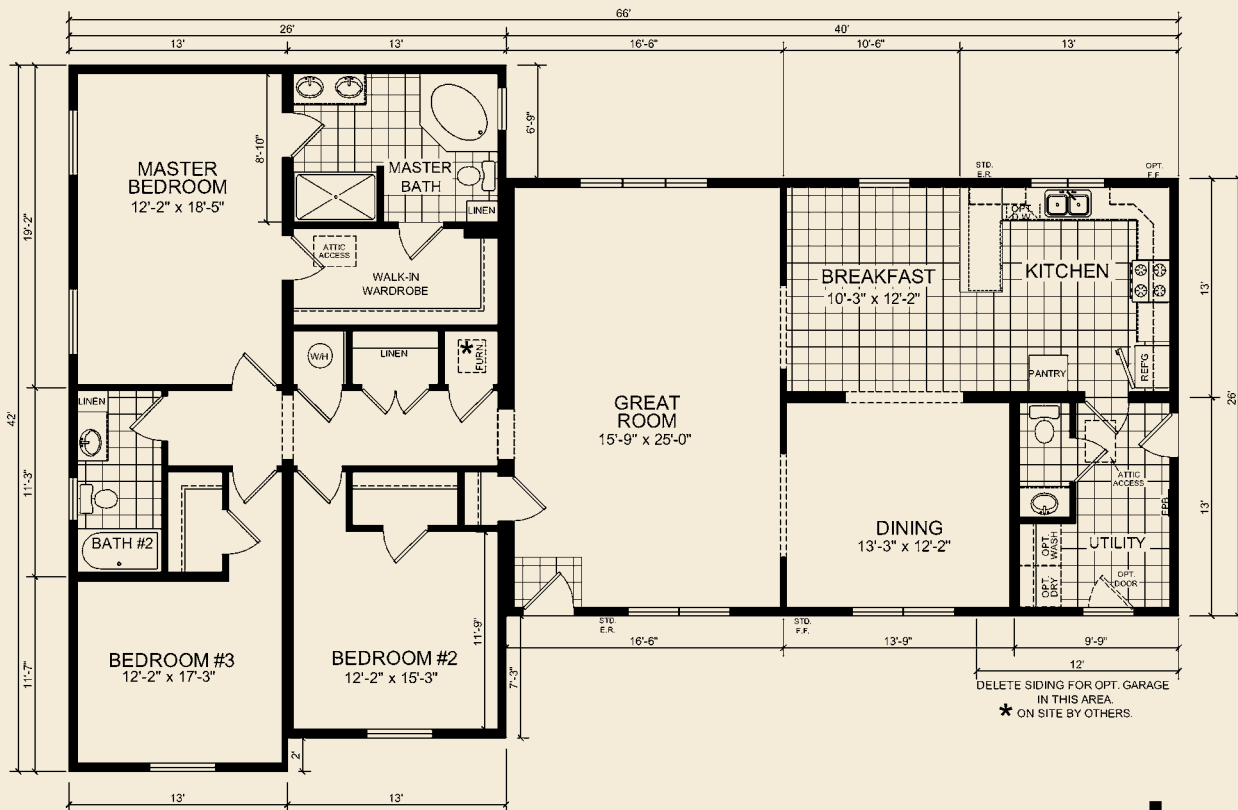
OPTIONAL BASEMENT



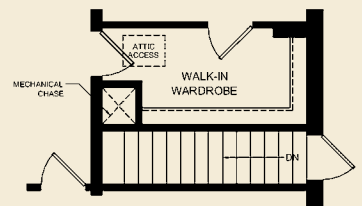
RM 4005

The Delmont

42' x 66' Ranch
 2106 Total Sq. Ft.
 3 Bedrooms / 2 Baths



DELETE SIDING FOR OPT. GARAGE IN THIS AREA.
 * ON SITE BY OTHERS.



OPTIONAL BASEMENT
 * (NO W/IN WITH BASEMENT OPTION)

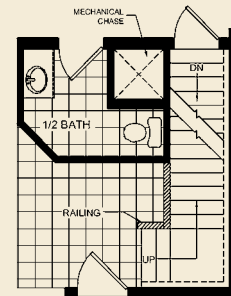
*FURNACE, WARM AND RETURN AIR DUCTS ARE NOT AVAILABLE ON THIS MODEL. INSTALLED ON SITE BY OTHERS.

RM 2007

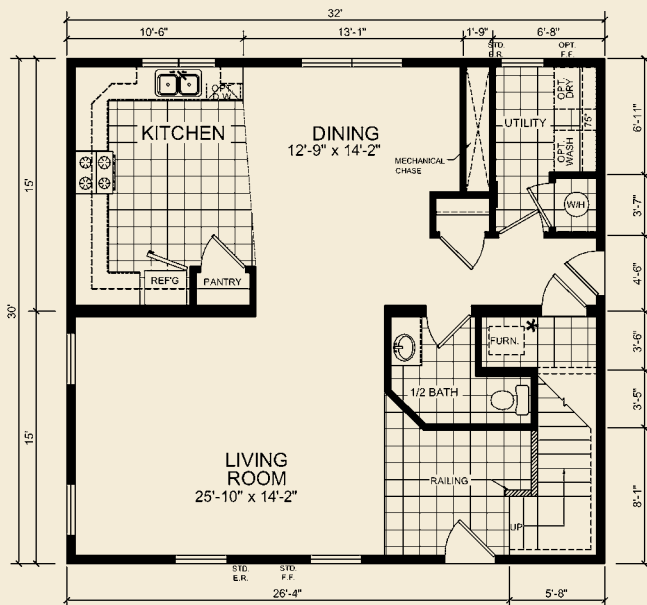


The Bristow

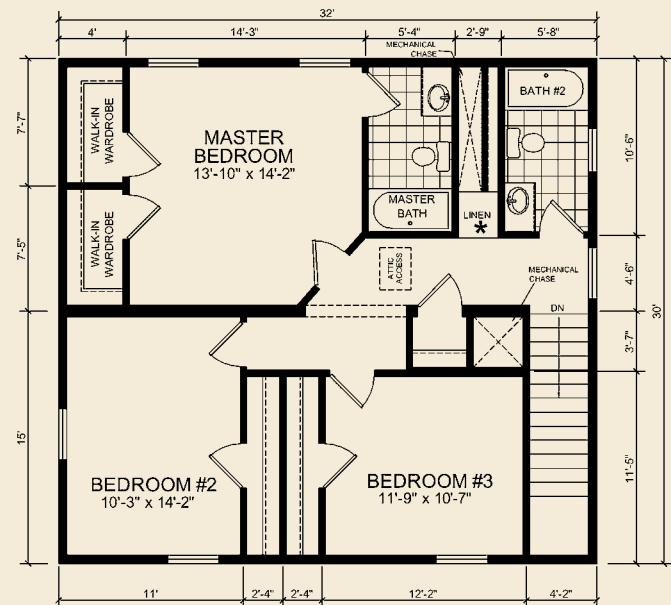
30' x 32' 2-Story
 960 Sq. Ft. Lower Level
 960 Sq. Ft. Upper Level
 1920 Total Sq. Ft.
 3 Bedrooms / 2½ Baths



OPTIONAL BASEMENT



1ST FLOOR



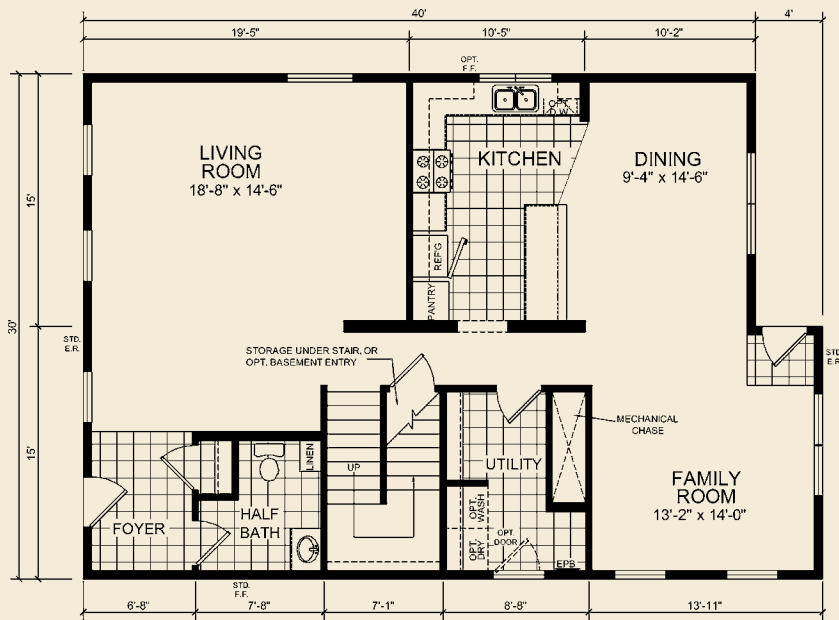
2nd FLOOR



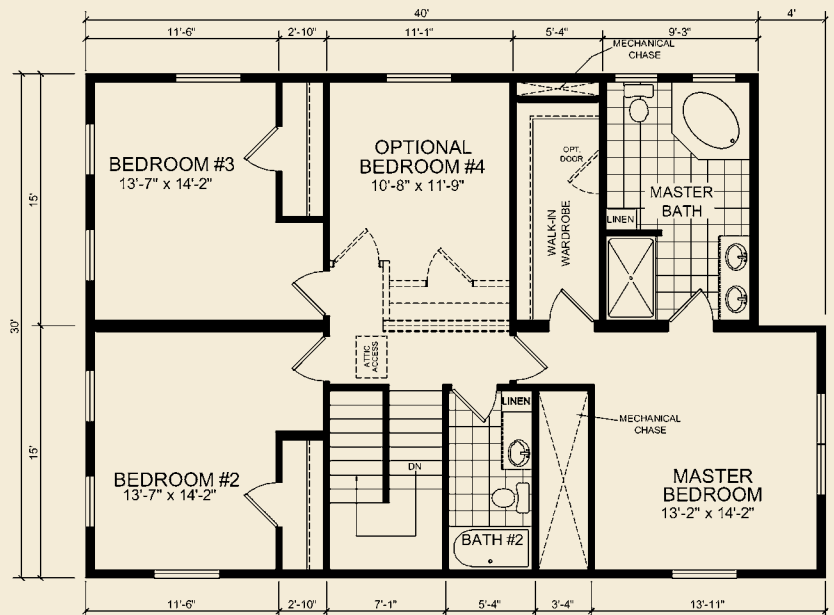
RM 2001

The Fitzgerald

30' x 40/44' 2-Story
 1260 Sq. Ft. Lower Level
 1260 Sq. Ft. Upper Level
 2520 Total Sq. Ft.
 3 Bedrooms / 2½ Baths



1ST FLOOR



2nd FLOOR

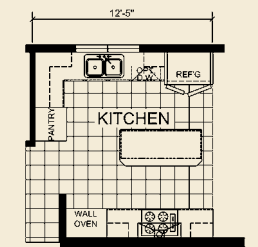
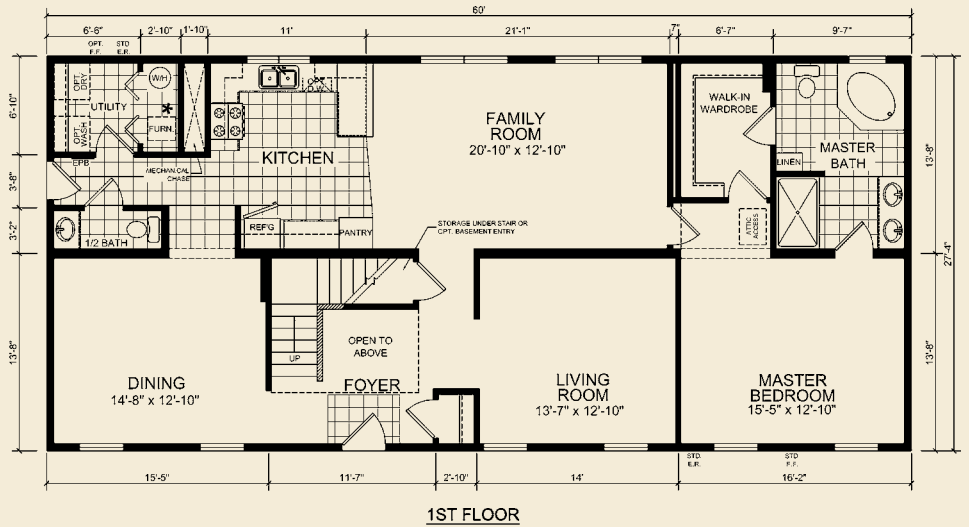
*FURNACE, WARM AND RETURN AIR DUCTS ARE NOT AVAILABLE ON THIS MODEL. INSTALLED ON SITE BY OTHERS.

RM 2005

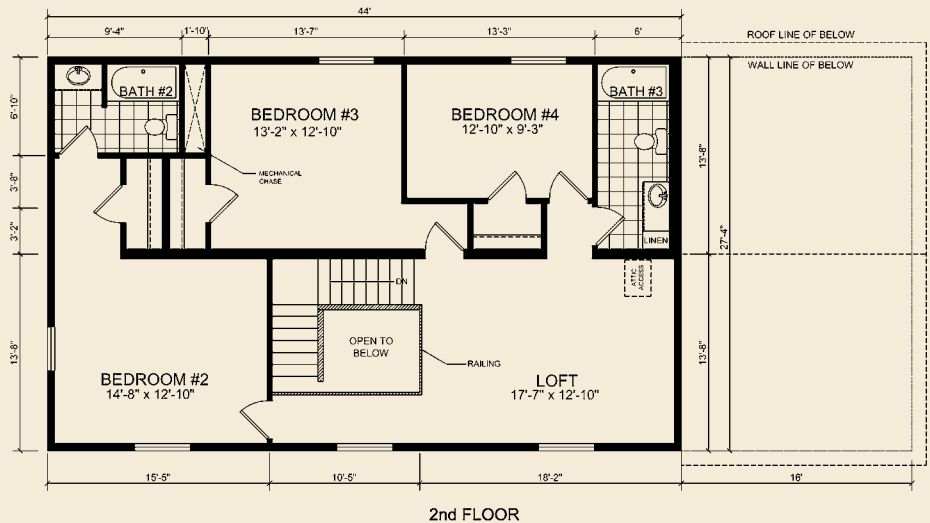


The Ashville

28' x 60' 2-Story
 1640 Sq. Ft. Lower Level
 1202 Sq. Ft. Upper Level
 2842 Total Sq. Ft.
 4 Bedrooms / 3½ Baths



OPTIONAL ULTIMATE KITCHEN

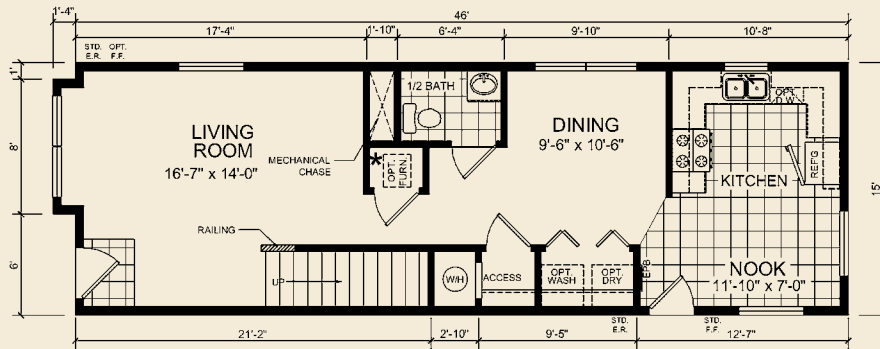




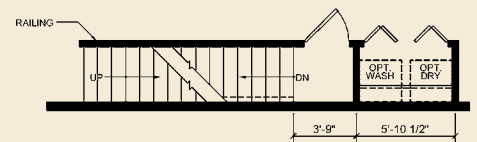
RM 9003

The Roanoke

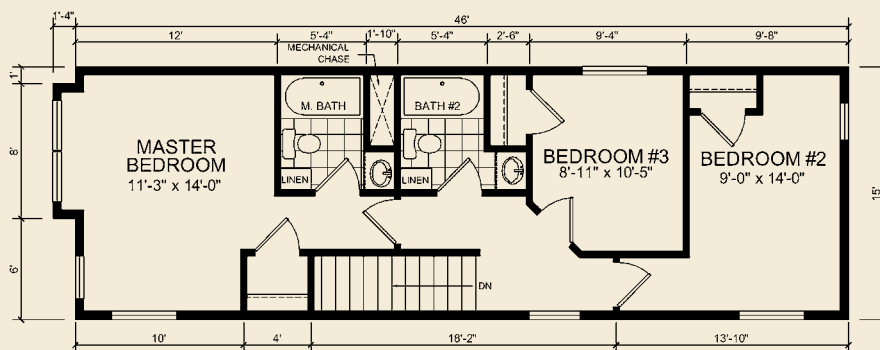
15' x 46' 2-Story
 700 Sq. Ft. Main Floor
 700 Sq. Ft. Second Floor
 1400 Total Sq. Ft.
 3 Bedrooms / 2½ Baths



MAIN FLOOR



*** OPTIONAL BASEMENT**



SECOND FLOOR

*FURNACE IS OPTIONAL . RETURN AIR DUCT ON SITE BY OTHERS.

RM 9005



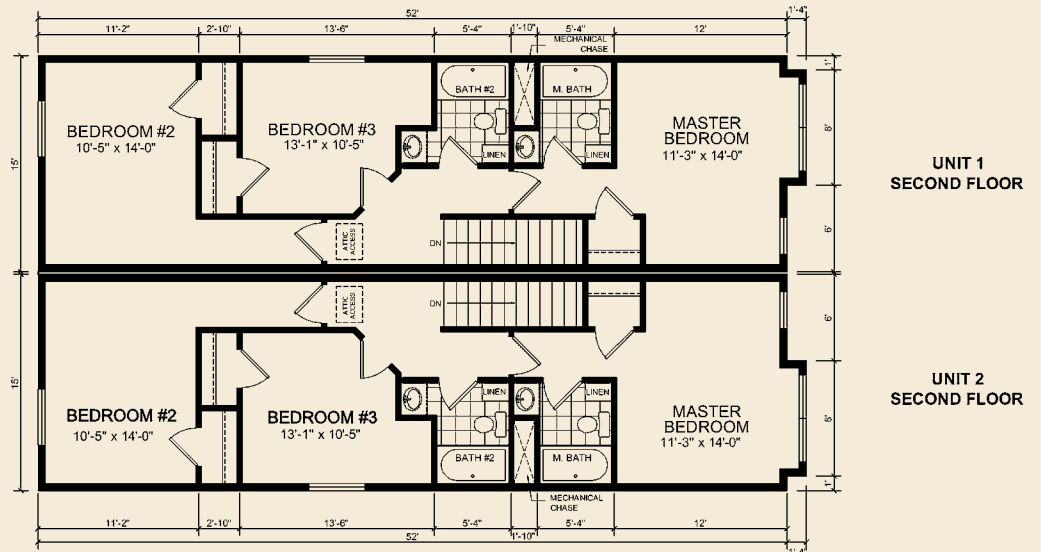
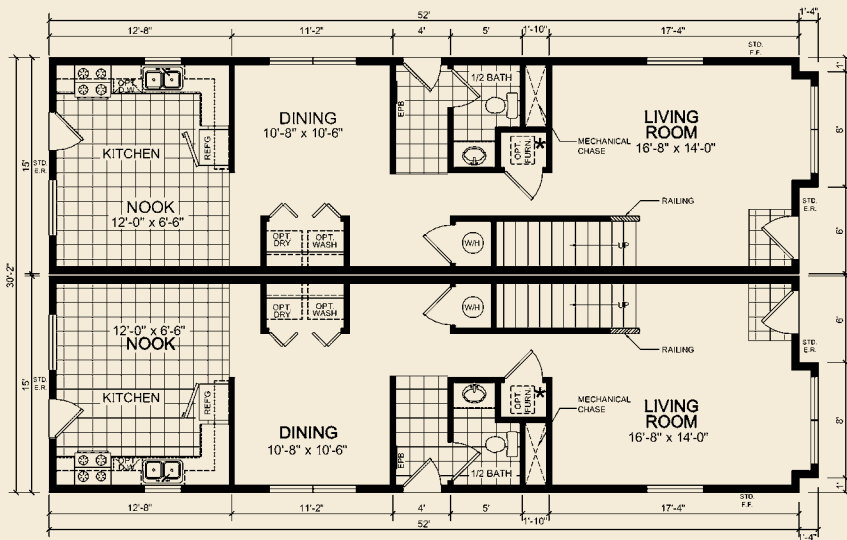
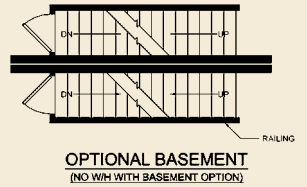
The Arlington

30' x 52' 2-Story Duplex

1590 Total Sq. Ft. Per Unit

3 Bedrooms / 2½ Baths Per Unit

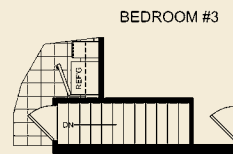
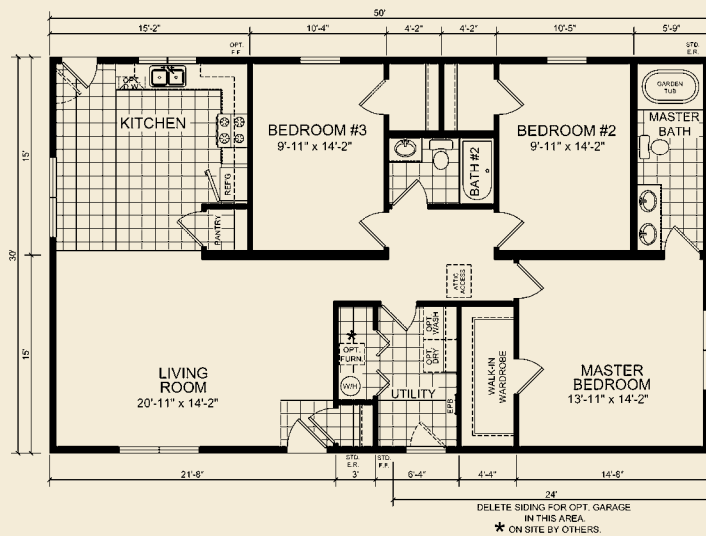
* OPTIONAL BASEMENT





RM 1013

The Applewood

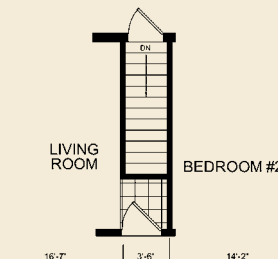
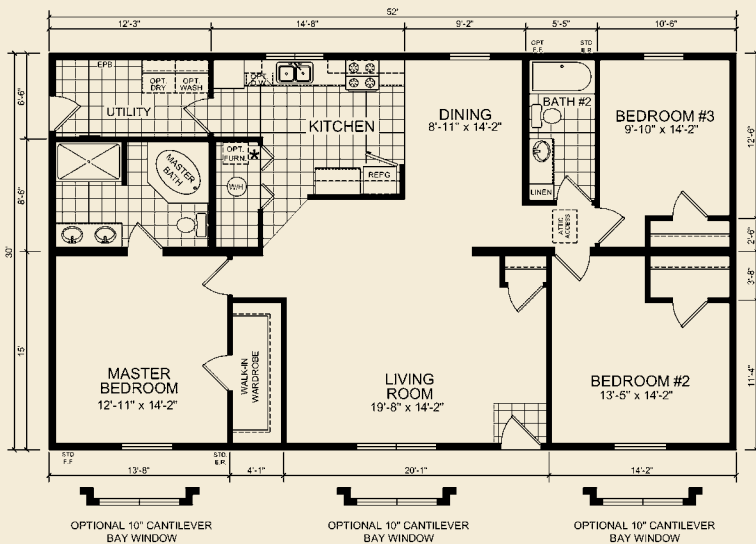


OPTIONAL STAIRWELL

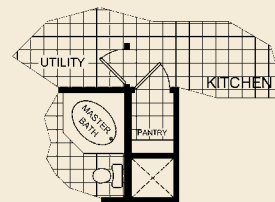
30' x 50' Ranch
1500 Total Sq. Ft.
3 Bedrooms / 2 Baths

*FURNACE OPTION INCLUDES WARM AIR DUCTS IN THE FLOOR AND RETURN AIR DUCTS IN THE CEILING.
* ON SITE BY OTHERS.

The Grandview



OPTIONAL STAIRWELL
* (WARM AIR DUCT SHIPPED LOOSE WITH OPT)



OPTIONAL MECHANICAL CHASE
* (FURNACE & WH ON-SITE BY OTHERS)

RM 1015

30' x 52' Ranch
1560 Total Sq. Ft.
3 Bedrooms / 2 Baths

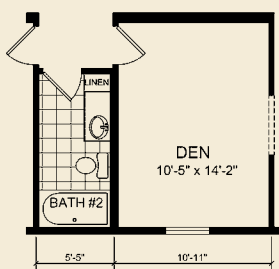
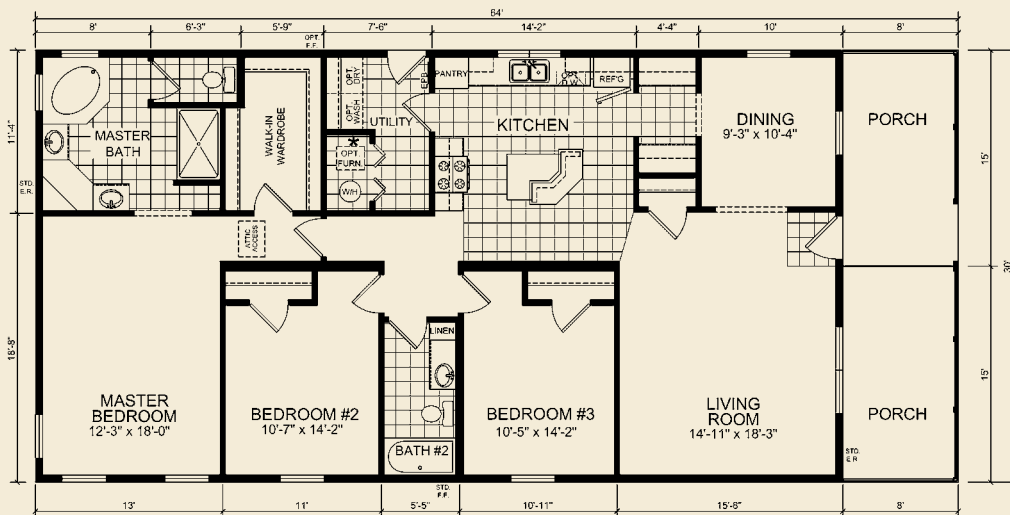
*FURNACE OPTION INCLUDES WARM AIR DUCTS IN THE FLOOR AND RETURN AIR DUCTS IN THE CEILING.



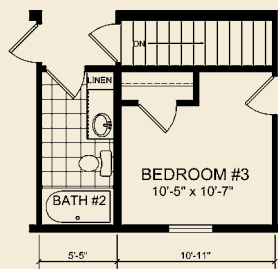
RM 1027

The Milford

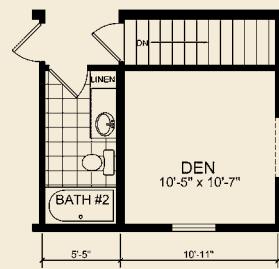
30' x 64' Ranch
 1680 Total Sq. Ft.
 3 Bedrooms / 2 Baths



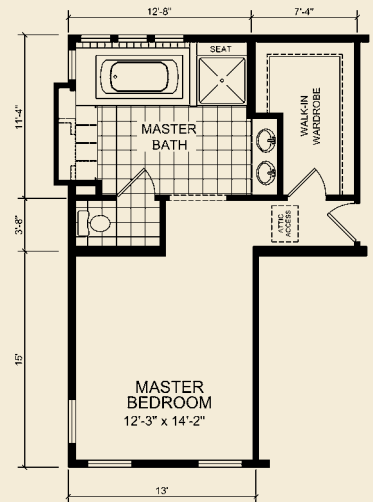
OPTIONAL DEN



OPTIONAL STAIRWELL



OPTIONAL DEN W/ STAIRWELL



OPTIONAL SUITE RETREAT

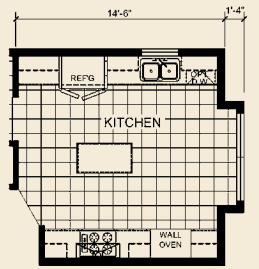
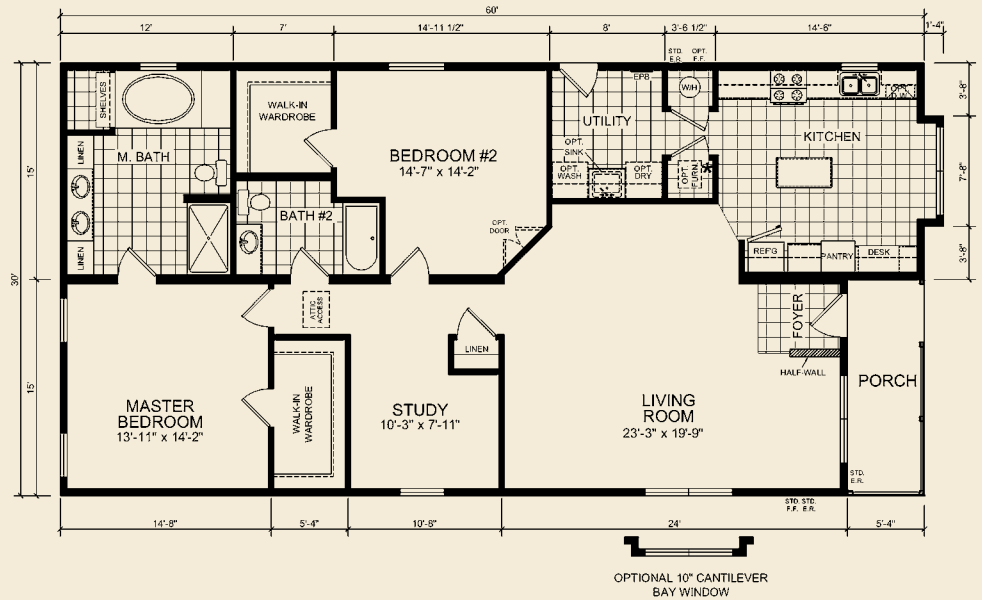
*FURNACE OPTION INCLUDES WARM AIR DUCTS IN THE FLOOR AND RETURN AIR DUCTS IN THE CEILING.

RM 1001

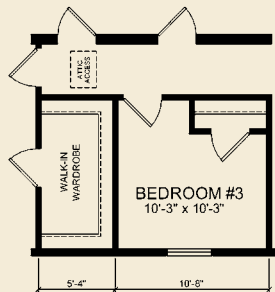


The Crystal

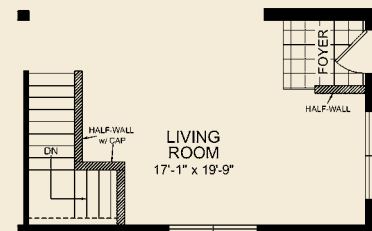
RM 1001
 30' x 60' Ranch
 1730 Total Sq. Ft.
 2 Bedrooms / 2 Baths



OPTIONAL ULTIMATE KITCHEN

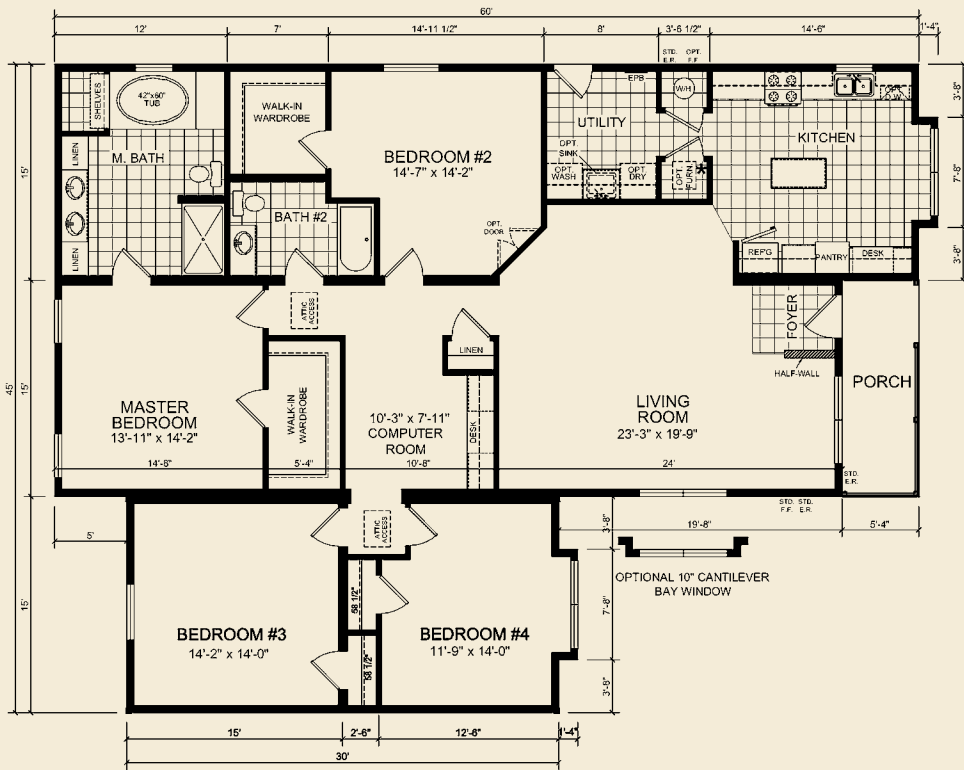


OPTIONAL BEDROOM #3



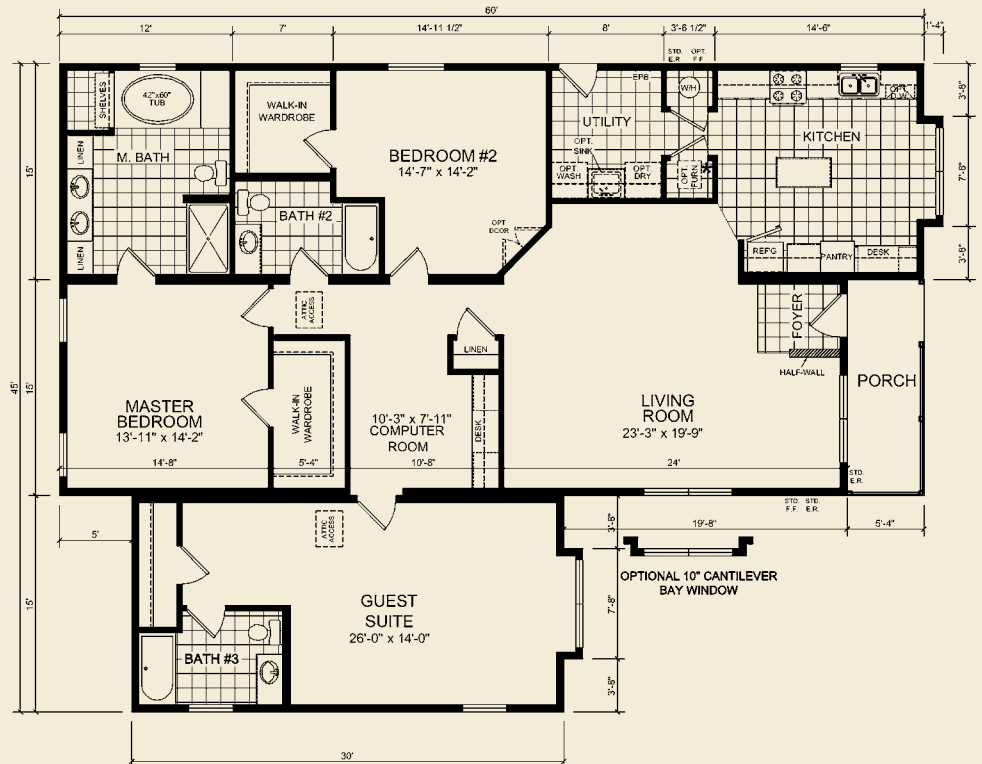
OPTIONAL BASEMENT

*FURNACE OPTION INCLUDES WARM AIR DUCTS IN THE FLOOR AND RETURN AIR DUCTS IN THE CEILING. OPTIONAL WARM AIR DUCT SHIPPED LOOSE W/OPTIONAL BASEMENT, AND ALL POD SECTION OPTIONS.



RM 1001-1
45' x 60' Ranch
2190 Total Sq. Ft.
4 Bedrooms / 2 Baths

RM 1001-2
45' x 60' Ranch
2190 Total Sq. Ft.
3 Bedrooms / 3 Baths



**The Crystal
RM 1001**

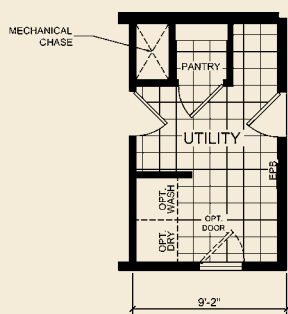
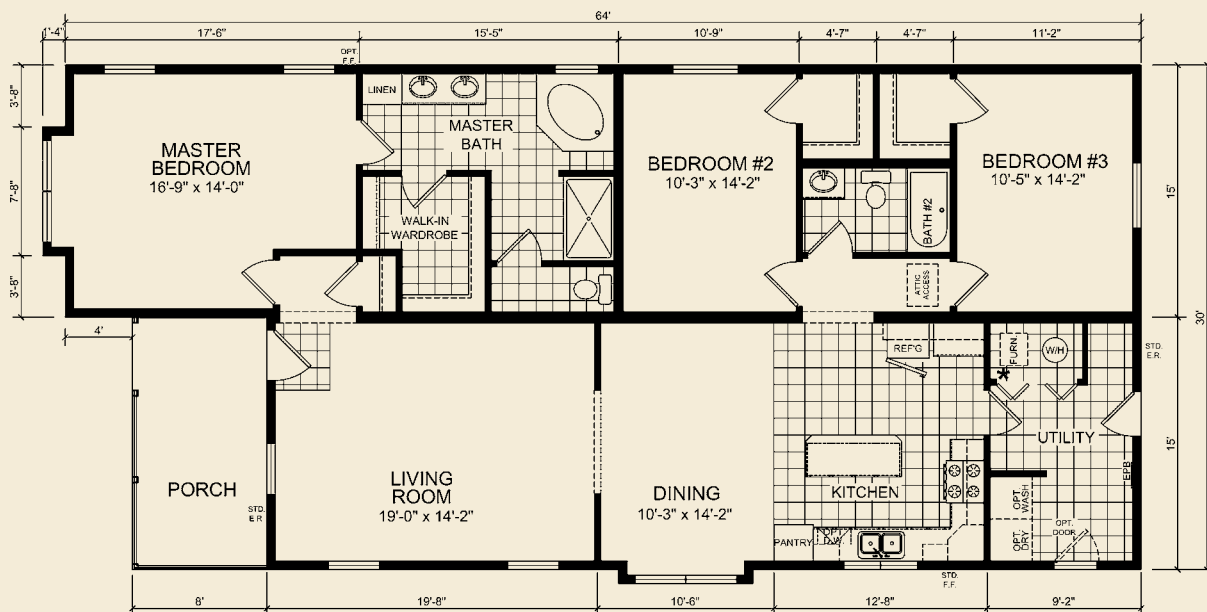




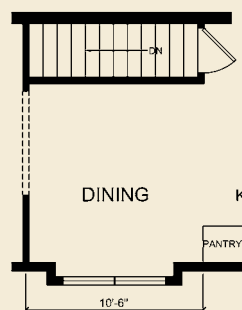
RM 1023

The Dawson

30' x 64' Ranch
 1754 Total Sq. Ft.
 3 Bedrooms / 2 Baths



OPTIONAL MECHANICAL CHASE
 * (FURNACE & W/H ON-SITE BY OTHERS)



OPTIONAL STAIRWELL

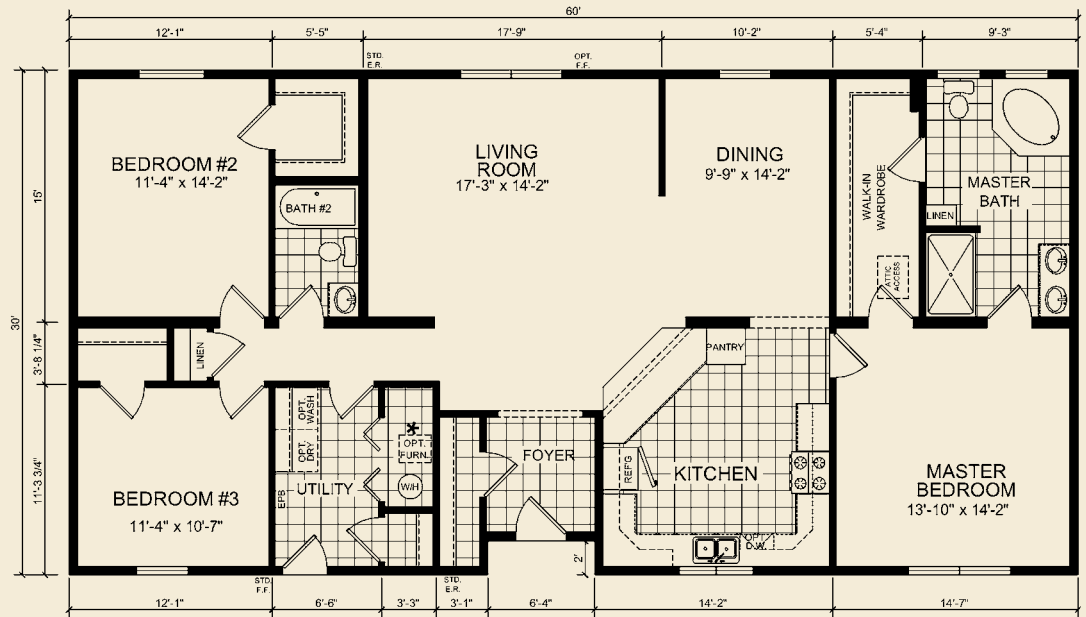
*FURNACE, WARM AND RETURN AIR DUCTS ARE NOT AVAILABLE ON THIS MODEL. INSTALLED ON SITE BY OTHERS.

RM 1025

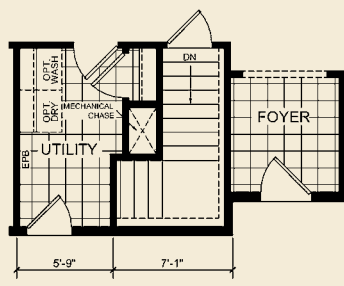


The Milo

30' x 60' Ranch
 1787 Total Sq. Ft.
 3 Bedrooms / 2 Baths



OPTIONAL 10" CANTILEVER BAY WINDOW



OPTIONAL STAIRWELL

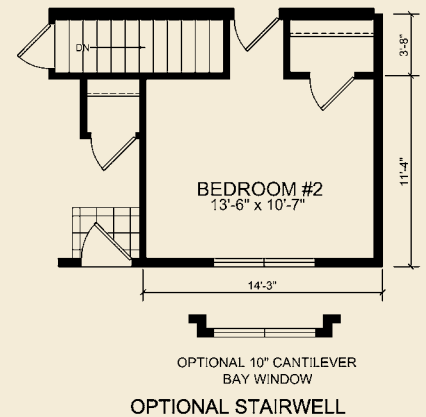
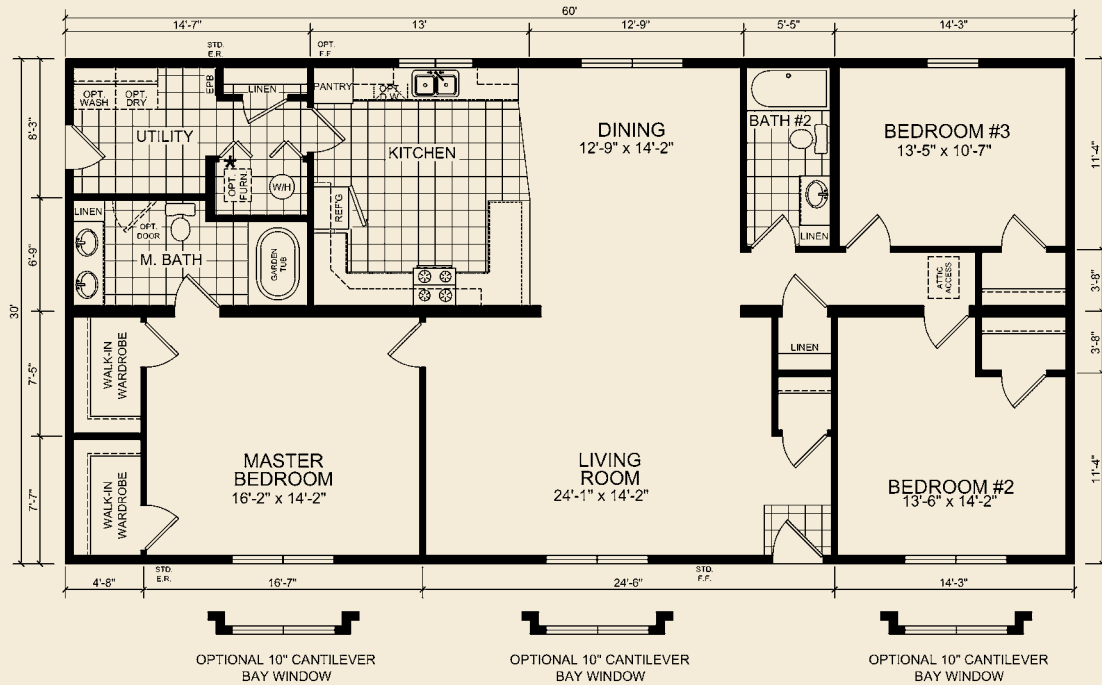
* (FURNACE, WH & WARM AIR DUCTS ON-SITE BY OTHERS)



RM 1009

The Manteno

30' x 60' Ranch
 1800 Total Sq. Ft.
 3 Bedrooms / 2 Baths



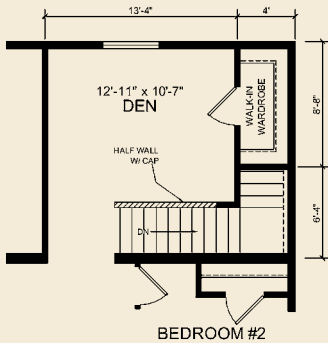
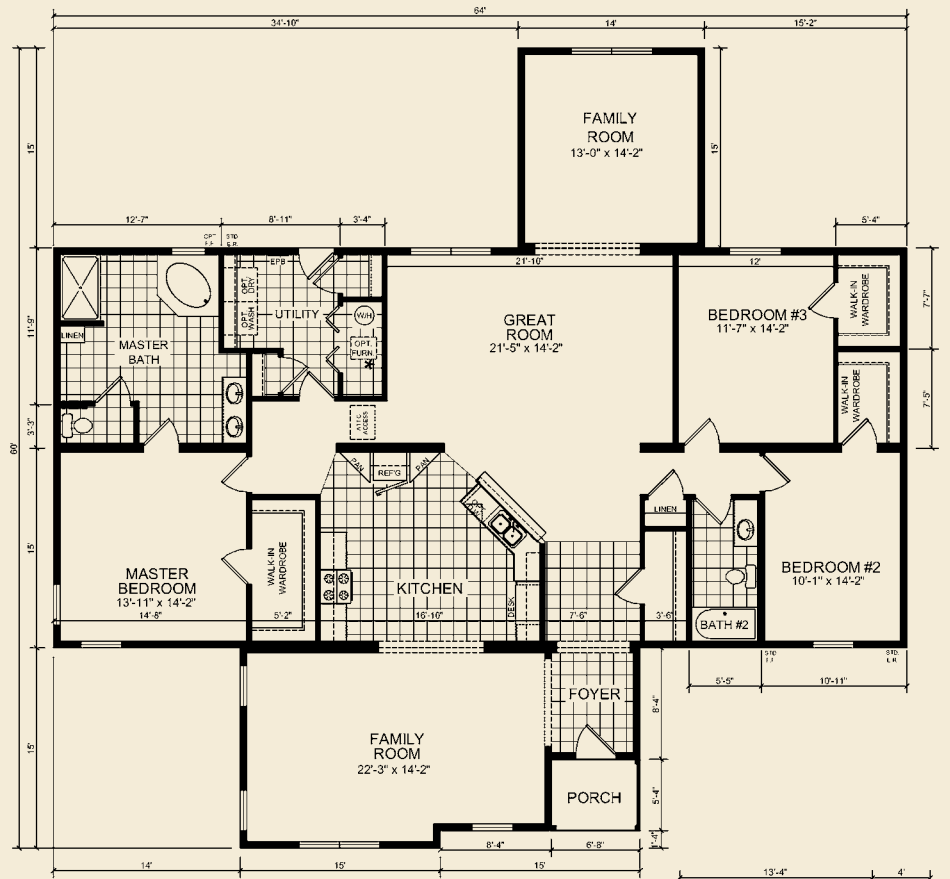
*FURNACE OPTION INCLUDES WARM AIR DUCTS IN THE FLOOR AND RETURN AIR DUCTS IN THE CEILING.

RM 1003

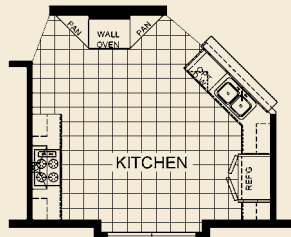


The Woodridge

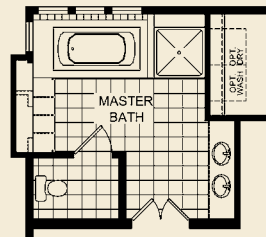
RM 1003-5
 60' x 64' Ranch
 2524 Total Sq. Ft.
 3 Bedrooms / 2 Baths



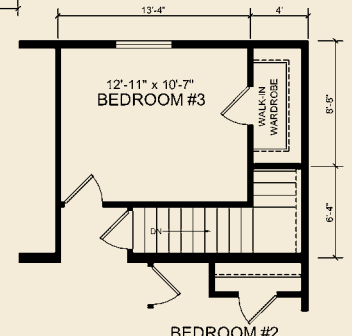
OPTIONAL BASEMENT W/ DEN



OPTIONAL ULTIMATE KITCHEN

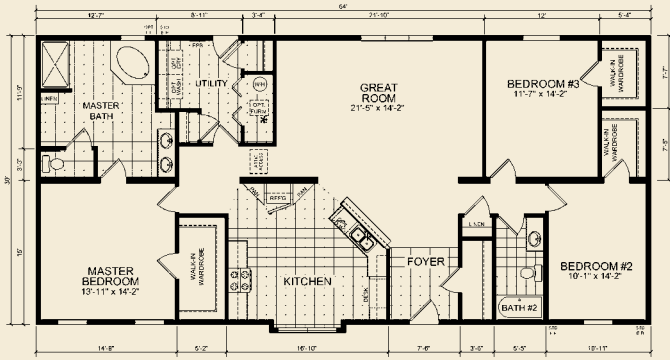


OPTIONAL SUITE RETREAT



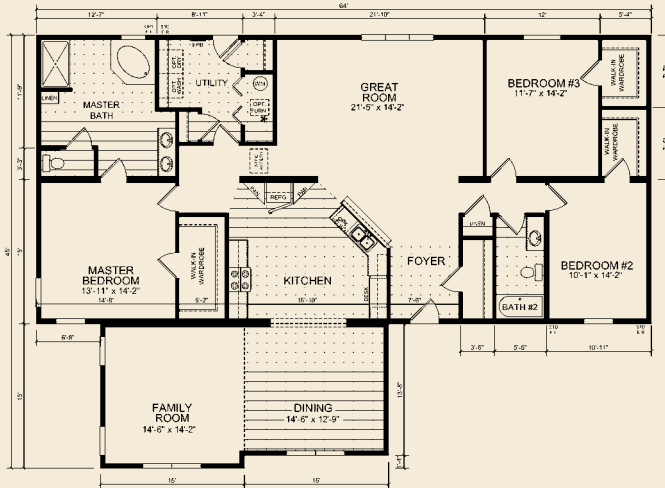
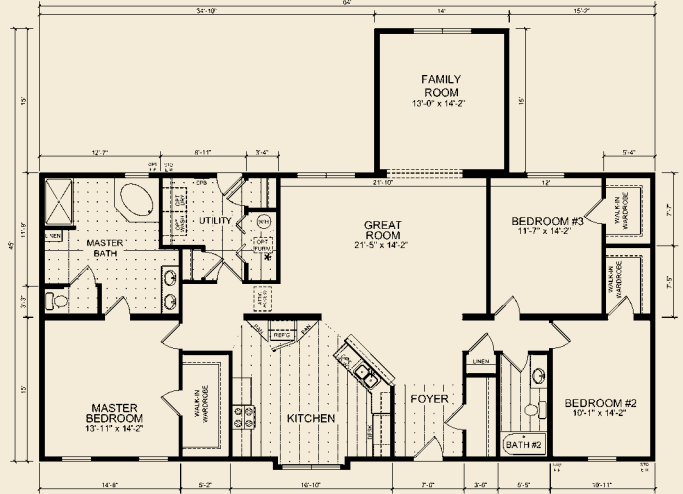
OPTIONAL BASEMENT W/ BEDROOM #3

*FURNACE OPTION INCLUDES WARM AIR DUCTS IN THE FLOOR AND RETURN AIR DUCTS IN THE CEILING. OPTIONAL WARM AIR DUCT SHIPPED LOOSE W/OPTIONAL BASEMENT, AND ALL POD SECTION OPTIONS.

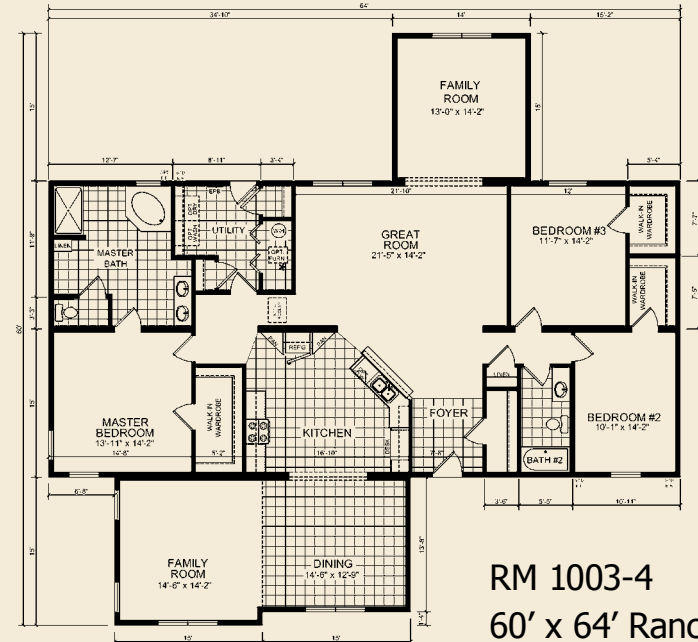


RM 1003
 30' x 64' Ranch
 1920 Total Sq. Ft.
 3 Bedrooms / 2 Baths

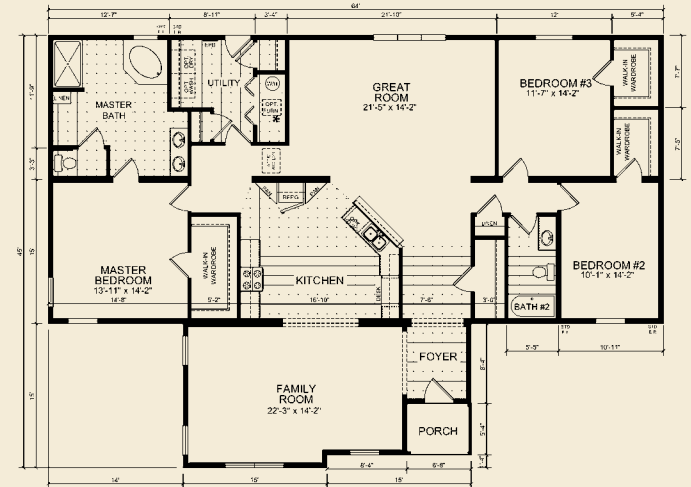
RM 1003-1
 45' x 64' Ranch
 2130 Total Sq. Ft.
 3 Bedrooms / 2 Baths



RM 1003-2
 45' x 64' Ranch
 2350 Total Sq. Ft.
 3 Bedrooms / 2 Baths



RM 1003-3
 45' x 64' Ranch
 2314 Total Sq. Ft.
 3 Bedrooms / 2 Baths



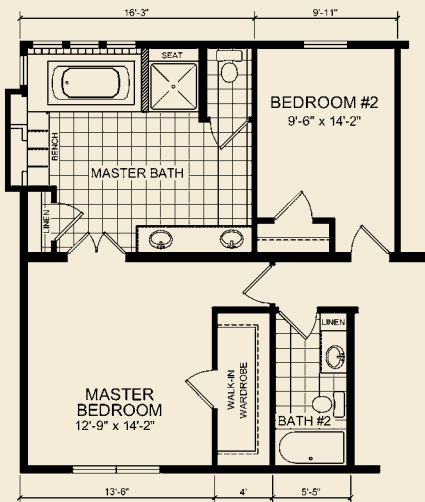
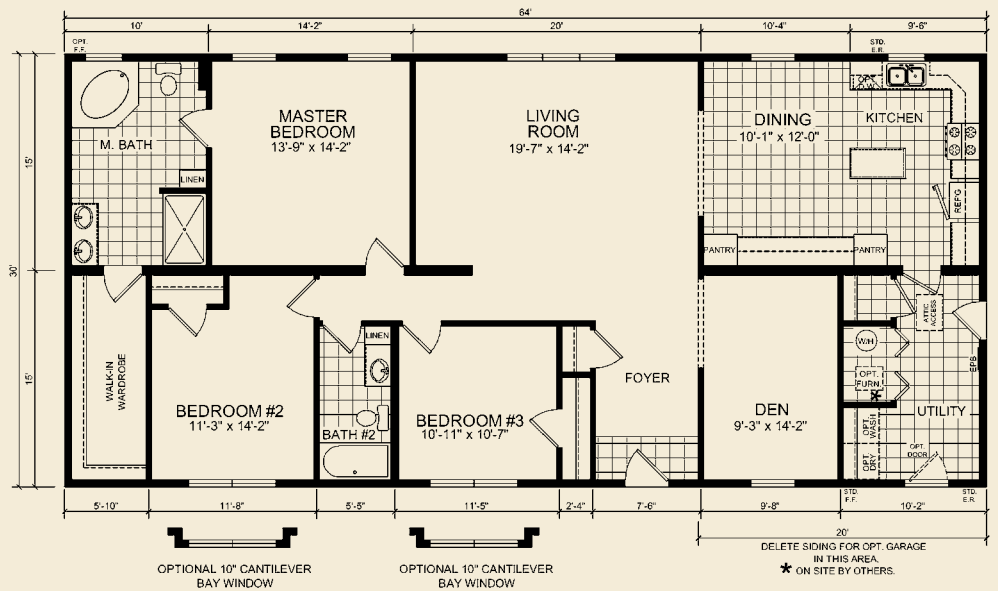
RM 1003-4
 60' x 64' Ranch
 2560 Total Sq. Ft.
 3 Bedrooms / 2 Baths

RM 1005

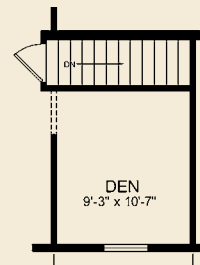
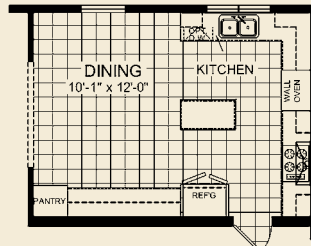


The Foxboro

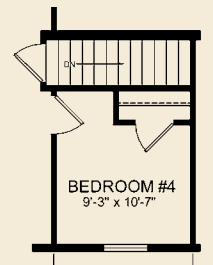
30' x 64' Ranch
 1920 Total Sq. Ft.
 3 Bedrooms / 2 Baths



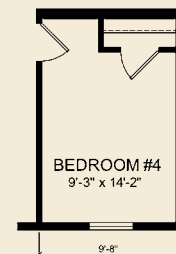
OPTIONAL SUITE RETREAT



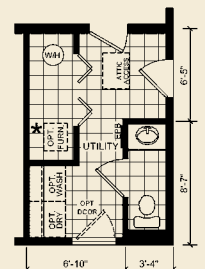
OPTIONAL STAIRWELL



OPTIONAL BEDROOM #4 W/ OPT. STAIRWELL



OPTIONAL BEDROOM #4



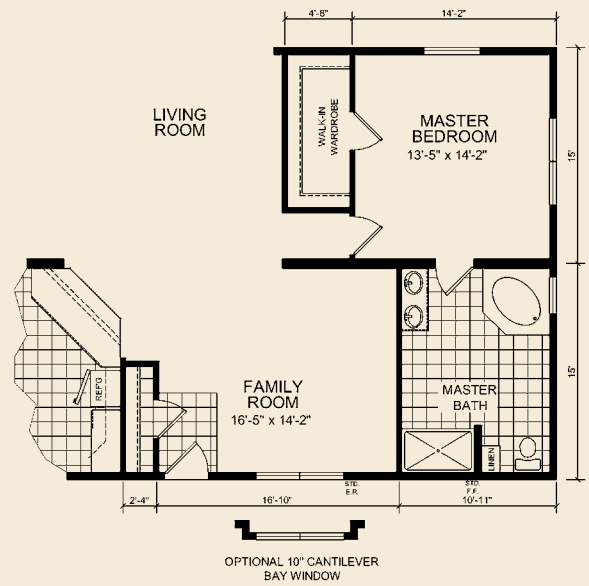
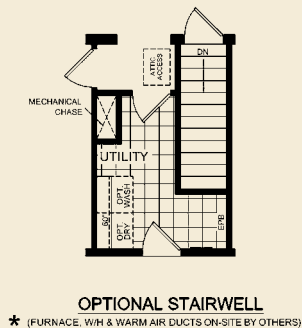
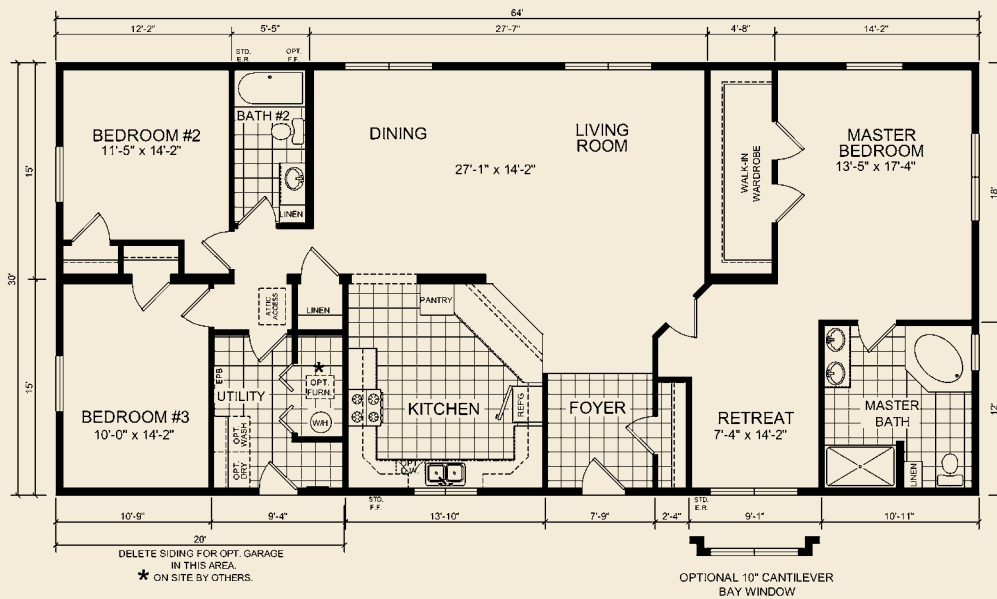
OPTIONAL 1/2 BATH



RM 1019

The Sheridan

30' x 64' Ranch
 1920 Total Sq. Ft.
 3 Bedrooms / 2 Baths



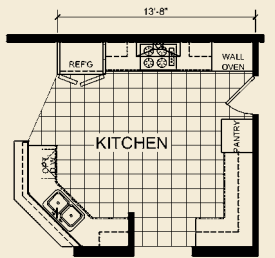
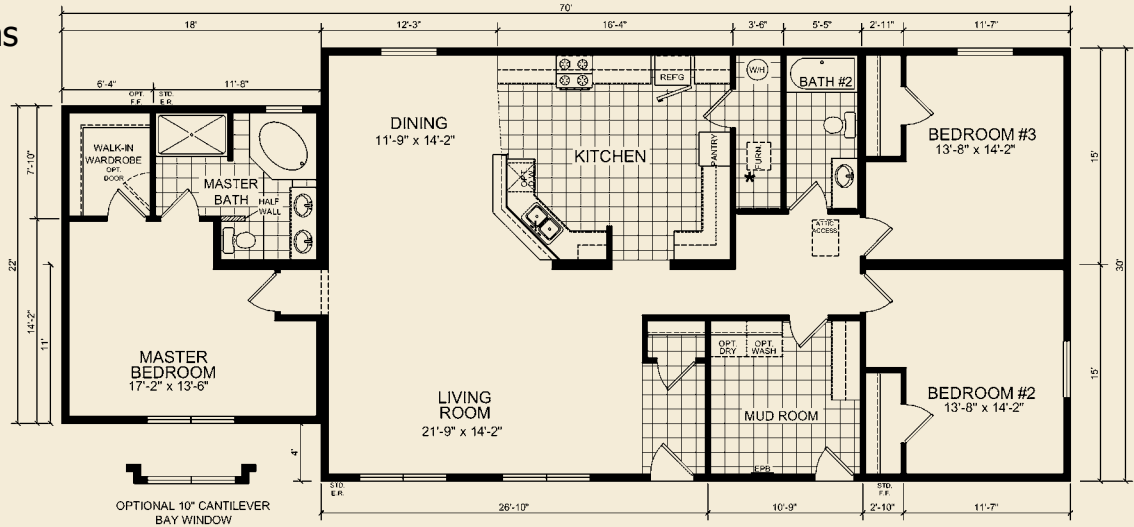
*FURNACE OPTION INCLUDES WARM AIR DUCTS IN THE FLOOR AND RETURN AIR DUCTS IN THE CEILING.

RM 1029

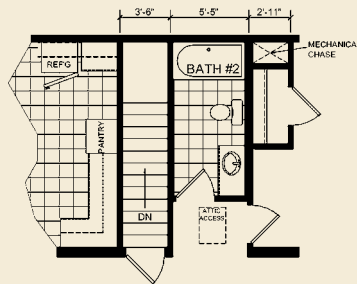


The Laughlin

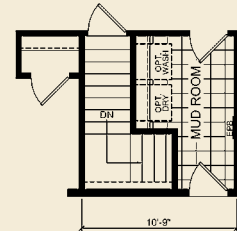
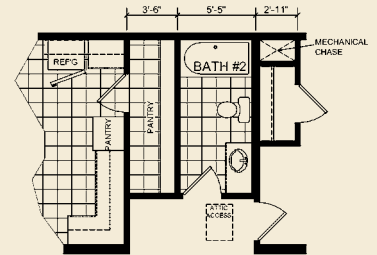
30' x 70' Ranch
 1956 Total Sq. Ft.
 3 Bedrooms / 2 Baths



OPTIONAL ULTIMATE KITCHEN



OPTIONAL BASEMENT #2
 (W/H N/A WITH OPTION)



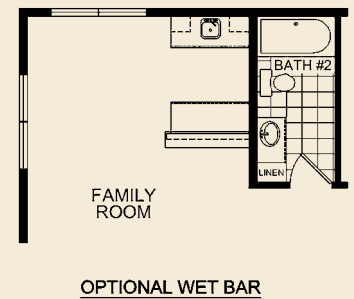
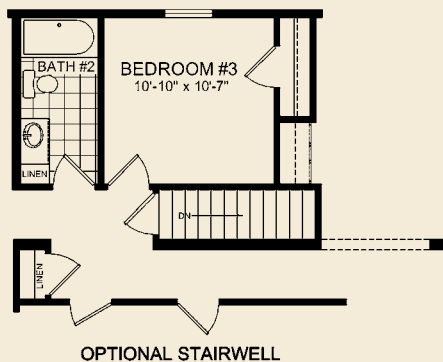
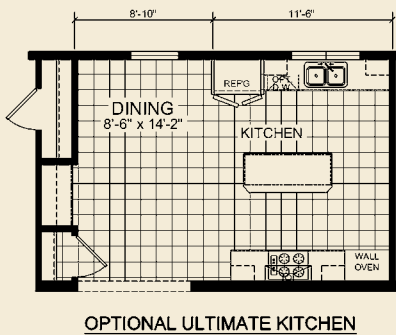
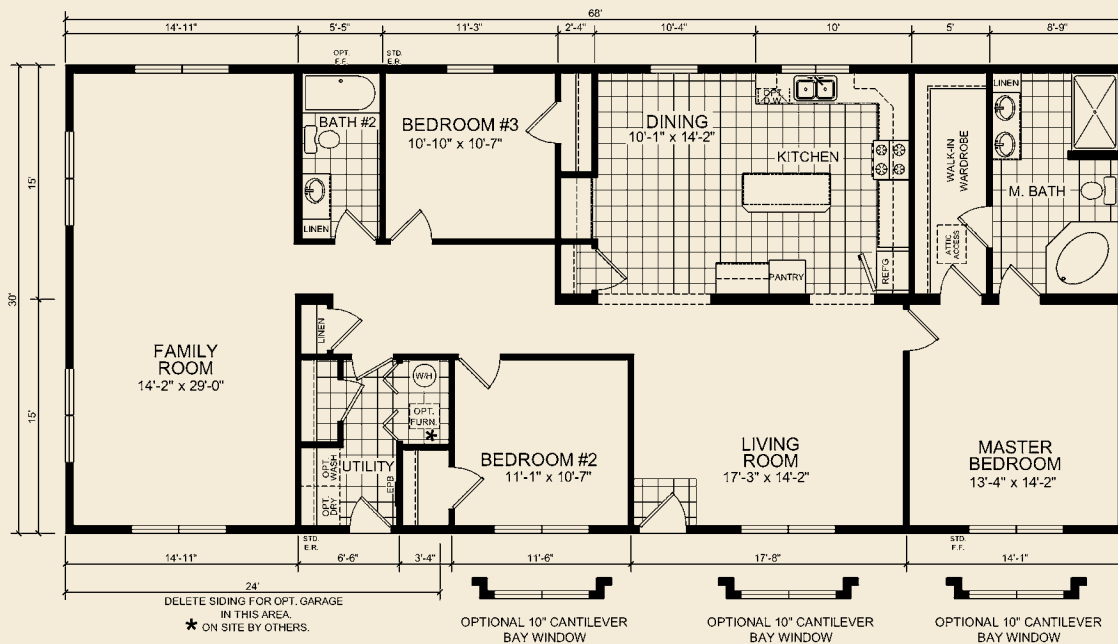
OPTIONAL BASEMENT #1
 (W/H N/A WITH OPTION)



RM 1007

The Deerwood

30' x 68' Ranch
 2040 Total Sq. Ft.
 3 Bedrooms / 2 Baths



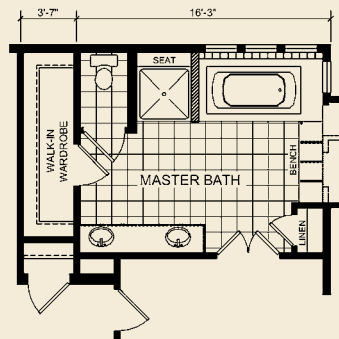
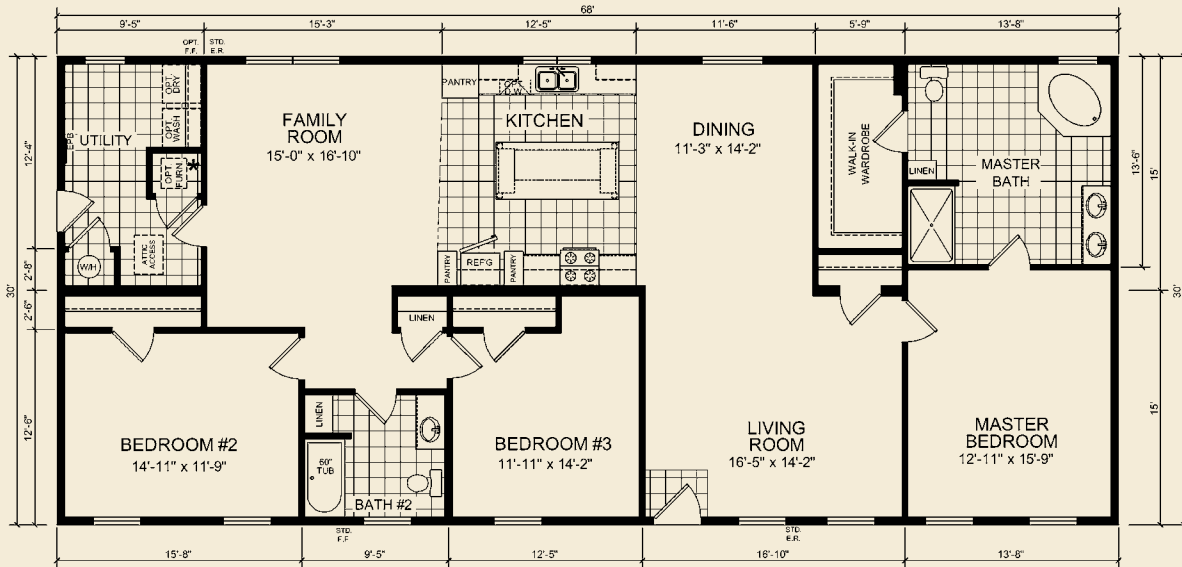
*FURNACE OPTION INCLUDES WARM AIR DUCTS IN THE FLOOR AND RETURN AIR DUCTS IN THE CEILING.

RM 1011

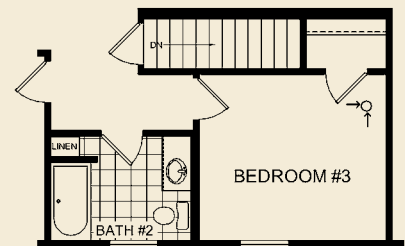


The Greenbriar

30' x 68' Ranch
 2040 Total Sq. Ft.
 3 Bedrooms / 2 Baths



OPTIONAL SUITE RETREAT



OPTIONAL STAIRWELL

RM 1031



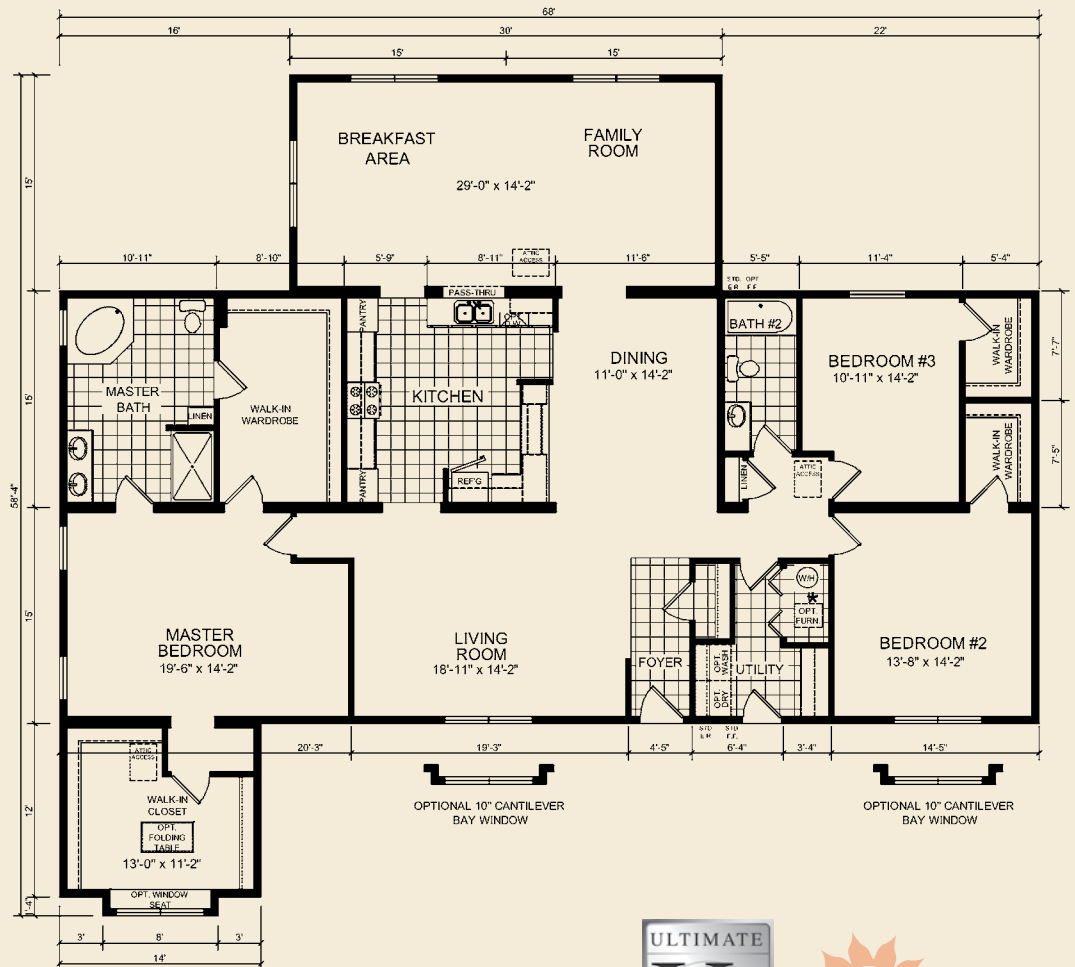
The Hampton

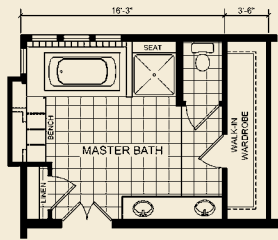
RM 1031-3

58' x 68' Ranch

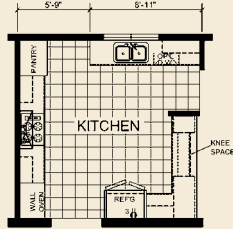
2668 Total Sq. Ft.

3 Bedrooms / 2 Baths

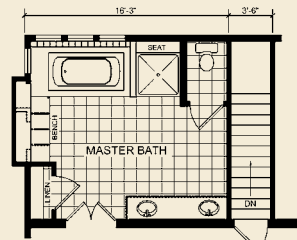




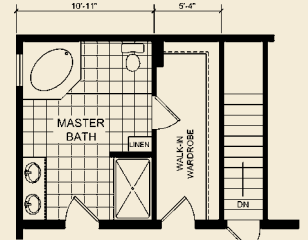
OPTIONAL SUITE RETREAT



OPTIONAL ULTIMATE KITCHEN

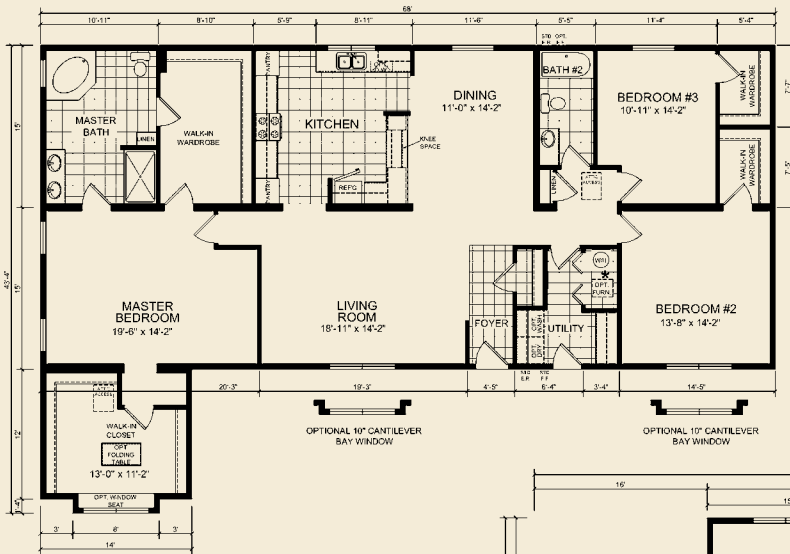
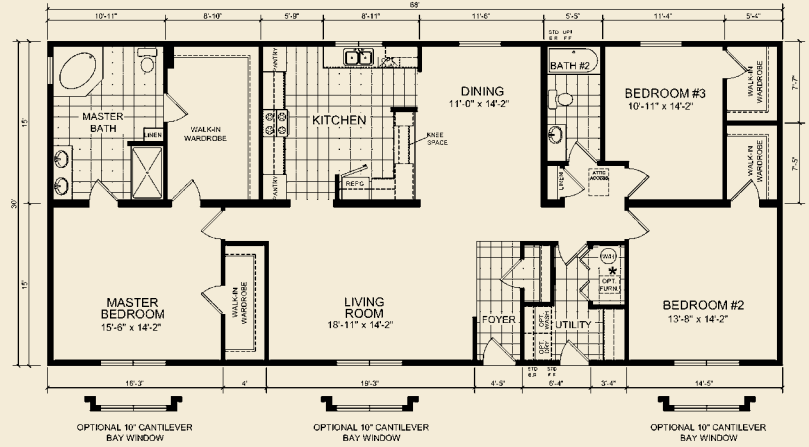


OPTIONAL SUITE RETREAT w/ BASEMENT
 * (WARM AIR DUCTS SHIPPED LOOSE WITH BASEMENT OPTION)



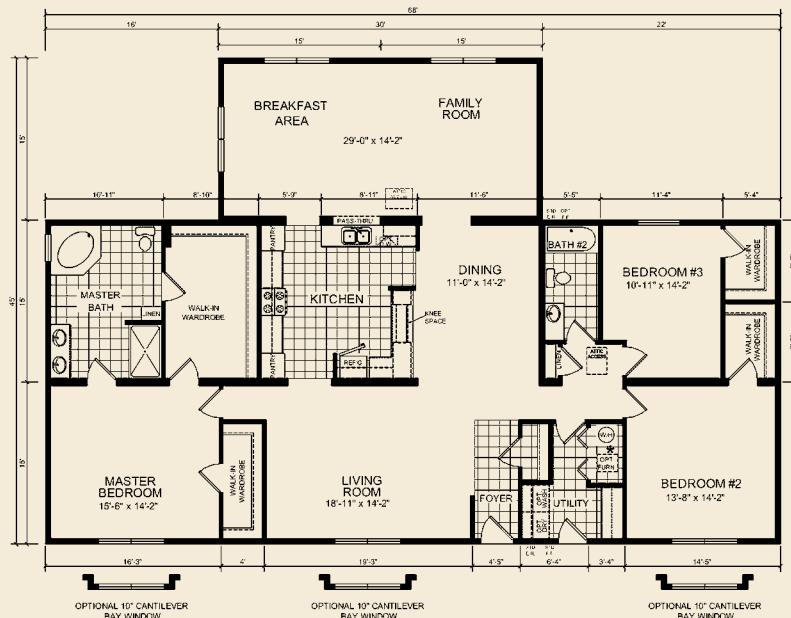
OPTIONAL BASEMENT
 * (WARM AIR DUCTS SHIPPED LOOSE WITH BASEMENT OPTION)

RM 1031
 30' x 68' Ranch
 2040 Total Sq. Ft.
 3 Bedrooms / 2 Baths



RM 1031-1
 42' x 68' Ranch
 2218 Total Sq. Ft.
 3 Bedrooms / 2 Baths

RM 1031-2
 45' x 68' Ranch
 2490 Total Sq. Ft.
 3 Bedrooms / 2 Baths

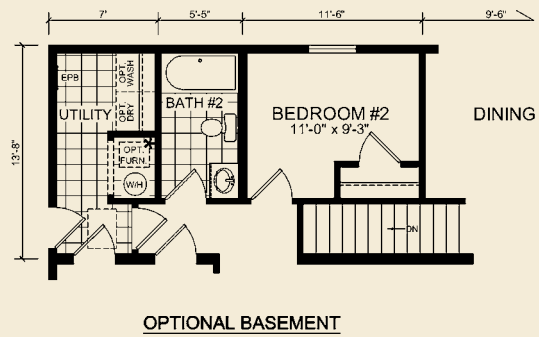
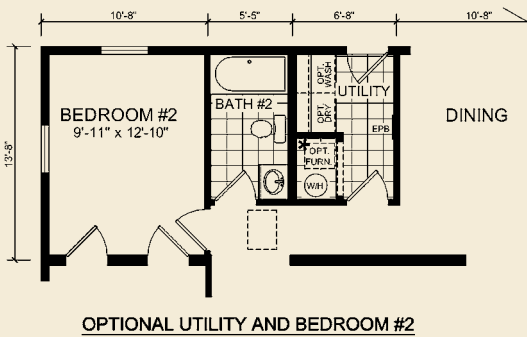
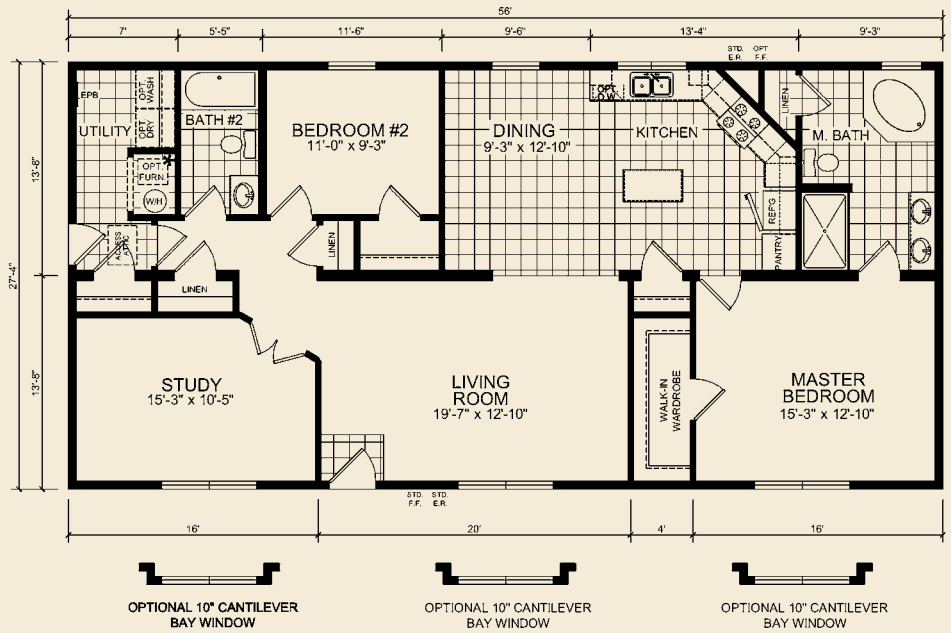


RM 501



The Lyndhurst

28' x 56' Ranch
 1568 Total Sq. Ft.
 3 Bedrooms / 2 Baths

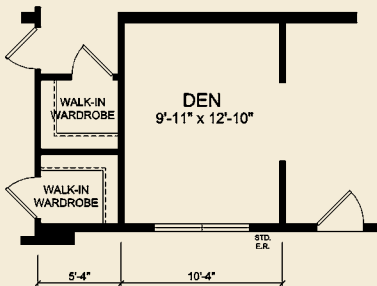
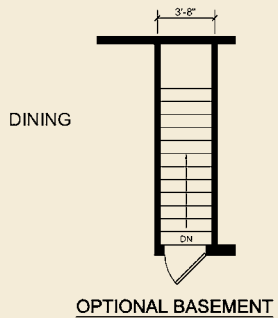
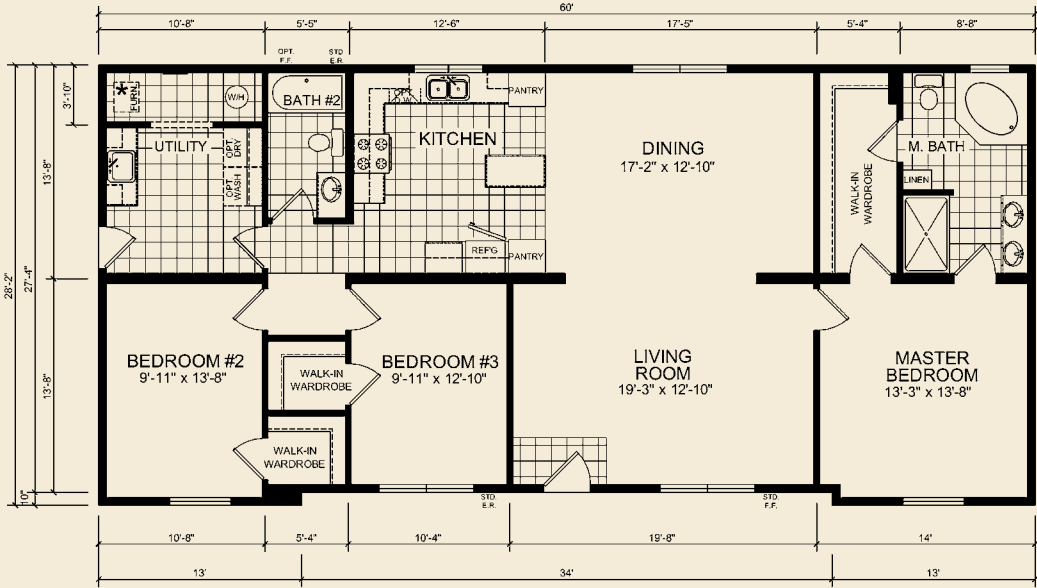




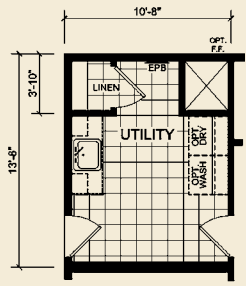
RM 503

The Bradford

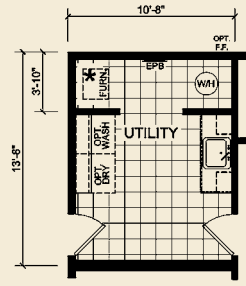
28' x 60' Ranch
 1680 Total Sq. Ft.
 3 Bedrooms / 2 Baths



OPTIONAL DEN



OPTIONAL UTILITY



OPTIONAL UTILITY

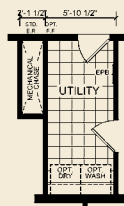
*FURNACE OPTION INCLUDES WARM AIR DUCTS IN THE FLOOR AND RETURN AIR DUCTS IN THE CEILING.

RM 505
RM 505-1

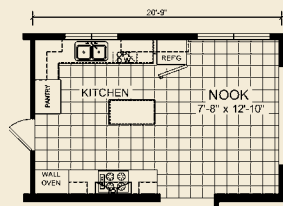


The Garfield

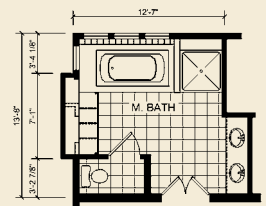
RM 505
28' x 60' Ranch
1680 Total Sq. Ft.
3 Bedrooms / 2 Baths



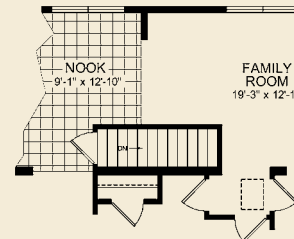
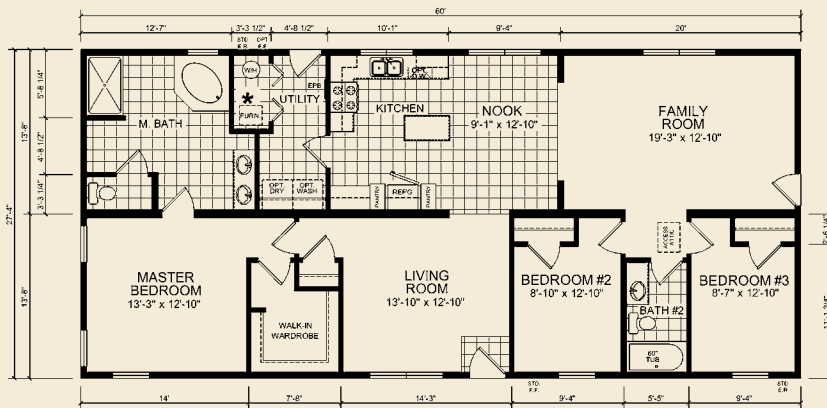
OPTIONAL UTILITY W/ BASEMENT



OPTIONAL ULTIMATE KITCHEN

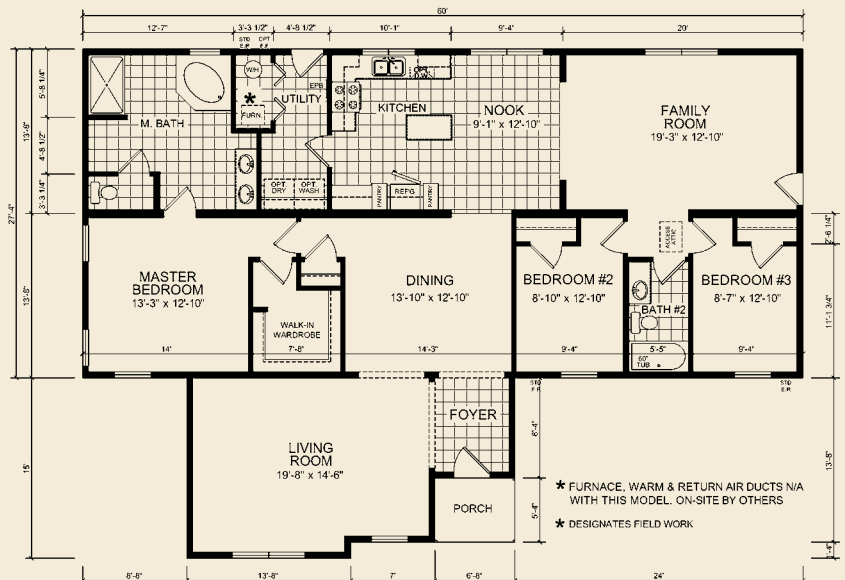


OPTIONAL SUITE RETREAT



OPTIONAL BASEMENT

RM 505-1
42' x 60' Ranch
2520 Total Sq. Ft.
3 Bedrooms / 2 Baths

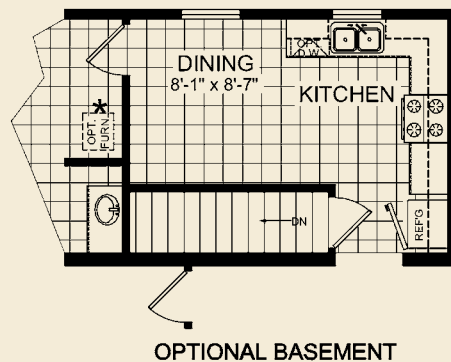
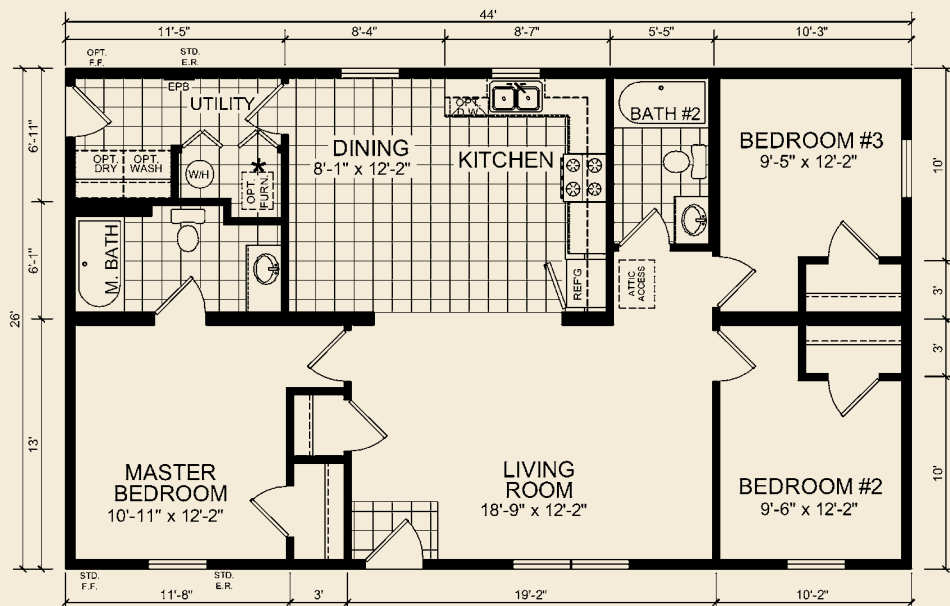


* FURNACE, WARM & RETURN AIR DUCTS N/A WITH THIS MODEL. ON-SITE BY OTHERS
* DESIGNATES FIELD WORK



The Clarion

26' x 44' Ranch
 1144 Total Sq. Ft.
 3 Bedrooms / 2 Baths



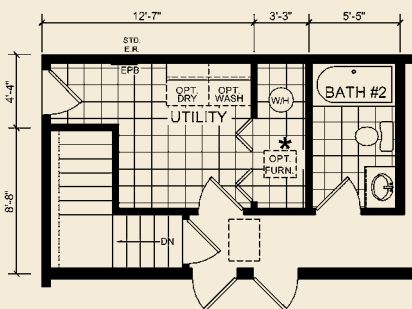
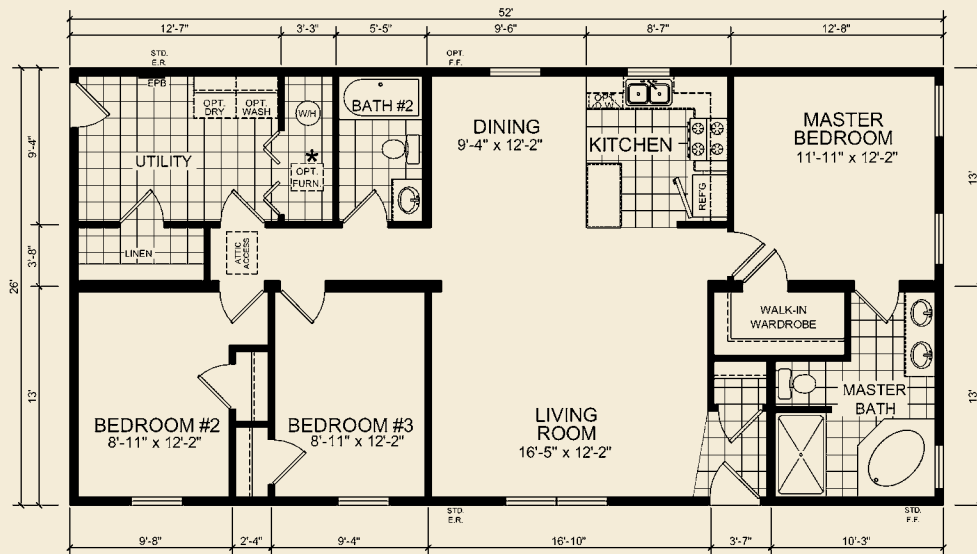
*FURNACE OPTION INCLUDES WARM AIR DUCTS IN THE FLOOR AND RETURN AIR DUCTS IN THE CEILING.



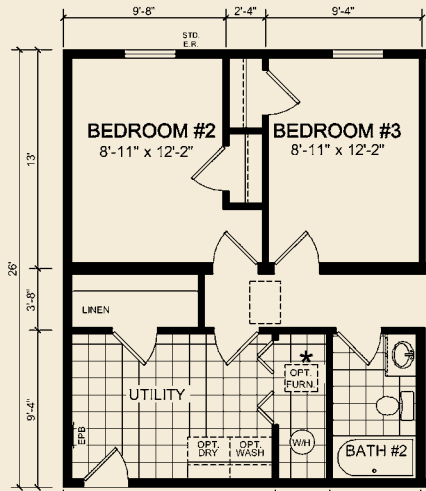
RM 03

The Cedar Brook

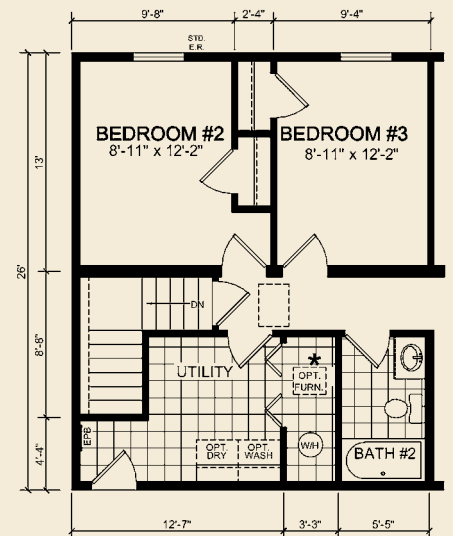
26' x 52' Ranch
1352 Total Sq. Ft.
3 Bedrooms / 2 Baths



OPTIONAL BASEMENT



OPTIONAL FRONT LOAD GARAGE



OPTIONAL BASEMENT WITH FRONT LOAD GARAGE

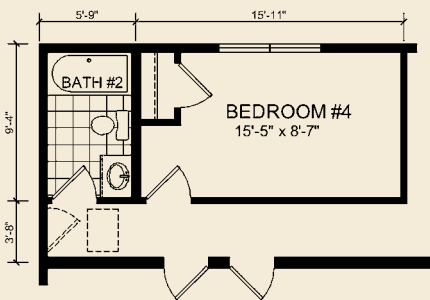
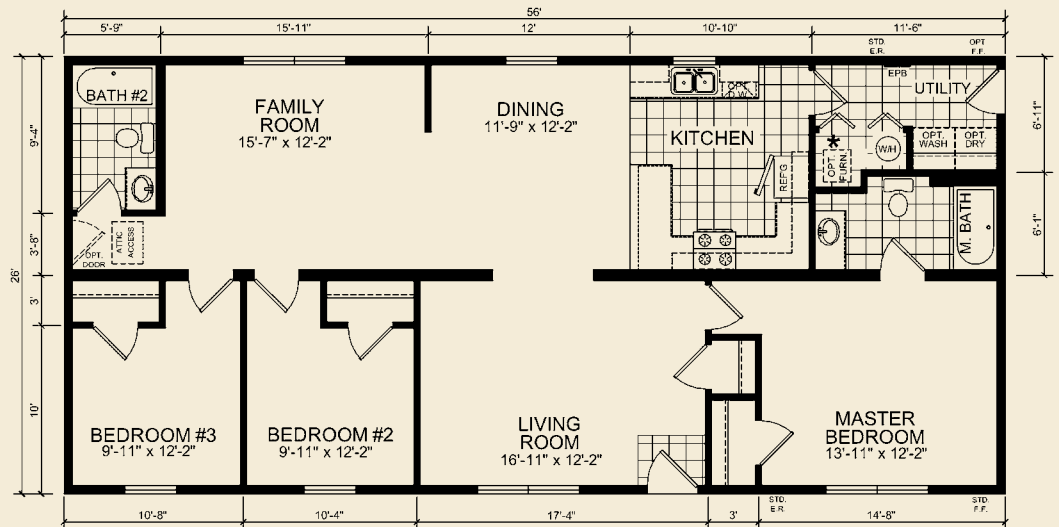
*FURNACE OPTION INCLUDES WARM AIR DUCTS IN THE FLOOR AND RETURN AIR DUCTS IN THE CEILING.

RM 05

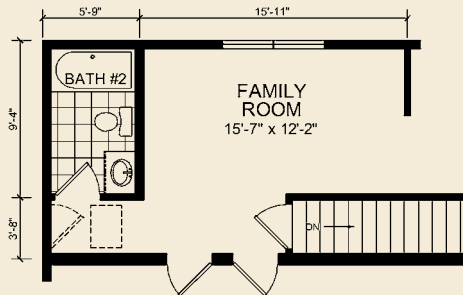


The Maccomb

26' x 56' Ranch
 1456 Total Sq. Ft.
 3 Bedrooms / 2 Baths



OPTIONAL 4th BEDROOM



OPTIONAL BASEMENT
 (N/A WITH OPTIONAL 4th BEDROOM)

STANDARD FEATURES

FRAMES & FLOORS

Open-Web Joist Floor 19.2" O.C.
Returnable Modular Carrier
19/32" 4 x 8 OSB Floor Decking
Double 2 x 10 Rim Joist / LVL Marriage Line
Rim Joist
Perimeter Registers w/ 6" Round Boots
18oz Plush Carpet
5 Lb. Rebond Carpet Pad
Linoleum in Wet Areas & Foyer

CEILING & ROOF

8' Flat Ceilings w/ Stomped Textured Finish
5/12 Roof Pitch STD on 26' & 28' Wides
7/12 Roof Pitch STD 30' Wide
R-40 Cellulose Insulation
7/16" OSB Roof Sheathing
30 Yr Fiberglass Dimensional Shingles
12" Vented Eaves
Steel Fascia Trim
Fully Vented Vinyl Soffit
Roof Load Meets or Exceeds State
Requirements

EXTERIOR DOORS & WINDOWS

Vinyl Single Hung, Low "E" w/ Grids
36 x 80 White Steel 6-Panel w/ Storm - Front
Door
White Steel 6-Panel Fire Rated - Rear Door
Brush Nickel Lockset / Deadbolt
Mulled Windows

INTERIOR WALLS & DOORS

2 x 4 24" O.C.
2 x 6 Plumbing Walls
1/2" Drywall T/O
Flush Oak Interior Doors
Nickel Round Knobs / 2 Mortised Hinges
Metal Bi-Fold - VBP @ Furnace, Water Heater,
Ash Door and Window Casing
Ash Base Moulding
Wrapped MDF Fairfield Oak Jambs - Door /
Window
Ash Door Stop
2 x 4 16" O.C. Marriage Wall

EXTERIOR

2 x 6 Wall Studs / 16" O.C.
R-19 Kraftback Insulation
7/16" OSB Sheathing
House Wrap
Double 4" Vinyl Siding
15" Raised Panel Shutters - Doorside

HEATING & PLUMBING

40 Gallon Electric Water Heater
Main Water Shut-Off @ Water Heater
Water Shut-Offs @ All Fixtures
PEX Water Lines
Schedule 40 PVC Drain / Vent Lines
(1) Frost Free Exterior Faucet w/ Shut-Off Per
Print
Plumb for Washer - Per Plan
In Wall Cold Air Returns - Houses w/out
Furnaces

ELECTRICAL

200 AMP Service w/ 30-40 Box
12-2 Copper T/O
Wire for Dryer
Smoke Detectors - All Bedrooms & LR
GFI Recepts - Kitchen, Baths, (2) Exterior
Aluminum Torch Lights - Front Door, Rear
Door or Patio Door
Up to 6 Can Lights Over Cabinets & Island in
Kitchen

KITCHEN & BATH

30" Deluxe Electric Range
17 CF Over/Under Refer
7 1/2" Stainless Steel Sink w/ Pullout Sprayer
Ceramic Tile Between Range/Range Hood
Staggered Cabinets
Bottom Lip Molding
Fiberglass Oval Drop-In (VBP)
48" or 60" 1-Piece Fiberglass Shower - VBP
60" 1-Piece Fiberglass Tub - Bath 2
Brushed Nickel Faucets
Elongated China Commode
China Lavs
Lighted Bath Vents - Eave Vent / Side
Discharge

CABINETRY

Hardwood Oak Flat Cab Doors
1/2" Cabinet End Panels
Hidden Hinges
Countertops-Hi Pressure Laminate w/ Self
Edge
Laminate Backsplash
30" Overhead Cabinets
Hardwood Oak Stiles
1-3/4" Cabinet Cove
Pantry w/ Lazy Susan & Roll-Out Shelf-VBP-
(Kit)
Kitchen Island - VBP
1/2" Adjustable Center Shelf
Nickel Pulls
Bottom Cabinet Trim
Staggered Cabinets - Range, Refer & Corner
Cabs - VBP

ADDITIONAL

Drape & Valance in LR DR, FR, & MBR
Valances - All Else
1" Vinyl Mini Blinds
5 Arm DR Chandelier w/Globe
Nickel Light Package
Wire Closet Shelving



Build Better. Build Faster.



GENESIS

HOMES

Build Better. Build Faster.

Due to continuous product development and improvement, prices, specifications and material are subject to change without notice or obligation. Square footage and other dimensions are approximate. Included images are artist renderings and are not intended to be an accurate representation of the homes. Renderings and Floor Plans may be shown with optional features and / or third party additions that may not be available in all regions or situations. Exterior Renderings may include on-site builder built options not offered by Champion Home Builders, Inc.

10/12