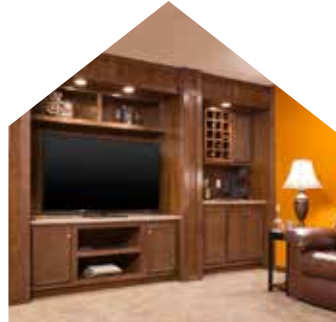




NEW MOON
SERIES

REDMAN  HOMES.®



ABOUT US

Redman Homes is one of the oldest and most respected homebuilders in America. Founded in 1937, Redman pioneered factory-built home construction and continues to lead advances in quality control, design and home value today. Through experience and innovation we've harnessed production line efficiency and, paired with our high-quality craftsmanship, created a process that delivers homes that meet our superior standards.

A place to call your own

Beyond just building you a house, we're committed to providing you and your family with a home to make memories in that will last a lifetime. Somewhere you can feel secure. A place you can call your own. A home that fits your lifestyle and has your own personal touch. Whether you're an active young family constantly on the go or empty nesters ready to simplify, just relax – we have a home that's right for you.

More choice, more freedom

Our vast selection of floor plans, color choices and options give you the design choices you want to create a home you'll truly enjoy. Using our online Kitchen Designer, it's easy to create the kitchen of your dreams.

Building the best

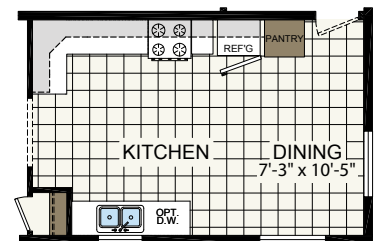
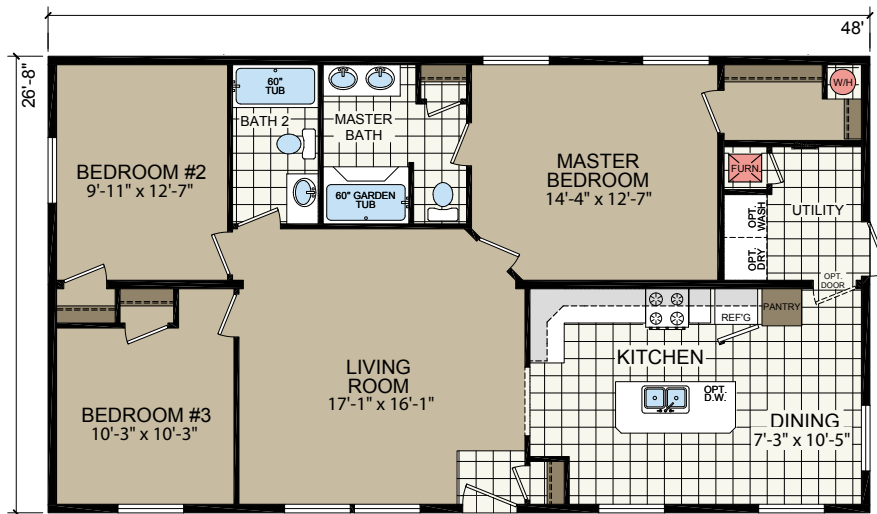
We build each and every home to meet or exceed a strict national or state building code, and we set even higher standards for ourselves. Focusing on the things you don't see as well as the things you do, we monitor and inspect our homes at every stage of construction. From the plumbing system to the electrical wiring, from the kitchen cabinets to the closets in the bedrooms – every home we build undergoes rigorous quality inspections to ensure we're providing you with nothing but our best.

The quality you expect

To build the best, we use the best. To meet your expectations of quality - and ours - we use only the highest-quality building materials and trusted national brand names. From insulation and fixtures to flooring and appliances, we only buy components from suppliers who share our commitment to quality. By using the best, we're confident we can build you a home with the lasting value you'll appreciate for years to come. Your housing consultant can tell you more about the specific brands used in our homes.

SUNSET

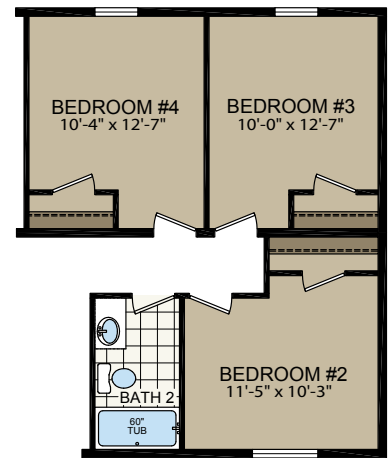
RNM 2852-01
28' x 48'
3 bed-2 bath
1280 sq. ft.



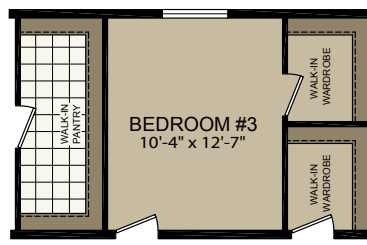
OPTIONAL KITCHEN

VIRGINIA

RNM 2860-01
28' x 56'
3 bed-2 bath
1493 sq.ft.



OPT 4th BEDROOM



OPTIONAL WALK-IN PANTRY

NEWPORT

RNM 2860-07

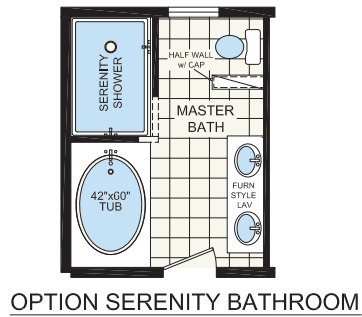
28' x 56'

3 bed-2 bath

1493 sq.ft.



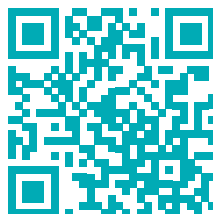
Shown with Optional Elevation and Porch by Others



OPT. MASTER BEDROOM w/ ARMOIRE

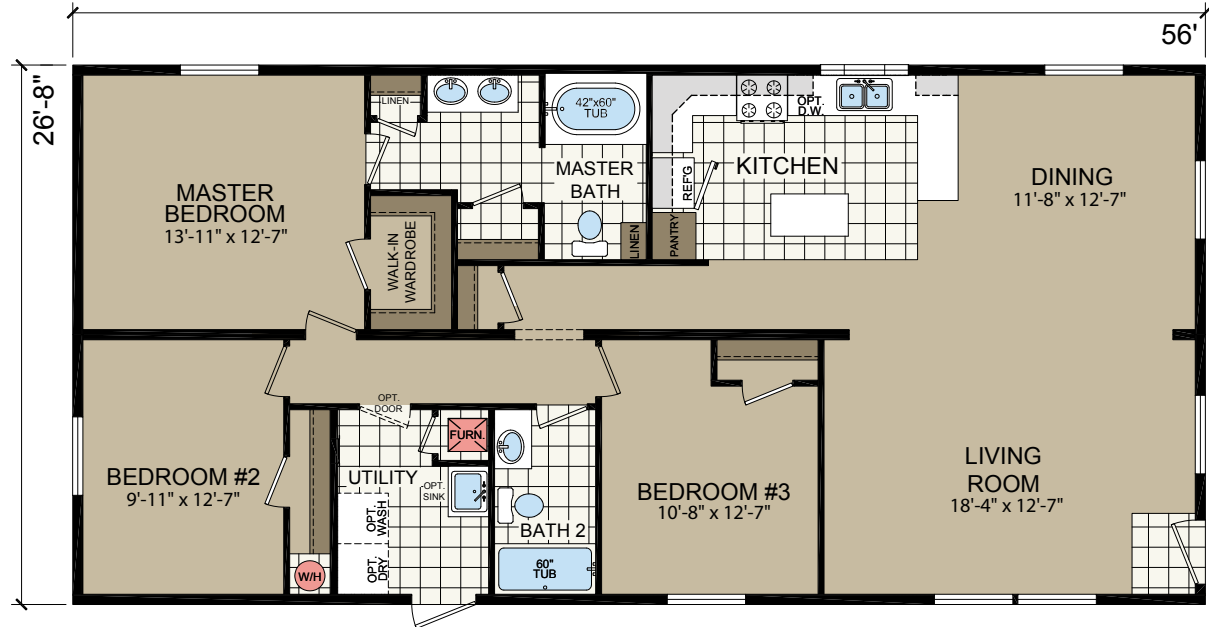


TAKE A
VIDEO TOUR
OF THIS HOME



CRANBERRY

RNM 2860-03
28' x 56'
3 bed-2 bath
1493 sq.ft.



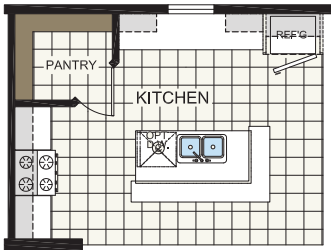
MALIBU

RNM 2864-01

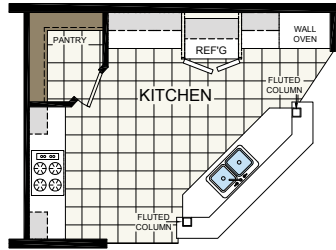
28' x 60'

3 bed-2 bath

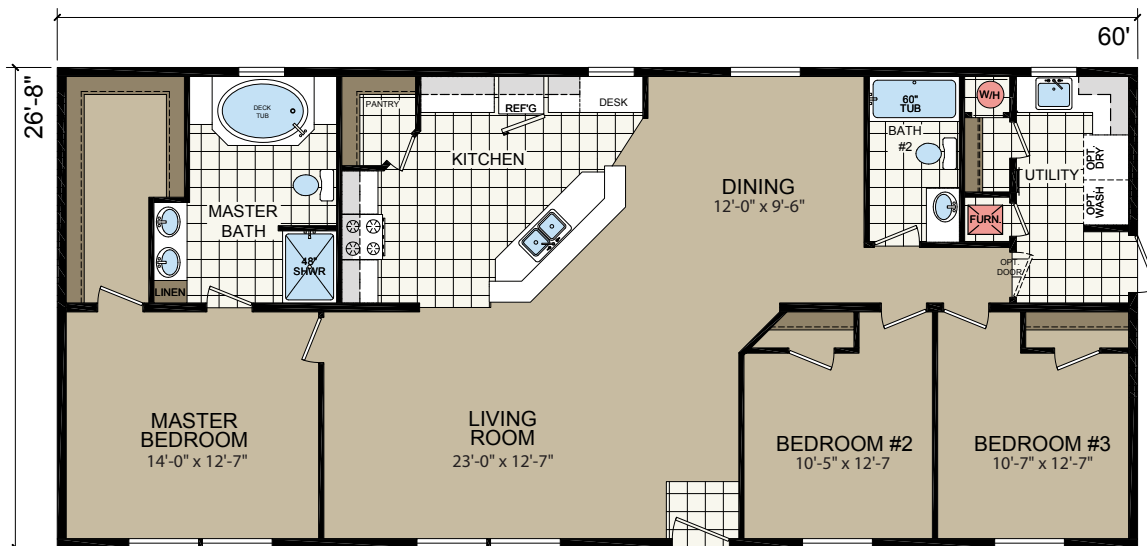
1600 sq. ft.



OPTIONAL KITCHEN



OPT. ULTIMATE KITCHEN



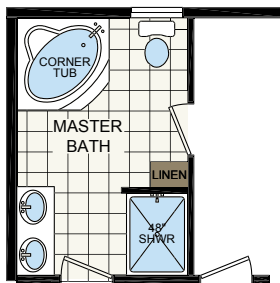
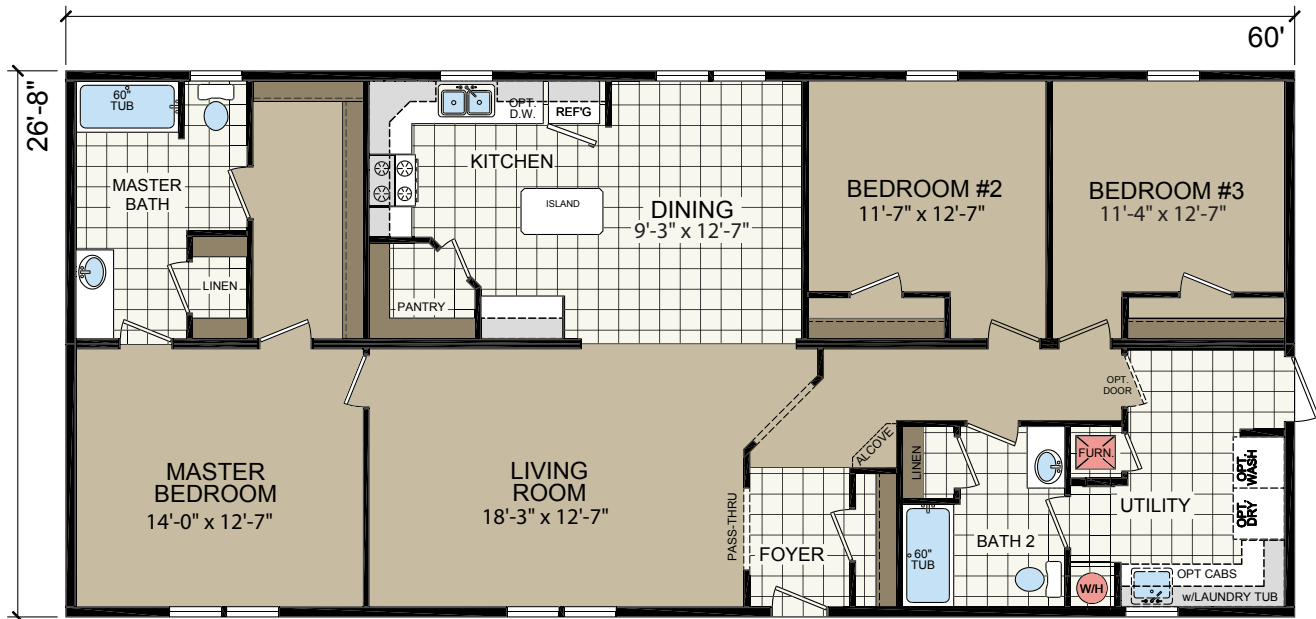
MYRTLE

RNM 2864-03

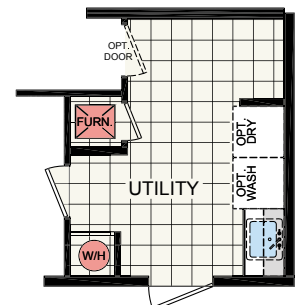
28' x 60'

3 bed-2 bath

1600 sq.ft.



OPT. MASTER BATH



OPT. DOOR LOCATION

OCEANSIDE

RNM 2864-05

28' x 60'

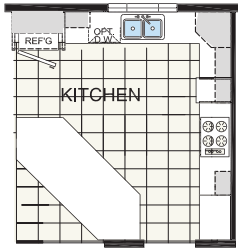
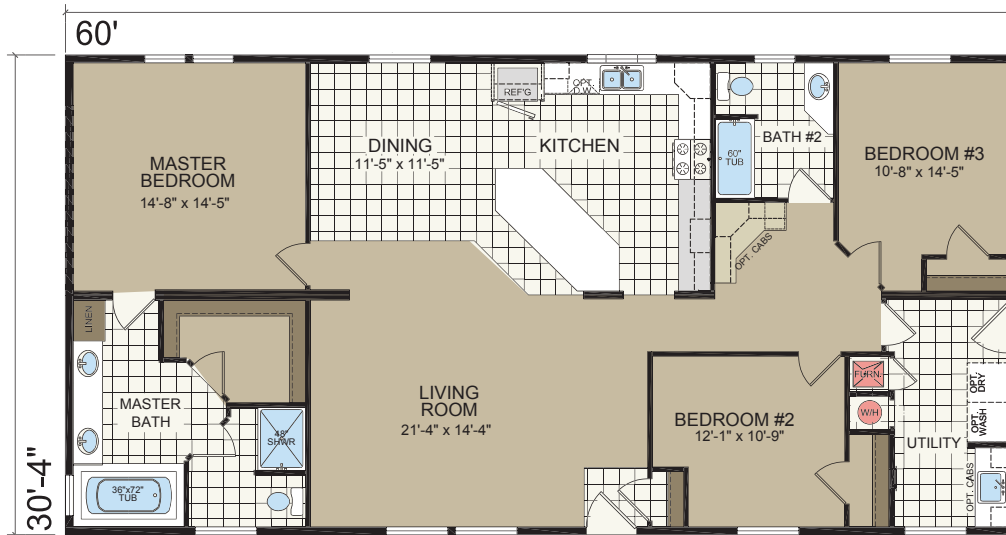
3 bed-2 bath

1496 sq.ft.

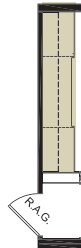


SAVANNAH

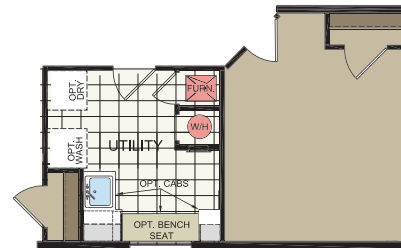
RNM 3264-17
 32' x 60'
 3 bed-2 bath
 1920 sq.ft.



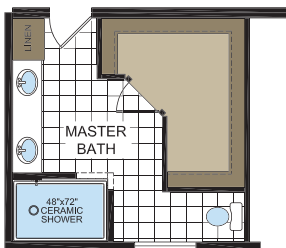
OPTION ULTIMATE KITCHEN



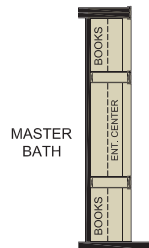
OPTION VANISHING MATE LINE (DINING ROOM/HUTCH)



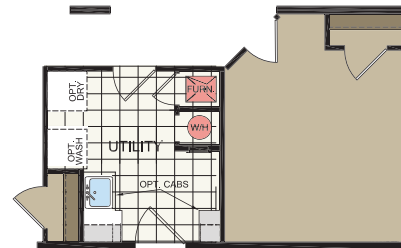
OPTION UTILITY ROOM
 (REQUIRES PATIO DOOR IN DINING ROOM)



OPTION SERENITY BATH



OPTION VANISHING MATE LINE (LIVING ROOM)



OPTION UTILITY ROOM & FRONT ENTRY
 (REQUIRES PATIO DOOR IN DINING ROOM)

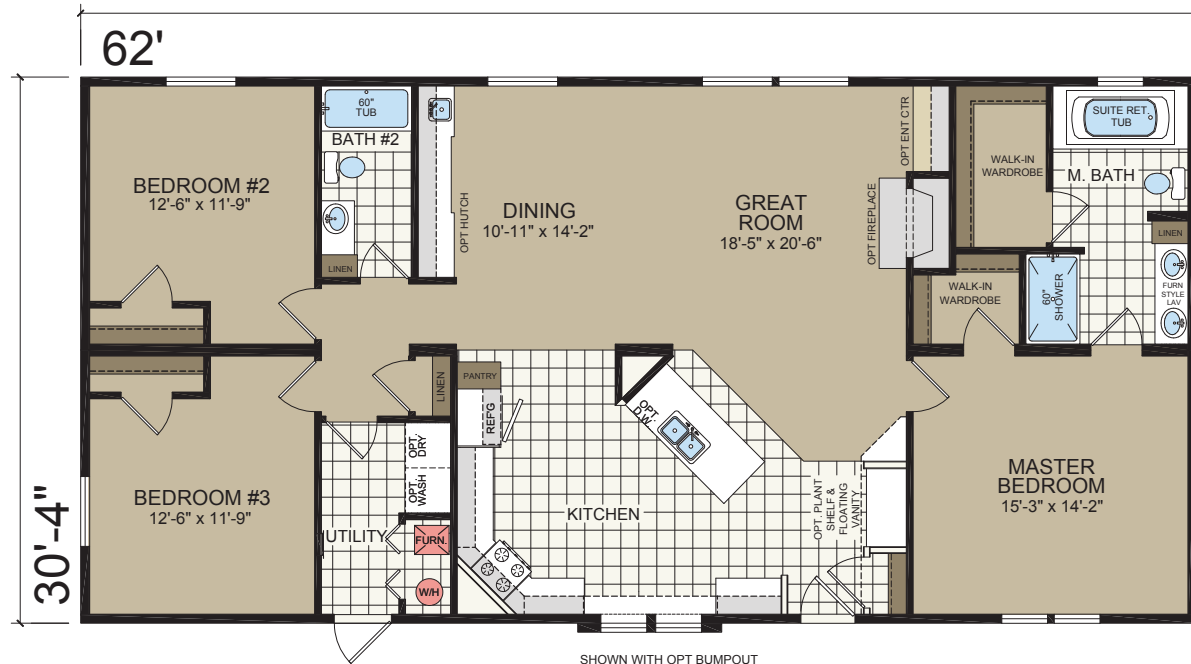
PETROSKY

RNM 3266-01

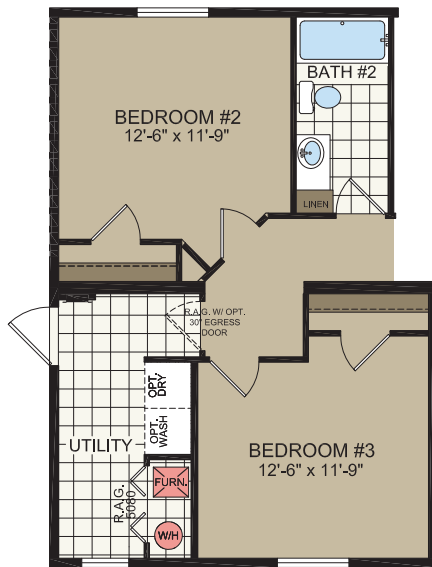
32' x 62'

3 bed-2 bath

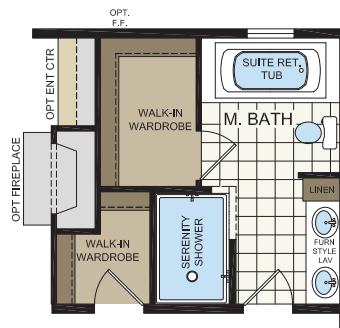
1880 sq.ft.



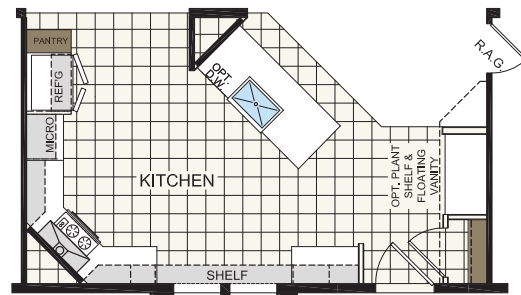
SHOWN WITH OPT BUMPOUT



END ENTRY OPTION



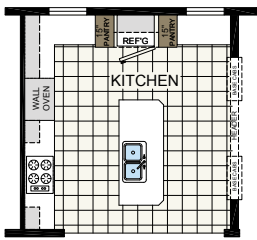
OPTION SERENITY BATH



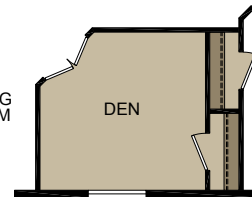
OPTION ULTIMATE KITCHEN 2

INDIAN

RNM 3268-01
 32' x 64'
 4 bed-2 bath
 1941 sq.ft.



OPT ULT. KITCHEN



OPTIONAL DEN

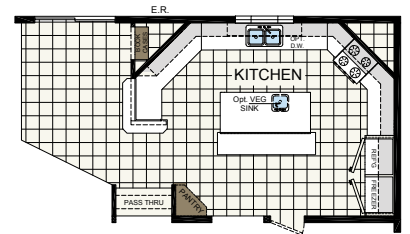
DAKOTA

RNM 3272-01
 32' x 68'
 3 bed-2 bath
 2062 sq.ft.

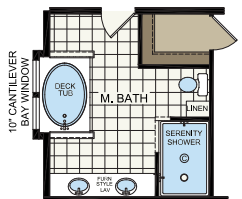


Shown with Site-built Porch by Others

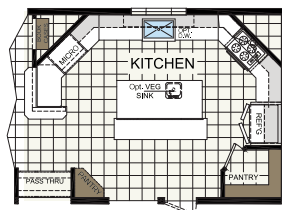
TAKE A
 VIDEO TOUR
 OF THIS HOME



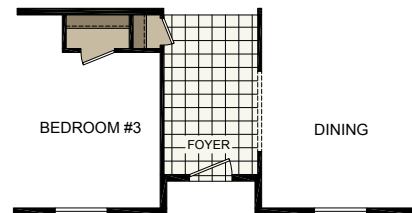
OPT. KITCHEN



OPTION SERENITY BATH



OPTION ULTIMATE KITCHEN 2



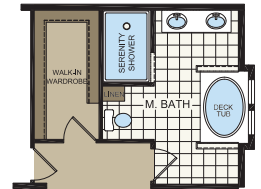
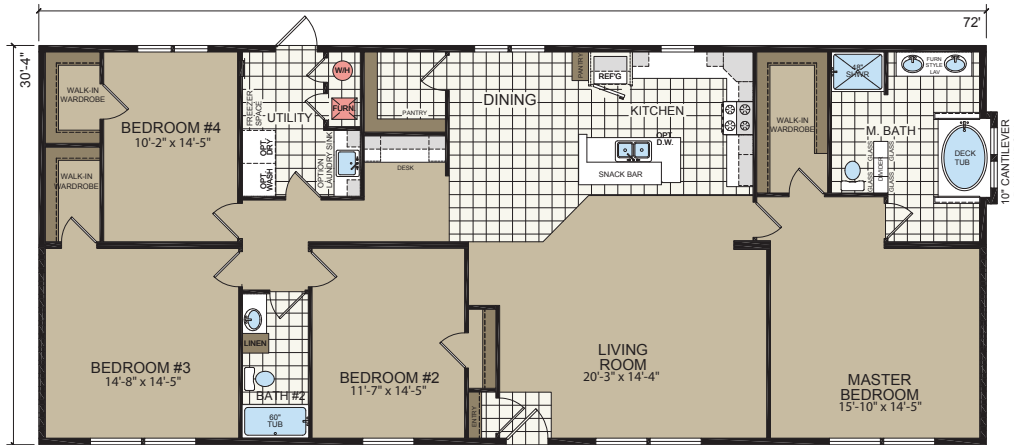
OPT. RECESSED ENTRY

APOLLO

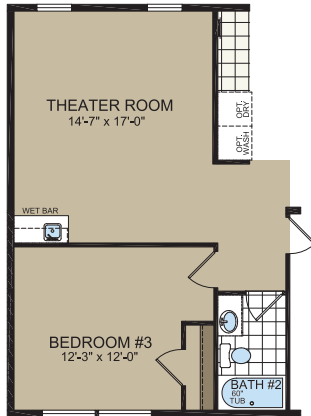
RNM 3276-01
 32' x 72'
 4 bed-2 bath
 2184 sq.ft.



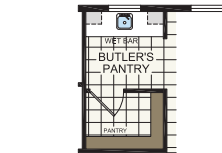
*Shown with Optional Elevation



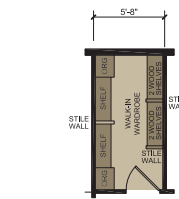
OPTION MASTER BATH



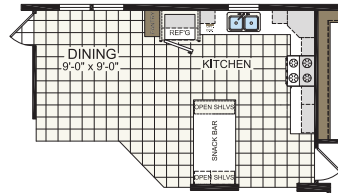
OPTION THEATER ROOM



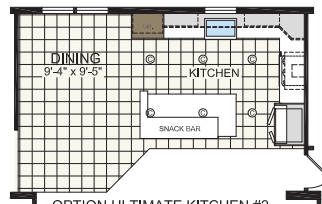
OPTION BUTLER'S PANTRY



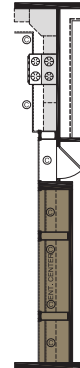
OPTION CLOSET ORGANIZER



OPTION KITCHEN



OPTION ULTIMATE KITCHEN #2



OPTION VANISHING MATE LINE (8' FLAT & DR WALL ONLY)



OPTION ENT. CENTER

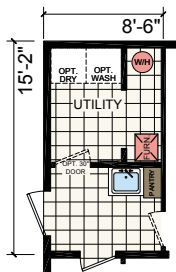


Apollo

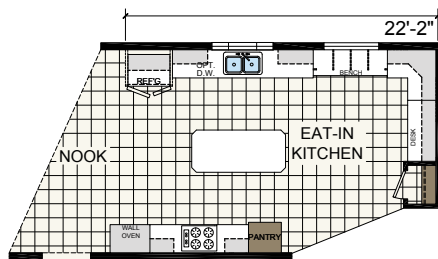


RED CEDAR

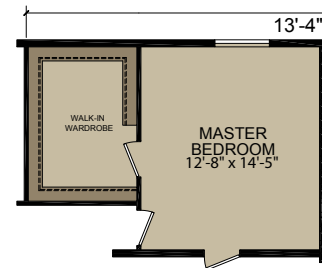
RNM 3280-01
 32' x 76'
 4 bed-3 bath
 2305 sq. ft.



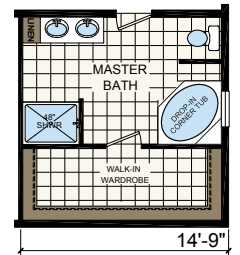
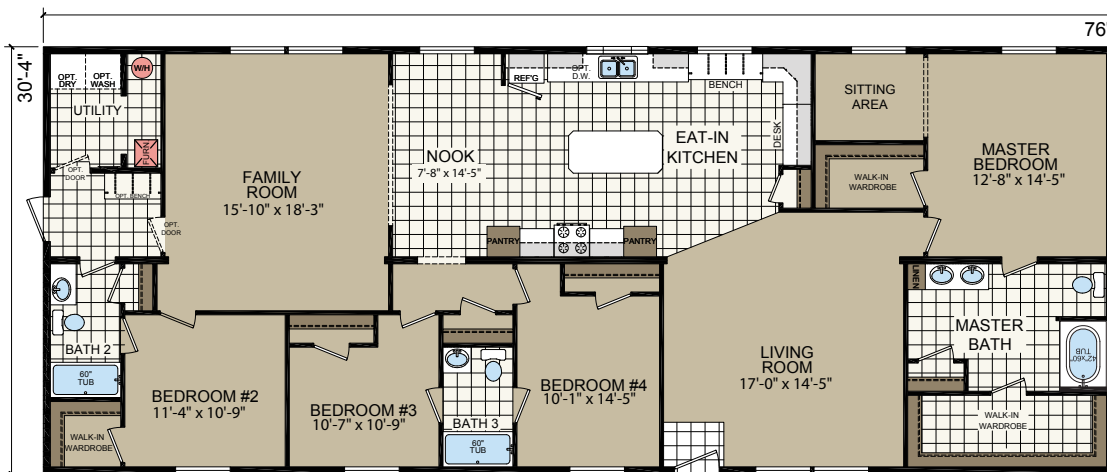
OPTIONAL UTILITY SINK



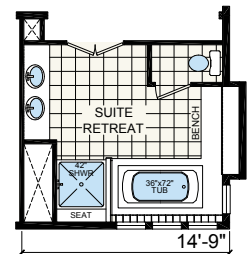
OPTIONAL ULTIMATE KITCHEN



OPTIONAL WALK-IN WARDROBE



OPTIONAL BATH



OPTIONAL SUITE RETREAT

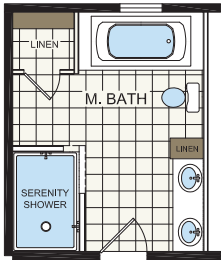
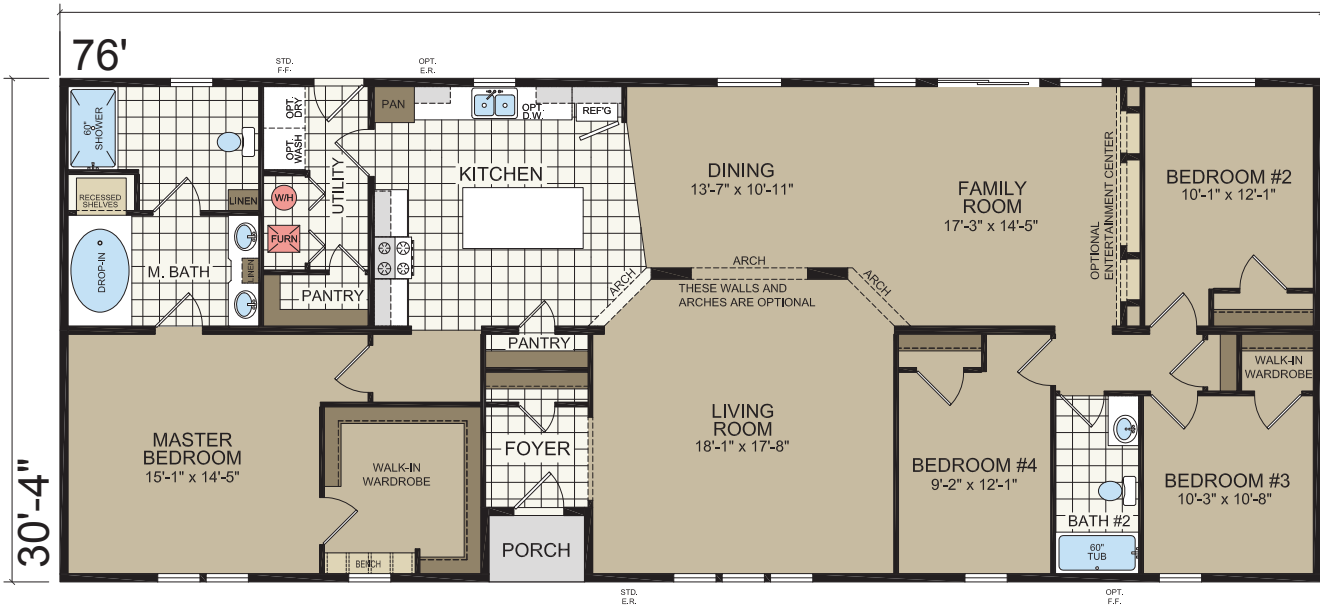
CAROLINA

RNM 3280-03

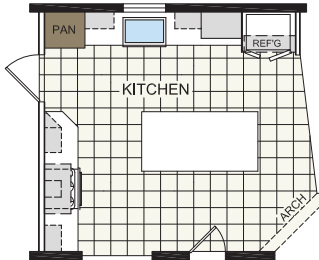
32' x 76'

4 bed-2 bath

2305 sq. ft.



OPTION SERENITY BATH



OPTION ULTIMATE KITCHEN #2

FILLMORE

CO-LS 2872-301

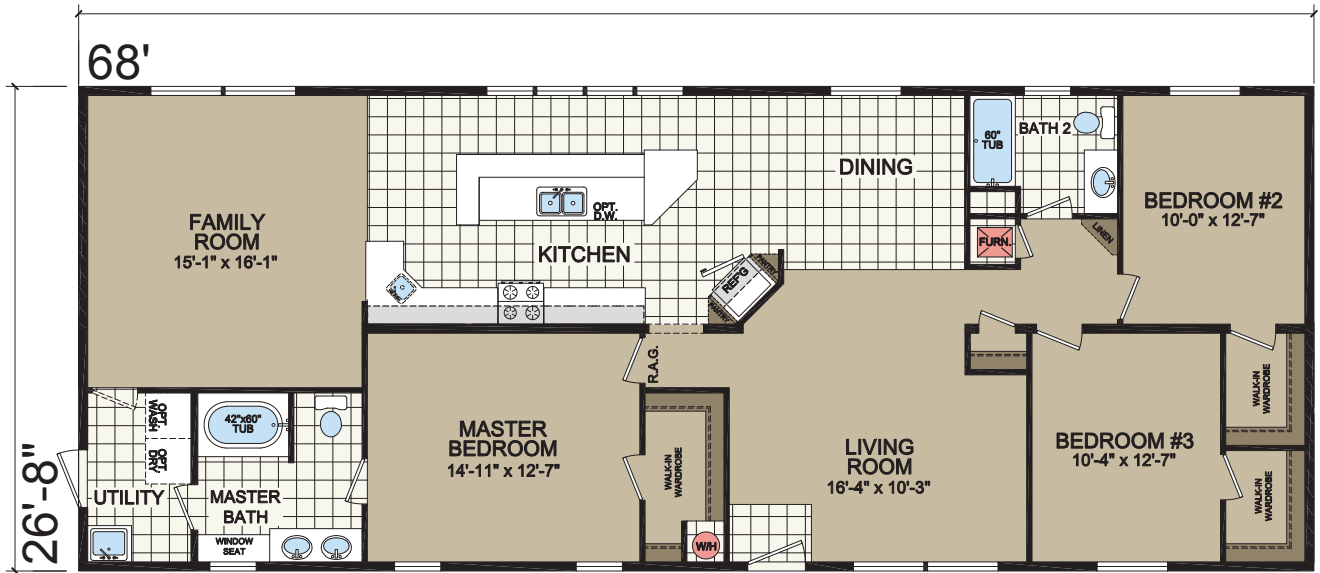
28' x 68'

3 bed-2 bath

1814 sq. ft.



*Shown with Optional Elevation



FILLMORE OPTIONS



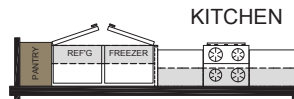
**OPTIONAL POWDER ROOM
w/OPTIONAL KITCHEN**



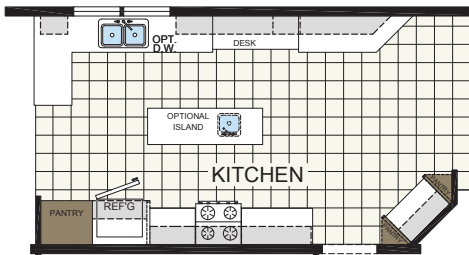
**OPT LARGER MASTER BEDROOM
w/OPTIONAL KITCHEN**



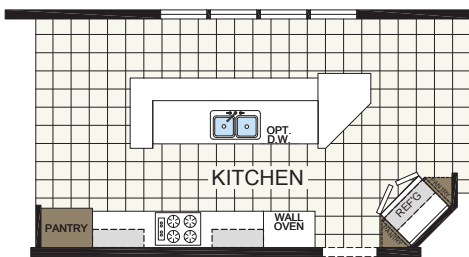
**OPT LARGER CLOSET for
POWDER ROOM Option**



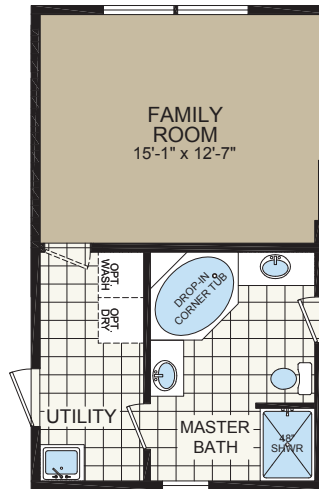
S X S REFER/FREEZER OPTION



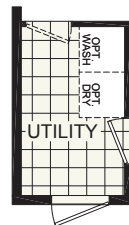
OPTIONAL KITCHEN



OPTIONAL ULTIMATE KITCHEN



OPT MASTER BATH



OPT EXT DOOR LOCATION



OPT FIREPLACE



MACOMB

RM-HS 2870-301

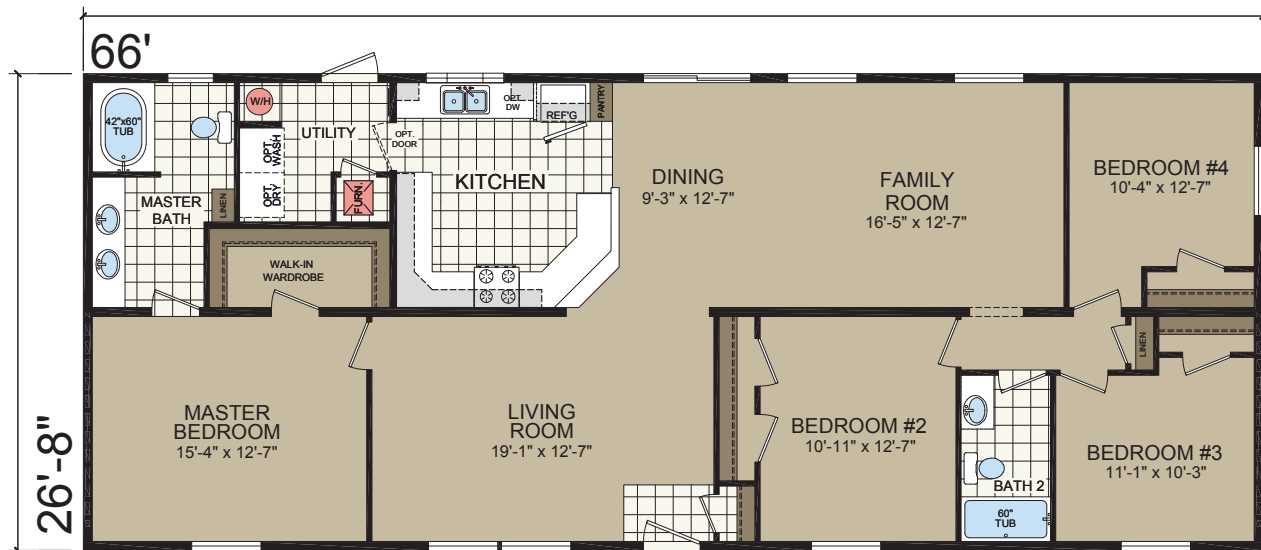
28' x 66'

3 bed-2 bath

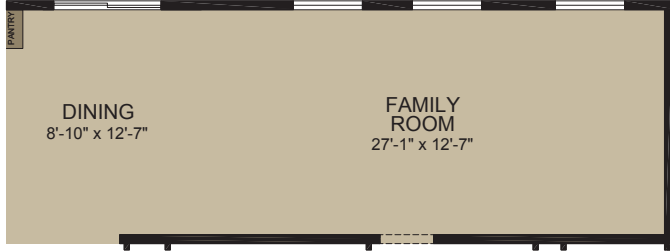
1706 sq. ft.



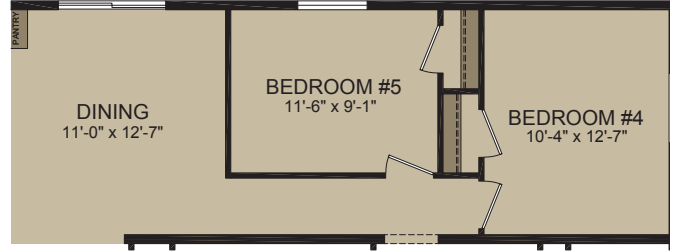
**Shown with Optional Elevation*



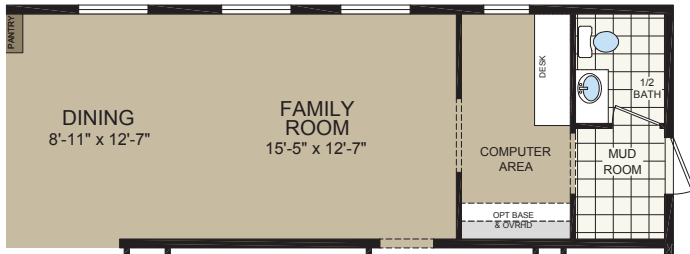
MACOMB OPTIONS



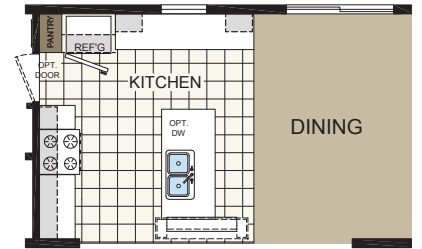
OPT. FAMILY ROOM w/3-BED



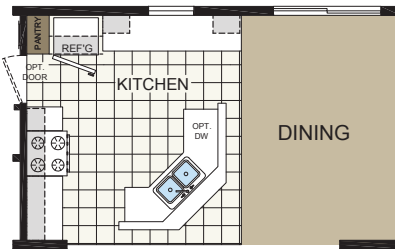
OPT. 5th BEDROOM



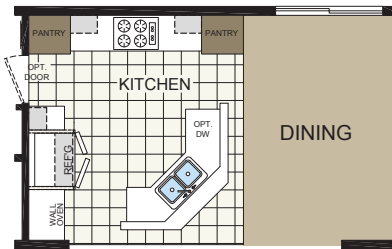
OPT. MUD ROOM
& COMPUTER AREA w/ 1/2 BATH



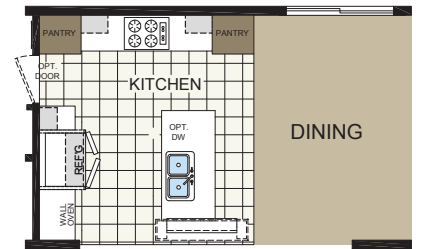
OPT. KITCHEN #2



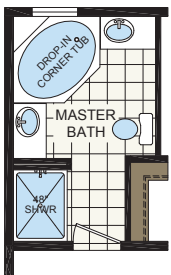
OPT. KITCHEN #1



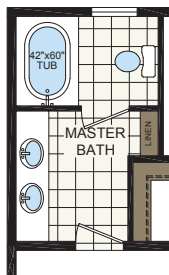
OPT. UK f/ KITCHEN #1



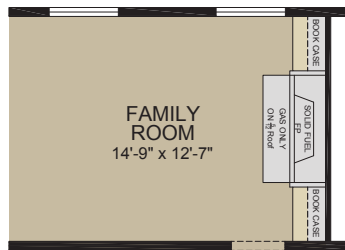
OPT. UK f/ KITCHEN #2



OPT. MASTER BATH #1



OPT. MASTER BATH #2



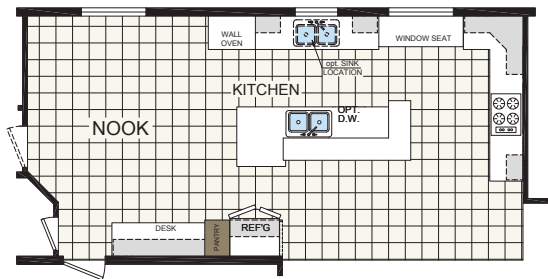
OPT. FP f/FAMILY ROOM

ROOSEVELT

CO-LS 3260-301
32' x 56'
3 bed-2 bath
1698 sq. ft.



**Shown with Optional Elevation*

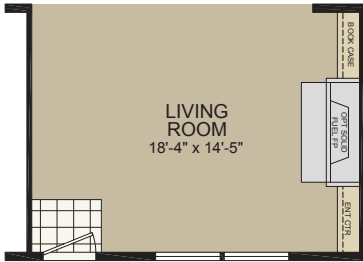


OPTIONAL ULTIMATE KITCHEN

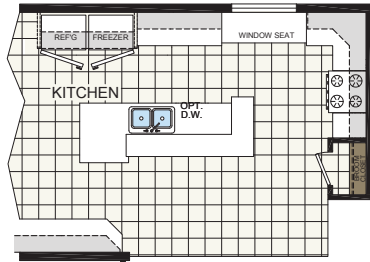
ROOSEVELT OPTIONS



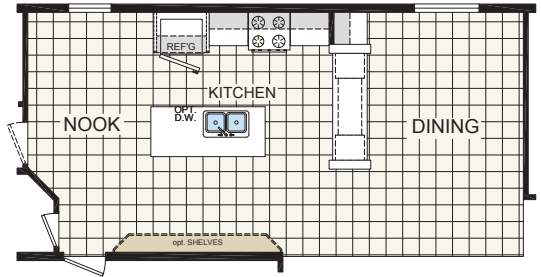
OPTIONAL DEN with OPTIONAL KITCHEN



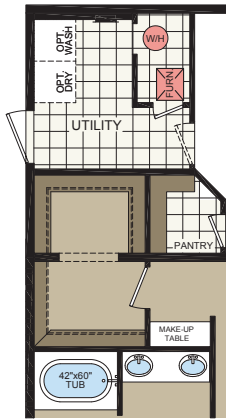
FIREPLACE OPTION



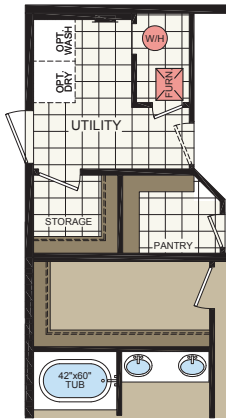
SxS REFER/FREEZER OPTION



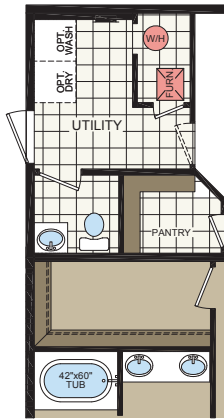
OPTIONAL KITCHEN



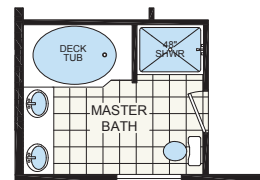
OPTIONAL LARGER MBED
CLOSET & MAKE-UP TABLE



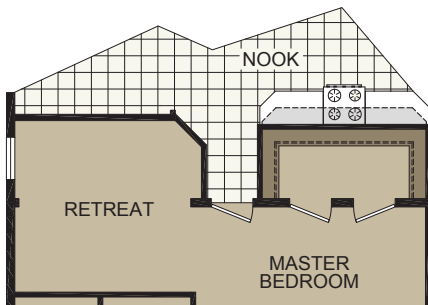
OPTIONAL STORAGE
ROOM & MBED CLOSET



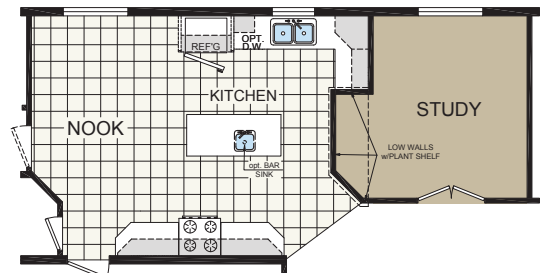
OPTIONAL POWDER ROOM
& MBED CLOSET



OPTIONAL
MASTERBATH



MASTERBED w/RETREAT OPTION



OPTIONAL STUDY

KENNEDY

CO-LS 3280-301

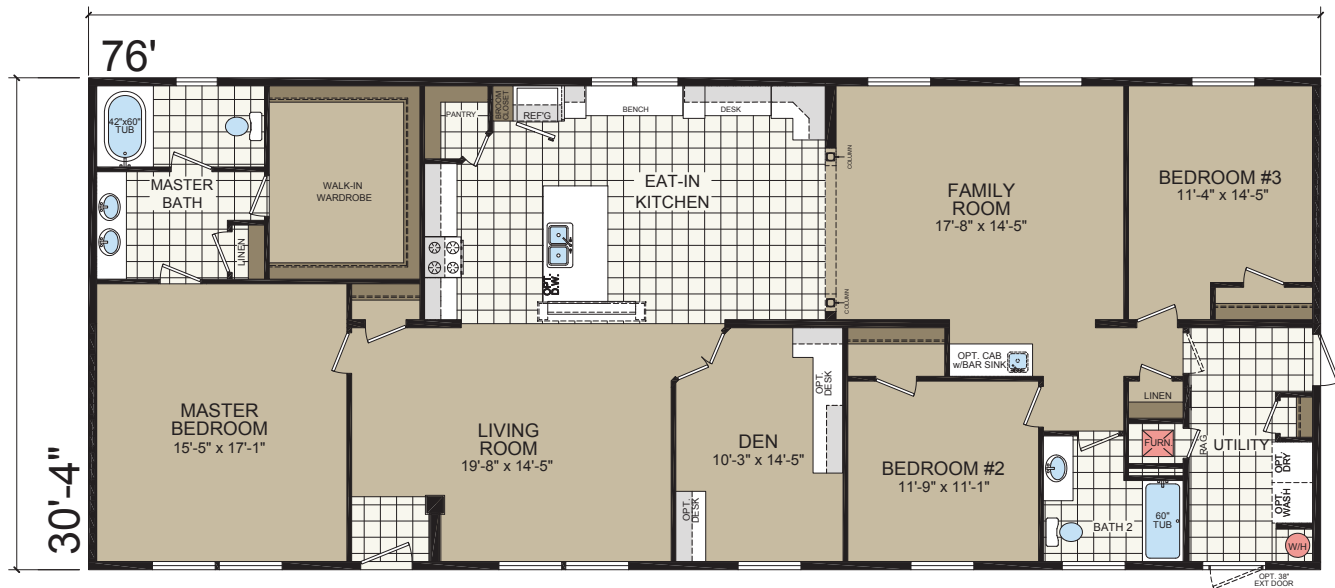
32' x 76'

3 bed-2 bath

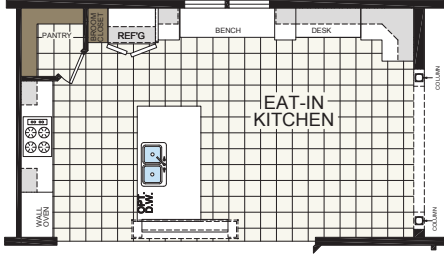
2305 sq. ft.



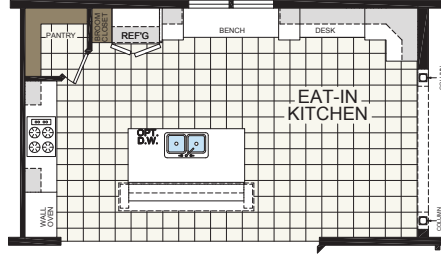
**Shown with Optional Elevation*



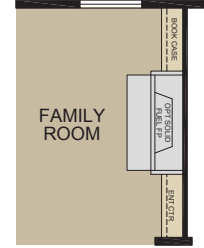
KENNEDY OPTIONS



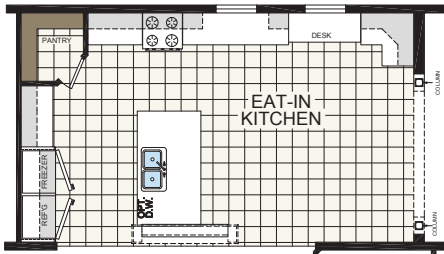
OPTIONAL ULTIMATE KITCHEN



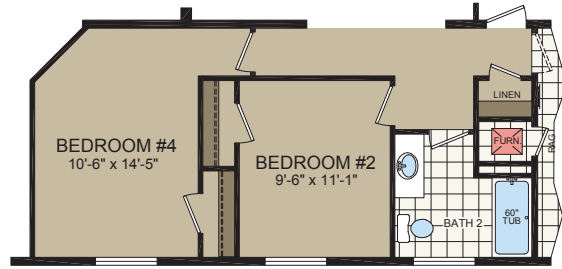
OPTIONAL ULTIMATE KITCHEN w/OPT ISLAND



OPTIONAL FIREPLACE - ENTERTAINMENT CTR



OPTIONAL SIDE by SIDE REFER/FREEZER



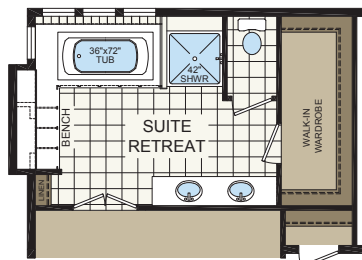
OPTIONAL 4th BEDROOM



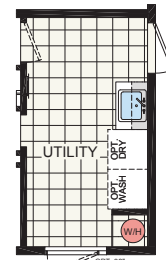
OPTIONAL FORMAL DINING-ROOM w/OPT ISLAND LAYOUT



OPT MASTERBATH LAYOUT



OPT SUITE RETREAT LAYOUT



OPTIONAL U.R. SINK

STANDARD FEATURES

STRUCTURAL

- Recessed Frame & Detachable Hitch
- Crossmembers/Outriggers every 4' on Steel Undercarriage
- 2 x 6 Exterior Sidewalls 16" OC
- 2 x 6 (28') or 2 x 8 (32') Floor Joist 16" OC
- R-11 Floor Insulation
- R-19 Sidewall Insulation
- R-30 Roof Insulation
- 30 lb. PSF Roof Load
- 5/8" OSB Floor Decking T & G
- 7/16" OSB Roof Sheathing

EXTERIOR

- 8' Sidewalls
- Nominal 3/12
- 25 Year 3-Tab
- Shingles
- OSB w / House Wrap
- 2 x 6 Fascia Backer
- Aluminum Fascia
- All Around Vented Eaves
- Double 4" Dutch Lap Vinyl Siding
- Black Lantern at All Exterior Doors
- 1-Exterior Recept
- Raised Panel Shutters - Doorside

INTERIOR FINISH

- Flat Ceiling
- Stomped Textured Ceiling
- 1/2" Finished Drywall
- Finished Ceiling Joints In Living Area 2 1/2" Ash Cove all other locations
- 2 1/4" Ash Base
- Drapes - LR, FR, and DR
- Drapery Rod in LR, FR and DR
- Valances: Kitchen / MBR / Mbat
- 2" Mini Blinds T/O
- Linoleum Foyer
- 16 oz. Plush Carpet
- 5 lb. Rebond Carpet Pad
- Tack Strip
- 11" Platinum Light Fixtures in Bedrooms
- Platinum Chandelier in Dining Room
- 4" Light Fixture in Walk-In Closets
- Smoke Alarms w/ Battery Backup
- Wire Closet Shelving
- Washer/Dryer Shelf
- 2 1/4" Ash Window / Door Casing
- Vinyl Wrapped Window / Door Jamb

BATHROOMS

- 40x60 Fiberglass Garden Tub/Shower -- Master Bath - VBP
- 60" Fiberglass Tub/Shower
- Pivot Shower Door for 60" or 48" Shower - VBP
- China Tank & Stools w/ Elongated Bowls
- China White Bathroom Sinks
- Bath Faucets
- 3-Arm Platinum Light Fixture
- Vent Fan w/ Light
- Lino in ALL Baths
- Bank of Drawers -- VBP
- Dbl Vanity w/ Single Bank of Drawers -- Mstr Bath -- VBP
- 15" Linen 2 Door 4 Drawers (006) -- Mstr Bath -- VBP
- 48" Linen Closet -- Mstr Bath -- VBP
- 36" High Vanities
- White Ceramic Tub Trim
- Trimmed Mirrors

KITCHEN

- 30" Standard Clean Electric Range
- 30" Range Hood
- 18" CF Over/Under Refrigerator
- Refer Overhead
- Cabinet
- Hardwood Flat Panel Cabinet Doors
- 42" O/H Cabinets w/ Cubbies
- 1/2" Cabinet Side
- Panels
- Grooved End Panels
- 3/4" Adjustable Shelving
- Stainless Steel Sink
- Kitchen Faucet w / Pull Out Sprayer
- Hardwood Stiles w/ Concealed Hinges
- 6-Door Pantry w/ Lazy Susan and Slide-Out Drawers -- VBP
- Ceramic Tile Between Range/Range Hood
- Single Drawer Stack
- Drawers over Doors
- Bottom Lip Molding on O/H Cabs
- Cabinet Cove
- Can Lights in Kitchen - VBP
- Pot & Pan Drawer - VBP
- 4" Laminate
- Backsplash
- Fluted Trim w / Top and Bottom
- Rosettes at Sink
- Arched Valance Board

WINDOWS & DOORS

- White 6-Panel Front Door w/Storm
- White 6-Panel Rear Door w/Storm
- Dead Bolt Locks on All Doors
- 3 Mortised Hinges at all Interior Doors
- Low E Single-Hung Vinyl Windows
- Wood Furnace Door
- Nickel Round Knobs (Interior Doors)
- Wood Tone 6 Panel Int Doors to Match Cabs Except for Creston Oak Cabinets which are only available with White 6 Panel Int Doors

HEATING / PLUMBING / ELECTRICAL

- Electric Furnace
- Perimeter Heat
- Drop in Registers ALL Living Areas
- Drop in Registers at Baths
- Dual Control Thermostat
- Ventilation System for Fresh Air Furnace Combustion
- In-Line Metal Crossovers Heat Duct
- 200AMP Service
- Residential Electrical Switches
- Residential Panel Box
- All Copper Wiring
- Heat Tape Receptacle
- 40 Gal Electric Water Heater
- Brass Plumbing Fittings
- Main Water Shut Off
- GFI Recept in Bathrooms / Kitchen
- 4" Light Fixture - Closet - VBP
- Bedroom Ceiling Lights T/O
- One (1) Frost-Free Faucet - Per Print
- Wire and Vent Dryer
- Plumb for Washer

VBP = *Varies by Print*

Due to continuous product development and improvement, prices, specifications, and materials are subject to change without notice or obligation. Square footage and other dimensions are approximate. Exterior images may be artist renderings and are not intended to be an accurate representation of the home. Renderings, photos and floor plans may be shown with optional features or third-party additions.

MAKE YOURSELF AT HOME WITH REDMAN HOMES

Redman tradition, Redman value

It's finding a home you can feel proud to call your own. It's design choices that perfectly match your need for space and comfort and frees you to express them in your own way. It's award-winning design and craftsmanship with impeccable attention to detail. It's a commitment to providing you with the style and features you'll enjoy for years to come. It's combining everything you would want in a home with surprising affordability.

And it's all yours from Redman Homes.









308 Sheridan Drive | Topeka, IN 46571
T 800-777-6637 | F 260-593-2401
www.redmanhomesofindiana.com

CHAMPION®

MANUFACTURED BEAUTIFULLY™