



# NEW MOON MODULAR SERIES

REDMAN  HOMES.®

# ABOUT US

**Redman Homes is one of the oldest and most respected homebuilders in America. Founded in 1937, Redman pioneered factory-built home construction and continues to lead advances in quality control, design and home value today. Through experience and innovation we've harnessed production line efficiency and, paired with our high-quality craftsmanship, created a process that delivers homes that meet our superior standards.**

## **A place to call your own**

Beyond just building you a house, we're committed to providing you and your family with a home to make memories in that will last a lifetime. Somewhere you can feel secure. A place you can call your own. A home that fits your lifestyle and has your own personal touch. Whether you're an active young family constantly on the go or empty nesters ready to simplify, just relax – we have a home that's right for you.

## **More choice, more freedom**

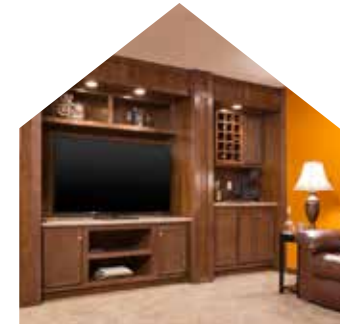
Our vast selection of floor plans, color choices and options give you the design choices you want to create a home you'll truly enjoy. Using our online Kitchen Designer, it's easy to create the kitchen of your dreams.

## **Building the best**

We build each and every home to meet or exceed a strict national or state building code, and we set even higher standards for ourselves. Focusing on the things you don't see as well as the things you do, we monitor and inspect our homes at every stage of construction. From the plumbing system to the electrical wiring, from the kitchen cabinets to the closets in the bedrooms – every home we build undergoes rigorous quality inspections to ensure we're providing you with nothing but our best.

## **The quality you expect**

To build the best, we use the best. To meet your expectations of quality - and ours - we use only the highest-quality building materials and trusted national brand names. From insulation and fixtures to flooring and appliances, we only buy components from suppliers who share our commitment to quality. By using the best, we're confident we can build you a home with the lasting value you'll appreciate for years to come. Your housing consultant can tell you more about the specific brands used in our homes.





# SUNSET

NM 4811  
28'x48'  
3 Bed, 2 Bath  
1280 sq. ft.



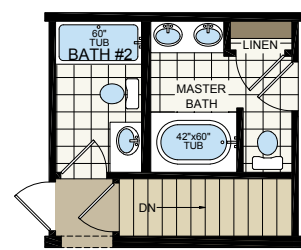
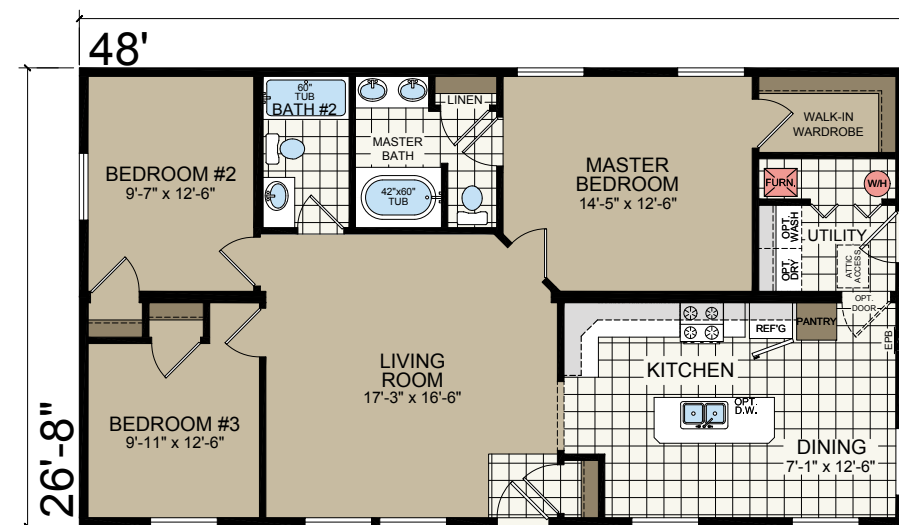
Shown with Optional Elevation and Site-built Garage by Others

# VIRGINIA

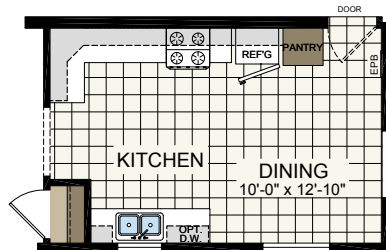
NM 5633  
28'x 56'  
3 Bed, 2 Bath  
1493 sq. ft.



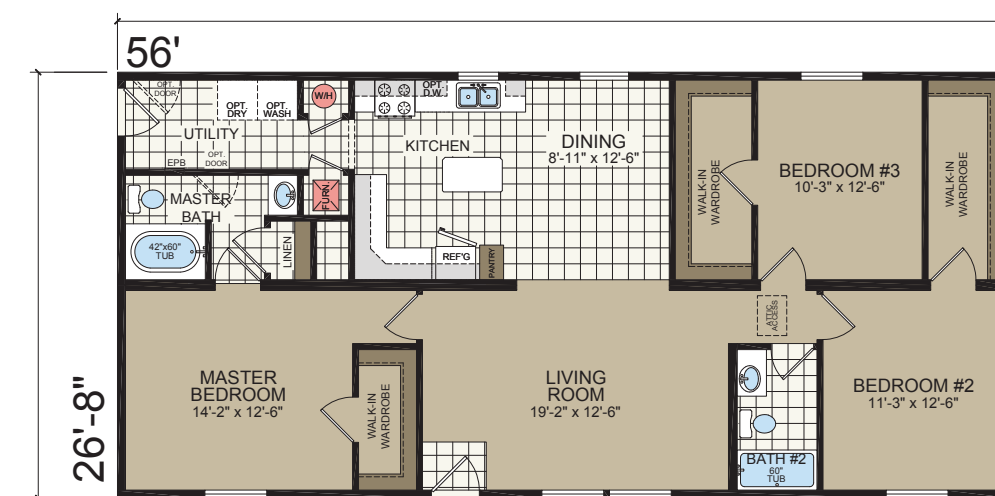
Shown with Optional Elevation, Site-built Porch and Garage by Others



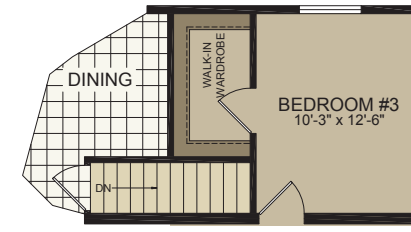
OPTIONAL BASEMENT



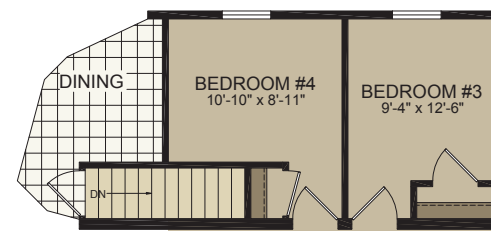
OPTIONAL KITCHEN



OPTIONAL WALK-IN PANTRY w/ BASEMENT



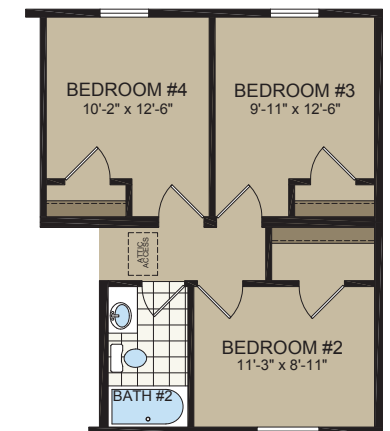
OPTIONAL BASEMENT



OPTIONAL 4th BEDROOM w/ BASEMENT



OPTIONAL WALK-IN PANTRY



OPTIONAL 4th BEDROOM



# NEWPORT

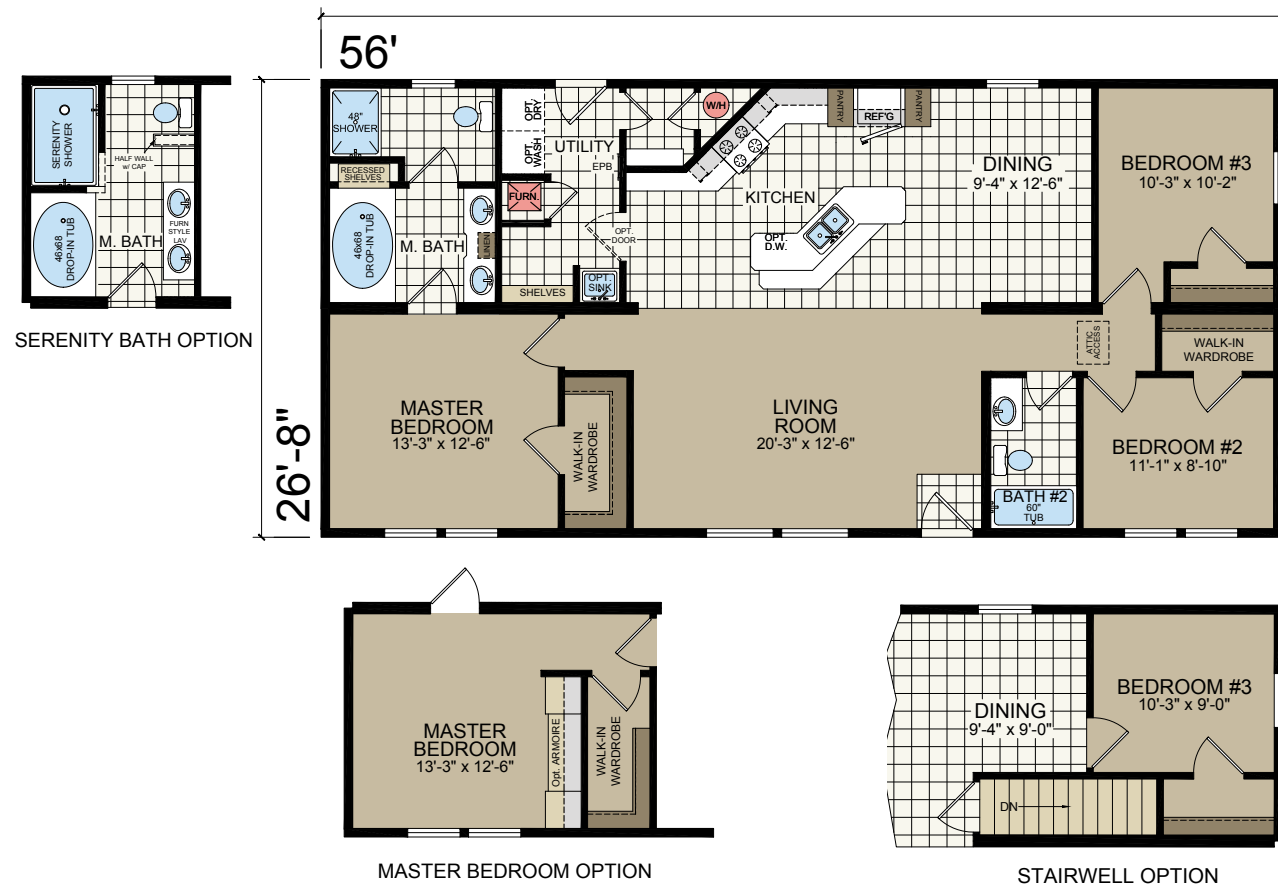
NM 5631  
28' x 56'  
3 Bed, 2 Bath  
1493 sq. ft.



Shown with Optional Elevation and Site-built Porch by Others



# NEWPORT



TAKE A VIDEO TOUR OF THIS HOME





# CRANBERRY

NM 5629  
28' x 56'  
3 Bed, 2 Bath  
1493 sq. ft.



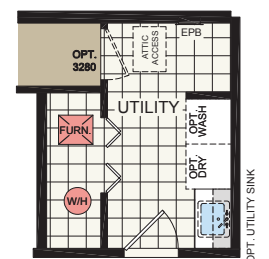
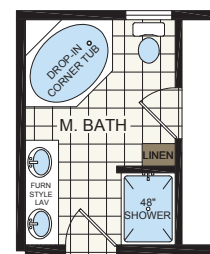
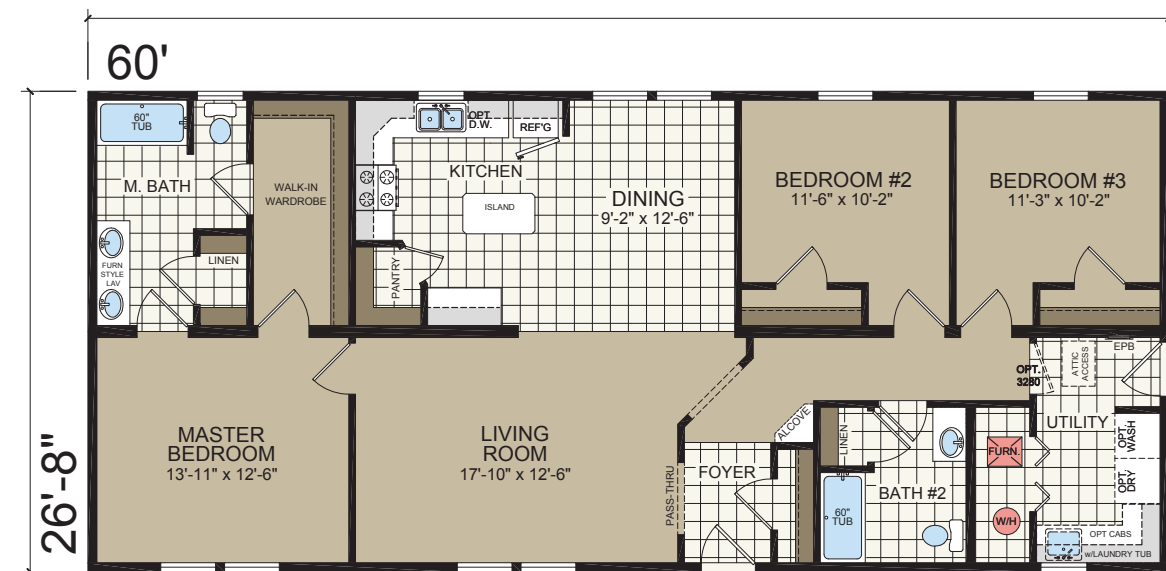
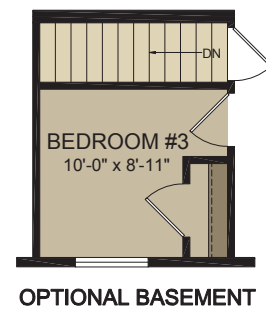
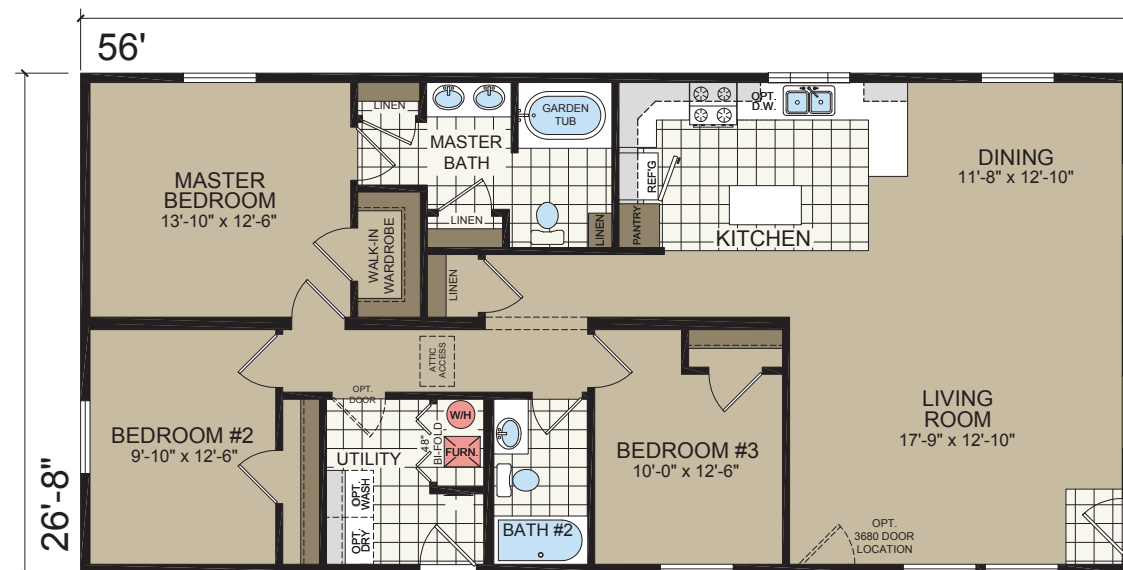
Shown with Site-built Garage by Others

# MYRTLE

NM 6033  
28' x 60'  
3 Bed, 2 Bath  
1600 sq. ft.



Shown with Optional Elevation, Site-built Porch and Garage by Others





# MALIBU

NM 6035  
28'x 60'  
3 Bed, 2 Bath  
1600 sq. ft.



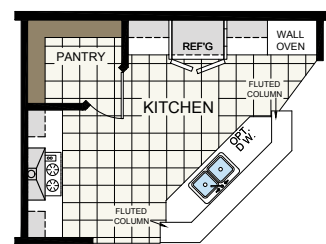
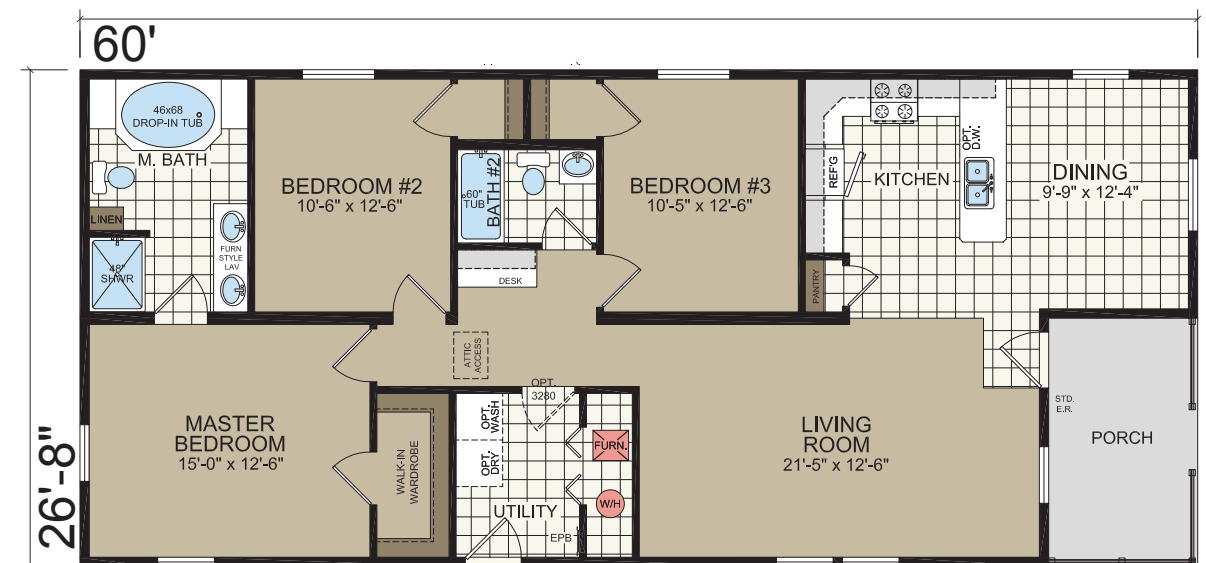
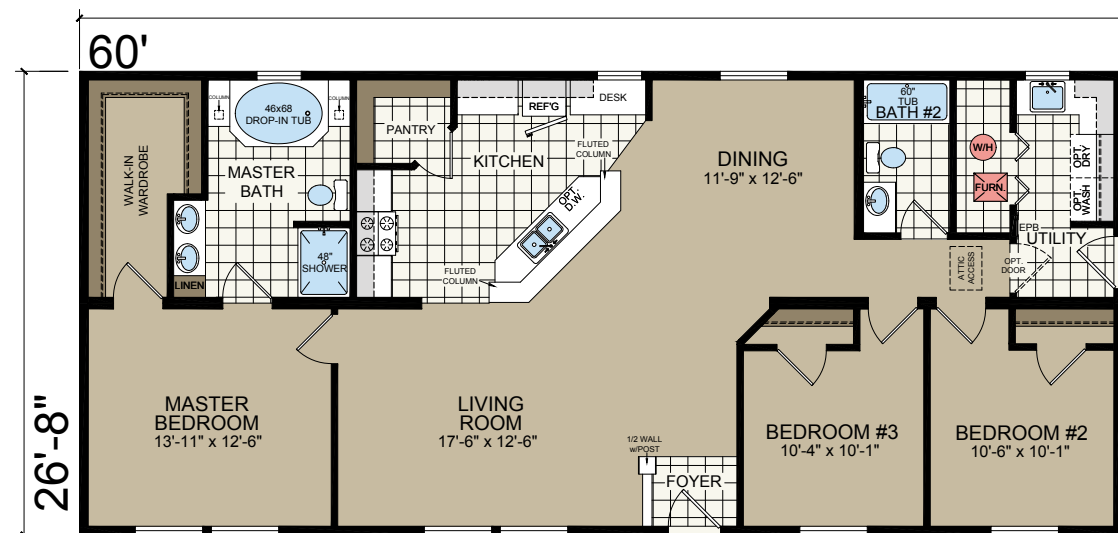
Shown with Optional Elevation, Site-built Porch and Garage by Others

# OCEANSIDE

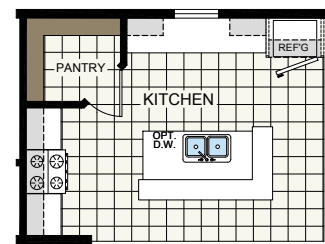
NM 6031  
28'x 60'  
3 Bed, 2 Bath  
1493 sq. ft.



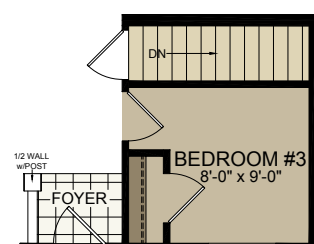
Shown with Optional Elevation, Site-built Porch and Garage by Others



OPTIONAL ULTIMATE KITCHEN



OPTIONAL KITCHEN



OPTIONAL BASEMENT



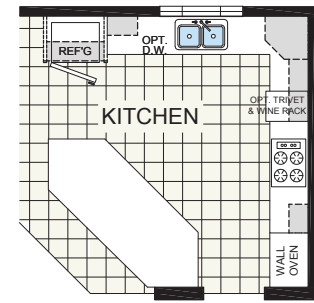
# SAVANNAH

NM 6039  
32' x 60'  
3 Bed, 2 Bath  
1800 sq. ft.

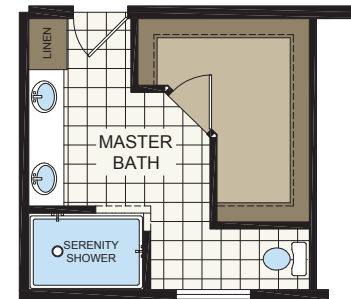


Shown with Optional Elevation

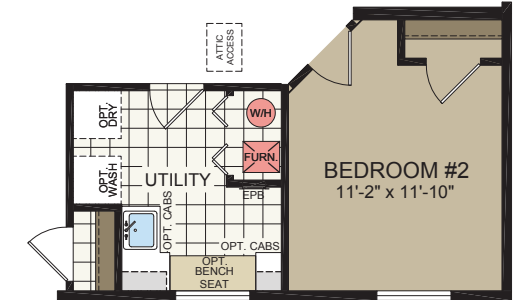
# SAVANNAH



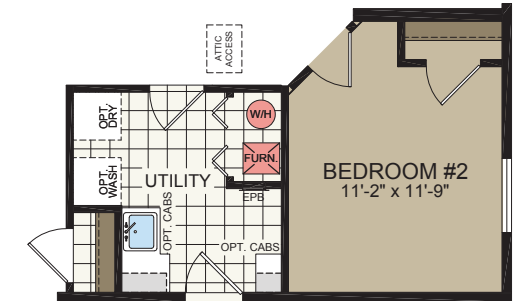
OPTION ULTIMATE KITCHEN



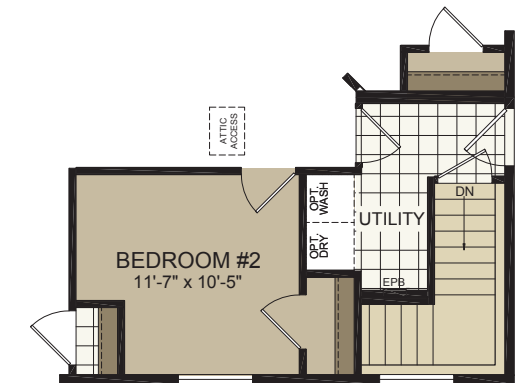
OPTION SERENITY SHOWER



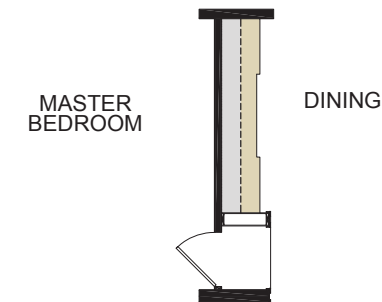
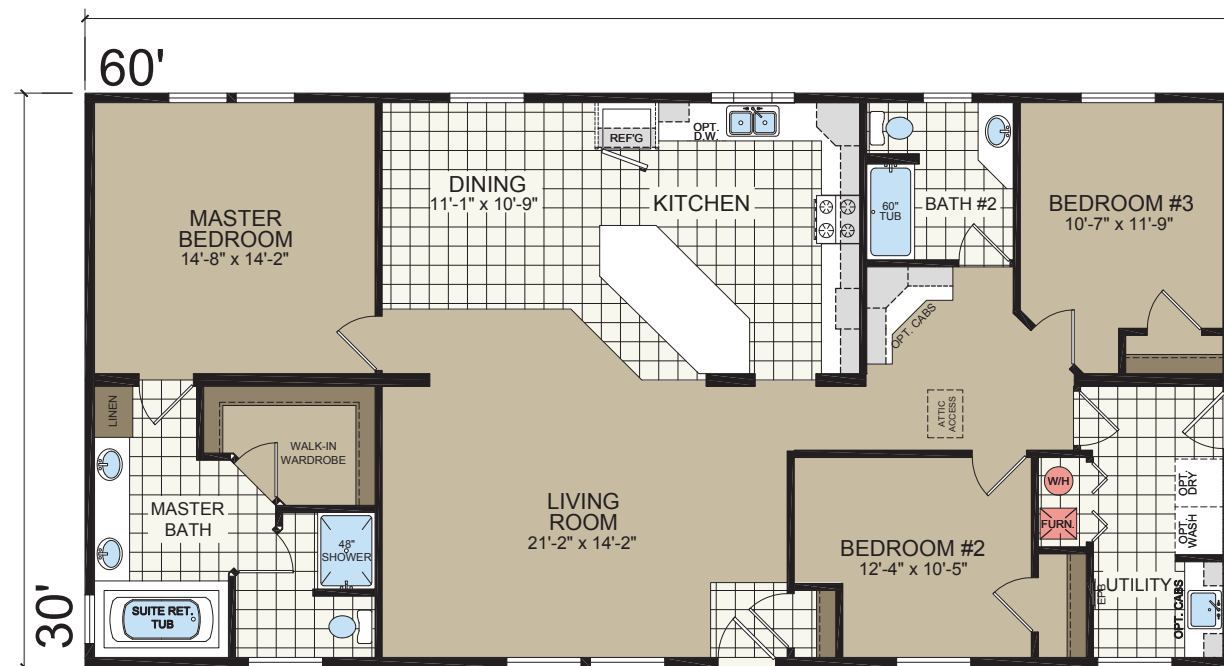
OPTION UTILITY ROOM



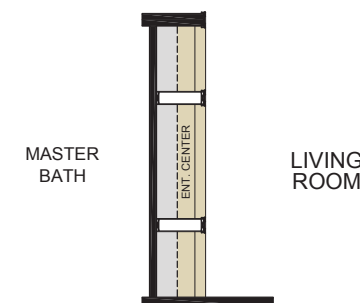
OPTION UTILITY ROOM & FRONT GARAGE ENTRY



STAIRWELL OPTION FURNACE, W/H IN BASEMENT



OPTION VANISHING MATE LINE (DINING ROOM/HUTCH)



OPTION VANISHING MATE LINE (LIVING ROOM)



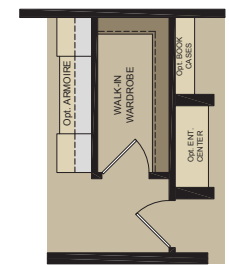
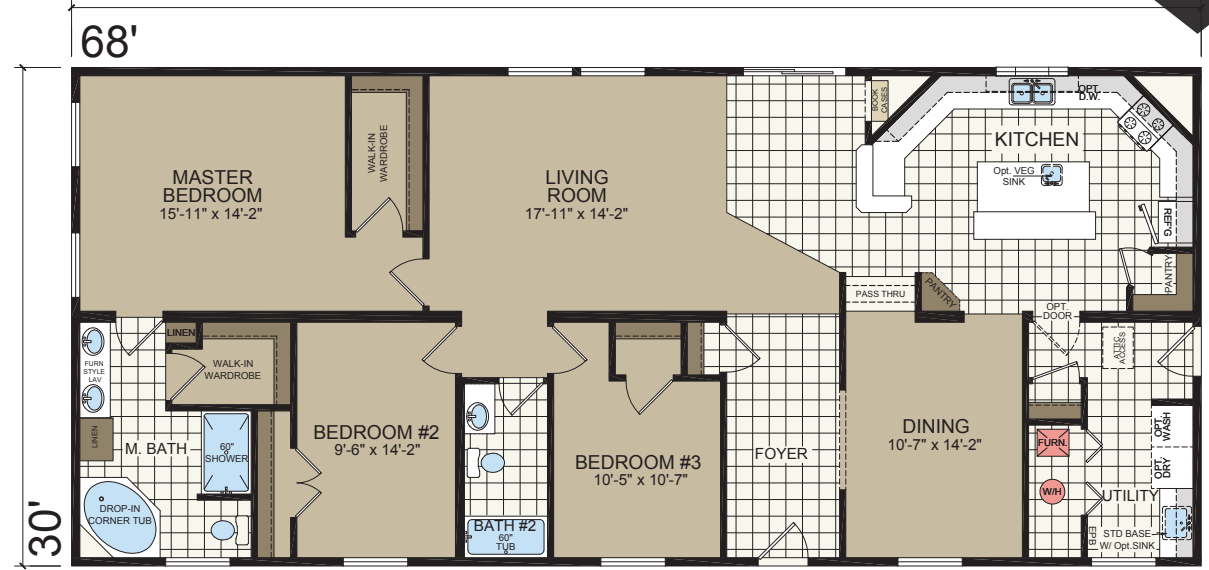
# DAKOTA

NM 6815  
32' x 68'  
3 Bed, 2 Bath  
2040 sq. ft.

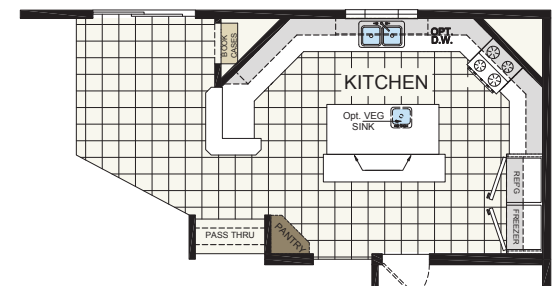
# DAKOTA



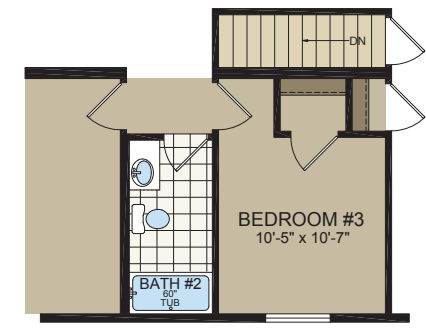
Shown with Optional Elevation, Site-built Porch and Garage by Others



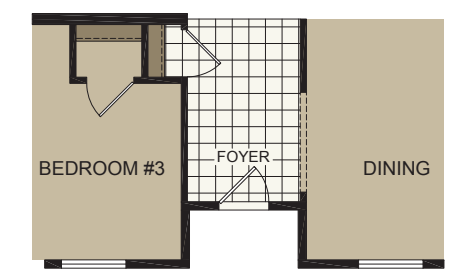
OPT. ARMOIRE and/or  
OPT. ENT. CENTER & BOOKCASES



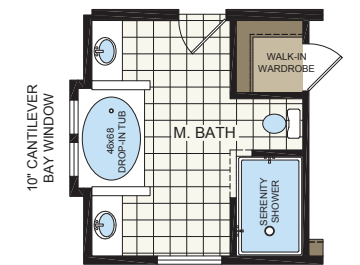
OPT. KITCHEN



OPT. BASEMENT

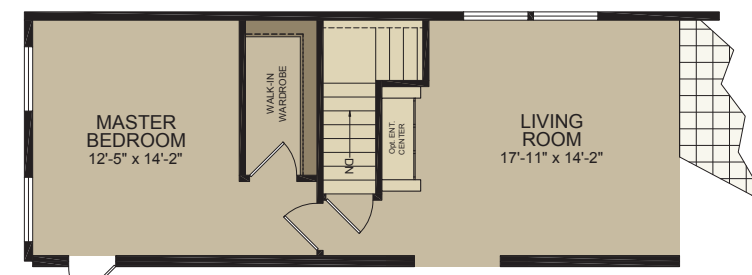
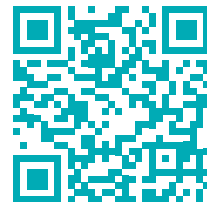


OPT. RECESSED ENTRY

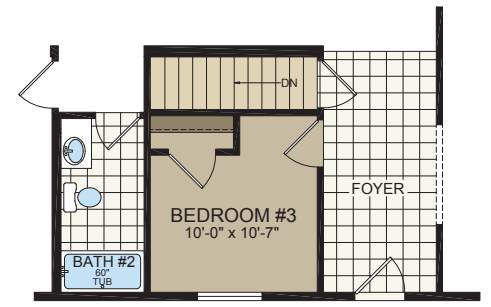


OPTION SERENITY BATH

TAKE A  
VIDEO TOUR  
OF THIS HOME



OPT. BASEMENT # 2



OPT. BASEMENT # 3



# INDIAN

NM 6401  
32' x 64'  
4 Bed, 2 Bath  
1920 sq. ft.



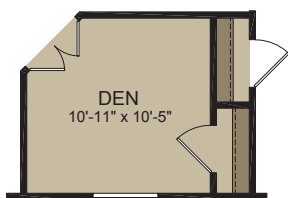
Shown with Optional Elevation, Site-built Porch and Garage by Others

# APOLLO

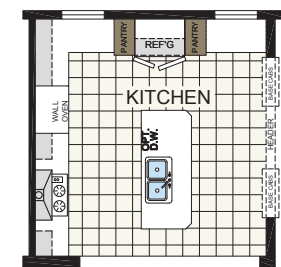
NM 7201  
32' x 72'  
4 bed-2 bath  
2160 sq.ft..



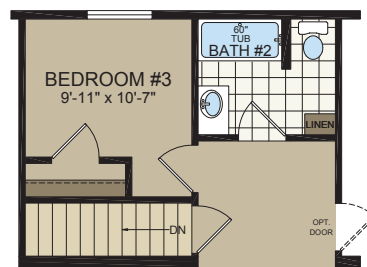
Shown with Optional Elevation, Site-built Porch and Garage by Others



OPTIONAL DEN



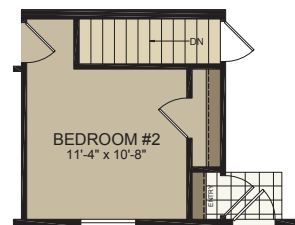
OPTIONAL ULTIMATE KITCHEN



OPTIONAL BASEMENT



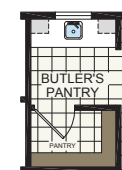
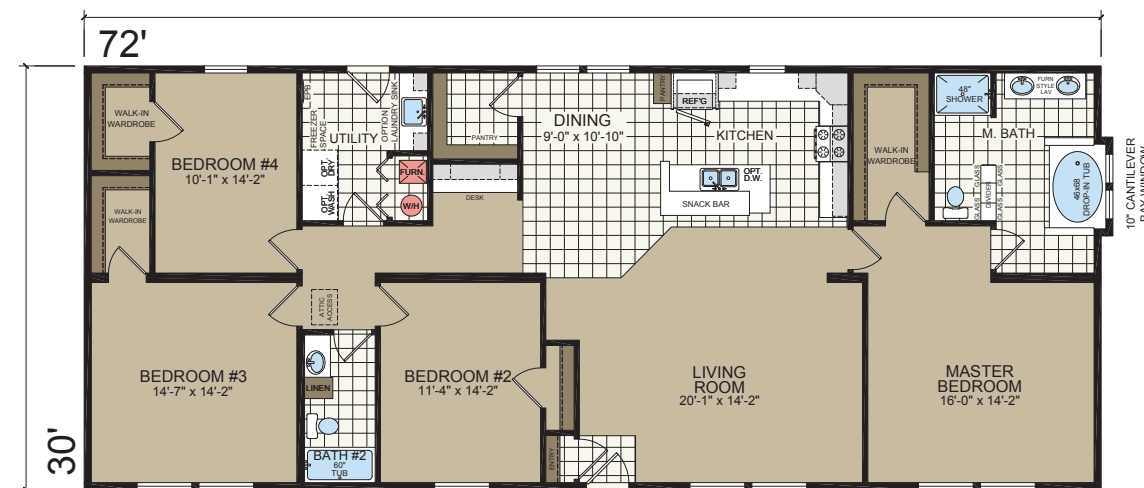
OPTION THEATER ROOM



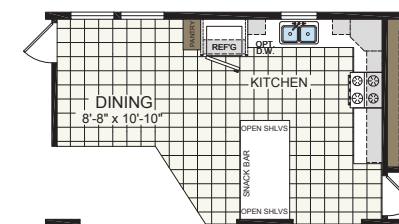
STAIRWELL OPTION



OPTION ENT. CENTER



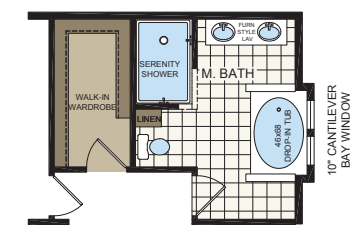
OPTION BUTLER'S PANTRY



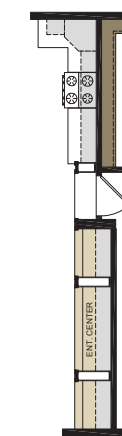
OPTION KITCHEN



OPTION CLOSET ORGANIZER



OPTION MASTER BATH



OPTION VANISHING MATE LINE

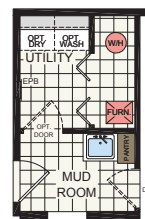
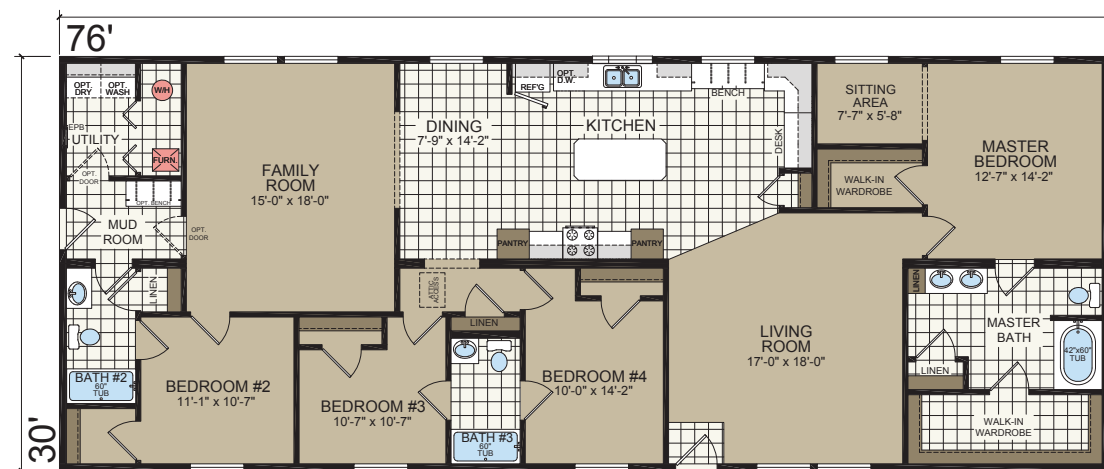


# RED CEDAR

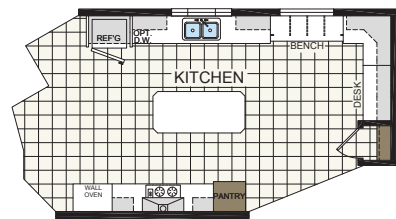
NM 7607  
32' x 76'  
4 bed-3 bath  
2280 sq. ft.



Shown with Optional Elevation, Site-built Porch and Garage by Others



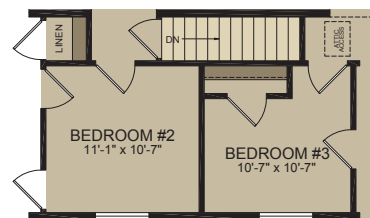
OPTIONAL UTILITY SINK



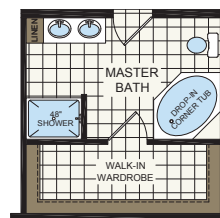
OPTIONAL ULTIMATE KITCHEN



OPTIONAL WALK-IN WARDROBE



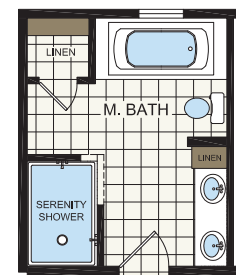
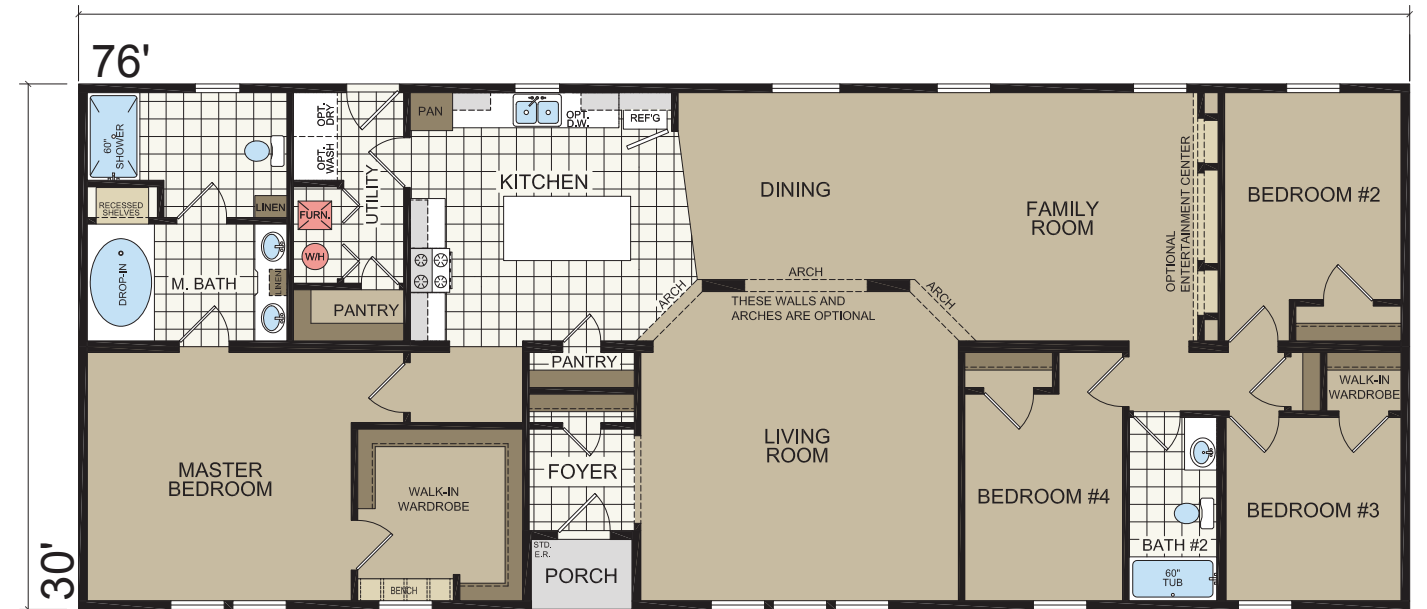
OPTIONAL BASEMENT



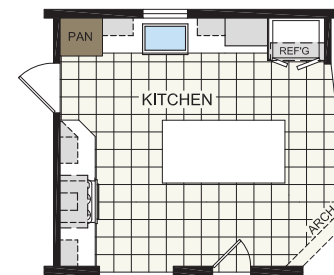
OPTIONAL MASTER BATH

# CAROLINA

7611  
32' x 76'  
4 bed-3 bath  
2280 sq. ft.



OPTION SERENITY BATH



OPTION ULTIMATE KITCHEN #2





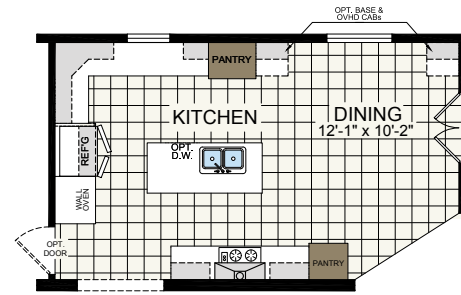
# FENTON

HS 60301  
32' x 60'  
3 bed-2 bath  
1820 sq. ft.

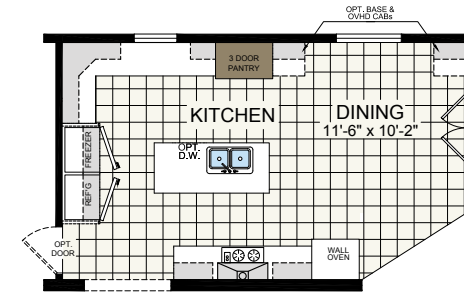


Shown with Optional Elevation

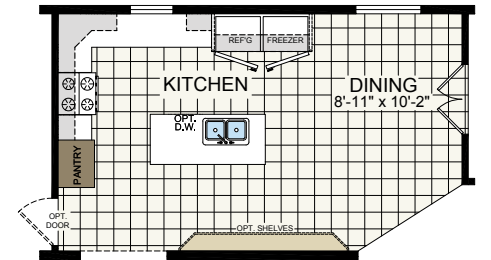
# FENTON



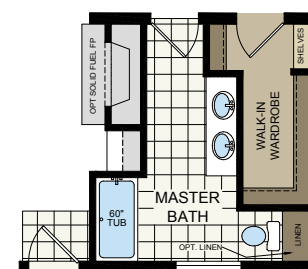
OPTIONAL ULTIMATE KITCHEN A



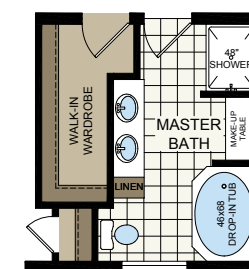
OPTIONAL ULTIMATE KITCHEN B



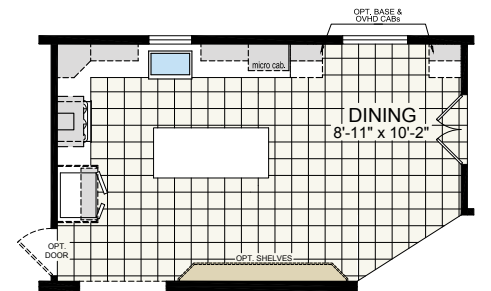
OPTIONAL KITCHEN LAYOUT



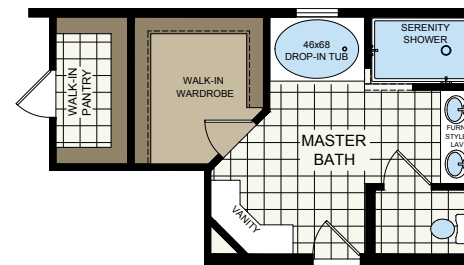
OPTIONAL MASTER BATH #2  
SHOWN w/ OPT. FIREPLACE  
(N/A IN ALL STATES, SEE STATE REQ. SHEET)



OPTIONAL MASTER BATH #1



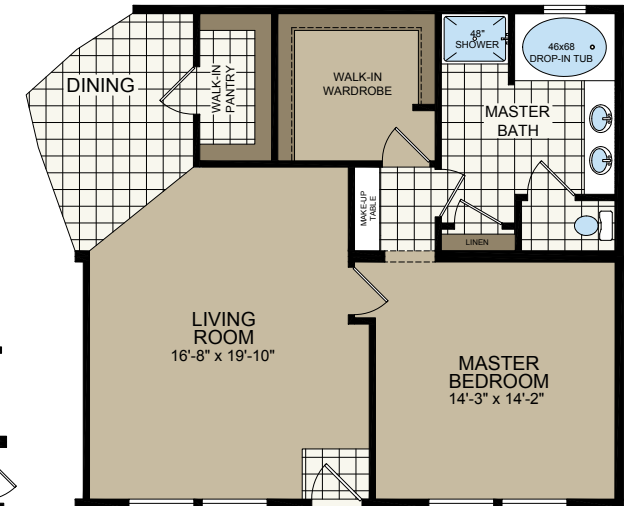
OPTIONAL ULTIMATE KITCHEN 2



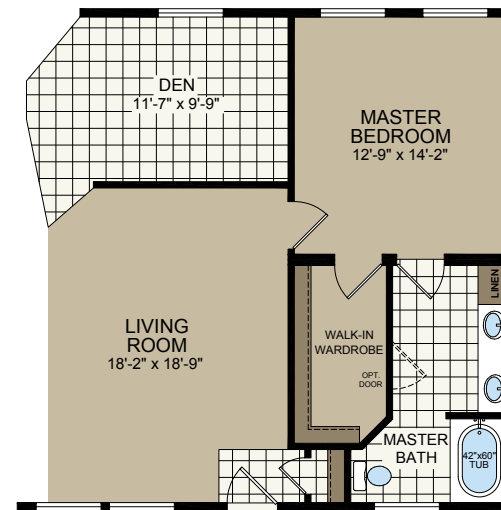
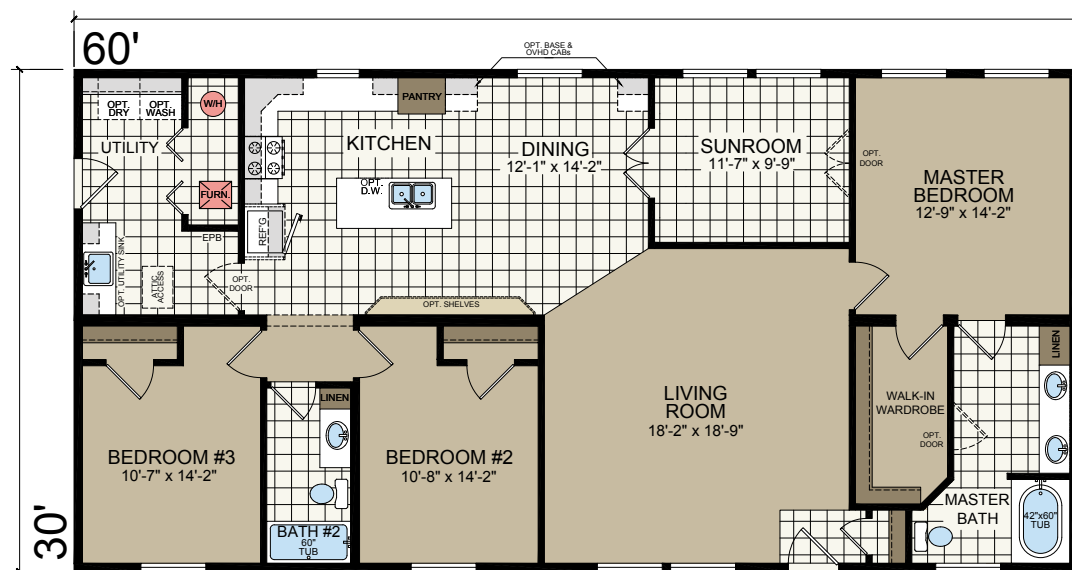
OPTIONAL SERENITY BATH #1  
(NO SUNROOM)



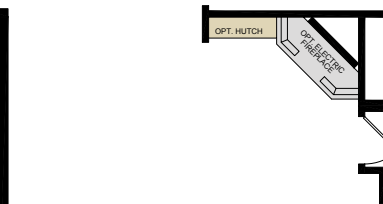
OPTIONAL SERENITY BATH #2



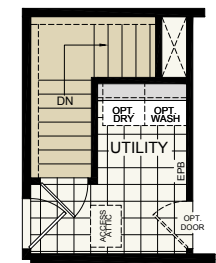
OPTIONAL MASTER BATH #3  
(NO SUNROOM)



OPTIONAL DEN



OPTIONAL ELECT. FIREPLACE & OPT. HUTCH  
(AVAILABLE WITH MSTR. BATH OPT. #3, SERENITY,  
AND SUITE RETREAT ONLY)



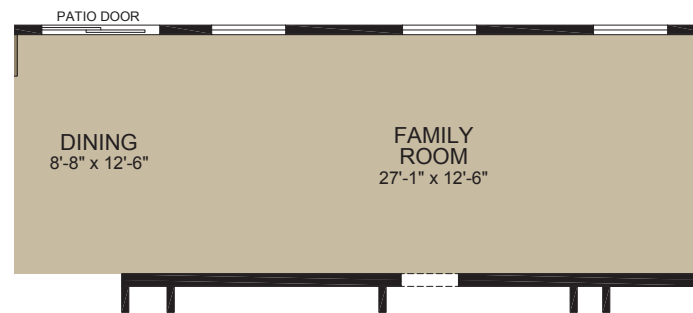
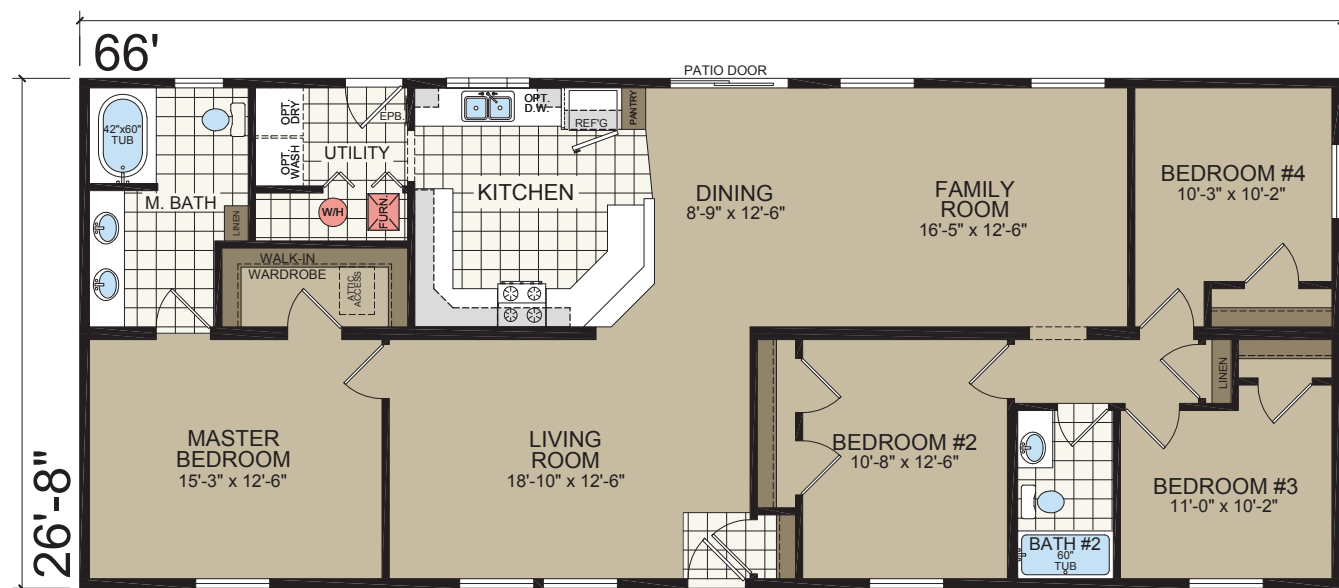
OPTIONAL STAIRWELL  
(NO FURNACE AND W/H INCLUDED)



HS 66305  
28' x 66'  
4 bed-2 bath  
1760 sq. ft.



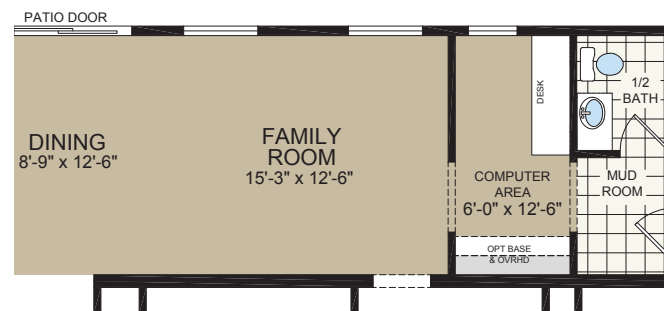
Shown with Optional Elevation and Site-built Porch by Others



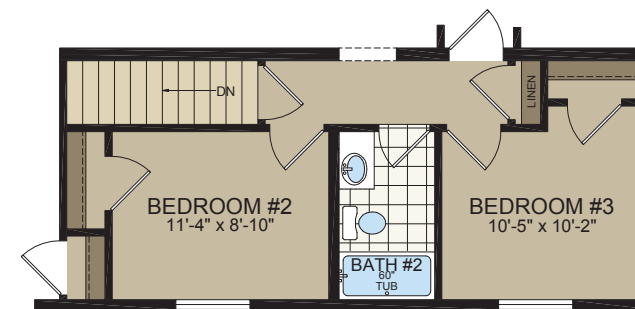
OPTIONAL FAMILY ROOM



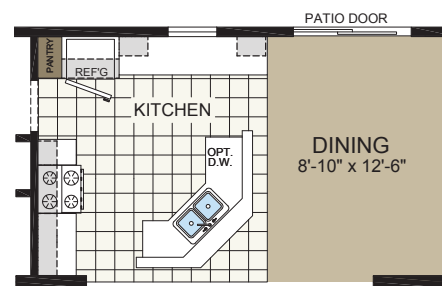
OPTIONAL 5th BEDROOM



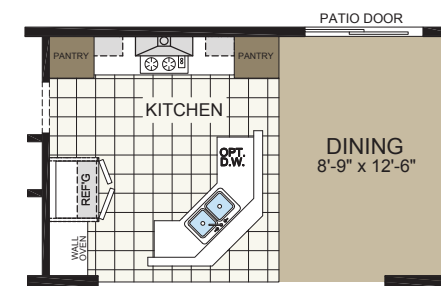
OPTIONAL MUD ROOM & COMPUTER ROOM



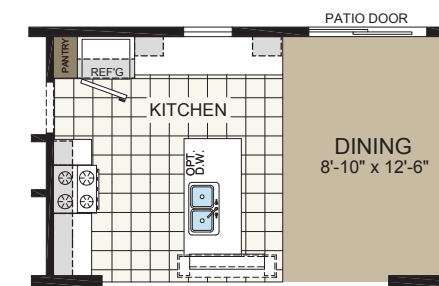
OPTIONAL BASEMENT



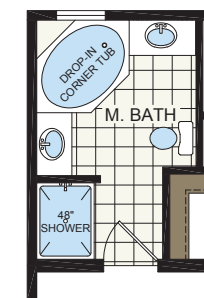
OPTIONAL KITCHEN #1



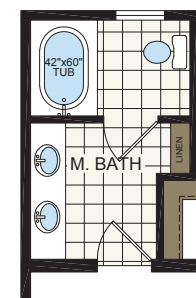
OPTIONAL ULTIMATE KITCHEN #1



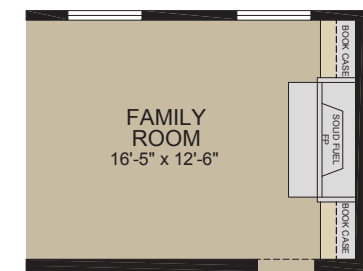
OPT. KITCHEN #2



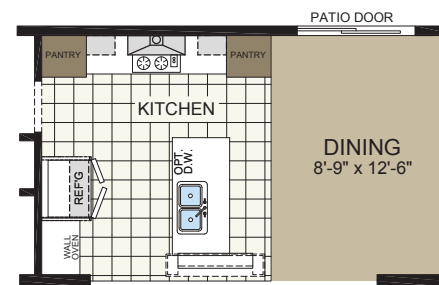
OPTIONAL MASTER BATH #1



OPTIONAL MASTER BATH #2



OPTIONAL FAMILY ROOM FIRE PLACE



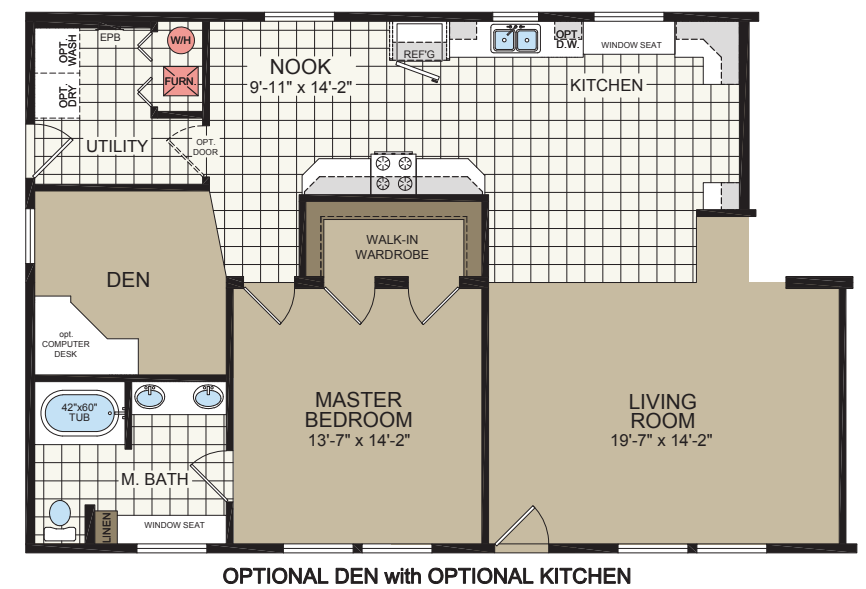
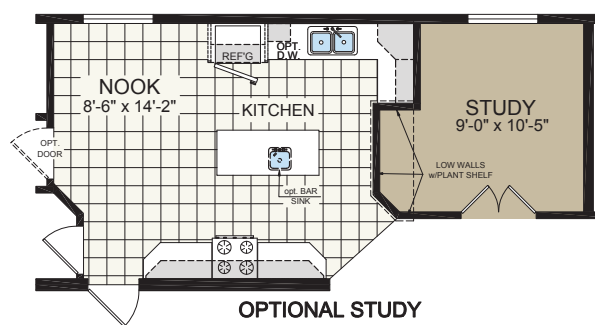
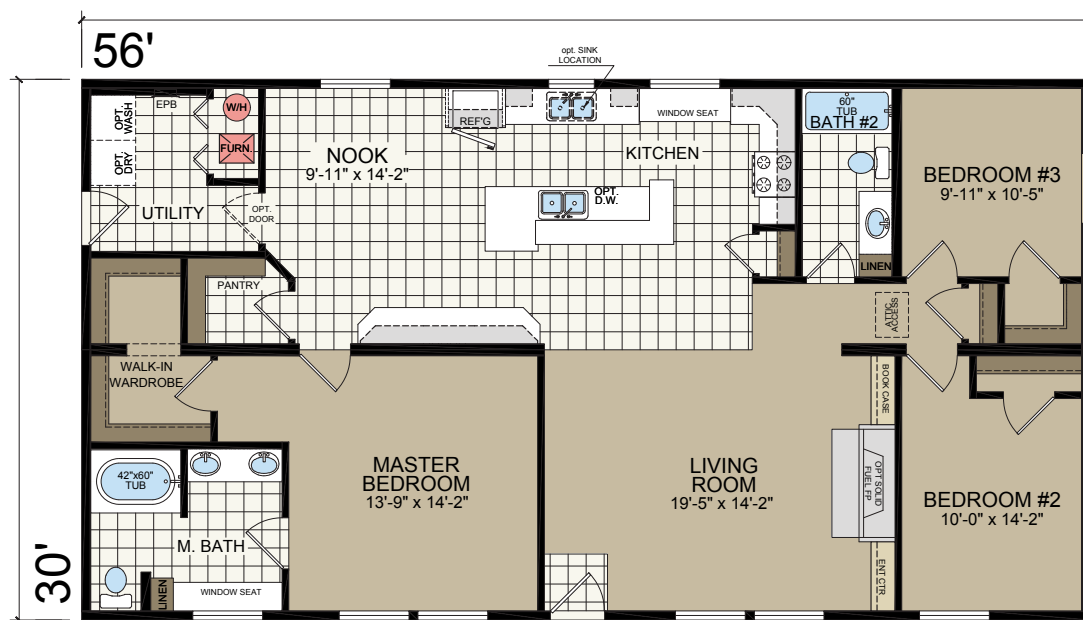
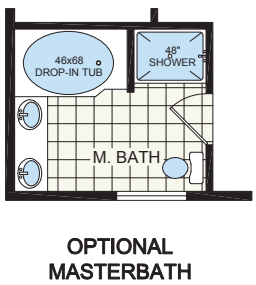
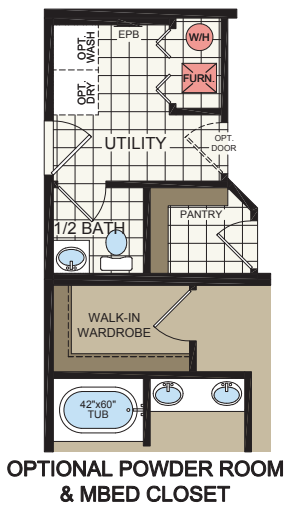
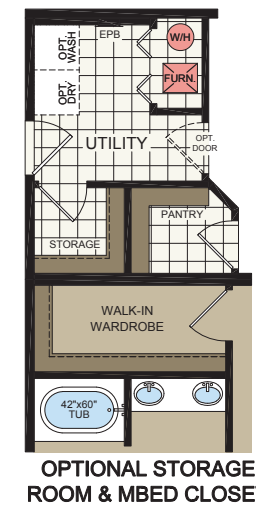
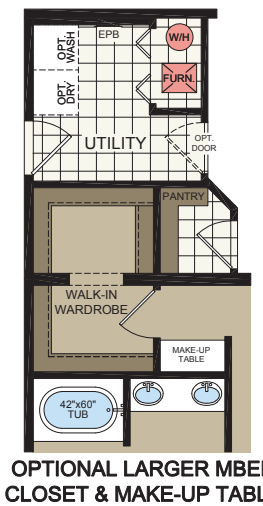
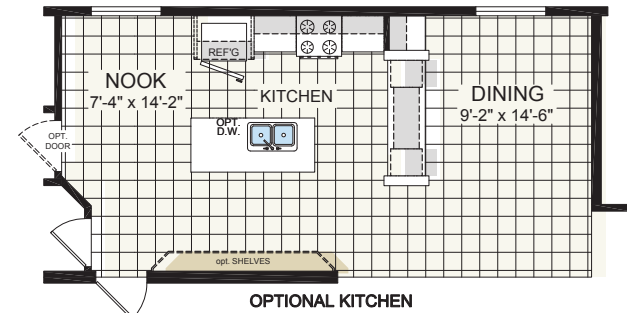
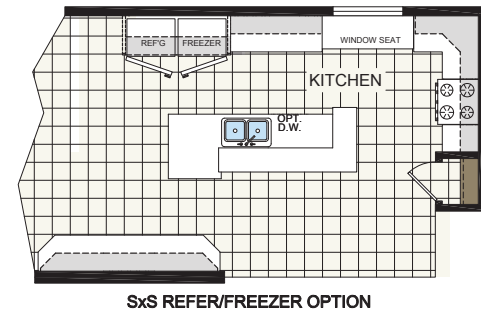
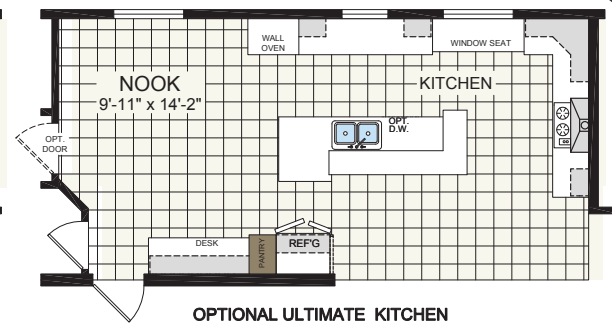
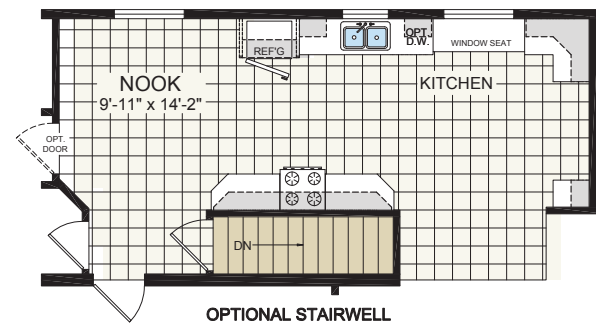
OPTIONAL ULTIMATE KITCHEN #2



LS 56301  
32' x 56'  
3 bed-3 bath  
1680 sq. ft.



Shown with Optional Elevation





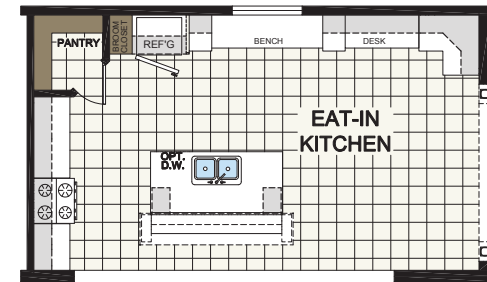
# KENNEDY

LS 76301  
32' x 76'  
3 bed-2 bath  
2280 sq. ft.

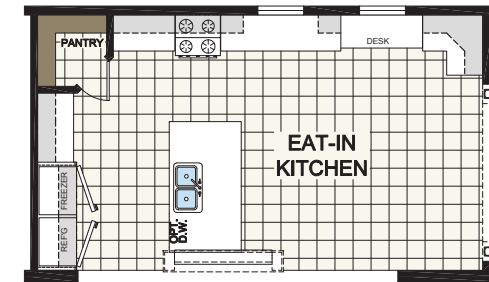


\*Shown with Optional Elevation

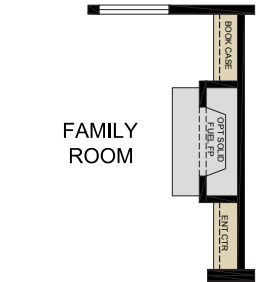
# KENNEDY



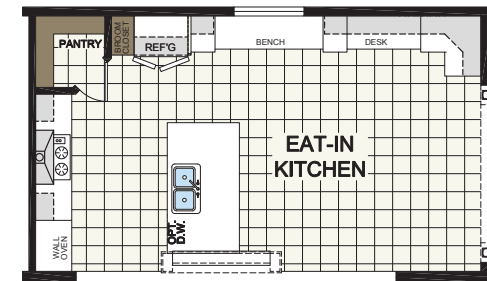
OPTIONAL ISLAND (STD) KITCHEN



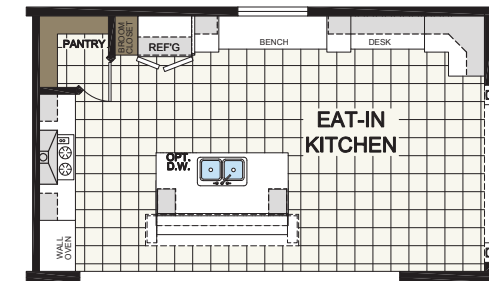
OPTIONAL SIDE BY SIDE REFER/FREEZER KITCHEN



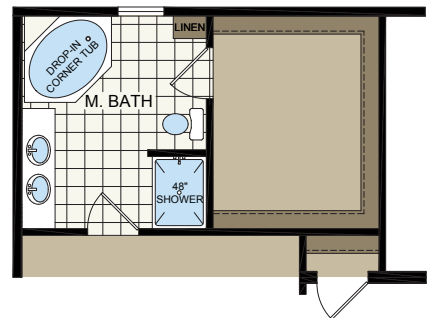
OPTIONAL FIREPLACE - ENTERTAINMENT CTR.



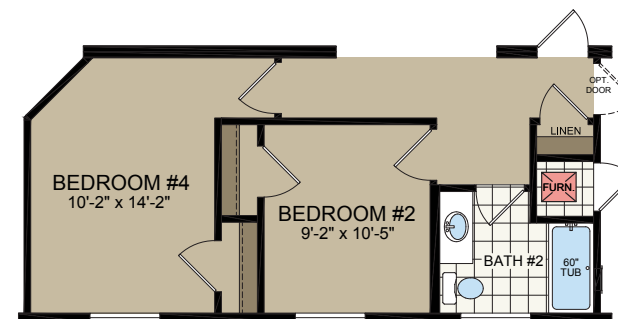
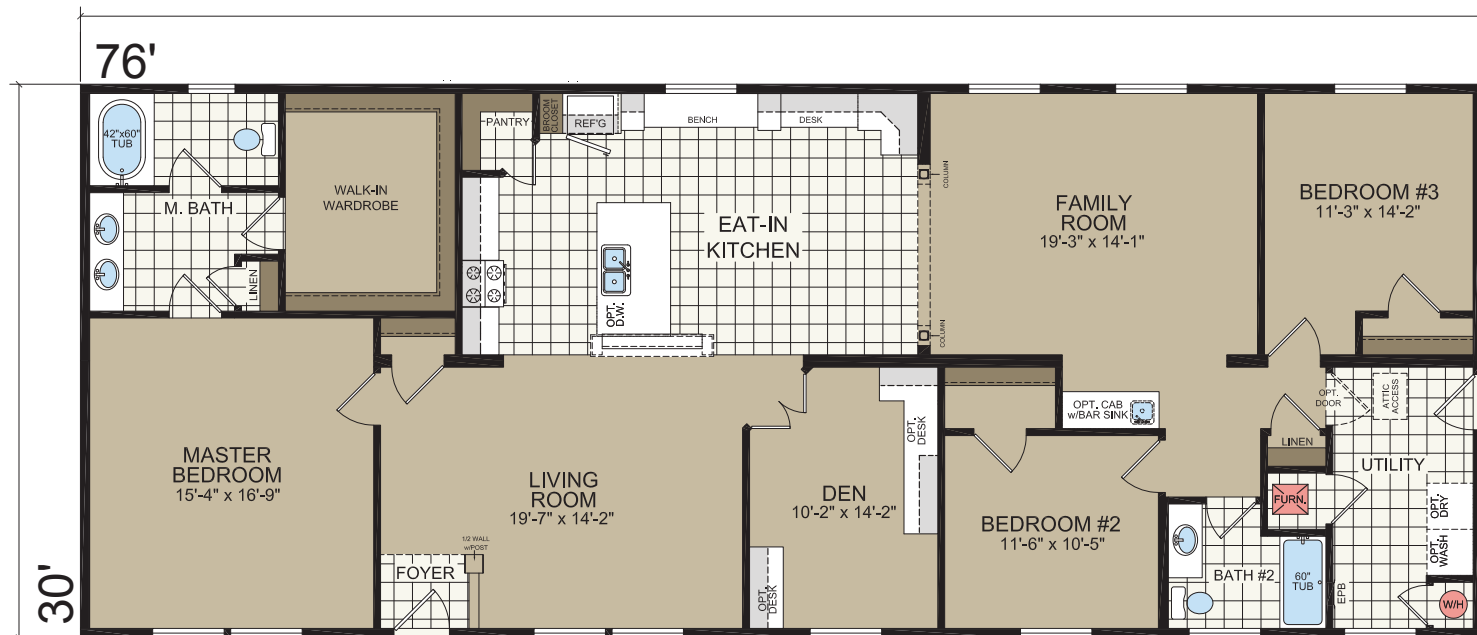
OPTIONAL ULTIMATE KITCHEN



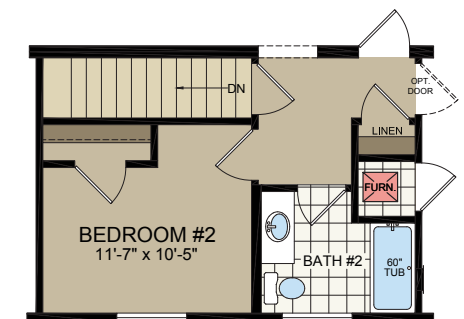
ULTIMATE KITCHEN w/ OPT. ISLAND



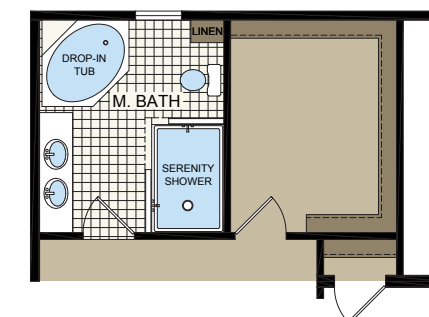
OPTIONAL MASTER BATH LAYOUT



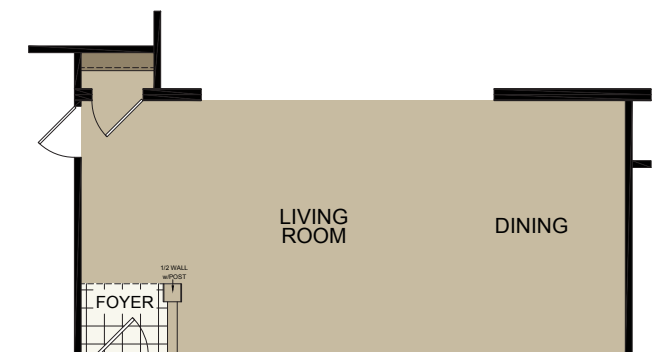
OPTIONAL 4th BEDROOM N/A w/ BASEMENT OPTION



OPTIONAL BASEMENT



OPTIONAL SERENITY BATH



OPTIONAL FORMAL DINNING-ROOM

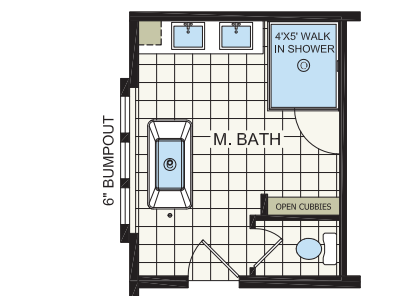
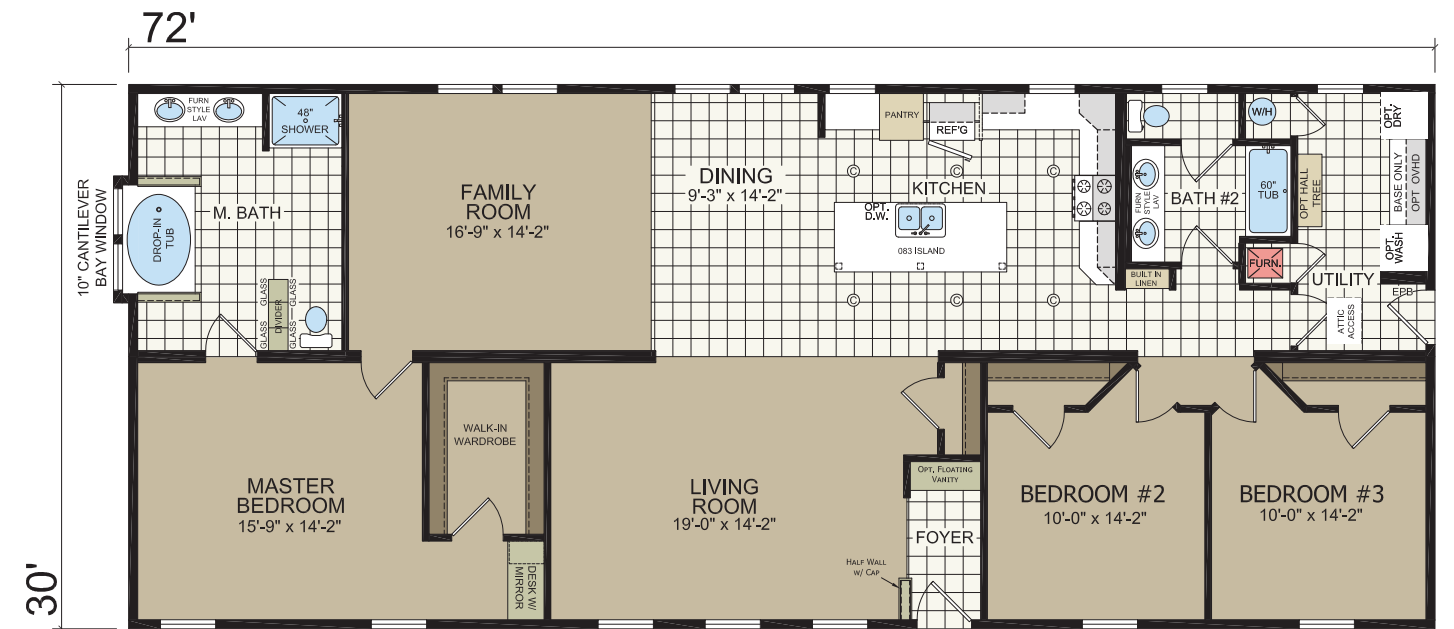


# OMAHA

NM7205  
32' x 72'  
3 bed-2 bath  
2160 sq. ft.



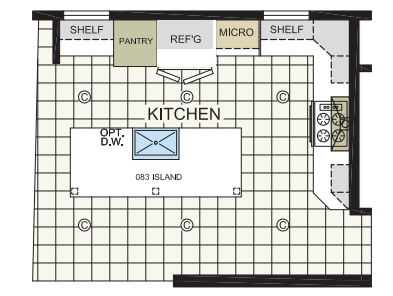
# OMAHA



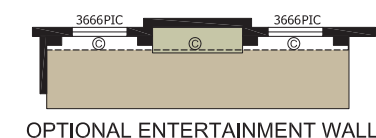
OPTIONAL RADIANT SPA BATH



OPTIONAL BASEMENT



OPTIONAL ULTIMATE KITCHEN II



OPTIONAL ENTERTAINMENT WALL



# 2017 NEW MOON II MODULAR

## FRAMES & FLOORS

- Open-Web Joist Floor 19.2" O.C.
- 5/8" 4'x8' OSB Floor Decking T&G
- Double 2 x 10 Rim Joist
- LVL Marriage Line Rim Joist
- Baseboard Registers w/ 6" Round Boots
- 16 oz. Plush Carpet
- 5 Lb. Rebound Carpet Pad
- Linoleum in Wet Areas & Foyer

## CEILING & ROOF

- 8' Flat Ceilings w/ Stomped Textured Finish
- 5/12 Roof Pitch w/ Rafter Spacing 24" O.C.
- 7/12 Roof Pitch STD 30' Wide
- R-40 Cellulose Insulation
- 7/16" OSB Roof Sheathing
- 30 Yr. Fiberglass Dimensional Shingles
- 8" Vented Eaves
- White Alum Fascia
- Fully Vented Vinyl Soffit
- Roof Load Meets or Exceeds
- State Requirements

## EXTERIOR

- 2'x6' Wall Studs / 16" O.C.
- R-19 Insulation
- 7/16" OSB Sheathing
- House Wrap
- Dutch Lap 4" Vinyl Siding
- 15" Raised Panel Shutters - Doorside

## EXTERIOR DOORS & WINDOWS

- Vinyl Single Hung, Low "E" w/ Grids
- 36 x 80 White 6 Panel w/ Storm - Front Door
- 36 x 80 White 6-Panel Fire Rated - Rear Door
- Brush Nickel Lockset / Deadbolt

## ADDITIONAL

- Full-Length Drapes LVR, FR, DR
- Decorative Rod in LVR, FR, DR
- Valances - Master Bedroom / Kitchen
- Platinum Chandelier
- Platinum Light Fixtures
- Wire Closet Shelving
- 2" PVC Mini Blinds T/O

## INTERIOR WALLS & DOORS

- 2'x4' 24" O.C.
- 2'x6' Plumbing Walls
- 1/2" Drywall T/O
- Wood Tone 6-Panel Int Doors to Match Cabs Except for Creston Oak Cabinets which are only available with White 6-Panel Int Doors
- Nickel Round Knobs / 3 Mortised Hinges
- Metal Bi-Fold - VBP at Furnace, Water Heater,
- 2 1/4" Door & Window Casing
- 2 1/4" Base Moulding
- Hardwood Door and Window Jamb
- Finished Ceiling Joint T/O
- Flat Door Stop
- 2'x4' 16" O.C. Marriage Wall

## HEATING & PLUMBING

- 40-Gallon Electric Water Heater
- Water Shut-Offs at All Fixtures
- PEX Water Lines
- Schedule 40 PVC Drain / Vent Lines
- One (1) Frost-Free Exterior Faucet w/ Shut-Off Per Print
- Plumb for Washer - Per Plan
- Electric Furnace

## KITCHEN & BATH

- 30" Deluxe Electric Range
- 18 CF Over/Under Refer
- 30" Range Hood w/Charcoal Filter
- Stainless Steel Sink
- Can Lights in Kitchen - VBP
- Ceramic Tile Between Range/Range Hood
- 60" 1-Piece Fiberglass Oval Drop-In (VBP)
- 48" or 60" 1-Piece Fiberglass Shower or Tub/Shower - VBP
- Pivot Shower Door for 48" or 60" Shower - VBP
- 60" 1-Piece Fiberglass Tub - Bath 2
- Metal Faucets
- Elongated China Commode
- White China Lavs
- Lighted Bath Vents - Eave Vent / Side Discharge
- Platinum Vanity Light
- White Ceramic Tub/Shower Trim
- Trimmed Mirrors

## CABINETRY

- Hardwood Flat Panel Cabinets
- 1/2" Cabinet End Panels
- Hidden Hinges
- Countertops – Hi Pressure Laminate w/ Self Edge
- 4" Laminate Backsplash w/matching caulk
- 30" & 42" Overhead Cabinets -VBP
- Hardwood Stiles
- Cabinet Cove Trim
- Fluted Trim w / Top and Bottom
- Rosettes at Sink
- Drawers Over Doors - Kitchen
- Bank of Drawers - Kitchen
- 1/2" Adjustable Center Shelf O/H
- Grooved End Panels
- 3/4" Adjustable Shelving
- Nickel Cabinet Handles
- Full-Length Corner Cabs w/Glass, Fluted Trim, & Rosettes - VBP
- Valance Board at Kitchen Window
- Bottom Cabinet Trim
- Extendable Drawer Guides
- Ceramic Tile Between
- Range & Range hood

## ELECTRICAL

- 200 AMP Service w/ 30-40 Box
- 12/2 Copper Wire Thru Out
- Wire for Dryer
- Smoke Detectors - All Bedrooms & LR
- GFI Receipts - Kit., Baths, (2) Exterior
- Black Lantern at All Exterior Doors
- One (1) Phone Jack is Standard



Due to continuous product development and improvement, prices, specifications and material are subject to change without notice or obligation. Square footage and other dimensions are approximate. Included images are artist renderings and are not intended to be an accurate representation of the homes. Renderings and Floor Plans may be shown with optional features and / or third party additions that may not be available in all regions or situations. Exterior Renderings may include onsite builder built options not offered by Champion Home Builders, Inc.





308 Sheridan Drive | Topeka, IN 46571  
T 800-777-6637 | F 260-593-2401  
[www.redmanhomesofindiana.com](http://www.redmanhomesofindiana.com)

CHAMPION®

MANUFACTURED BEAUTIFULLY™