



# GENESIS SERIES

REDMAN  HOMES.®

# ABOUT US

**Redman Homes is one of the oldest and most respected homebuilders in America. Founded in 1937, Redman pioneered factory home construction and continues to lead advances in quality control, design and home value today. Through experience and innovation we've harnessed production line efficiency and, paired with our high-quality craftsmanship, created a process that delivers homes that meet our superior standards.**

## **A place to call your own**

Beyond just building you a house, we're committed to providing you and your family with a home to make memories in that will last a lifetime. Somewhere you can feel secure. A place you can call your own. A home that fits your lifestyle and has your own personal touch. Whether you're an active young family constantly on the go or empty nesters ready to simplify, just relax – we have a home that's right for you.

## **More choice, more freedom**

Our vast selection of floor plans, color choices and options give you the freedom to express your personal style and fit your home around your life. Using our online Kitchen Designer, it's easy to create the kitchen of your dreams.

## **Building the best**

We build each and every home to meet or exceed a strict national or state building code, and we set even higher standards for ourselves. Focusing on the things you don't see as well as the things you do, we monitor and inspect our homes at every stage of construction. From the plumbing system to the electrical wiring, from the kitchen cabinets to the closets in the bedrooms – every home we build undergoes rigorous quality inspections to ensure we're providing you with nothing but our best.

## **The quality you expect**

To build the best, we use the best. To meet your expectations of quality - and ours - we use only the highest-quality building materials and trusted national brand names. From insulation and fixtures to flooring and appliances, we only buy components from suppliers who share our commitment to quality. By using the best, we're confident we can build you a home with the lasting value you'll appreciate for years to come. Your housing consultant can tell you more about the specific brands used in our homes.

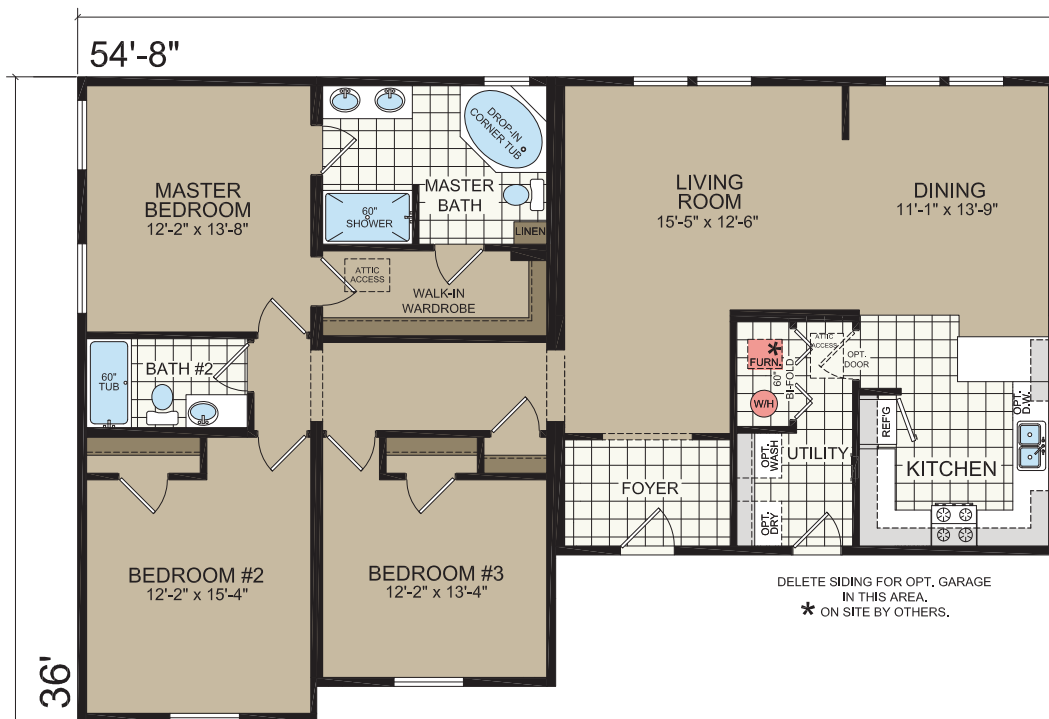


# The Charleston

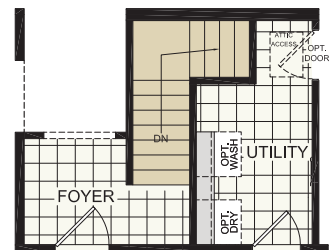
RM4003  
 36' x 54'8"  
 3 bed-2 bath  
 1638 sq. ft.



Shown with Site-Built Garage by Others



DELETE SIDING FOR OPT. GARAGE  
 IN THIS AREA.  
 \* ON SITE BY OTHERS.



OPTIONAL BASEMENT

\* FURNACE, WARM & RETURN AIR DUCTS N/A WITH THIS MODEL.  
 ON-SITE BY OTHERS

\* DESIGNATES FIELD WORK



# The Dawson

RM1023  
 30' x 64'  
 3 bed-2 bath  
 1754 sq.ft.



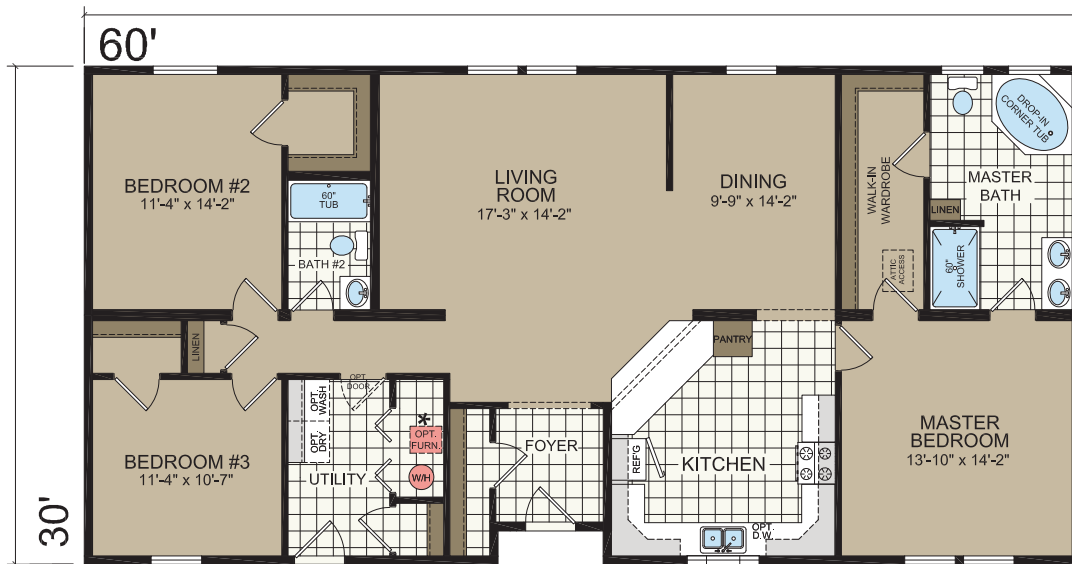


# The Milo

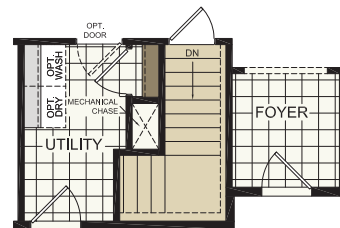
RM1025  
 30' x 60'  
 3 bed-2 bath  
 1787 sq.ft.



Shown with Site-Built Garage by Others



OPTIONAL 10" CANTILEVER BAY WINDOW



OPTIONAL STAIRWELL

\* (FURNACE, W/H & WARM AIR DUCTS ON-SITE BY OTHERS)

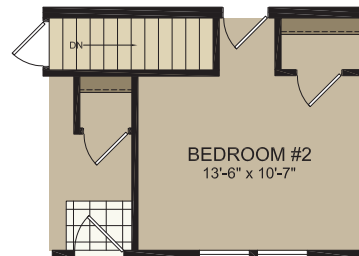
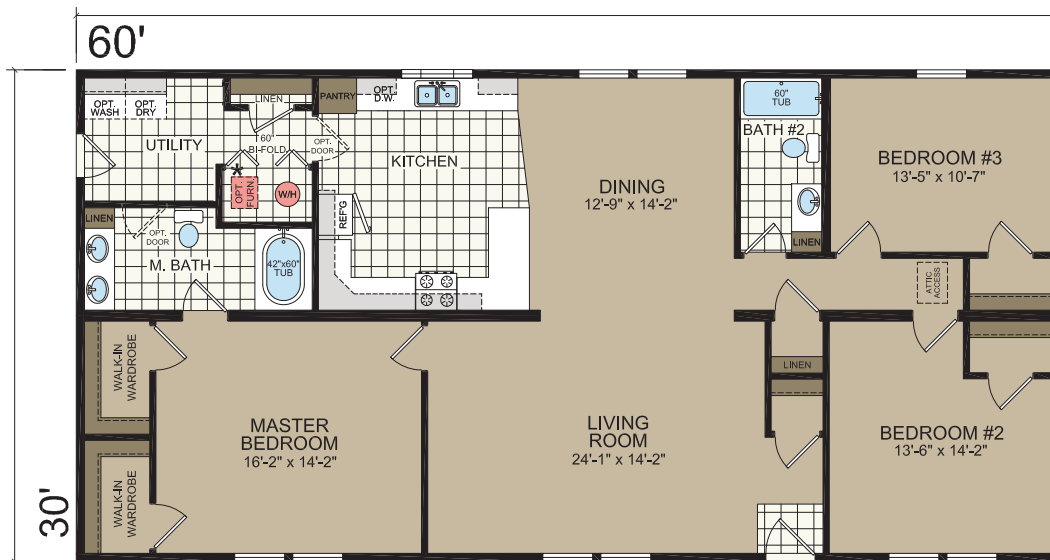


# The Manteno

RM1009  
 30' x 60'  
 3 bed-2 bath  
 1800 sq.ft.



Shown with Site-Built Garage by Others



OPTIONAL STAIRWELL





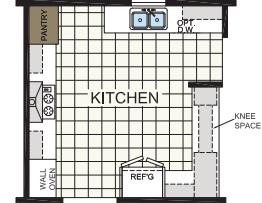


# The Hampton

RM1031-1  
 34'4" x 68'  
 3 bed-2 bath  
 2218 sq.ft.



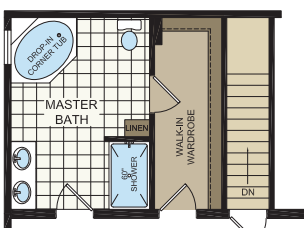
Shown with Site-Built Garage by Others



OPTIONAL ULTIMATE KITCHEN



34'-4"

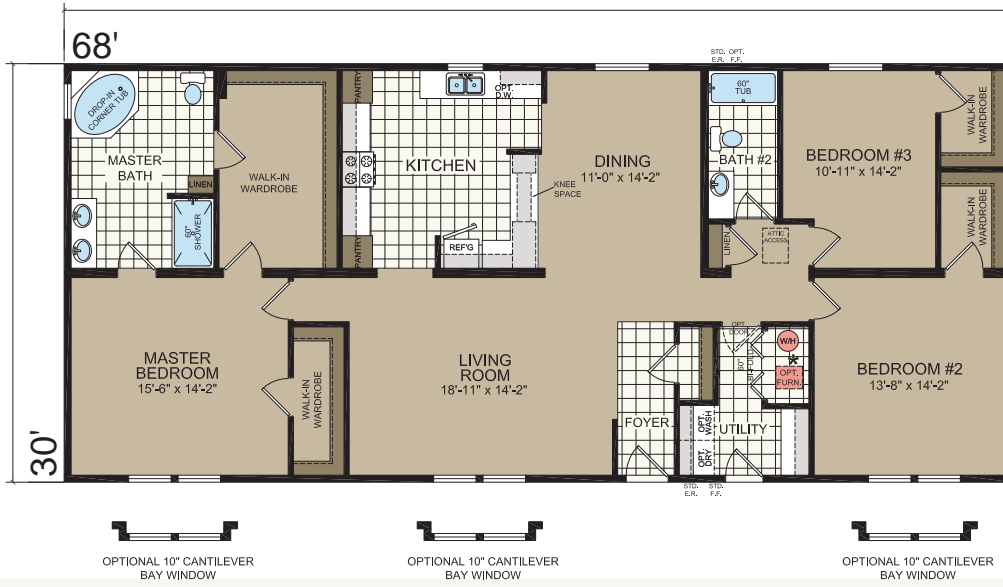


OPTIONAL BASEMENT

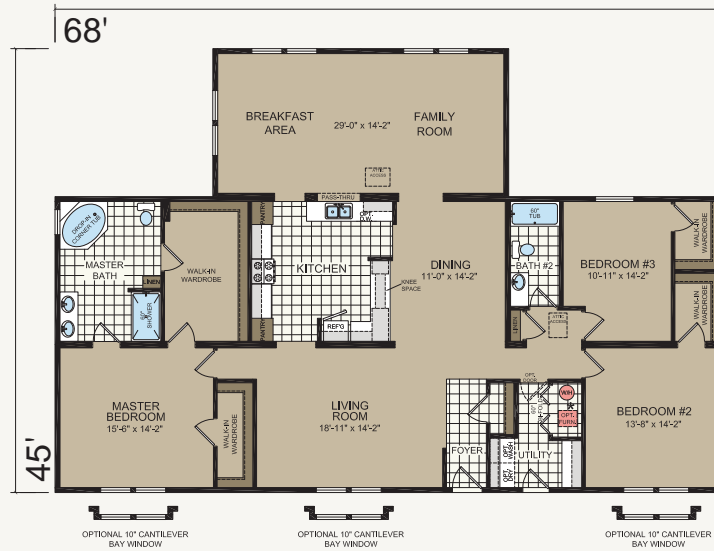
\* (WARM AIR DUCTS SHIPPED LOOSE WITH BASEMENT OPTION)



RM1031  
 30' x 68'  
 3 bed-2 bath  
 2040 sq.ft.



RM1031-2  
 45' x 68'  
 3 bed-2 bath  
 2490 sq.ft.



RM1031-3  
 58'4" x 68'  
 3 bed-2 bath  
 2668 sq.ft.



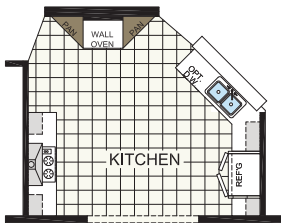


# The Woodridge

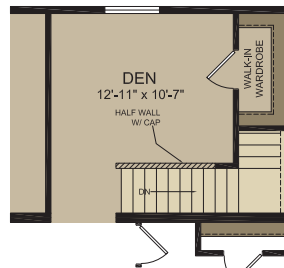
RM1003-4  
 60' x 64'  
 3 bed-2 bath  
 2560 sq.ft.



Shown with Site-Built Garage by Others

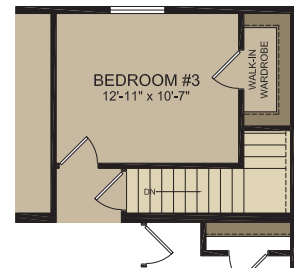


OPTIONAL ULTIMATE KITCHEN



BEDROOM #2

OPTIONAL BASEMENT W/ DEN

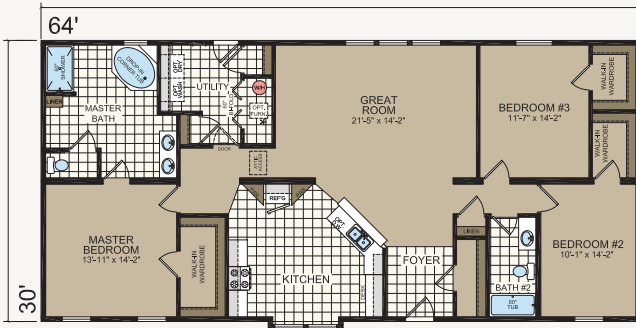


BEDROOM #2

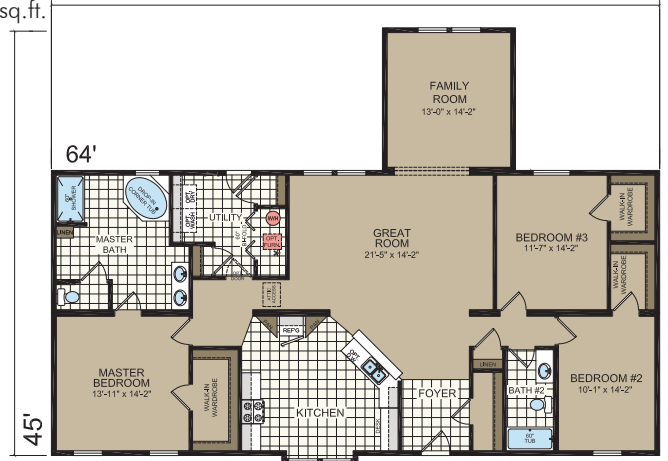
OPTIONAL BASEMENT W/ BEDROOM #3



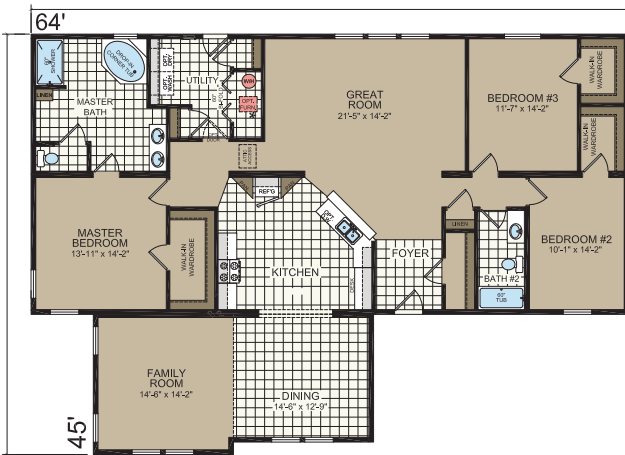
RM1003  
 30' x 64'  
 3 bed-2 bath  
 2130 sq.ft.



RM1003-1  
 45' x 64'  
 3 bed-2 bath  
 2130 sq.ft.



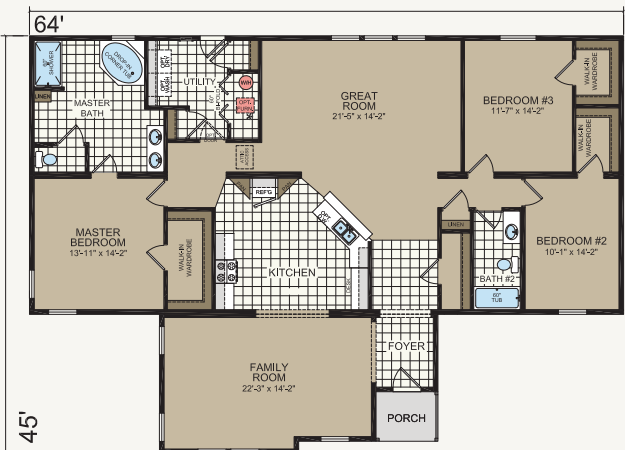
RM1003-2  
 45' x 64'  
 3 bed-2 bath  
 2350 sq.ft.



RM1003-3  
 45' x 64'  
 3 bed-2 bath  
 2314 sq.ft.



RM1003-5  
 45' x 64'  
 3 bed-2 bath  
 2524 sq.ft.



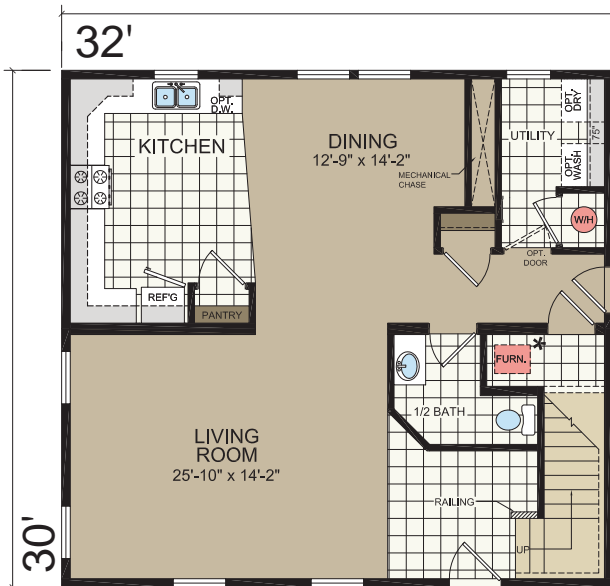


# The Bristow

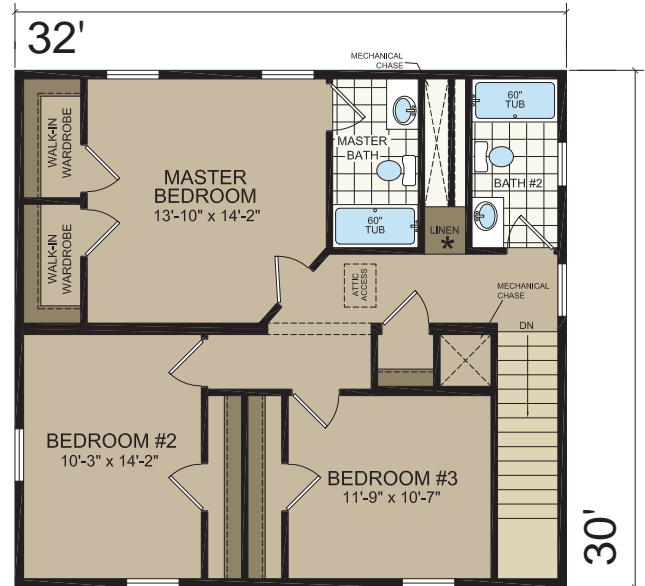
RM2007  
 30' x 32'  
 3 bed-2.5 bath  
 1920 sq. ft.



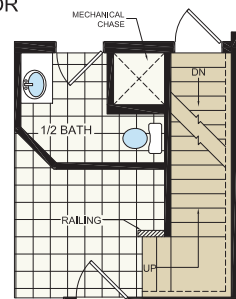
Shown with Optional Elevation and Site-Built Garage by Others



1ST FLOOR



2nd FLOOR



OPTIONAL BASEMENT









# 2017 GENESIS II SERIES MODULAR

## STANDARD FEATURES

### FRAMES & FLOORS

- Open-Web Joist Floor 19.2" O.C.
- 19/32" 4 x 8 OSB Floor Decking
- Double 2 x 10 Rim Joist /
- LVL Marriage Line Rim Joist
- Perimeter Registers w/ 6" Round Boots
- 16 oz. Plush Carpet
- 5 Lb Rebond Carpet Pad
- Linoleum in Wet Areas & Foyer

### EXTERIOR

- 2 x 6 Wall Studs / 16" O.C.
- R-19 Insulation
- 7/16" OSB Sheathing
- House Wrap
- Double Dutch Lap 4" Vinyl Siding
- 15" Raised Panel Shutters-Doorside

### EXTERIOR DOORS & WINDOWS

- Vinyl Single Hung, Low "E" w/ Grids
- 36 x 80 White 6 Panel w/ Storm-Front Door
- White 6-Panel Fire Rated-Rear Door
- Nickel Lockset with Deadbolt

### CEILING & ROOF

- 8' Flat Ceilings w/ Stomped Textured Finish
- 5/12 Roof Pitch STD on 26' & 28' Wides
- 7/12 Roof Pitch STD 30' Wide
- R-40 Cellulose Insulation
- 7/16" OSB Roof Sheathing
- 30 Yr. Fiberglass Dimensional Shingles
- 12" Vented End walls Eaves
- 12" Eaves-Sidewall 30' Wide
- Steel Fascia Trim
- Fully Vented Vinyl Soffit
- Roof Load Meets or Exceeds State Requirements

### INTERIOR WALLS & DOORS

- 2 x 4 24" O.C.
- 2 x 6 Plumbing Walls
- 1/2" Drywall T/O
- Wood Tone 6 Panel Int Doors to Match Cabs  
Except for Creston Oak Cabinets which are only available with White 6 Panel Int Dr
- Nickel Round Knobs / 3 Mortised Hinges
- Metal Bi-Fold-VBP @ Furnace, Water Heater
- Hardwood Door and Window Casing
- Hardwood Base Moulding
- Wrapped MDF Jamb-Door / Window
- Hardwood Door Stop
- 2 x 4 16" O.C. Marriage Wall
- Finished Ceiling Joints T/O
- 3 Mortised Hinges on All Interior Doors

### HEATING & PLUMBING

- 40 Gallon Electric Water Heater
- Main Water Shut-Off @ Water Heater
- Water Shut-Offs @ All Fixtures
- PEX Water Lines
- Schedule 40 PVC Drain / Vent Lines
- (1) Frost Free Exterior Faucet with Shut-Off Per Print
- Plumb for Washer-Per Plan
- Cold Air Returns-\*\*House without furnace

### ELECTRICAL

- 200 AMP Service w/ 30/40 Box
- 12/2 Copper Wire Thru Out
- Wire for Dryer
- Smoke Detectors-All Bedrooms & LR
- GFI Recept- Kitchen, Baths, (2) Exterior
- Black Lantern Light-All Exterior Doors
- Can Lights Over Cabinets & Island in Kitchen
- 1 Phone Jack-Standard

### CABINETRY

- Hardwood Flat Panel Cabinets
- 1/2" Cabinet End Panels
- Hidden Hinges
- Countertops-Hi Pressure Laminate w/ Self Edge
- Laminate Backsplash
- 3/4" Hardwood Stiles
- Grooved End Panels
- 3/4" Adjustable Shelving
- 1-3/4" Cabinet Cove
- Pantry w/ Lazy Susan & Roll-Out Shelf-VBP-(Kit)
- Kitchen Island-VBP
- 1/2" Adjustable Center Shelf
- Nickel Handles
- Bottom Cabinet Trim
- 30" & 42" with Cubbies Overhead Cabinets
- Fluted Trim w/Top & Bottom Rosettes @ Cabinet Sink
- Full Length Corner Cabs with Glass Doors

### KITCHEN & BATH

- 30" Deluxe Electric Range
- 18 CF Over/Under Refrigerator
- 30" Range Hood w/Charcoal Filter
- Stainless Steel Sink
- Ceramic Tile Between Range/Range Hood
- Staggered Cabinets
- Bottom Lip Molding
- Fiberglass Oval Drop-In (VBP)
- 48" or 60" 1-Piece Fiberglass Shower-VBP
- Pivot Shower Door-VBP
- Elongated China Commode
- China Lavs
- Lighted Bath Vents  
Eave Vent w/ Side Discharge
- Ceramic Tub/Shower Trim

### ADDITIONAL

- Full Length Drape & Rod in LR, DR, FR
- Valances-Kitchen / MBR / MBATH
- 2" Vinyl Mini Blinds T/O
- Wooden Valance Board above Kitchen Window
- DR Chandelier w/Globe
- Platinum Light Package
- Wire Closet Shelving

**ORB=Oil Rubbed Bronze**

**VBP=Varies by Print**

Due to continuous product development and improvement all prices, specifications and material are subject to change without notice or obligation. Square footage and other dimensions are approximate. Included images are artist renderings and are not intended to be an accurate representation of the homes. Renderings and Floor Plans may be shown with optional features and / or third party additions that may not be available in all regions or situations. Exterior Renderings may include onsite builder built options not offered by Champion Home Builders, Inc.



REDMAN  HOMES®

Topeka, IN

[www.geneshomes.com](http://www.geneshomes.com)

