



NEW MOON MODULAR SERIES

REDMAN  HOMES.®



ABOUT US

Redman Homes is one of the oldest and most respected homebuilders in America. Founded in 1937, Redman pioneered factory-built home construction and continues to lead advances in quality control, design and home value today. Through experience and innovation we've harnessed production line efficiency and, paired with our high-quality craftsmanship, created a process that delivers homes that meet our superior standards.

A place to call your own

Beyond just building you a house, we're committed to providing you and your family with a home to make memories in that will last a lifetime. Somewhere you can feel secure. A place you can call your own. A home that fits your lifestyle and has your own personal touch. Whether you're an active young family constantly on the go or empty nesters ready to simplify, just relax – we have a home that's right for you.

More choice, more freedom

Our vast selection of floor plans, color choices and options give you the design choices you want to create a home you'll truly enjoy. Using our online Kitchen Designer, it's easy to create the kitchen of your dreams.

Building the best

We build each and every home to meet or exceed a strict national or state building code, and we set even higher standards for ourselves. Focusing on the things you don't see as well as the things you do, we monitor and inspect our homes at every stage of construction. From the plumbing system to the electrical wiring, from the kitchen cabinets to the closets in the bedrooms – every home we build undergoes rigorous quality inspections to ensure we're providing you with nothing but our best.

The quality you expect

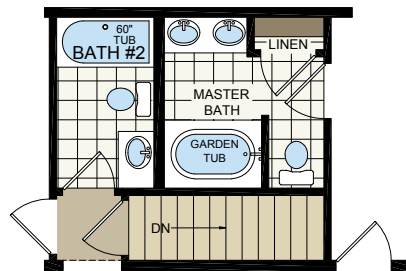
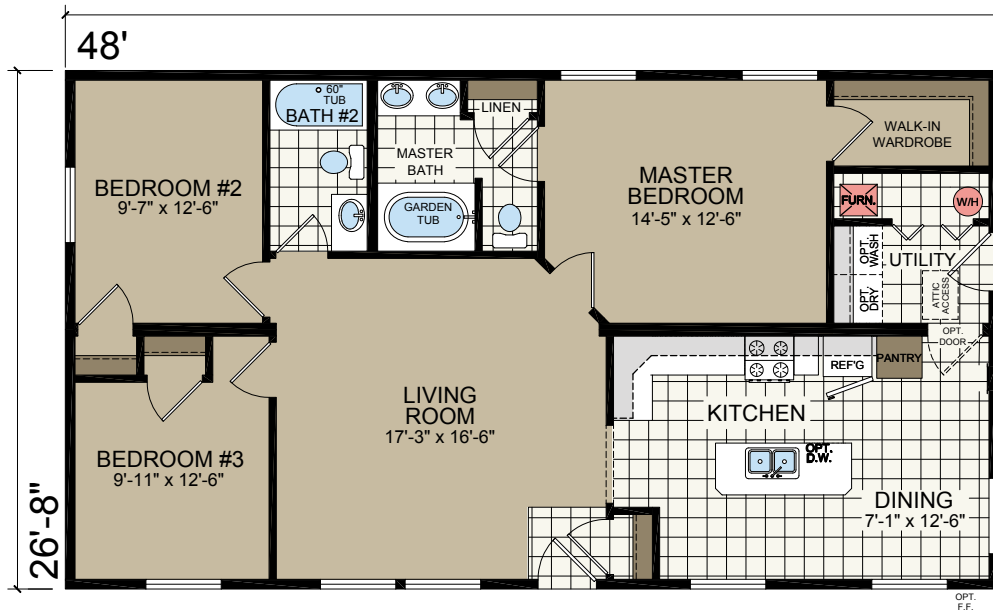
To build the best, we use the best. To meet your expectations of quality - and ours - we use only the highest-quality building materials and trusted national brand names. From insulation and fixtures to flooring and appliances, we only buy components from suppliers who share our commitment to quality. By using the best, we're confident we can build you a home with the lasting value you'll appreciate for years to come. Your housing consultant can tell you more about the specific brands used in our homes.

SUNSET

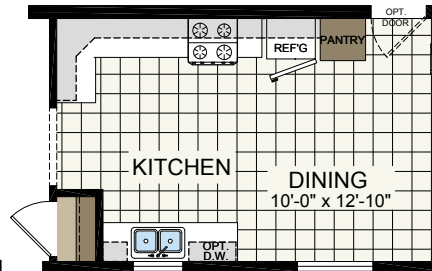
NM 4811
 28'x48'
 3 Bed, 2 Bath
 1280 sq. ft



Shown with Optional Elevation



OPTIONAL BASEMENT



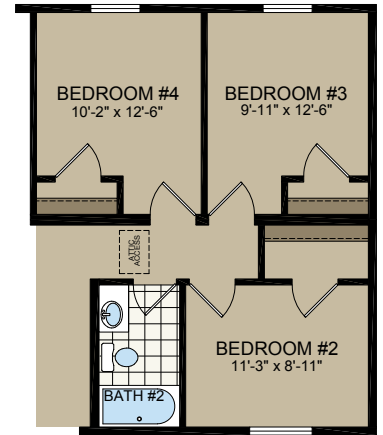
OPTIONAL KITCHEN

VIRGINIA

NM 5633
 28' x 56'
 3 Bed, 2 Bath
 1493 sq. ft



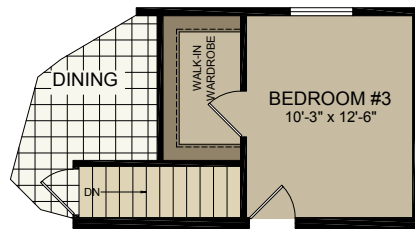
Shown with Site-built Porch and Garage by Others



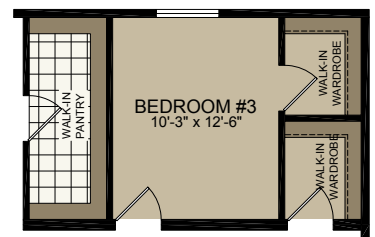
OPTIONAL 4th BEDROOM



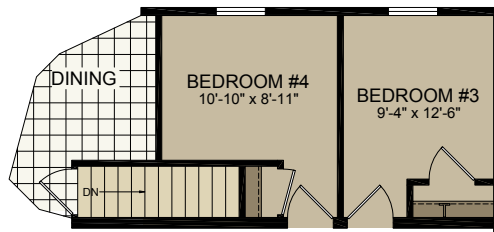
OPTIONAL WALK-IN PANTRY w/ BASEMENT



OPTIONAL BASEMENT



OPTIONAL WALK-IN PANTRY



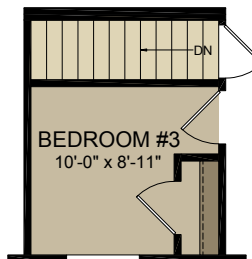
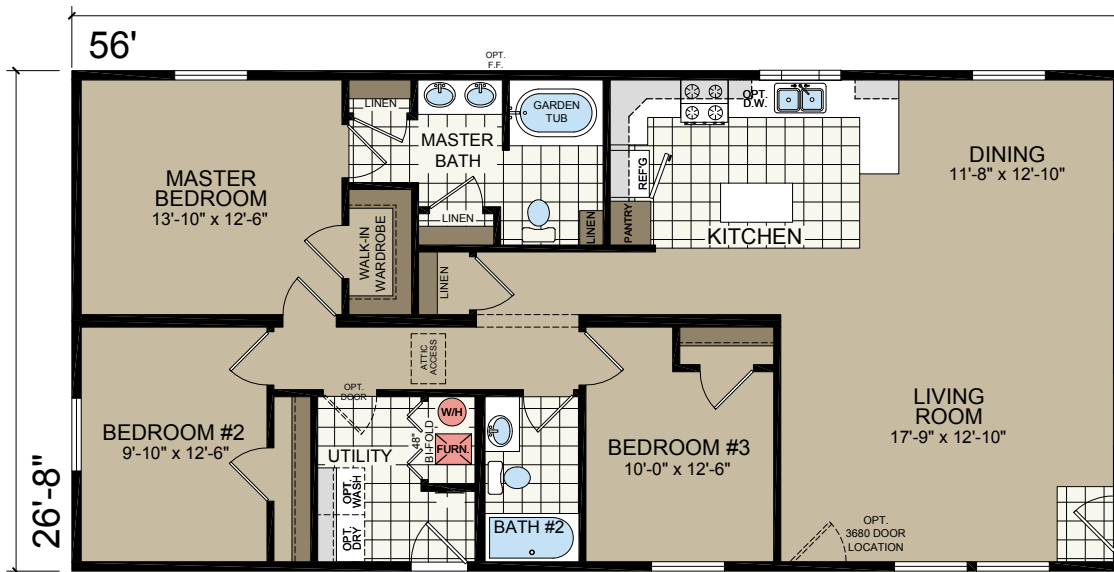
OPTIONAL 4th BEDROOM w/ BASEMENT

CRANBERRY

NM 5629
 28' x 56'
 3 Bed, 2 Bath
 1493 sq. ft



Shown with Site-built Garage by Others



OPTIONAL BASEMENT

NEWPORT

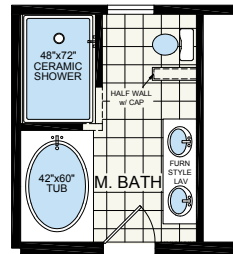
NM 5631
 28' x 56'
 3 Bed, 2 Bath
 1493 sq. ft



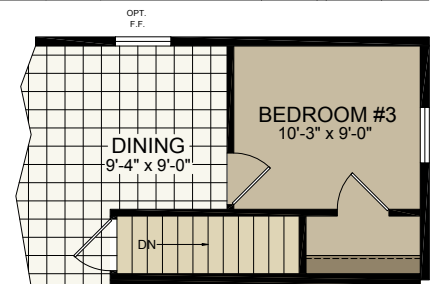
Shown with Optional Elevation and Site-built Porch by Others



MASTER BEDROOM OPTION



SERENITY BATH OPTION



STAIRWELL OPTION



NEWPORT



**TAKE A
VIDEO TOUR
OF THIS HOME**

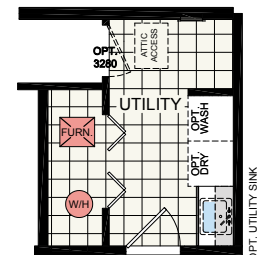
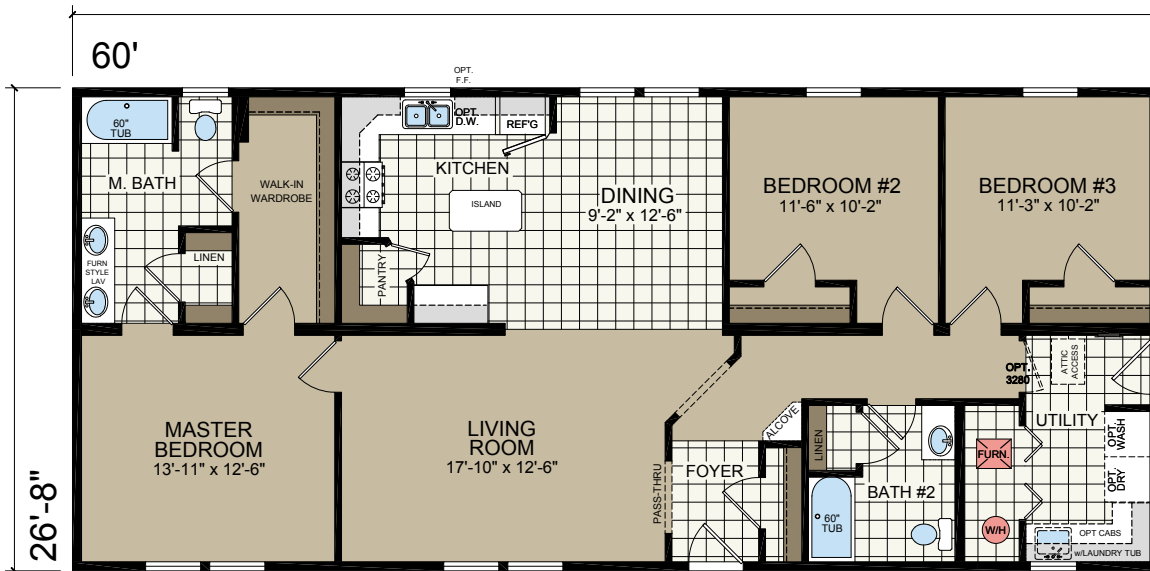


MYRTLE

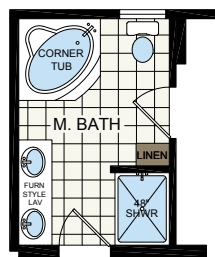
NM 6033
 28' x 60'
 3 Bed, 2 Bath
 1600 sq. ft



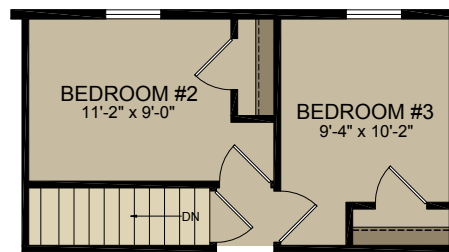
Shown with Site-built Porch and Garage by Others



OPT. DOOR LOCATION



OPT. MASTER BATH



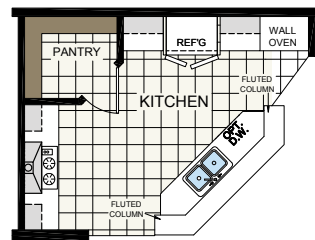
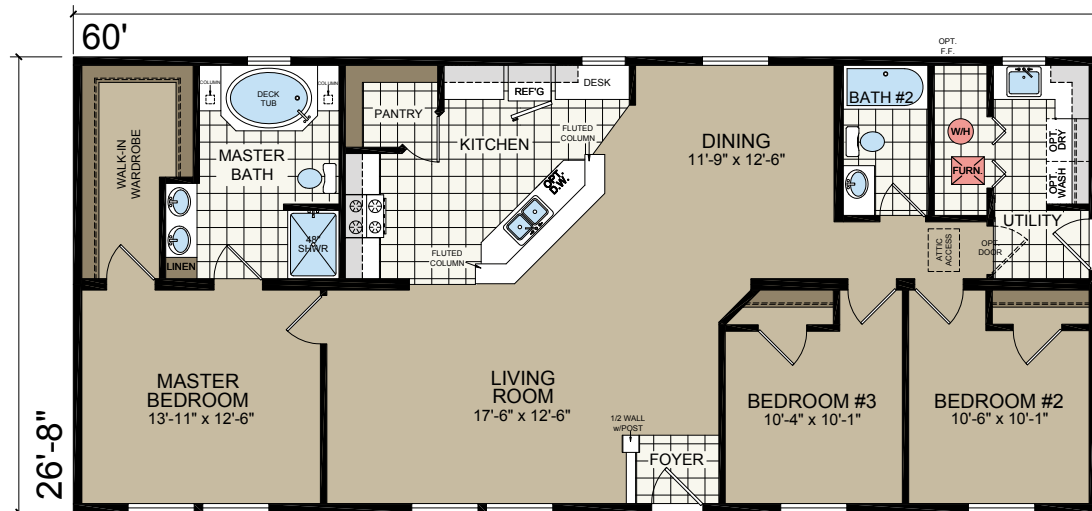
OPT. STAIRWELL

MALIBU

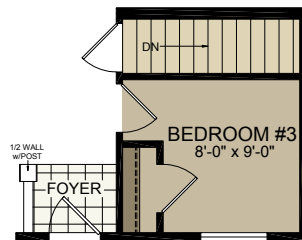
NM 6035
 28' x 60'
 3 Bed, 2 Bath
 1600 sq. ft



Shown with Site-built Porch and Garage by Others



OPTIONAL ULTIMATE KITCHEN



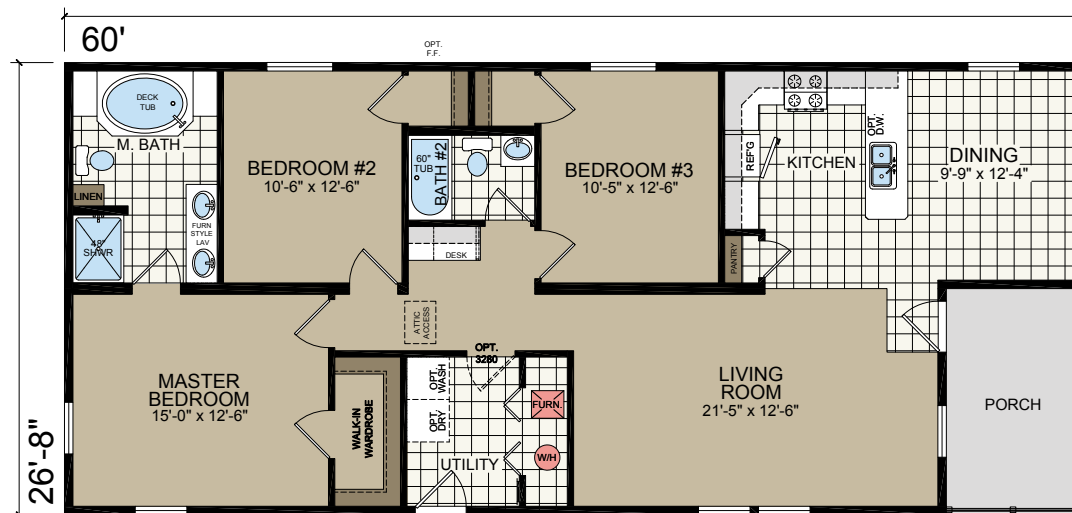
OPTIONAL BASEMENT

OCEANSIDE

NM 6031
28' x 60'
3 Bed, 2 Bath
1493 sq. ft



Shown with Site-built Garage by Others

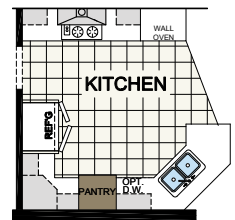
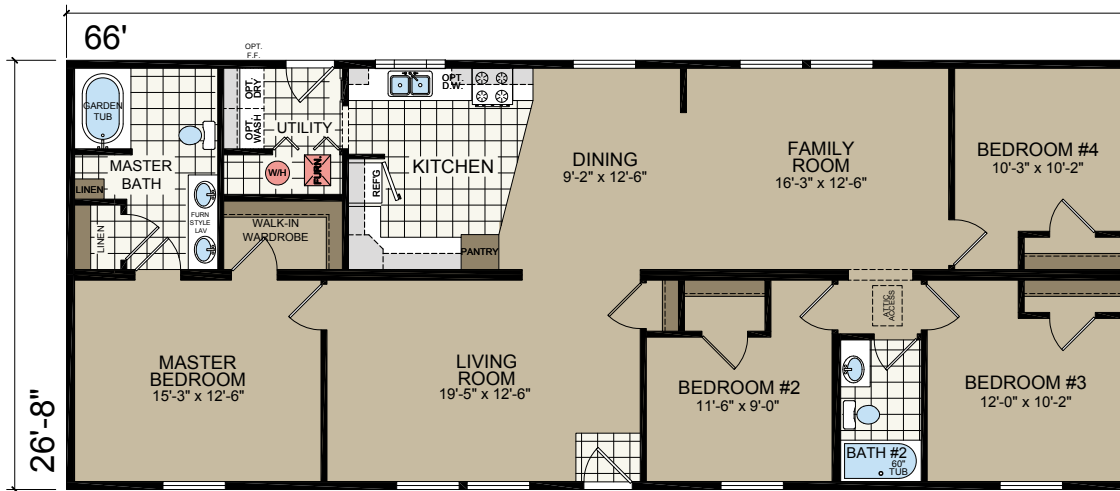


PACIFIC

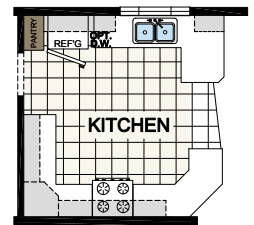
NM 6603
 28' x 66'
 3 Bed, 2 Bath
 1760 sq. ft



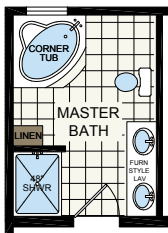
Shown with Site-built Porch by Others



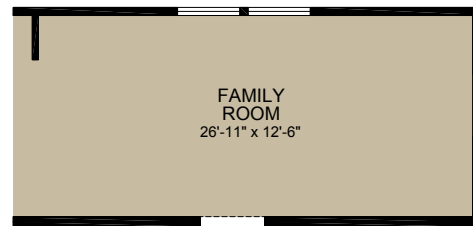
OPTIONAL ULTIMATE KITCHEN



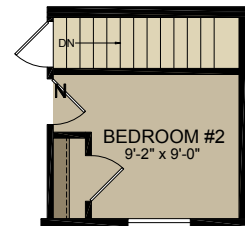
OPTIONAL KITCHEN



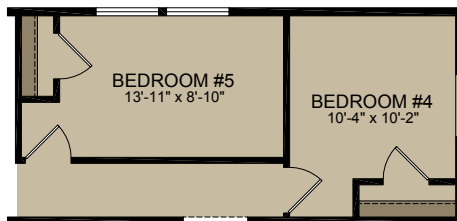
OPTIONAL MASTER BATH



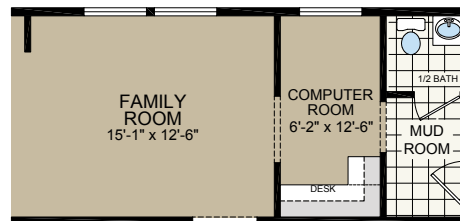
OPTIONAL FAMILY ROOM



OPTIONAL BASEMENT



OPTIONAL 5th BEDROOM



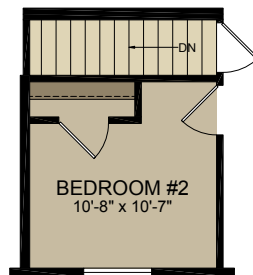
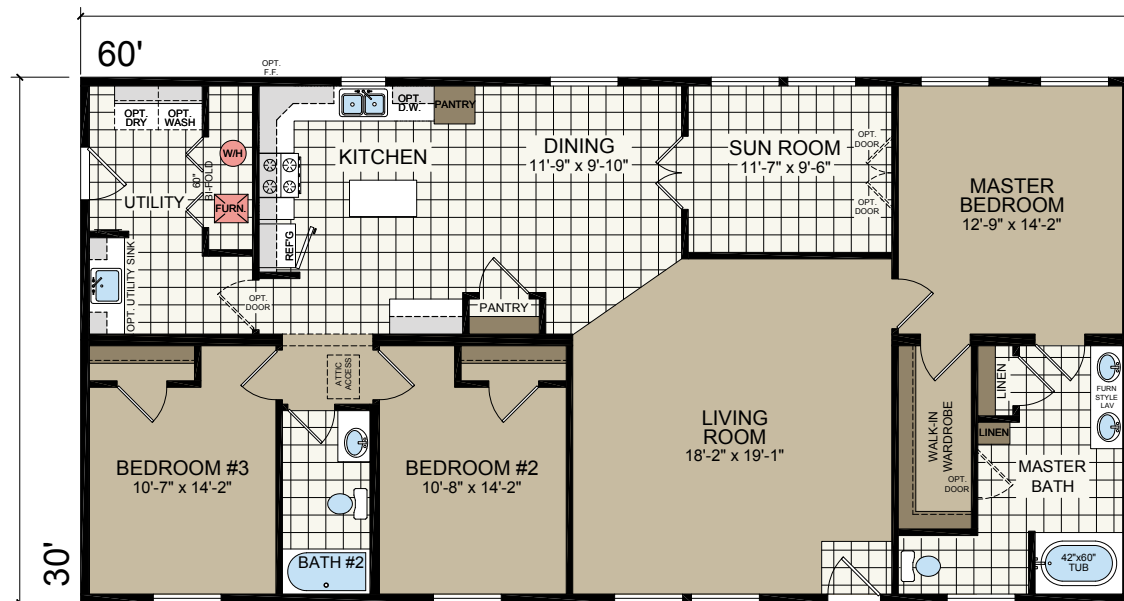
OPTIONAL MUD ROOM & COMPUTER ROOM

SOUTH BEACH

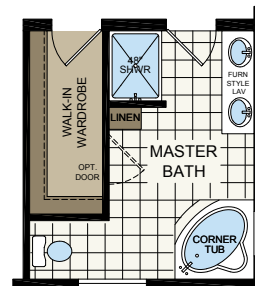
NM 6009
 30' x 60'
 3 Bed, 2 Bath
 1800 sq. ft



Shown with Optional Elevation and Stone-work done Onsite by Others



OPTIONAL BASEMENT



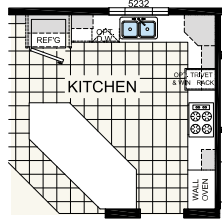
OPTIONAL MASTER BATH

SAVANNAH

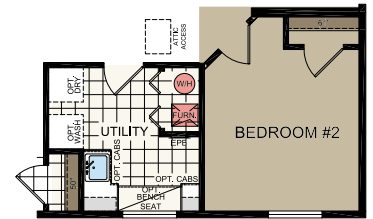
NM 6039
 30' x 60'
 3 Bed, 2 Bath
 1800 sq. ft



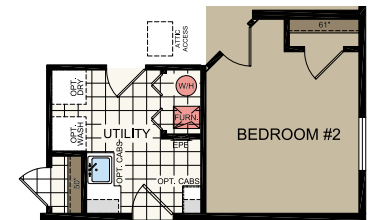
Shown with Optional Elevation



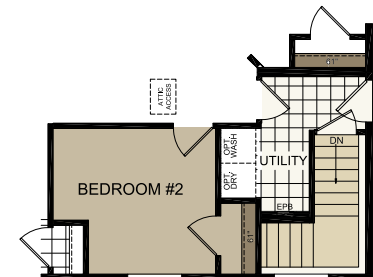
OPTION ULTIMATE KITCHEN
 60'



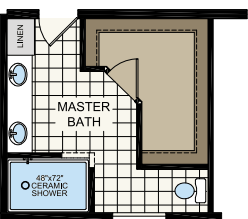
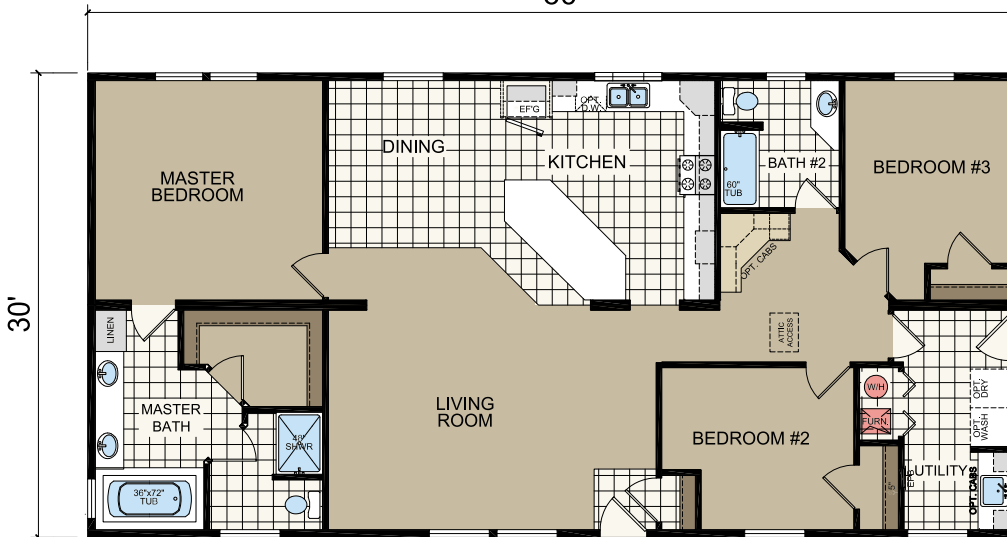
OPTION UTILITY ROOM



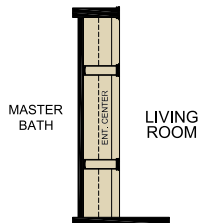
OPTION UTILITY ROOM & FRONT GARAGE ENTRY



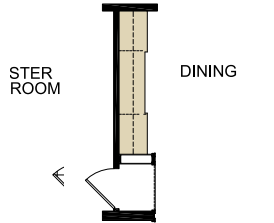
STAIRWELL OPTION FURNACE, W/H IN BASEMENT



OPTION SERENITY SHOWER



OPTION VANISHING MATE LINE (LIVING ROOM)



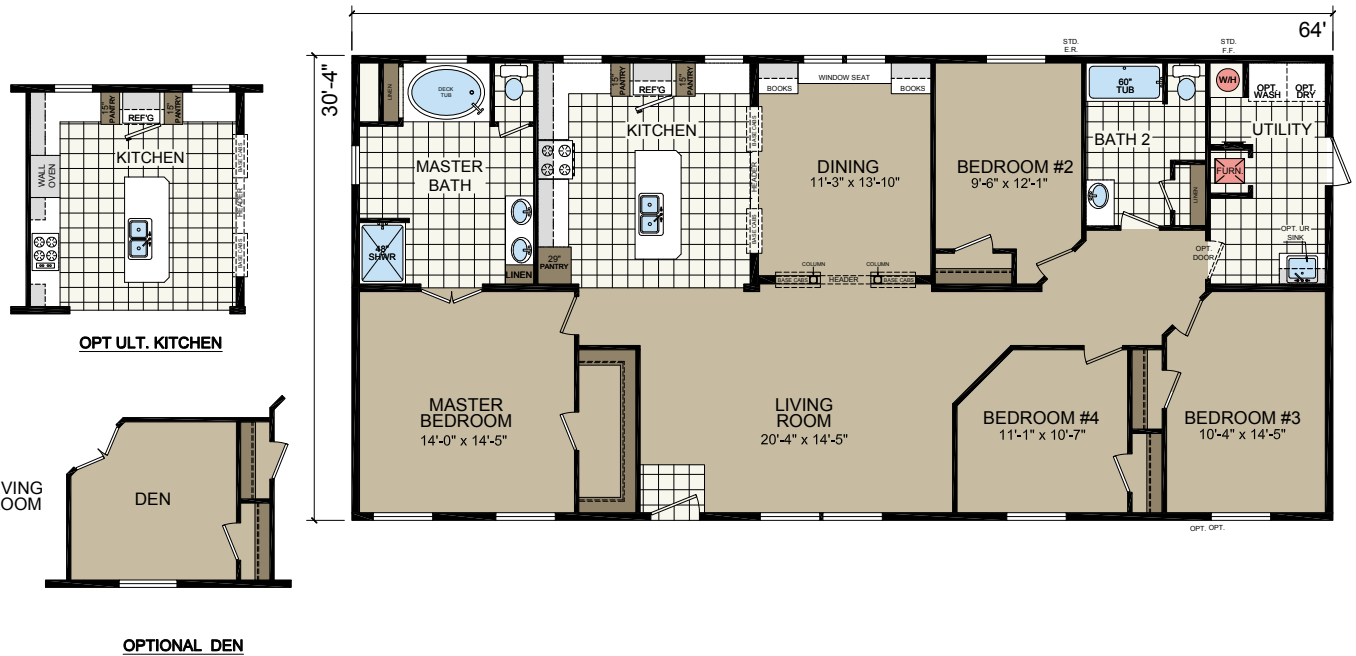
OPTION VANISHING MATE LINE (DINING ROOM/HUTCH)

INDIAN

NM 6401
30' x 64'
3 Bed, 2 Bath
1920 sq. ft



Shown with Optional Elevation, Site-built Porch and Garage by Others

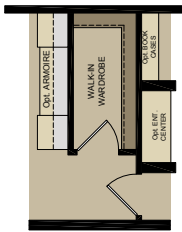


DAKOTA

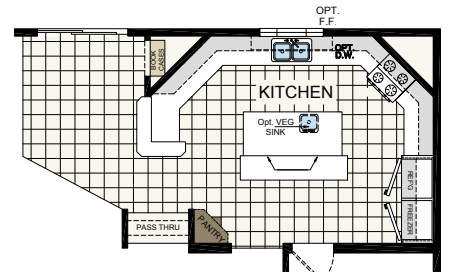
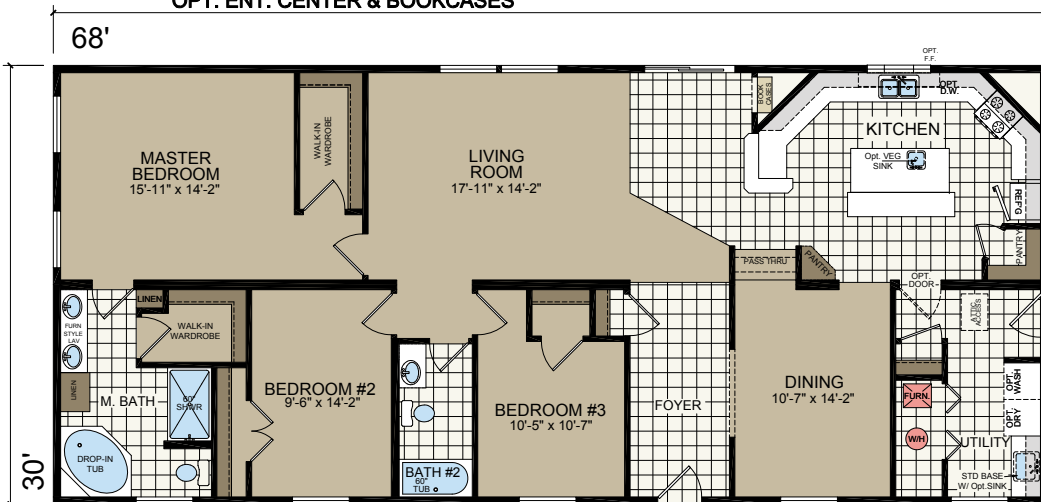
NM 6815
 30' x 68'
 3 Bed, 2 Bath
 2040 sq. ft



Shown with Site-built Porch by Others

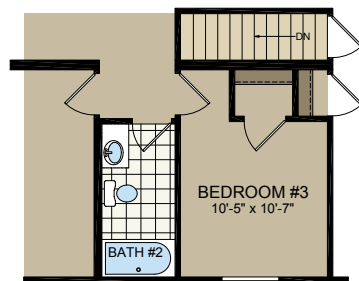


OPT. ARMOIRE and/or
 OPT. ENT. CENTER & BOOKCASES

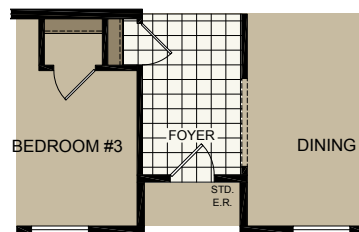


OPT. KITCHEN

**TAKE A
 VIDEO TOUR
 OF THIS HOME**



OPT. BASEMENT



OPT. RECESSED ENTRY



APOLLO

NM 7201
 32' x 72'
 4 bed-2 bath
 2160 sq.ft.



*Shown with Optional Elevation



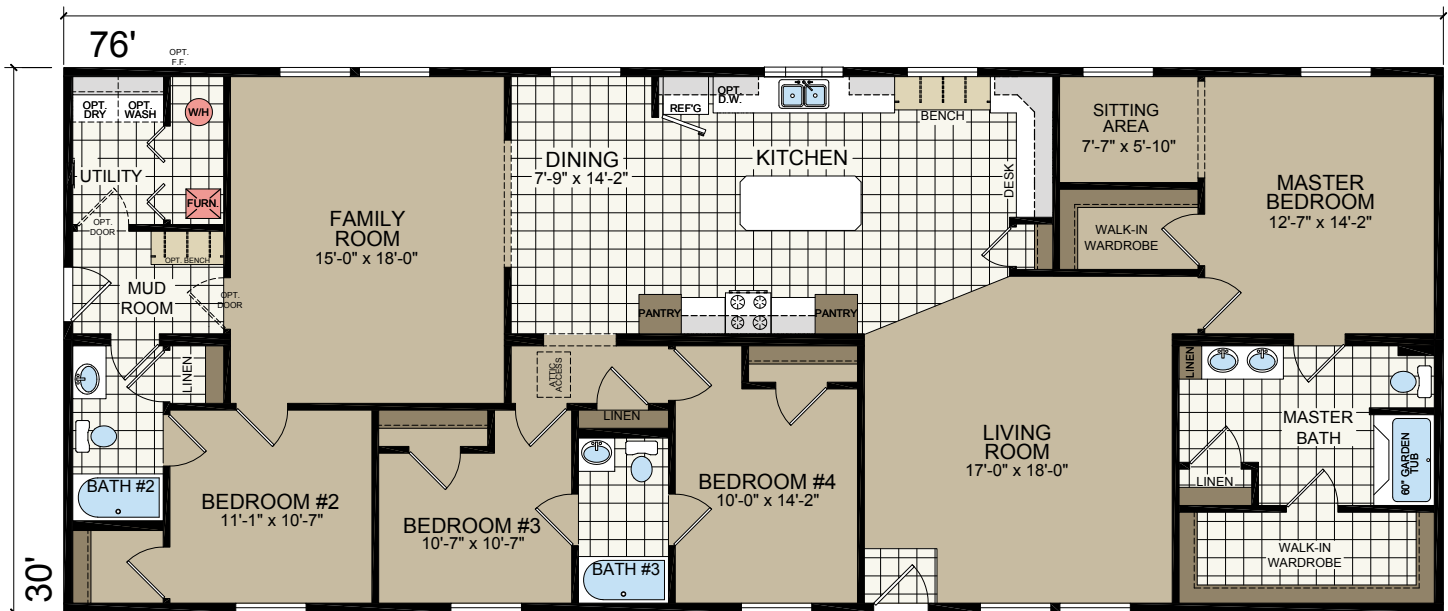


RED CEDAR

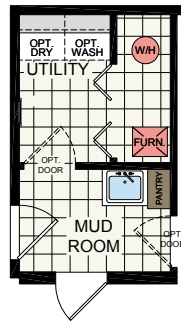
NM 7607
30' x 76'
4 bed-3 bath
2280 sq. ft.



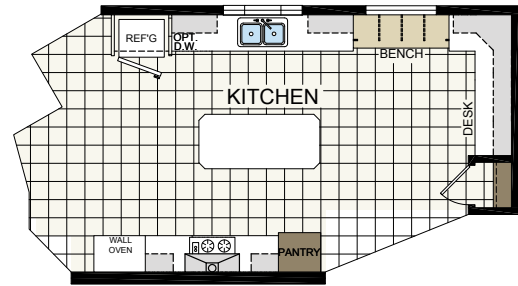
Shown with Site-built Porch by Others



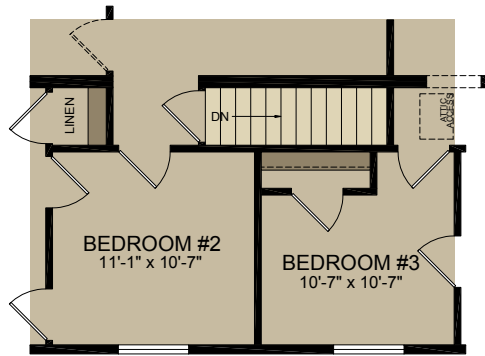
OPTIONS



OPTIONAL UTILITY SINK



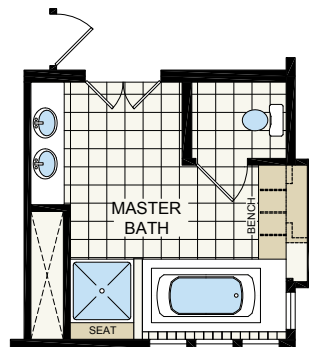
OPTIONAL ULTIMATE KITCHEN



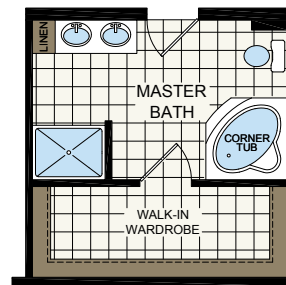
OPTIONAL BASEMENT



OPTIONAL WALK-IN WARDROBE



OPTIONAL SUITE RETREAT



OPTIONAL MASTER BATH

STANDARD FEATURES

FRAMES & FLOORS

- Open-Web Joist Floor 19.2" O.C.
- 5/8" 4'x8' OSB Floor Decking T&G
- Double 2 x 10 Rim Joist
- LVL Marriage Line Rim Joist
- Baseboard Registers w/ 6" Round Boots
- 16 Oz. Simply Stated Carpet
- 5 Lb. Rebond Carpet Pad
- Linoleum in Wet Areas & Foyer

EXTERIOR

- 2'x6' Wall Studs / 16" O.C.
- R-19 Insulation
- 7/16" OSB Sheathing
- House Wrap
- Dutchlap 4" Vinyl Siding
- 15" Raised Panel Shutters - Doorside

CEILING & ROOF

- 8' Flat Ceilings w/ Stomped Textured Finish
- 5/12 Roof Pitch w/ Rafter Spacing 24" O.C.
- 7/12 Roof Pitch STD 30' Wide
- R-40 Cellulose Insulation
- 7/16" OSB Roof Sheathing
- 30 Yr. Fiberglass Dimensional Shingles
- 12" Vented Endwalls Eaves
- 8" Eaves - Sidewall 28' Wide
- 12" Eaves - Sidewall 30' Wide
- White Alum Fascia
- Fully Vented Vinyl Soffit
- Roof Load Meets or Exceeds State Requirements

EXTERIOR/ DOORS / WINDOWS

- Vinyl Single Hung, Low "E" w/ Grids
- 36 x 80 White 6 Panel w/ Storm - Front Door
- 36 x 80 White Steel 6-Panel Fire Rated - Rear Door
- Brush Nickel Lockset / Deadbolt

*ORB=Oil Rubbed Bronze

VBP=Varies by Print

NOTE: Patio Doors and Atrium

Doors will no longer contain Grids.

INTERIOR WALLS & DOORS

- 2'x4' 24" O.C.
- 2'x6' Plumbing Walls
- 1/2" Drywall T/O
- Wood Tone 6 Panel Int. Doors - to match Cabs.
- ORB Round Knobs / 3 Mortised Hinges
- Metal Bi-Fold - VBP @ Furnace, Water Heater
- 2 1/4" Hometown Ash Door & Window Casing
- 2 1/4" Hometown Ash Base Moulding
- Hometown Ash Door and Window Jamb
- Finished Ceiling Joint in Living Area
- Flat Door Stop
- 2'x4' 16" O.C. Marriage Wall

HEATING & PLUMBING

- 40 Gallon Electric Water Heater
- Water Shut-Offs @ All Fixtures
- PEX Water Lines
- Schedule 40 PVC Drain / Vent Lines
- (1) Frost Free Exterior Faucet w/ Shut-Off Per Print
- Plumb for Washer - Per Plan
- Electric Furnace

ELECTRICAL

- 200 AMP Service w/ 30-40 Box
- 12-2 Copper T/O
- Wire for Dryer
- Smoke Detectors - All Bedrooms & LR
- GFI Recepts - Kitchen, Baths, (2) Exterior
- Black Lantern at All Exterior Doors
- 3 Arm ORB Light Fixture @ Baths
- 1 Phone Jack is Standard
- ORB Chandelier
- ORB Light Fixtures

ADDITIONAL

- Full Length Drapes LVR, FR, DR
- Decorative Rod in LVR, FR, DR
- Valances - Kitchen / MBR / Mbath

CABINETRY

- Hardwood Hometown Ash Flat Cabinet Doors
- 1/2" Cabinet End Panels
- Hidden Hinges
- Countertops-Hi Pressure
- Laminate w/ Self Edge
- 4" Laminate Backsplash w/Matching Caulk
- 30" & 42" Overhead Cabinets w/ Cubbies -VBP
- Hardwood Stiles
- Cabinet Cove Trim
- Fluted Trim w / Top and Bottom Rosettes at Sink
- Drawers Over Doors - Kitchen
- Bank of Drawers - Kitchen
- Cabinet Drawers: Dove Tail Construction w/Soft Close
- Single Adjustable Center Shelf @ O/H
- 1/2" Adjustable Center Shelf
- ORB Cabinet Handles
- Full Length Corner Cabs w/Glass, Fluted Trim, & Rosettes - VBP
- Valance Board at Kitchen Window
- Bottom Cabinet Trim
- Extendable Drawer Guides

KITCHEN & BATH

- 30" Deluxe Electric Range
- 18 CF Over/Under Refer
- Range hood
- Stainless Steel Sink w/ ORB Pullout Sprayer
- Can Lights in Kitchen - VBP
- Ceramic Tile Between Range/Range Hood
- Staggered Cabinets
- 60" 1-Piece Fiberglass Oval Drop-In (VBP)
- 48" or 60" 1-Piece Fiberglass Shower or Tub/Shower - VBP
- 60" 1-Piece Fiberglass Tub - Bath 2
- Pivot Shower Door (60" or 48" Shower) (VBP)
- ORB Metal Faucets
- Elongated China Commode
- White China Lavs
- Lighted Bath Vents - Eave Vent/ Side Discharge
- White Ceramic Tub/Shower Trim
- Trimmed Mirrors

Due to continuous product development and improvement, prices, specifications, and materials are subject to change without notice or obligation. Square footage and other dimensions are approximate. Exterior images may be artist renderings and are not intended to be an accurate representation of the home. Renderings, photos and floor plans may be shown with optional features or third-party additions.

MAKE YOURSELF AT HOME WITH REDMAN HOMES

Redman tradition, Redman value

It's finding a home you can feel proud to call your own. It's design choices that perfectly match your need for space and comfort and frees you to express them in your own way. It's award-winning design and craftsmanship with impeccable attention to detail. It's a commitment to providing you with the style and features you'll enjoy for years to come. It's combining everything you would want in a home with surprising affordability.

And it's all yours from Redman Homes.







308 Sheridan Drive | Topeka, IN 46571
T 800-777-6637 | F 260-593-2401
www.redmanhomesofindiana.com

CHAMPION®

MANUFACTURED BEAUTIFULLY™