



# ADVANTAGE MODULAR SERIES

REDMAN  HOMES®





Over the years, we've built more than just homes. We've built homebuyer trust in our ability to satisfy their needs and we're confident we can provide you with a home that will meet your needs and exceed your expectations.



# ABOUT US

**Redman Homes is one of the oldest and most respected homebuilders in America. Founded in 1937, Redman pioneered factory home construction and continues to lead advances in quality control, design and home value today. Through experience and innovation we've harnessed production line efficiency and, paired with our high-quality craftsmanship, created a process that delivers homes that meet our superior standards.**

## **A place to call your own**

Beyond just building you a house, we're committed to providing you and your family with a home to make memories in that will last a lifetime. Somewhere you can feel secure. A place you can call your own. A home that fits your lifestyle and has your own personal touch. Whether you're an active young family constantly on the go or empty nesters ready to simplify, just relax – we have a home that's right for you.

## **Building the best**

We build each and every home to meet or exceed a strict national or state building code, and we set even higher standards for ourselves. Focusing on the things you don't see as well as the things you do, we monitor and inspect our homes at every stage of construction. From the plumbing system to the electrical wiring, from the kitchen cabinets to the closets in the bedrooms – every home we build undergoes rigorous quality inspections to ensure we're providing you with nothing but our best.

## **More choice, more freedom**

Our vast selection of floor plans, color choices and options give you the freedom to express your personal style and fit your home around your life. Using our online Kitchen Designer, it's easy to create the kitchen of your dreams.

## **The quality you expect**

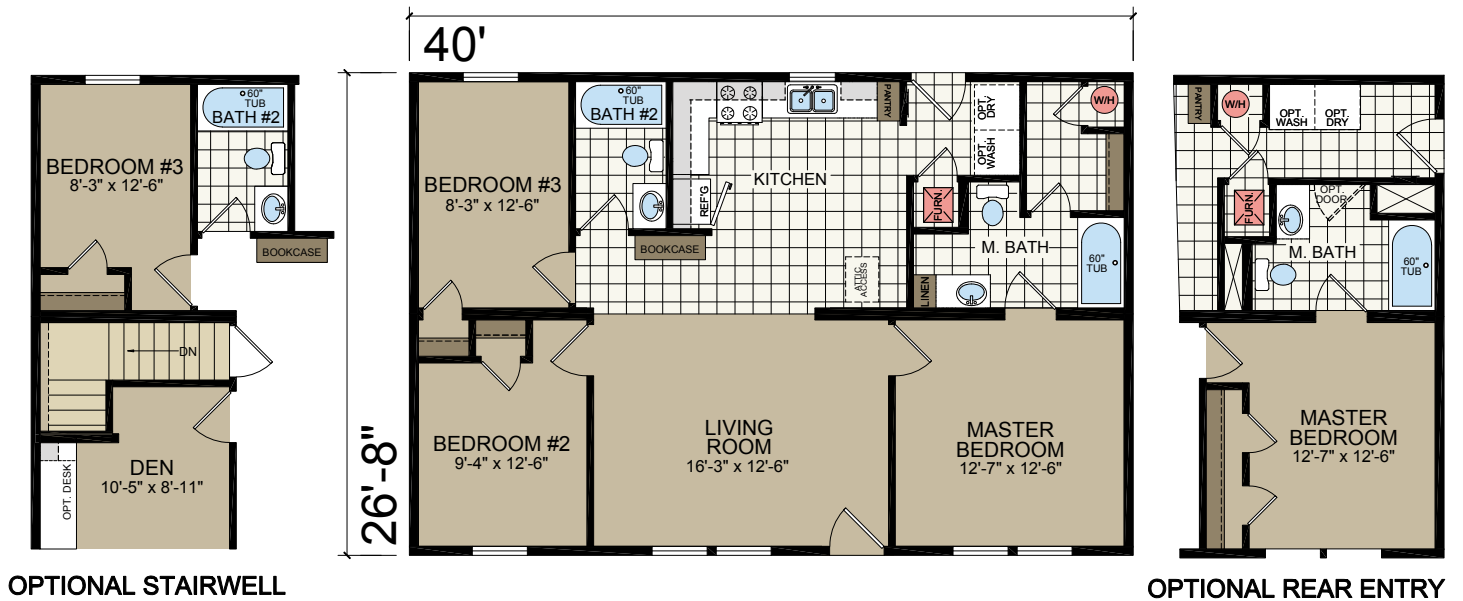
To build the best, we use the best. To meet your expectations of quality - and ours - we use only the highest-quality building materials and trusted national brand names. From insulation and fixtures to flooring and appliances, we only buy components from suppliers who share our commitment to quality. By using the best, we're confident we can build you a home with the lasting value you'll appreciate for years to come. Your housing consultant can tell you more about the specific brands used in our homes.

# 2844-201

28' x 40'  
3 bed-2 bath  
1067 sq. ft.



Shown with Site-built Porch



\* Designates field work

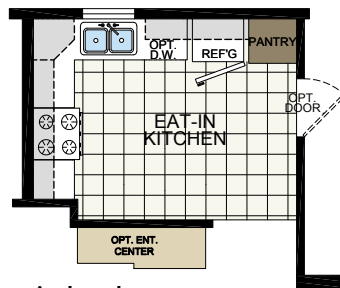
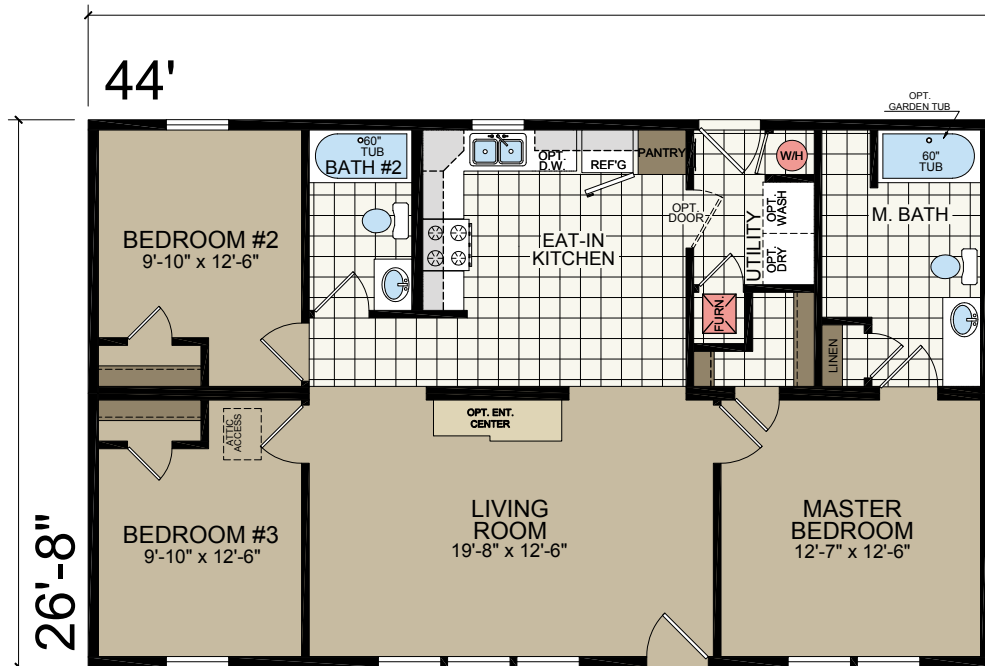
\*\* Insulated heat ducts are shipped loose and installed on-site by others

# 2848-201

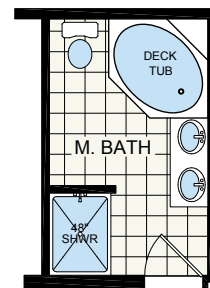
28' x 44'  
3 bed-2 bath  
1173 sq. ft.



Shown with Site-built Porch



KITCHEN OPTION



MASTER BATH OPTION

\* Designates field work

\*\* Insulated heat ducts are shipped loose and installed on-site by others

# 2852-207

28' x 48'  
3 bed-2 bath  
1280 sq. ft.



Shown with Site-built Porch



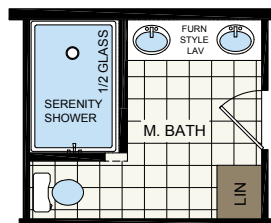
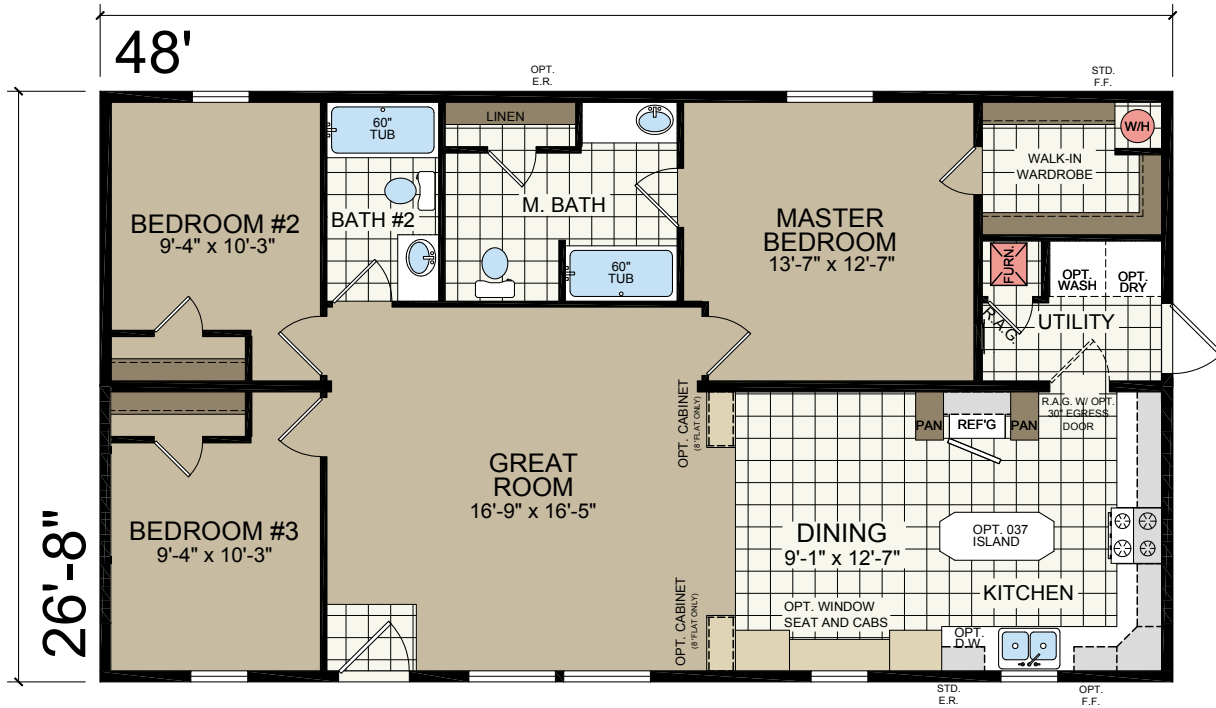


# 2852-215

28' x 48'  
3 bed-2 bath  
1280 sq. ft.



Shown with Site-built Porch



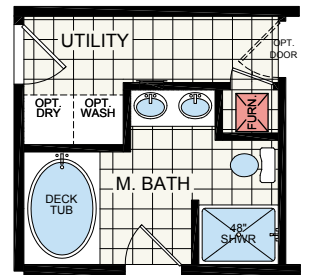
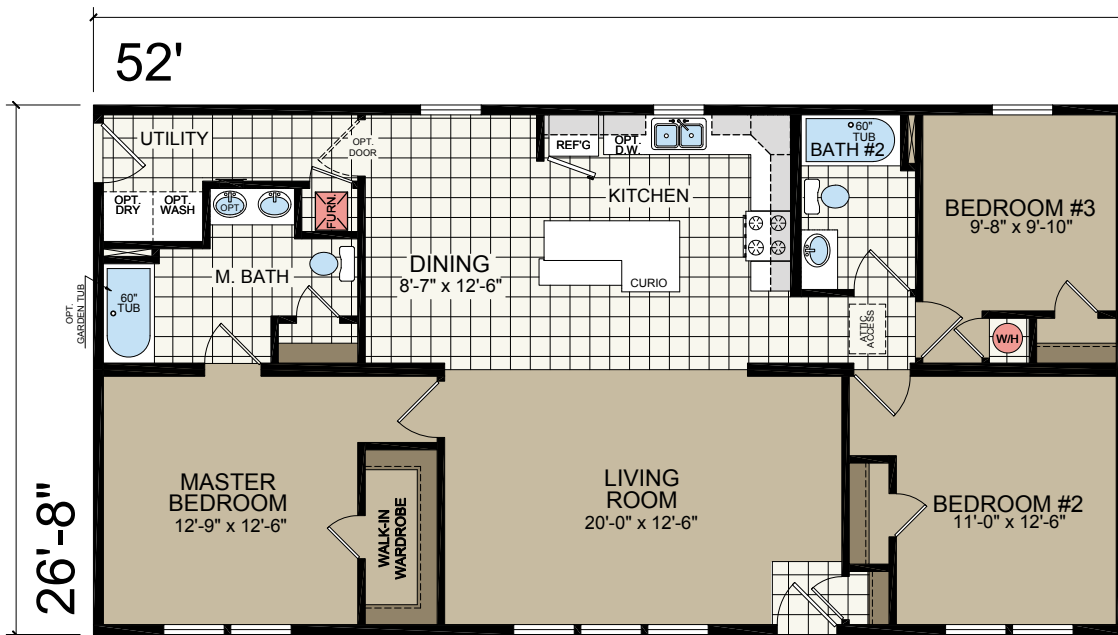
OPT. SERENITY SHOWER

\* Designates field work

\*\* Insulated heat ducts are shipped loose and installed on-site by others

# 2856-201

28' x 52'  
3 bed-2 bath  
1387 sq. ft.



MASTER BATH OPTION

\* Designates field work

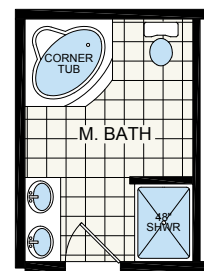
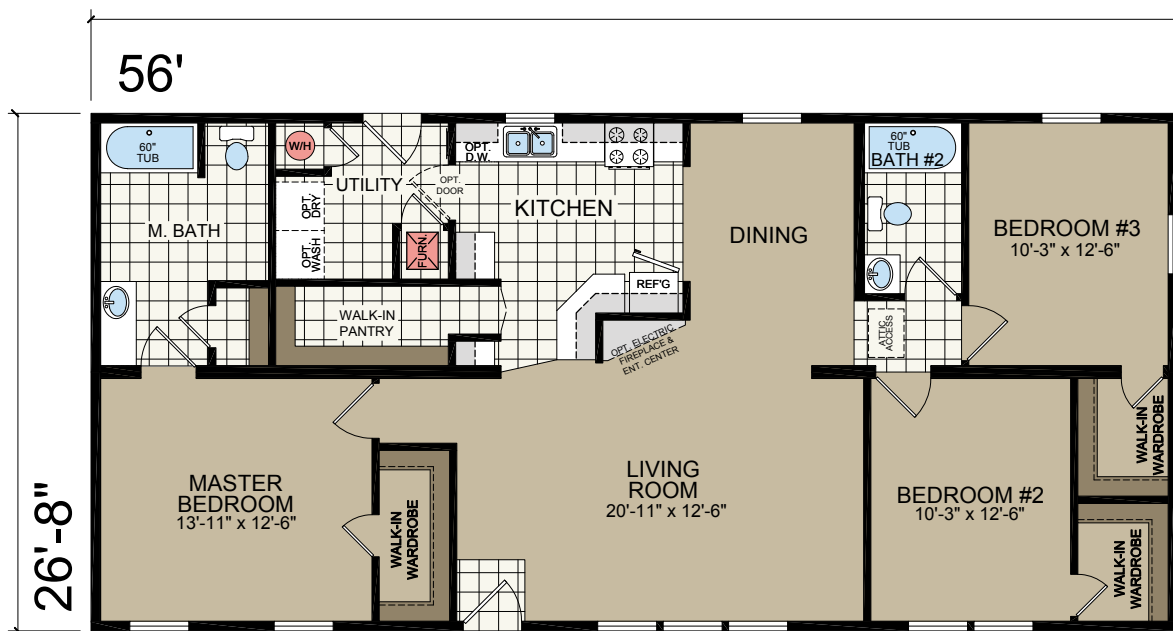
\*\* Insulated heat ducts are shipped loose and installed on-site by others

# 2860-205

28' x 56'  
3 bed-2 bath  
1493 sq. ft.



Shown with Site-built Porch



MASTER BATH OPTION

Model N/A in Ohio

\* Designates field work

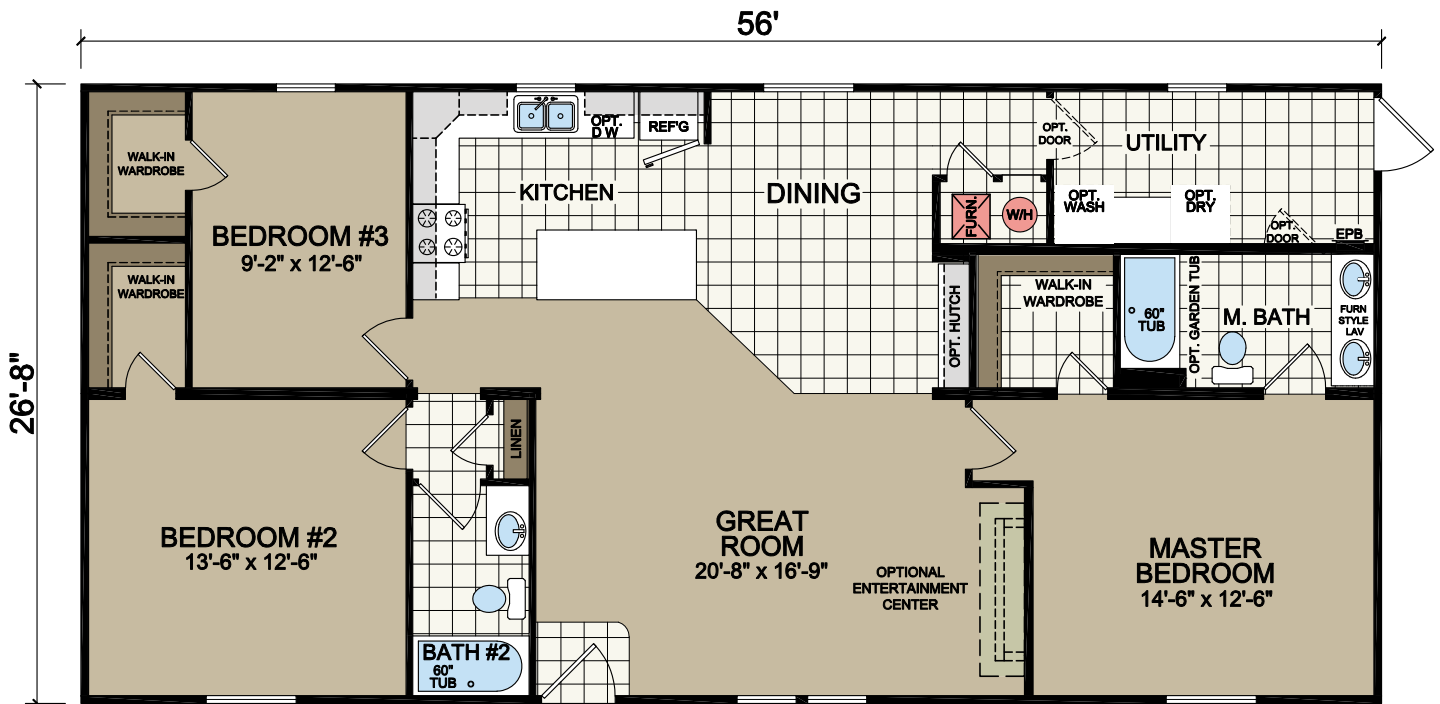
\*\* Insulated heat ducts are shipped loose and installed on-site by others

2860-223

28' x 56'  
3 bed-2 bath  
1493 sq. ft.



Shown with Optional Windows in Master Bedroom and Bedroom #2

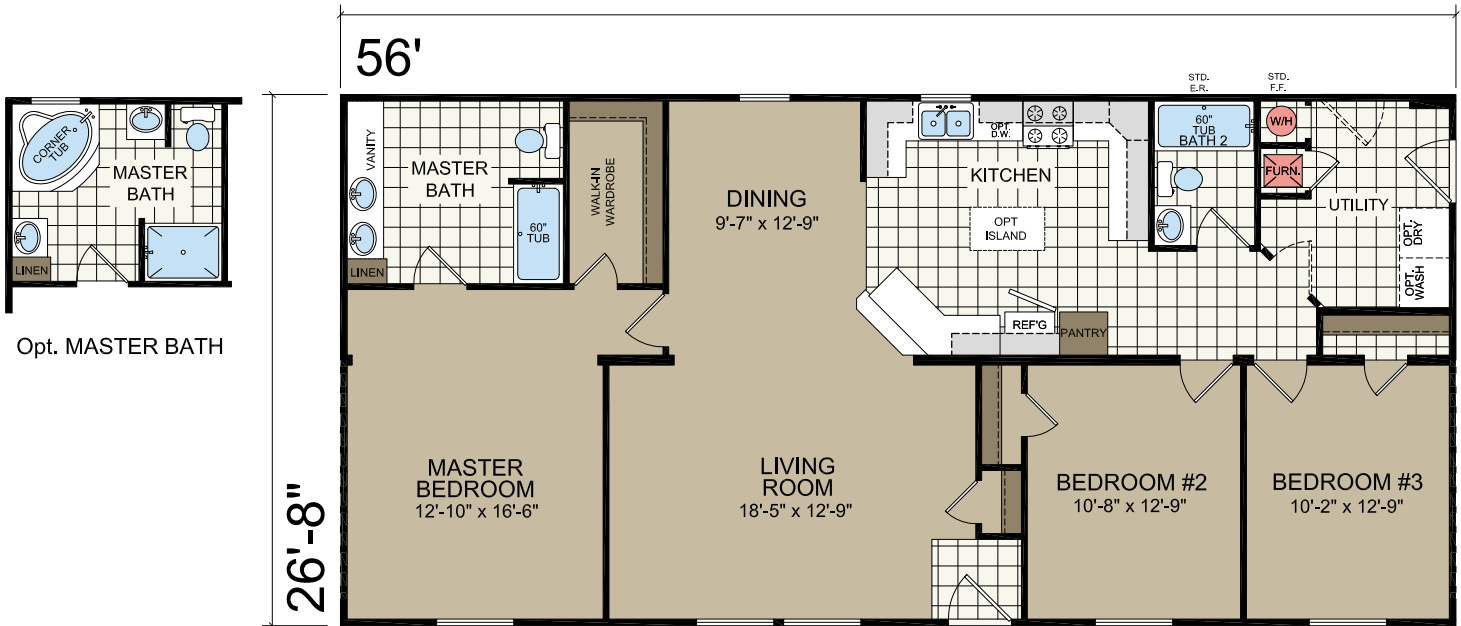


# 2860-231

28' x 56'  
3 bed-2 bath  
1493 sq. ft.



Shown with *Optional Exterior and Site-built Porch and Garage*



Model N/A in Ohio

\* Designates field work

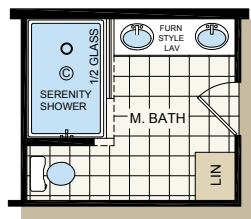
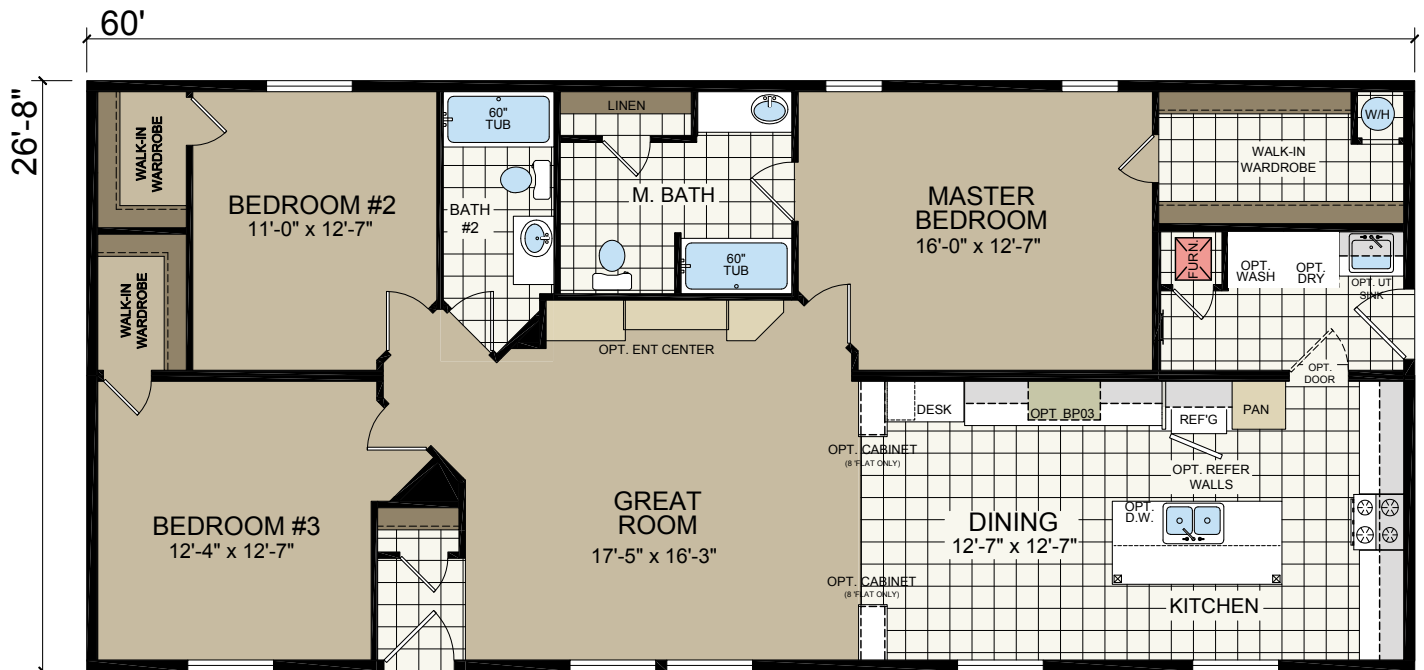
\*\* Insulated heat ducts are shipped loose and installed on-site by others

2864-217

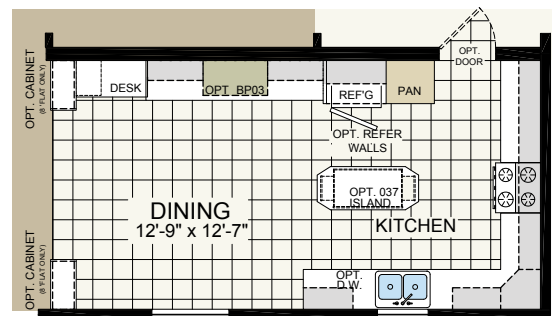
28' x 60'  
3 bed-2 bath  
1600 sq. ft.



Shown with Site-built Porch



OPT. SERENITY SHOWER



OPTIONAL KITCHEN #1

\* Designates field work

\*\* Insulated heat ducts are shipped loose and installed on-site by others

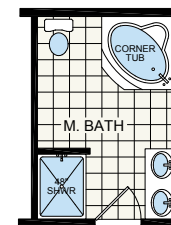
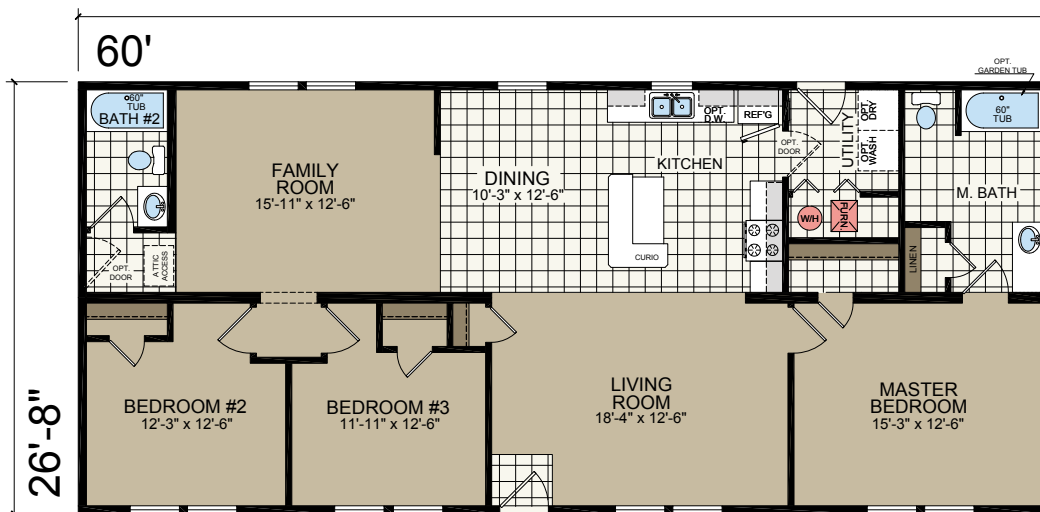


# 2864-203

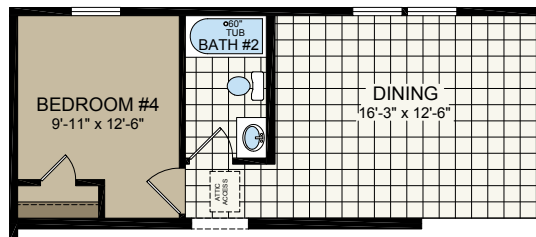
28' x 60'  
3 bed-2 bath  
1600 sq. ft.



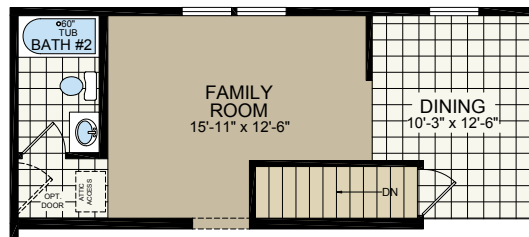
Shown with Site-built Porch



MASTER BATH OPTION



4TH BEDROOM OPTION



STAIRWELL OPTION  
N/A w/4th BEDROOM OPT.

\* Designates field work

\*\* Insulated heat ducts are shipped loose and installed on-site by others

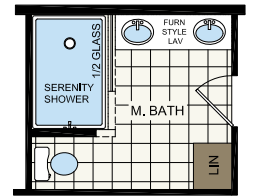
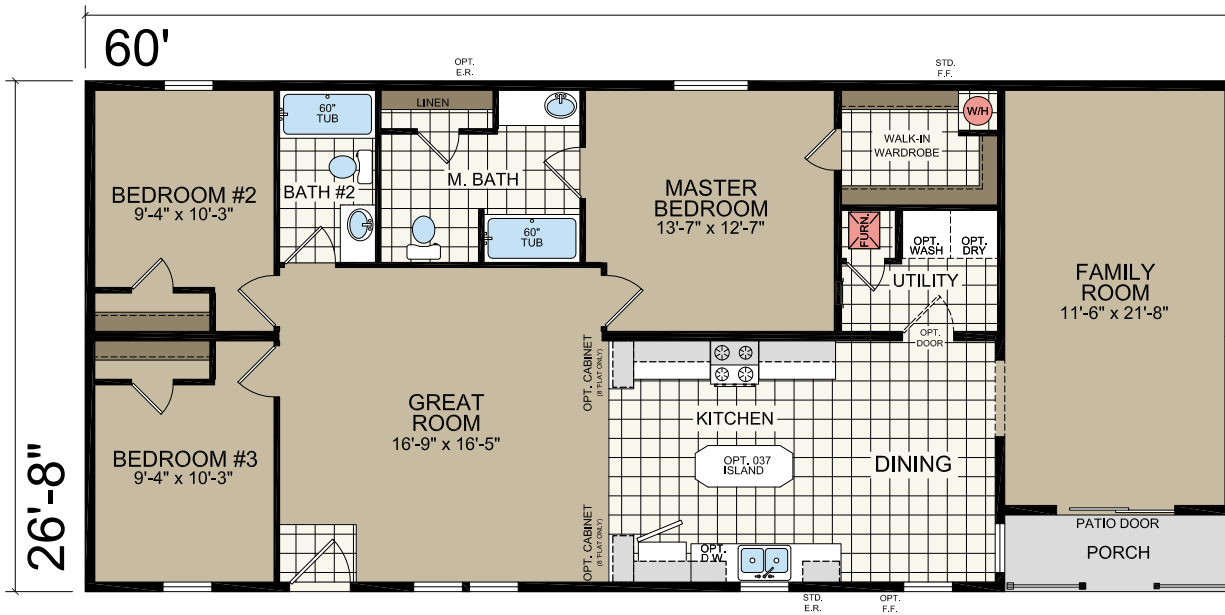


# 2864-219

28' x 60'  
3 bed-2 bath  
1600 sq. ft.



Shown with Site-built Porches



OPT. SERENITY SHOWER

\* Designates field work

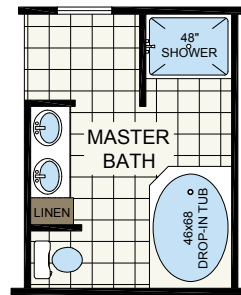
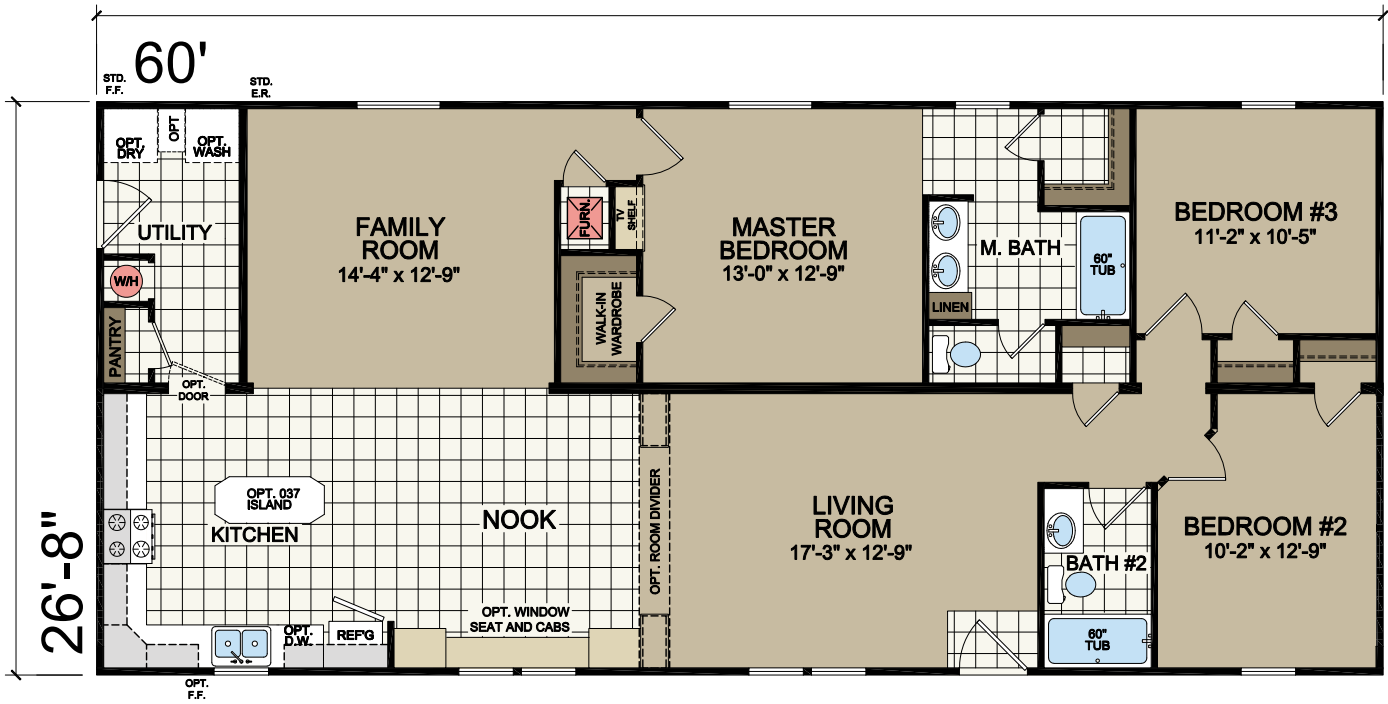
\*\* Insulated heat ducts are shipped loose and installed on-site by others

# 2864-221

28' x 60'  
3 bed-2 bath  
1600 sq. ft.



Shown with Site-built Porch and Garage



OPT. MASTER BATH

\* Designates field work

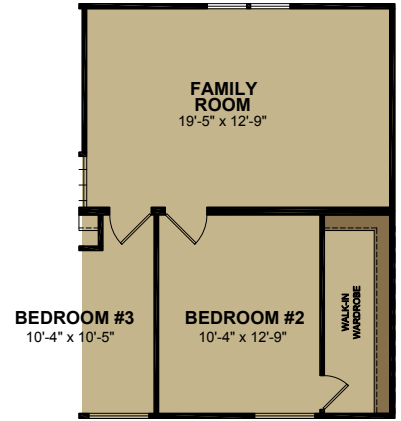
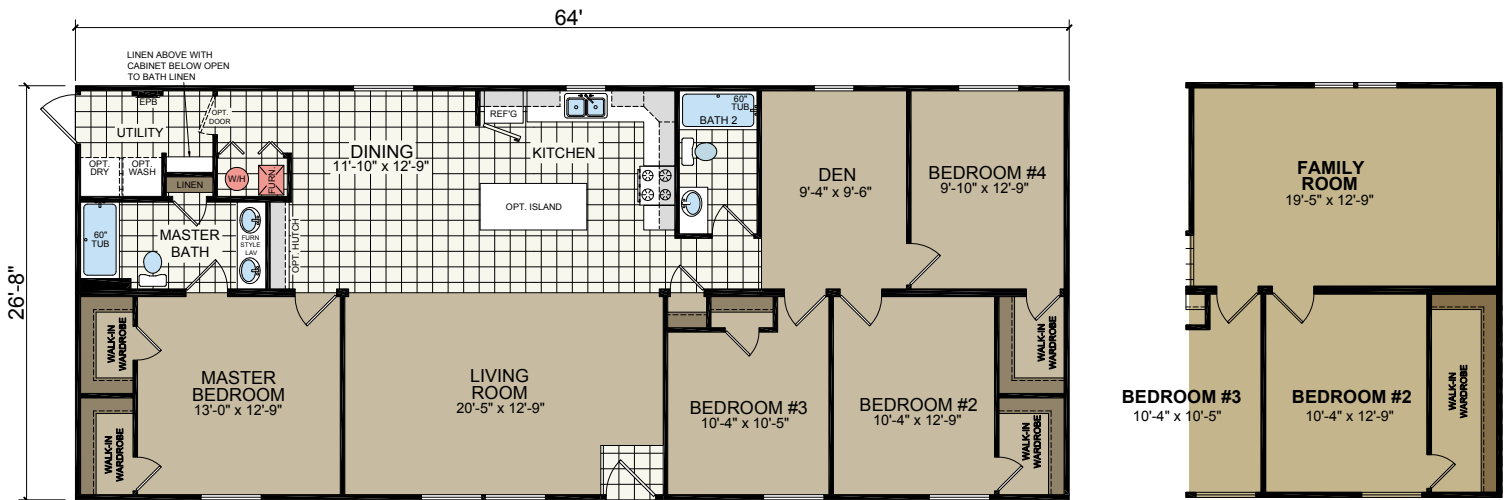
\*\* Insulated heat ducts are shipped loose and installed on-site by others

# 2868-203

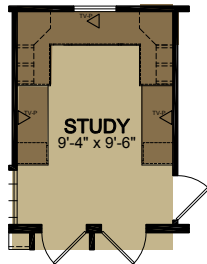
28' x 64'  
4 bed-2 bath  
1706 sq. ft.



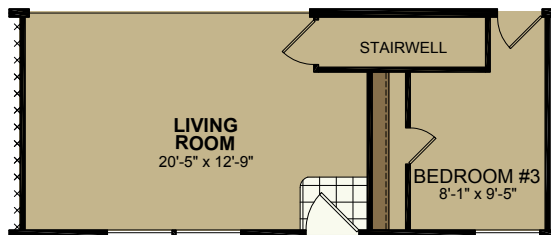
Shown with Site-built Porch and Optional Exterior Features



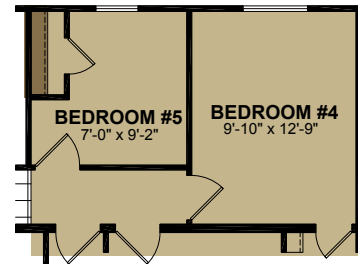
FAMILY ROOM OPTION



STUDY OPTION



STAIRWELL OPTION



5TH BEDROOM OPTION

\* Designates field work

\*\* Insulated heat ducts are shipped loose and installed on-site by others

2868-203  
INTERIOR



# 2880-201

28' x 76'  
4 bed-2 bath  
2027 sq. ft.



Shown with Site-built Porch



\* Designates field work

\*\* Insulated heat ducts are shipped loose and installed on-site by others

# MAKE YOURSELF AT HOME WITH REDMAN HOMES

## **Redman tradition, Redman value**

It's finding a home you can feel proud to call your own. It's design choices that perfectly match your need for space and comfort and frees you to express them in your own way. It's award-winning design and craftsmanship with impeccable attention to detail. It's a commitment to providing you with the style and features you'll enjoy for years to come. It's combining everything you would want in a home with surprising affordability.

It's all yours from Redman Homes.



# 2015 ADVANTAGE MOD SERIES

## MULTI-SECTION STANDARD FEATURES

### FRAMES/FLOORS

- \* 2 x 10 Floor Joist
- 5/8" 4'x8' OSB Floor Decking
  - Tongue and Groove
- Double 2 x 10 Rim Joist
- LVL Marriage Line Rim Joist
- Carpet w/Tack strip
- 5 Lb. Rebond Carpet Pad

### CEILING/ROOF

- \* Flat Ceilings w/ Stomped Textured Finish and Finished Joint
- 3/12 Roof Pitch STD 28' Wide
- 5/12 Roof Pitch Option is Available
- \* R-40 Cellulose Insulation
- 7/16" OSB Roof Sheathing
- 25 Year 3-Tab Shingle
- 28' Wides: 8" Eaves
- 30' Wides: 12" Eaves 30# Roof Load

### EXTERIOR DOORS WINDOWS

- Vinyl Single Hung, Low "E" w/ Grids
- Brush Nickel Lockset / Deadbolt
- Valances - Living Areas
- 2" Mini Blinds Throughout
- 36 x 80 White 6-Panel w/Storm - Front Door
- \* 36 x 80 White 6-Panel Fire Rated - Rear Door

### EXTERIOR

- \* 2x6 Wall Studs / 16" O.C.
- \* R-19 Insulation
- \* 7/16" OSB Sheathing
- \* 8' Sidewalls
- House Wrap
- Double 4" Vinyl Dutch Lap Siding
- 15" Raised Panel Shutters - Doorside
- White Steel Fascia
- Fully Vented Vinyl Soffit

- \* Included in Modular Package
- ORB = Oil Rubbed Bronze
- VBP = Varies by Print

### INTERIOR WALLS/DOORS

- \* 2x4 Interior Walls
- 1/2" Drywall Throughout (Forced Option)
- White 6-Panel Interior Doors
- ORB Round Knobs / Mortised Hinges
- 618 Flat Wrapped Door & Window Trim
- 618 Flat Wrapped Base Moulding
- Vinyl Wrapped Door and Window Jamb
- Wrapped Flat Door Stop
- 2'x4' 16" O.C. Marriage Wall
- Wire Closet Shelving
- Furnace Door
- Water Heater Door (Forced Option - VBP)

### ELECTRICAL

- 200 AMP Service w/ 30-40 Box
- 12-2 Copper Throughout
- Wire for Dryer
- Carbon/Smoke Detectors - All Bedrooms & Living Area
- GFI Receptacles - Kitchen & Baths
- \* (2) Exterior GFI Receptacles
- Exterior Light at Front Door
- Exterior Light at Rear Door
- (1) Phone Jack - Standard in Kitchen
- ORB Light Fixtures w/ Glass Globes

### HEATING & PLUMBING

- 30 Gallon Electric Water Heater
- Water Shut-Offs @ All Fixtures
- PEX Water Lines
- (1) Frost Free Exterior Faucet w/ Shut-Off Per Print
- Plumb for Washer - Per Plan
- Electric Furnace (015 Std)

\* Heat Ducts to be shipped loose and installed on site

\* Perimeter Drop in Registers

\* Toe Kick Baseboard Registers Kitchen/Baths

\* Cold Air Returns in Ceiling

### CABINETRY

- Hometown Ash Flat Panel
  - Wrapped Cabinet Doors
- 1/2" Cabinet End Panels
- Hidden Hinges
- Countertops-Hi Pressure Laminate
  - w/ Self Edge
- \*Ceramic Backsplash
- Formica® Edging
- Corner Cabinet at Kitchen (VBP)
- 30" Overhead Cabinets
- Cabinet Cove Trim
- Bank of Drawers - Kitchen (VBP)
- 1/2" Fixed Center Shelf in Overheads
- ORB Cabinet Knobs

### KITCHEN/BATH

- Stainless Steel Sink w/Sprayer
- 48" or 60" 1-Piece Fiberglass Shower or Tub/Shower (VBP)
- Pivot Shower Door for 60" Shower or 48" Shower (VBP)
- 1-Piece Fiberglass Tub/Shower -VBP
- China Commode Round
- White China Lavs
- Bath Vents - Eave Vent / Side Discharge
- ORB Lights in Baths

NOTE: Faucets are Nickel

### APPLIANCES

- 30" Std Clean Electric Range
- 18 CF Over/Under Refrigerator
- 30" Range Hood w/Charcoal Filter



308 Sheridan Drive | Topeka, IN 46571  
T 800-777-6637 | F 260-593-2401  
[www.redmanhomesofindiana.com](http://www.redmanhomesofindiana.com)

CHAMPION®

MANUFACTURED BEAUTIFULLY™